



DALE[®]
GARN

HOUSE of YARN

CINDY JUMPER

DG 458-18 | MYK PÅFUGL



Dale Garn - a part of **HOUSE of YARN**



This design is a redesign of a classic from the Gjestal archive.

BODY

Cast on 144 (156) 168 (180) 192 (204) sts with colour 1 and circular needle size 5 mm. Work rib in the round (K1, P1) for 8 cm.

Insert a marker round 1 st in each side (= marker-sts) with 71 (77) 83 (89) 95 (101) sts on both the front and back pieces. Change to needle size 6 mm and work pattern according to the diagram. Begin at the first marker-st.

When the piece measures 35 (36) 37 (38) 39 (40) cm, cast off the marker-sts on each side and finish the front and back pieces separately.

© House of Yarn AS

The copying and publication of materials and patterns, or their use for commercial purposes, is not allowed without prior agreement with House of Yarn AS.

Photo: House of Yarn

DG 458-18

CINDY JUMPER

DESIGN

Dale Garn

YARN

MYK PÅFUGL 73% mohair, 22% wool, 5% polyamide, 50 grams = approx. 90 metres

SIZES

S (M) L (XL) XXL (XXXL)

NOTE! See GARMENT MEASUREMENTS and find the right size
The garment has a loose shape. Please choose size according to the measurements table.

GARMENT MEASUREMENTS

Chest size approx. 103 (111) 120 (129) 137 (146) cm

Full length approx. 58 (60) 62 (64) 66 (68) cm

Sleeve-length approx. 45 cm or to desired length

YARN AMOUNTS

Colour 1: 4 (4) 4 (5) 5 (6) balls

Colour 2: 1 (2) 2 (2) 2 (2) balls

Colour 3: 3 (3) 3 (4) 4 (4) balls

Colour 4: 2 balls in all sizes

COLOURS

Colour 1: Light denim 7911

Colour 2: Pink 7931

Colour 3: White 0010

Colour 4: Light yellow 7901

SUGGESTED NEEDLE SIZE

Long and short circular needles and DPN sizes

5 mm and 6 mm

KNITTING TENSION

14 sts stocking st and pattern with needle size 6 mm = 10 cm

Check your knitting tension by working a swatch.

Count the number of sts per 10cm; if you have more sts than suggested change to a larger needle size. If you have less sts, change to a smaller needle size.

FIND THE RIGHT SIZE

1. Measure a garment that fits you.
2. Compare the measurements with the pattern.
3. Choose your size from the width of the body.
4. Length of body and sleeves; you can work them longer or shorter if you wish.

Pattern prepared by Ane Kydland Thomassen

ABBREVIATIONS

K = knit, P = purl, st. = stitch, r = row



BACK PIECE

= 71 (77) 83 (89) 95 (101) sts.

Continue back and forth with pattern according to the diagram. When the piece measures 56 (58) 60 (62) 64 (66) cm, cast off the middle 21 (23) 25 (27) 27 (29) sts for the neck. Work each shoulder separately and cast off for the neck every 2nd row: 1,1 st = 23 (25) 27 (29) 32 (34) shoulder-sts. Work until the piece measures 58 (60) 62 (64) 66 (68) cm. Cast off. Work the other shoulder in the same way but reversed.

FRONT PIECE

= 71 (77) 83 (89) 95 (101) sts.

Continue back and forth with pattern according to the diagram. When the piece measures 50 (52) 54 (56) 58 (60) cm, cast off the middle 13 (15) 17 (19) 19 (21) sts for the neck. Work each shoulder separately and cast off for the neck every 2nd row: 2,1,1,1,1 st = 23 (25) 27 (29) 32 (34) shoulder-sts. Work until the piece measures 58 (60) 62 (64) 66 (68) cm. Cast off. Work the other shoulder in the same way but reversed.

SLEEVES

Cast on 32 (34) 34 (36) 38 (40) with colour 1 and double pointed needles size 5 mm. Work rib in the round (K1, P1) for 8 cm. **At the same time**, on the last round increase 7 sts evenly spaced = 39 (41) 41 (43) 45 (47) sts. Insert a marker round the first and last st = marker-st. Change to needle size 6 mm and work pattern according to the diagram. Count

out from the middle of the sleeve where the diagram should begin. When the sleeve measures 10 cm, increase 1 st on each side of the marker-st. Repeat this increases every 2.5 (2.5) 2 (2) 2 (2) cm a total of 13 (13) 14 (15) 15 (16) times = 65 (67) 69 (73) 75 (79) sts.

The increased stitches are worked into the pattern. Work until the sleeve measures 45 cm or to desired length. Cast off. Work one more sleeve in the same way.

ASSEMBLY

Sew together the shoulder seams.

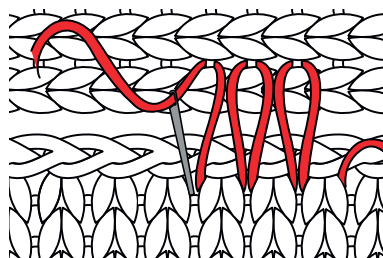
Sew in the sleeves with masking sts.

NECK

Knit up 7 sts per 5 cm with colour 1 using needle size 5 mm.

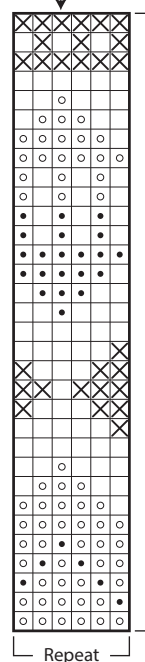
St-number must be divisible by 2. Work 7 cm rib in the round with K1, P1. Cast off with K and P. Fold the neck double to the inside and sew down with loose stitches.

SEWING TOGETHER CAST-OFF SLEEVES



DIAGRAM

Middle of sleeve



Repeat

- Colour 1
- Colour 2
- Colour 3
- Colour 4

Repeat

Do you need inspiration for your next knitting project? Check out the website houseofyarn.no