



DAGMAR JUMPER

DG 461-08D | MERINO 22



DG 461-08D

DAGMAR JUMPER

DESIGN

Dale Garn

YARN

MERINO 22, 100% extra fine merino wool,
50 grams = approx. 125 metres

Alternative yarn: LERKE, NATURAL LANOLIN WOOL,
ØKO BOMULL

SIZES

XS (S) M (L) XL (XXL)

NOTE! See GARMENT MEASUREMENTS and find the right size

GARMENT MEASUREMENTS

Chest size approx. 105 (112) 117 (121) 128 (135) cm

Full length approx. 56 (58) 60 (63) 65 (67) cm

Sleeve-length approx. 46 cm (same for all sizes)

YARN AMOUNTS

12 (14) 15 (17) 18 (20) balls

COLOUR

Light yellow 2038

SUGGESTED NEEDLE SIZE

3.5 mm and 4 mm long and short circular needles and DPNs

KNITTING TENSION

22 sts in pattern on 4 mm needles = 10 cm

Check your knitting tension by working a swatch.

Count the number of sts per 10 cm; if you have more sts than suggested change to a larger needle size. If you have fewer sts, change to a smaller needle size.

FIND THE RIGHT SIZE

1. Measure a garment that fits you.
2. Compare the measurements with the pattern.
3. Choose your size from the width of the body.
4. Length of body and sleeves; you can work them longer or shorter if you wish.

Pattern by Brit Frafjord Ørstavik

ABBREVIATIONS

K = knit, P = purl, st. = stitch, r = row,

DPNs = double pointed needles



The pattern is inspired by a Dale design from the 80s.

BODY

Cast on 228 (244) 256 (264) 280 (296) sts on 3.5 mm circular needles and work 9 cm rib in the round with K2, P2.

On the last round, increase 2 sts evenly spaced = 230 (246) 258 (266) 282 (298) sts.

Insert a marker in each side with 115 (123) 129 (133) 141 (149) sts on both the front and back pieces.

Change to 4 mm needles. Work pattern according to diagram *A, B, A and then diagram C* until the piece measures 31 (32) 33 (34) 35 (36) cm. Begin at the arrow for your chosen size at each marker.

Repeat from *-*.

NOTE! When there are not enough sts in diagram B to work in the 2nd st before the first st, K the stitches.

At the same time, when the piece measures 36 (37) 38 (40) 41 (42) cm, divide for armholes and finish the front and back pieces separately.

© House of Yarn AS

The copying and publication of materials and patterns, or their use for commercial purposes, is not allowed without prior agreement with House of Yarn AS.



BACK PIECE

= 115 (123) 129 (133) 141 (149) sts.

Continue working the pattern back and forth until the piece measures 52 (54) 56 (59) 61 (63) cm. **NOTE!** Make sure to begin on a row so that the cabling in diagram **B** is worked from the right side.

Work pattern according to diagram **A**. On row 7 in the diagram (= right side), cast off the middle 37 (37) 39 (39) 41 (41) sts for the neckline and finish each shoulder separately. Continue back and forth and cast off for the neckline at the beginning of each row 1, 1 st = 37 (41) 43 (45) 48 (52) shoulder sts. Finish diagram **A**. The piece measures approx. 56 (58) 60 (63) 65 (67) cm. Cast off. Work the other shoulder in the same way but in reverse.

FRONT PIECE

= 115 (123) 129 (133) 141 (149) sts.

Work back and forth in the same way as the back piece. When the piece measures 49 (51) 53 (56) 58 (60) cm, cast off the middle 19 (19) 21 (21) 23 (23) sts for the neckline and finish each shoulder separately.

Continue back, and forth and cast off for the neckline at the beginning of each row 3,2,2,1,1,1,1 st = 37 (41) 43 (45) 48 (52) shoulder sts. When the piece measures 52 (54) 56 (59) 61 (63) cm, work pattern according to diagram **A**.

The piece measures approx. 56 (58) 60 (63) 65 (67) cm. Cast off. Work the other shoulder in the same way but in reverse.

SLEEVES

Cast on 44 (44) 44 (48) 48 (48) sts with 3.5 mm DPNs. Work rib in the round (K2, P2) for 8 cm.

Insert a marker round the first and last sts = marker sts. Change to 4 mm needles and work pattern according to diagram **C**. **At the same time**, on round 1 increase 21 sts evenly spaced = 65 (65) 65 (69) 69 (69) sts. Count outwards from the middle of the sleeve to find where the diagram should begin.

When the sleeve measures 9 cm, increase 1 st on each side of the marker st. Repeat these increases every 3 (2.5) 2 (2) 2 (1.5) cm a total of 11 (13) 16 (16) 18 (20) times = 87 (91) 97 (101) 105 (109) sts.

When the sleeve measures approx. 35 cm, work pattern according to diagrams **A, B, A**. Count outwards from the middle of the sleeve to find where the diagram **B** should begin. The sleeve measures approx. 46 cm.

Cast off. Work one more sleeve in the same way.

ASSEMBLY

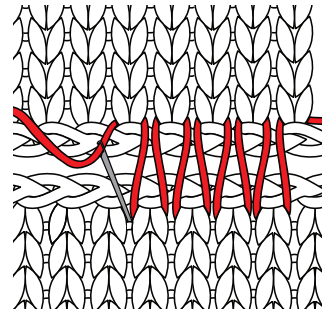
Sew the shoulder seams together and sew in the sleeves with grafting sts.

NECKLINE

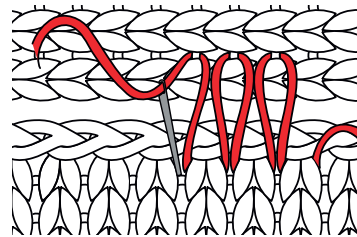
Knit up approx. 100-108 sts with 3.5 mm needles. Number of sts must be divisible by 4. Work 8 cm rib in the round with K2, P2. Cast off. Fold the neck double to the inside and sew down with loose stitches.



GRAFT TOGETHER WITH KITCHENER ST

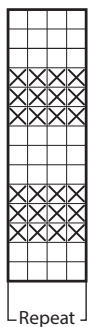


SEWING TOGETHER CAST-OFF SLEEVES

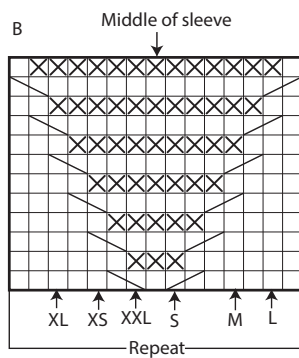


DIAGRAM

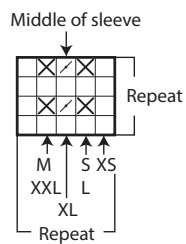
A



B



C



- K on right side, P on wrong side
- P on right side, K on wrong side
- K 2nd st in front of first st, k first st, slip st
- K 2nd st behind first st, work first st, slip st
- Slip 1 st, with working yarn on wrong side

Do you need inspiration for your next knitting project? Check out the website houseofyarn.no