



LEONORA DRESS

DG 361-12 | ØKO BOMULL



DG 361-12

LEONORA DRESS

DESIGN

Anne-Kirsti Espenes

YARN

ØKO COTTON 100% organic cotton,
50 grams = approx. 100 metres

Yarn alternatives: LERKE, MERINO 22

SIZES

XS (S) M (L) XL

GARMENT MEASUREMENTS

Chest size approx. 83 (90) 95 (103) 112 cm
Full length approx. 80 (82) 84 (86) 87 cm
Width at bottom approx. 99 (108) 115 (123) 132 cm

YARN AMOUNTS

11 (12) 14 (15) 16 balls

COLOUR

Light Jade Green 305

Note! We have updated the yarn in this pattern as the original yarn is no longer being produced. The colours can therefore differ slightly from those shown in the picture.

SUGGESTED NEEDLE SIZE

Long circular needles sizes 3 and 3.5 mm

KNITTING TENSION

5 sts diagram **A** with 3.5 mm needles = approx. 2.5 cm
22 sts diagram **B** and diagram **C** with 3.5 mm needles = 10 cm

Check your knitting tension by working a swatch.
Count the number of sts per 10 cm; if you have more sts than suggested change to a larger needle size. If you have fewer sts, change to a smaller needle size.

FIND THE RIGHT SIZE

1. Measure a garment that fits you.
2. Compare the measurements with the pattern.
3. Choose your size from the chest measurements.
4. Body can be worked longer or shorter as needed.

ABBREVIATIONS

K = knit, P = purl, st. = stitch, r = row,
DPN = double pointed needles



BODY

Cast on 216 (236) 252 (268) 288 sts with 3 mm circular needles. *K 1 round, P 1 round*, repeat from *-* a total of 3 times = 3 ridges of garter stitch. Change to 3.5 mm needles and work pattern as follows: (The round begins in pattern according to diagram **A** in the middle of one side). Pattern according to diagram **A**, pattern according to diagram **B**, pattern according to diagram **A**, pattern according to diagram **C**, pattern according to diagram **A**, pattern according to diagram **B**, pattern according to diagram **A**, pattern according to diagram **C**. Diagram **B** is worked as follows: Begin at the arrow for your selected size and follow instructions. Diagram **C** is worked as follows: Follow instructions and end at the arrow for your selected size. When the piece measures 10 (8) 5 (5) 5 cm, decrease 2 sts on each side as follows: K2 together or P2 together (according to which fits pattern **B** and pattern **C**) on each side of pattern **A** = 4 sts decreased. Repeat this decrease every 5 cm a total of 9 (10) 11 (11) 11 times = 180 (196) 208 (224) 244 sts. Work until the piece measures 59 (60) 61 (63) 63 cm. Cast off 9 (11) 13 (13) 15 sts on each side, i.e. pattern **A** (= 5 sts) + 2 (3) 4 (4) 5 sts on each side = 81 (87) 91 (99) 107 sts on front and back piece.

© House of Yarn AS

The copying and publication of materials and patterns, or their use for commercial purposes, is not allowed without prior agreement with House of Yarn AS.



FRONT PIECE

Continue the pattern back and forth and cast off for the armholes on each side every 2nd row 2,1,1,1,1 (2,1,1,1,1,1) 2,1,1,1,1,1 (2,1,1,1,1,1,1) 2,2,1,1,1,1,1 sts = 69 (73) 77 (83) 87 sts. Work until the armholes measure 11 (12) 12 (12) 13 cm. Place the middle 19 (21) 23 (25) 27 sts on a thread. Finish each side separately and cast off every 2nd row for the neckline 2,2,1,1,1,1,1 sts (the same in all sizes) = 16 (17) 18 (20) 21 sts. Work until the armhole measures 21 (22) 23 (23) 24 cm. Cast off. Work the other side in the same way but reversed.

BACK PIECE

Work pattern back and forth and cast off for the armholes in the same way as on the front piece. Continue working until the back piece is 4 cm shorter than front piece. Place the middle 29 (31) 33 (35) 37 sts on a thread. Finish each side separately and cast off every 2nd row for the neck 2,1,1 sts. Work until the back piece is the same length as the front piece. Cast off. Work the other side in the same way but reversed.

ASSEMBLY

Sew together the shoulder seams.

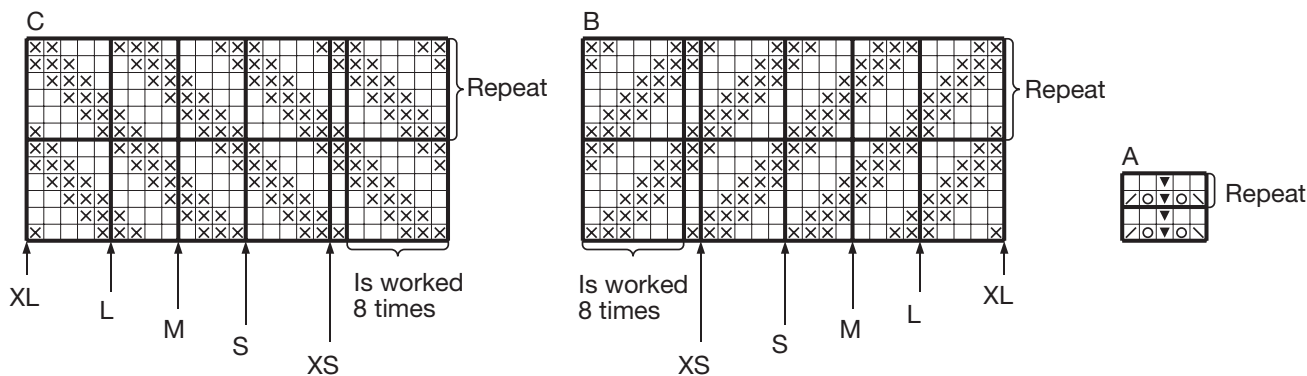
EDGE AROUND NECK

Begin on one shoulder with 3 mm circular needles. Place the working yarn under the edge and knit up 10 – 11 sts pr 5 cm all the way round (include the sts from the threads front and back). K 4 rows back and forth (row 1 from wrong side). Cast off with K from wrong side. Sew the ends of the edge together on the shoulder.

EDGE AROUND ARMHOLES

Begin at the bottom of each armhole and work the same edge as around the neck.

DIAGRAM



- K on right side, P on wrong side
- P on right side, K on wrong side
- Slip 1 st, K1, pass slipped st over knitted st
- K2 together
- K1 twisted on right side, P1 twisted on wrong side
- 1 yarn over

Do you need inspiration for your next knitting project? Check out the website houseofyarn.no