



DALE[®]
GARN

HOUSE of YARN

RALLAR- JUMPER

DG 289-12E | ALPAKKA FORTE



Dale Garn - a part of HOUSE of YARN

DG 289-12E

RALLAR-JUMPER

DESIGN

Dale Garn

YARN

ALPAKKA FORTE 80% alpaca, 20% nylon,
50 grams = approx. 133 metres

Yarn alternative: ALPAKKA

SIZES

XS (S) M (L) XL (XXL)

GARMENT MEASUREMENTS

Chest 83 (90) 99 (107) 118 (130) cm

Length 58 (60) 62 (65) 67 (68) cm

Sleeve length 49 cm in all sizes, or your desired length

YARN AMOUNTS

Colour 1: 7 (7) 8 (9) 9 (10) balls

Colour 2: 2 (2) 3 (3) 3 (3) balls

Colour 3: 1 ball in all sizes

COLOURS

Colour 1: Anthracite 710

Colour 2: Off white 711

Colour 3: Light grey 716

SUGGESTED NEEDLE SIZE

Long and short circular needles and DPNs 3 mm and 3.5 mm

KNITTING TENSION

25 sts stocking st and pattern with 3.5 mm needles = 10 cm

Check your knitting tension by working a swatch.

Count the number of sts per 10 cm; if you have more sts than suggested change to a larger needle size. If you have fewer sts, change to a smaller needle size.

FIND THE RIGHT SIZE

1. Measure a garment that fits you.
2. Compare the measurements with the pattern.
3. Choose your size from the chest measurements.
4. Body and sleeves can be worked longer or shorter as needed.

ABBREVIATIONS

K = knit, P = purl, st. = stitch, r = row,

DPNs = double pointed needles

© House of Yarn AS

The copying and publication of materials and patterns, or their use for commercial purposes, is not allowed without prior agreement with House of Yarn AS.





BODY

Cast on 208 (224) 248 (268) 296 (324) sts with colour 1 on 3 mm circular needles. Work rib in the round (K1, P1) for 10 cm. Change to 3.5 mm needles and work stocking st. until the piece measures 37 (39) 40 (42) 44 (44) cm. On the last round, cast off for the armholes as follows: Cast off the last 8 sts on the round, then the next 8 sts, work 88 (96) 108 (118) 132 (146) sts, cast off 16 sts and work 88 (96) 108 (118) 132 (146) sts. Lay the piece to one side and work the sleeves.

SLEEVES

Cast on 58 (58) 58 (60) 62 (62) stitches with colour 1 on 6 mm DPNs. Work rib in the round (K1, P1) for 6 cm. Insert a marker around the first and last stitch mid-under sleeve. Change to 3.5 mm needles and continue with stocking st. **At the same time**, increase 1 st on each side of the marker. Repeat these increases every 3 (2.5) 2 (2) 1.5 (1.5) cm, until you have a total of 84 (90) 94 (100) 104 (108) sts. Work until the sleeve measures 49 cm or to your desired length. On the last round, cast off the last and first 8 sts on the round and work to the end of the round = 68 (74) 78 (84) 88 (92) sts. Lay the sleeve to one side and work the other sleeve.

YOKE

Place one sleeve, the front piece, the second sleeve and the back piece on 3.5 mm circular needle = 312 (340) 372 (404) 440 (476) sts. The round begins between the back piece and left sleeve. Work 1 (1) 3 (7) 7 (9) rounds with colour 1, **at the same time**: On round 1, decrease 18 (28) 30 (32) 38 (44) sts evenly spaced = 294 (312) 342 (372) 402 (432) sts. Work pattern according to diagram **A** = 245 (260) 285 (310) 335 (360) sts. Work pattern according to diagram **B**, **at the same time** on round 1 decrease 5 (8) 9 (10) 23 (24) sts evenly spaced = 240 (252) 276 (300) 312 (336) sts. Work pattern according to diagram **C** = 220 (231) 253 (275) 286 (308) sts. Work pattern according to diagram **D**. At the same time, on round 1 decrease 4 (3) 13 (11) 10 (20) sts evenly spaced = 216 (228) 240 (264) 276 (288) sts. When diagram **D** is finished, you should have 180 (190) 200 (220) 230 (240) sts. Work pattern according to diagram **B**. Work pattern according to diagram **E**. On the last round, K the first and second sts together using colour 1 = 108 (114) 120 (132) 138 (144) sts. Change to colour 1 and work 1 round of stocking st, **at the same time** decrease 0 (2) 4 (16) 18 (24) sts evenly spaced = 108 (112) 116 (116) 120 (120) sts. Leave the sts on the needle.

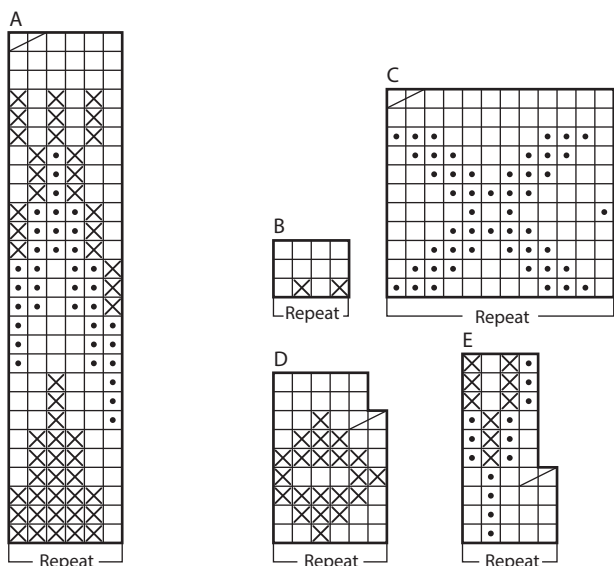
ASSEMBLY

Sew together under the sleeves.

NECKLINE

Change to 3 mm short circular needle and yarn colour 2. Work rib in the round with K1, P1 for 8 cm. Change to 3.5 mm needles and continue working until the neckline measures 18 cm. Cast off with K and P.

DIAGRAM



- Colour 2
- Colour 1
- Colour 3
- K2 together

Do you need inspiration for your next knitting project? Check out the website houseofyarn.no