



DALE[®]
GARN

HOUSE of YARN

AIDA JUMPER

DG 371-08 | ALPAKKA FORTE



Dale Garn - a part of HOUSE of YARN



DG 371-08

AIDA JUMPER

DESIGN

Brit Frafjord Ørstavik

YARN

ALPAKKA FORTE 80 % alpaca, 20 % nylon,
50 grams = approx. 133 metres

SIZES

S (M) L (XL) XXL

GARMENT MEASUREMENTS

Chest measurements approx. 89 (97) 105 (116) 127 cm
Full length approx. 54 (58) 61 (64) 65 cm
Sleeve length approx. 52 (51) 50 (49) 48 cm

YARN AMOUNTS

9 (10) 11 (12) 13 balls

COLOUR

Light mottled sea green 713

SUGGESTED NEEDLE SIZES

3 mm and 3.5 mm long circular needle and DPNs
3.5 mm short circular needle

KNITTING TENSION

25 sts with stocking st and needle size 3.5 mm = 10 cm

Check your knitting tension by working a swatch.

Count the number of sts per 10 cm; if you have more sts than suggested, change to a larger needle size. If you have fewer sts, change to a smaller needle size.

FIND THE RIGHT SIZE

1. Measure a garment that fits you.
2. Compare the measurements with the pattern.
3. Choose your size from the chest measurements.
4. Body and sleeves can be worked longer or shorter as needed.

ABBREVIATIONS

K = knit, P = purl, st. = stitch, r = row, DPN = double pointed needles, m1r = make one right, m1l = make one left

BODY

Cast on 220 (240) 260 (288) 316 sts with circular needle size 3 mm and work rib in the round for 4 cm (K1 twisted, P1). Insert a marker in each side = 110 (120) 130 (144) 158 sts on both the front and back pieces.

Change to 3.5 mm needles. Continue as follows:

*P6, work pattern according to diagram, 74 (84) 94 (108) 122 sts in stocking st, pattern according to diagram, P6 *, repeat from*-* = 236 (256) 276 (304) 332 sts. When the piece measures 34 (36) 38 (40) 40 cm, cast off 14 sts (= 7 sts on each side of markers) for the armholes.

Lay the piece to one side and work the sleeves.

SLEEVES

Cast on 50 (52) 56 (56) 58 sts with DPNs size 3 mm and work rib in the round for 4 cm (K1 twisted, P1).

Change to 3.5 mm needles. Insert a marker mid-under sleeve and work as follows 19 (20) 22 (22) 23 sts in stocking st, pattern according to diagram, 19 (20) 22 (22) 23 sts in stocking st = 54 (56) 60 (60) 62 sts. When the sleeve measures 5 cm, increase 1 st on each side of marker. Repeat this increase every 2 (2) 2 (2) 1.5 cm until you have 92 (96) 100 (104) 108 sts left. When the sleeve measures approx. 52 (51) 50 (49) 48 cm, cast off 14 sts (= 7 sts on each side of marker).

Work one more sleeve in the same way

© House of Yarn AS

The copying and publication of materials and patterns, or their use for commercial purposes, is not allowed without prior agreement with House of Yarn AS.



YOKE

Place back piece, right sleeve, front piece and left sleeve on circular needle size 3.5 mm = 364 (392) 420 (456) 492 sts. Insert a marker in each transition. Continue in the round with stocking st and pattern.

Decrease for raglan on each side of front and back pieces as follows:

K2 together after the diagram and slip 1 st, K1 and pass slipped st over before the diagram.

Increase every round 2 (5) 8 (11) 15 times, every 2nd round 2 times and every 4th round 2 times.

Continue without further increases until you have decreased a total of 19 (21) 21 (23) 23 times on sleeves.

Continue to decrease every 2nd round 3 times, every 4th round 4 times, every 2nd round 7 times and every 4th round 3 times (same in all sizes).

At the same time, decrease for raglan on each side of the sleeves as follows:

K2 together after the marker and slip 1 st, K1 and pass the slipped st over before the marker.

Every round 6 (7) 7 (8) 8 times, every 2nd round 3 times, every 4th round 3 times, every 2nd round 3 times, every round 6 (7) 7 (8) 8 times, every 4th round 6 times, every 2nd round 4 times = 148 (156) 172 (188) 208 sts.

Work 1 round and decrease 0 (8) 24 (36) 52 sts evenly spaced over the stocking sts and 2 sts over each cable diagram (= 12 sts) = 136 (136) 136 (140) 144 sts.

ASSEMBLY

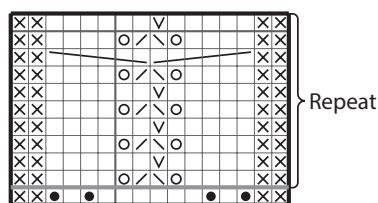
Sew together under the sleeves.

NECKLINE

= 136 (136) 136 (140) 144 sts.

Change to circular needle size 3.5 mm and work rib in the round for 5 cm (K1 twisted, P1). Cast off with K and P. Fold the neck to the inside and sew down with loose stitches.

DIAGRAM



- R
- V r
- Increase 1 m
- K2 together
- Slip 1 st, K1, pass slipped st over
- Work twisted r

- Place 2 sts on cable needle in front of piece, K4, work sts from cable needle r
- Place 4 st on cable needle behind the piece, K2, work sts from cable needle r

Do you need inspiration for your next knitting project? Check out the website houseofyarn.no