



DALE[®]
GARN

HOUSE of YARN

ANITRA SHORT JUMPER

DG 394-14 | NATURAL LANOLIN WOOL



DG 394-14

ANITRA SHORT JUMPER

DESIGN

Anne-Kirsti Espenes

YARN

NATURAL LANOLIN WOOL

100 % pure new wool, 50 gram = approx. 100 metres

SIZES

XS (S) M (L) XL (XXL)

NOTE! See GARMENT MEASUREMENTS to find the right size

GARMENT MEASUREMENTS

Chest size approx. 93 (98) 104 (109) 115 (125) cm

Full length approx. 67 (68) 72 (73) 77 (78) cm

Sleeve-length approx. 48 cm (in all sizes)

YARN AMOUNTS

Colour 1: 6 (7) 7 (8) 9 (9) balls

Colour 2: 5 (5) 6 (6) 7 (7) balls

COLOURS

Colour 1: Off white 1401

Colour 2: Olive green 1436

NOTE! We have updated the yarn in this pattern as the original yarn is no longer produced. The colours can therefore differ slightly from those shown in the picture.

SUGGESTED NEEDLE SIZES

3.5 and 4 mm long and short circular needles and DPNs

KNITTING TENSION

22 sts with stocking st and needle size 4 mm = 10 cm

26 rounds stocking st with needle size 4 mm = 10 cm

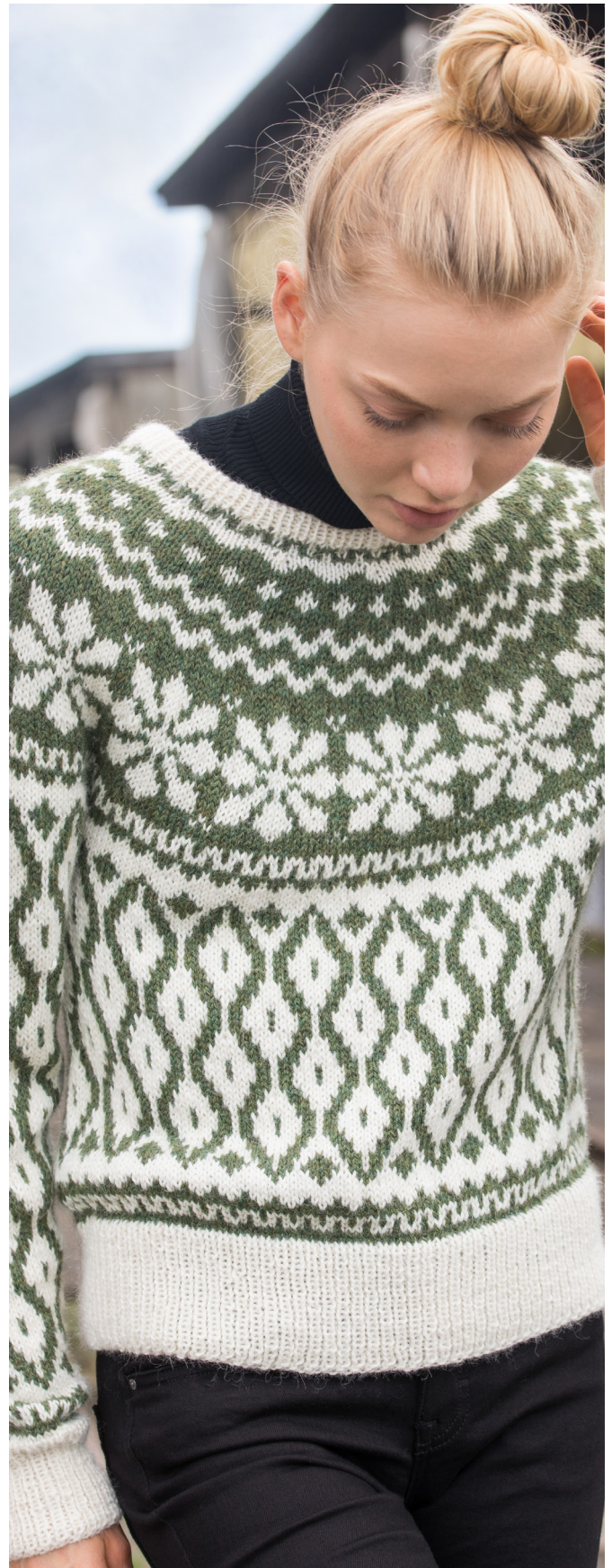
Check your knitting tension by working a swatch.
Count the number of sts per 10 cm; if you have more sts than suggested, change to a larger needle size. If you have fewer sts, change to a smaller needle size.

FIND THE RIGHT SIZE

1. Measure a garment that fits you.
2. Compare the measurements with the pattern.
3. Choose your size from the chest measurements.
4. Body and sleeves can be worked longer or shorter as needed.

ABBREVIATIONS

K = knit, P = purl, st. = stitch, r = row, DPN = double pointed needles, m1r = make one right, m1l = make one left



© House of Yarn AS

The copying and publication of materials and patterns, or their use for commercial purposes, is not allowed without prior agreement with House of Yarn AS.



BODY

Cast on 204 (216) 228 (240) 252 (276) sts with colour 1 and 3.5 mm circular needles. Work rib in the round (K1, P1) for 8 cm. Change to 4 mm circular needle. Work pattern according to diagram **A (A) B (B) B (B)**. On the last round, cast off for the armholes as follows: Cast off 6 (6) 6 (6) 6 (7) sts, work 91 (97) 103 (109) 115 (125) sts, cast off 11 (11) 11 (11) 11 (13) sts, work 91 (97) 103 (109) 115 (125) sts, cast off 5 (5) 5 (5) 5 (6) sts. Lay the piece to one side and work the sleeves.

SLEEVES

Cast on 46 (48) 50 (52) 54 (56) sts with colour 1 and DPNs size 3.5 mm. Work rib in the round (K1, P1) for 8 cm. Change to DPNs size 4 mm. K 1 round and increase 4 sts evenly spaced = 50 (52) 54 (56) 58 (60) sts. Insert a marker round the first st on the round = marker st, which is not worked into the pattern. Work pattern according to diagram **C**. Count out from middle of sleeve where diagram should begin. When the sleeve measures 10 cm, increase 1 st on each side of marker-st. Repeat the increase every 2.5 (2) 2 (2) 1.5 (1.5) cm, until you have a total of 78 (82) 86 (90) 94 (98) sts. Cast off 11 (11) 11 (11) 11 (13) sts mid-under sleeve (= marker-st + 5 (5) 5 (5) 5 (6) sts on each side) = 67 (71) 75 (79) 83 (85) sts. Work one more sleeve in the same way.

YOKE

Place left sleeve, front piece, right sleeve and back piece on circular needle size 4 mm = 316 (336) 356 (376) 396 (420) sts. Work pattern according to diagram **D**. Insert a marker mid-front and count out to the side to find out where in the diagram the «star border» should begin. When the diagram is finished there are 120 (126) 128 (136) 132 (136) sts left. Continue with colour 1. Work 2 (4) 2 (4) 2 (4) rounds of stocking st and decrease 12 (14) 14 (18) 12 (14) sts evenly spaced on the last round = 108 (112) 114 (118) 120 (122) sts.

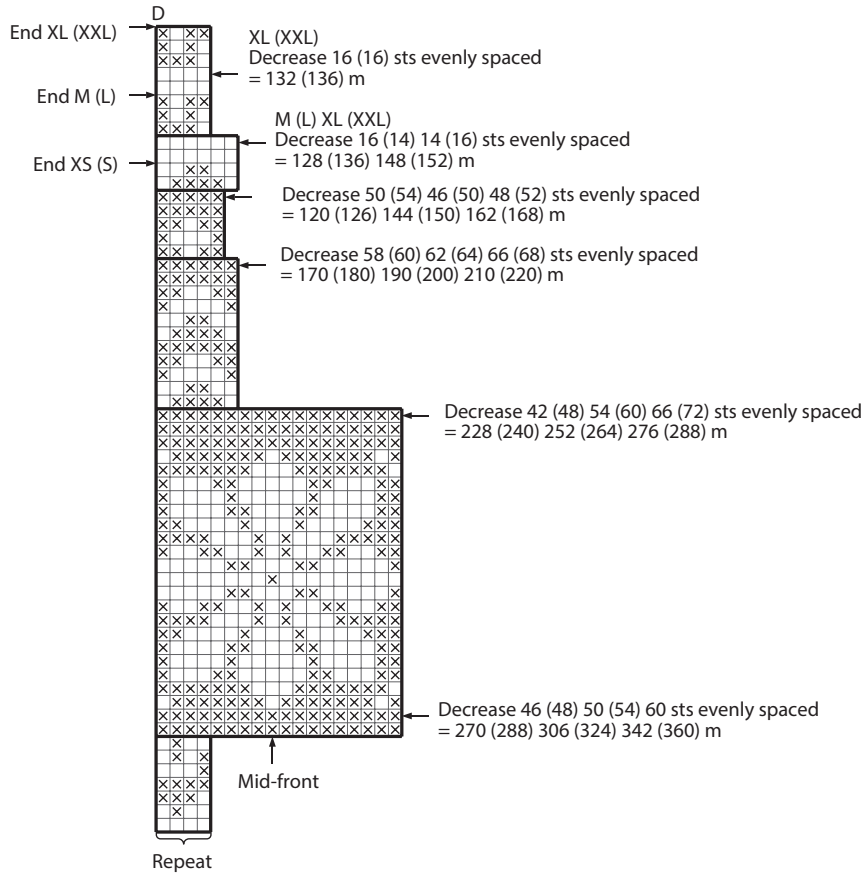
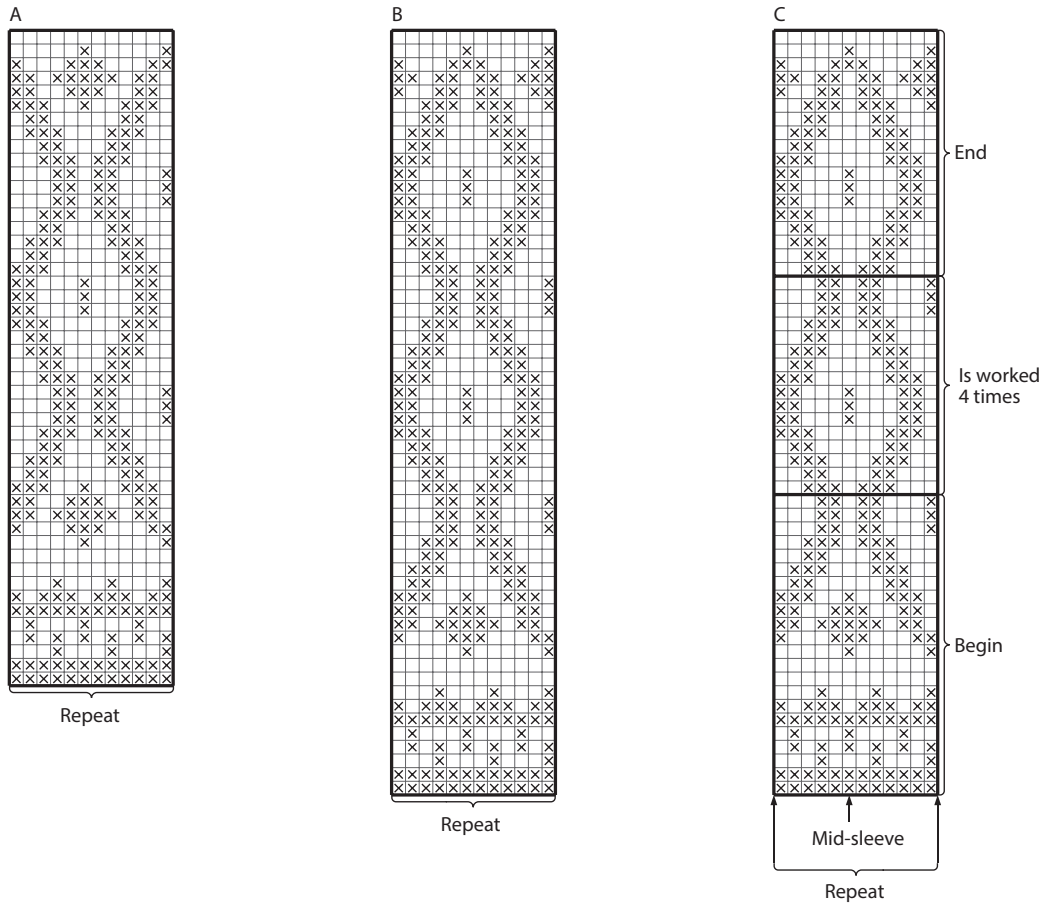
NECKLINE

Change to 3.5 mm circular needle. Work rib in the round (K1, P1) for 4 cm. Cast off with K and P. Fold the neck double to the inside and sew down.

ASSEMBLY

Sew together under the sleeves.

DIAGRAM



Do you need inspiration for your next knitting project? Check out the website houseofyarn.no