



DALE CORTINA JUMPER

DG 370-15B | NATURAL LANOLIN WOOL



DG 370-15B

DALE CORTINA JUMPER

CORTINA DESIGN

Designed by Bitten Eriksen in 1956

REDESIGN

Anne-Kirsti Espenes

YARN

NATURAL LANOLIN WOOL 100 % pure new wool,
50 grams = approx. 100 metres

SIZES

S (M) L (XL) XXL

GARMENT MEASUREMENTS

Chest measurements approx. 91 (98) 105 (115) 124 cm

Full length approx. 56 (58) 59 (59) 60 cm

Sleeve length approx. 47 (48) 49 (49) 50 cm

YARN AMOUNTS

Colour 1: 10 (10) 11 (12) 13 balls

Colour 2: 2 (2) 3 (3) 3 balls

COLOURS

Colour 1: Mottled anthracite 1431

Colour 2: White 1438

SUGGESTED NEEDLE SIZES

3.5 and 4 mm long and short circular needles and DPNs

KNITTING TENSION

22 sts with stocking st and needle size 4 mm = 10 cm

Check your knitting tension by working a swatch.

Count the number of sts per 10 cm; if you have more sts than suggested, change to a larger needle size. If you have fewer sts, change to a smaller needle size.

FIND THE RIGHT SIZE

1. Measure a garment that fits you.
2. Compare the measurements with the pattern.
3. Choose your size from the chest measurements.
4. Body and sleeves can be worked longer or shorter as needed.

ABBREVIATIONS

K = knit, P = purl, st. = stitch, r = row, DPN = double pointed needles, m1r = make one right, m1l = make one left

© House of Yarn AS

The copying and publication of materials and patterns, or their use for commercial purposes, is not allowed without prior agreement with House of Yarn AS.



BODY

Cast on 200 (216) 232 (252) 272 sts with colour 1 and circular needle size 3.5 mm. Work rib in the round (K1, P1) for 5 cm.

Change to circular needle size 4 mm and work stocking stitch until piece measures 36 (37) 37 (38) 38 cm. Work pattern according to diagram **A** as follows: *Begin at marker for chosen size and work as shown in diagram to the second marker* = front piece. Repeat from *-* = back piece.

Note! On the last round in diagram cast off for the armholes as follows: Cast off 4 sts, work 92 (100) 108 (118) 128 sts, cast off 8 sts, work 92 (100) 108 (118) 128 sts, cast off 4 sts. Lay the piece to one side and work the sleeves.

SLEEVES

Cast on 48 (50) 52 (52) 54 sts with colour 1 and DPNs size 3.5 mm. Work rib in the round (K1, P1) for 5 cm.

Change to DPNs size 4 mm, increase 2 stitches mid-under sleeve and work stocking st. Repeat the increase every 3 (2.5) 2.5 (2) 2 cm, (13) 14 (16) (19) 20 times = 76 (80) 86 (92) 96 sts. When the sleeve measures 46 (47) 48 (48) 49 cm, work pattern according to diagram **B**. Count out from middle of sleeve where diagram should begin. On the last round in the diagram cast off 8 sts mid-under sleeve = 68 (72) 78 (84) 88 sts. Work one more sleeve in the same way.

YOKE

Place one sleeve, the front piece, the second sleeve and the back piece on circular needle size 4 mm = 320 (344) 372 (404) 432 sts. Work pattern according to diagram **C** and decrease evenly as shown in diagram = 286 (312) 338 (364) 390 sts. Cut the strand. Insert a marker in middle of front piece. Count 78 (78) 104 (104) 104 sts back from the middle. The round begins here. This is done to get a «cross» in the pattern mid-front. Work pattern according to diagram **D**. Continue with pattern **E** and decrease evenly as shown in diagram = 144 (160) 168 (184) 192 sts. Continue with stocking st and colour 1. On round 2 decrease as follows: *K2 together, K16 (18) 19 (21) 22*, repeat from *-* to end of round = 136 (152) 160 (176) 184 sts. Work 1 round without decreasing. On the next round decrease again: *K2 together, K15 (17) 18 (20) 21*, repeat from *-* to end of round = 128 (144) 152 (168) 176 sts. Work 1 round without decreasing. On the next round decrease as before with 14 (16) 17 (19)

20 sts between each decrease = 120 (136) 144 (160) 168 sts. Continue to decrease like this every 2nd round until there are 14 (14) 14 (15) 15 sts between the decreases = 120 (120) 120 (128) 128 sts. Work 1 round and decrease 4 (4) 0 (4) 4 sts evenly spaced = 116 (116) 120 (124) 124 sts. Leave the stitches on the needle.

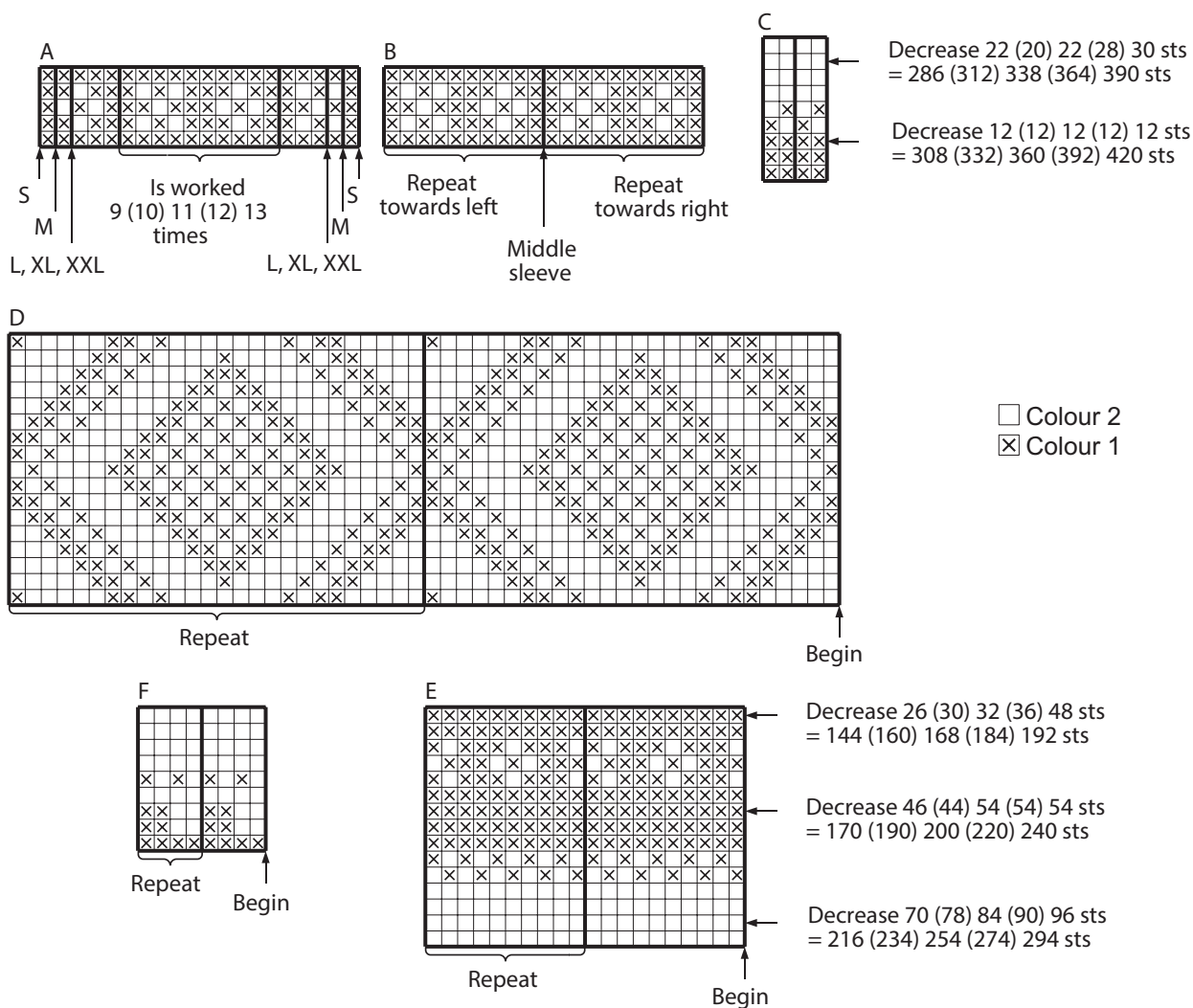
NECKLINE

Work pattern according to diagram **F**. Change to needle size 3.5 mm and continue with colour 2. Purl 1 round = folding-edge, then 3 cm of stocking stitch for lining. Cast off a little loosely.

ASSEMBLY

Fold the neck double to the inside and sew down with loose stitches. Use colour 1 to sew with so the sts do not show on the right side. Sew together under the sleeves.

DIAGRAM



Do you need inspiration for your next knitting project? Check out the website houseofyarn.no