



DALE<sup>®</sup>  
GARN

HOUSE of YARN

# INDIA CARDIGAN

DG 431-02 | MYK PÅFUGL



Dale Garn - a part of HOUSE of YARN

DG 431-02

## INDIA CARDIGAN

### DESIGN

Mari Kalberg Skjæveland

### YARN

MYK PÅFUGL 73 % mohair, 22 % wool, 5 % polyamide,  
50 grams = ca 90 metres

### SIZES

XXS (XS) S (M) L (XL) XXL (XXXL)

**NOTE!** See [GARMENT MEASUREMENTS](#) to find the right size

### GARMENT MEASUREMENTS

Chest measurement approx. 84 (88) 97 (104) 113 (122) 135  
(139) cm

Full length approx. 51 (53) 54 (56) 58 (60) 62 (64) cm

Sleeve-length approx. 48 cm or to desired length

### YARN AMOUNTS

7 (7) 8 (8) 9 (10) 11 (12) balls

### COLOURS

Jade green 7936

### SUGGESTED NEEDLE SIZES

5.5 mm and 7 mm long circular needles and DPNs

### ACCESSORIES

4-5 buttons

### KNITTING TENSION

15 sts with stocking st and needle size 5.5 mm = 10 cm

9 sts with English rib and needle size 7 mm = 10 cm

24 sts with double knit and needle size 5.5 mm = 10 cm

**Check your knitting tension by working a swatch.**

**Count the number of sts per 10 cm; if you have more sts than suggested, change to a larger needle size. If you have fewer sts, change to a smaller needle size.**

### FIND THE RIGHT SIZE

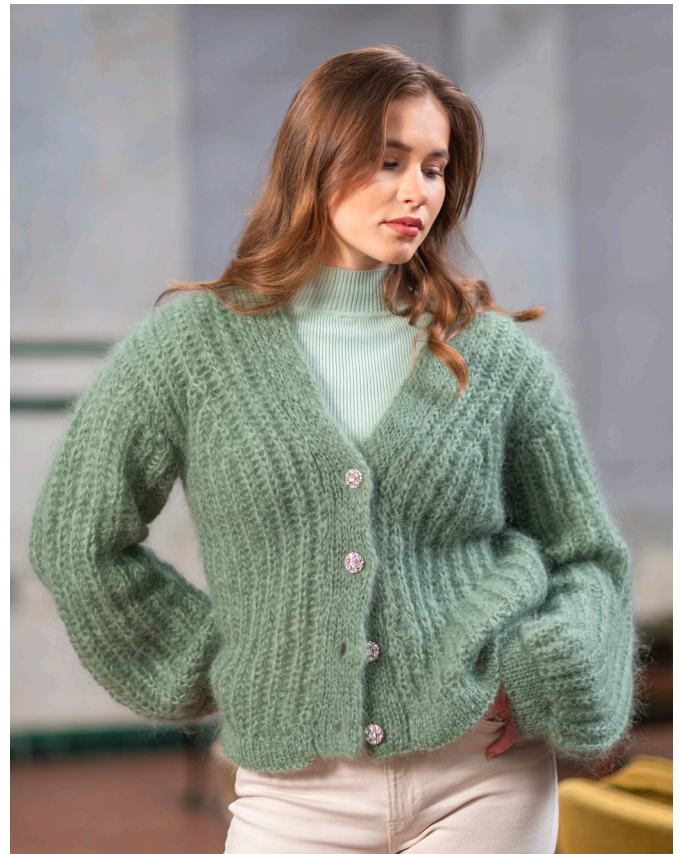
1. Measure a garment that fits you.
2. Compare the measurements with the pattern.
3. Choose your size from the chest measurements.
4. Body and sleeves can be worked longer or shorter as needed.

### ABBREVIATIONS

K = knit, P = purl, st. = stitch, r = row, DPN = double pointed needles, m1r = make one right, m1l = make one left

#### © House of Yarn AS

The copying and publication of materials and patterns, or their use for commercial purposes, is not allowed without prior agreement with House of Yarn AS.



### ENGLISH RIB

**Row 1:**(= right side) Work 1 edge st, \*K1, 1 yarn over, slip 1 st\*, repeat from \*-\*, finish with K1, 1 edge st.

**Row 2:** Work 1 edge st, \*1 yarn over, slip 1 st purl-wise, knit together yarn over + st from previous row \*, repeat from \*-\*, finish with 1 yarn over, slip 1 st purl-wise, 1 edge st.

**Row 3:** Work 1 edge st, \*knit together yarn over + st from previous row, 1 yarn over, slip 1 st purl-wise\*, repeat from \*-\*, finish by knitting together yarn over + st from previous row, 1 edge st.

**Repeat rows 2 and 3.**

**The edge-sts** are knitted on all rows.

**DOUBLE KNIT:** \*K1, slip 1 st purl-wise with strand at front of piece\*, repeat from \*-\* to end of row.

### FRONT AND BACK PIECES

Cast on 113 (119) 133 (143) 157 (171) 191 (197) sts with size 5.5 mm needles and work 4 cm stocking st. back and forth, with 1 edge-st on each side. K 1 row from the wrong side or P 1 row from the right side (= folding edge). **NOTE!** The piece is now measured from here. Work 4 cm stocking st. Finish with a purl row from the wrong side, **at the same time** as you decrease 40 (42) 48 (52) 58 (64) 72 (74) sts evenly spaced = 73 (77) 85 (91) 99 (107) 119 (123) sts. Insert a marker in each side with 35 (37) 41 (45) 49 (53) 59 (61) sts on the back piece and 19 (20) 22 (23) 25 (27) 30 (31) sts on each front piece. Change to needle size 7 mm and continue with **English rib** (row 1 from right side). Work until the piece measures 33 (34) 34 (35) 36 (37) 38 (39) cm. Divide the piece at each marker and finish the front and back pieces separately.



### BACK PIECE

= 35 (37) 41 (45) 49 (53) 59 (61) sts.

Continue back and forth as before with **English rib**. When the piece measures 49 (51) 52 (54) 56 (58) 60 (62) cm, cast off the middle 9 (9) 9 (11) 11 (11) 11 (11) sts for the neck and finish each side separately. Cast off for the neck every 2nd row, 1,1 st = 11 (12) 14 (15) 17 (19) 22 (23) shoulder-sts. Work until the piece measures 51 (53) 54 (56) 58 (60) 62 (64) cm. Loosely cast off with K and P. Work the other shoulder in the same way but in reverse.

### RIGHT FRONT PIECE

= 19 (20) 22 (23) 25 (27) 30 (31) sts.

Work in the same way as the back piece. **At the same time**, when the piece measures 35 (36) 36 (37) 38 (39) 40 (41) cm, decrease for V-neck on next row from right side as follows: Work 7 sts **English rib**, \*slip next st (yarn over and st from previous row), K2 together (1 purled st and yarn over + st from previous row), pass the slipped st over. Work **English rib** to end of row\*. Repeat from \*-\*, every 6th row, a total of 4 times = 11 (12) 14 (15) 17 (19) 22 (23) shoulder-sts.

### LEFT FRONT PIECE

Work in same way as right front piece. Decrease for V-neck from right side as follows: Work 9 (10) 12 (13) 15 (17) 20 (21) sts **English rib**, \* K2 together (yarn over + st from previous row and 1 purled st), place sts back on left needle. Pass 2nd st on left needle (yarn over + st from previous row) over first st on left needle. Move st from left needle onto right needle. Work **English rib** to end of row\*. Repeat from \*-\*, every 6th

row a total of 4 times, working 2 fewer sts with **English rib** every time you decrease.

### SLEEVES

Cast on 29 (29) 31 (33) 33 (33) 35 (35) 37 sts, using size 5.5 mm needles. Work 4 cm stocking st. back and forth, with 1 edge-st on each side. K 1 row from wrong side or P 1 row from right side (= folding edge). **NOTE!** The piece is now measured from here. Work 4 cm stocking st. Finish with a purled row from wrong side, **at the same time** as you increase 4 (6) 6 (6) 8 (8) 10 (10) sts evenly spaced = 33 (35) 37 (39) 41 (43) 45 (47) sts. Change to needle size 7 mm and continue with **English rib** (row 1 from right side). Work until the sleeve measures 48 cm, or to desired Length. Loosely cast off with K and P. Work one more sleeve in the same way.

### ASSEMBLY

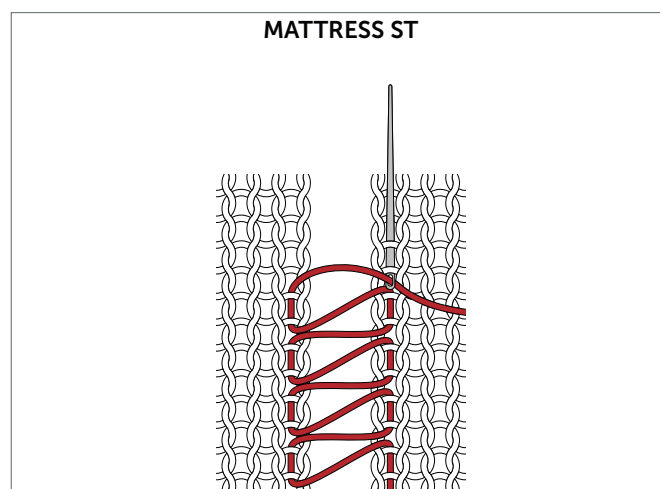
Sew together the shoulder seams. Sew in the sleeves. Fold the bottom edge to the inside and sew down with loose stitches.

### LEFT EDGE

Cast on 12 sts with needle size 5.5 mm. Work **double knit** (row 1 = wrong side) back and forth, until the edge reaches mid-back of neck when well-stretched. On last row from right side, K all stitches together 2 and 2, **at the same time** as casting off. Sew the edge to the front piece with mattress sts. Mark positions for 4-5 buttons, the top one approx. 6 cm below the beginning of the V-neck and the bottom one approx. 1.5 cm from the cast-on edge.

### RIGHT EDGE

Work in same way as left edge, working buttonholes which correspond to the buttons as follows: Begin with row 1 from right side. Work the first 6 sts back and forth for 6 rows. Cut strand. Leave the sts on the needle and work in the same way over the other 6 sts. Now work over all sts. Sew the edge to the front piece with mattress sts. Sew the front edges together mid-back of neck. Sew on the buttons.



Do you need inspiration for your next knitting project? Check out the website [houseofyarn.no](http://houseofyarn.no)