



PATTERN | 418-06 | WOMEN

ICE ROSE JUMPER

DENIM | ALPAKKA FORTE



#dalegarn #DG
#houseofyarn_norway

U U |||
3+3.5 3+3.5 3+3.5

ICE ROSE JUMPER DENIM

YARN USED IN THIS PATTERN

ALPAKKA FORTE 80 % alpaca, 20 % nylon,
50 grams = approx. 133 metres

DESIGN Kari Haugen

SIZES XS (S) M (L) XL XXL

NOTE! See [GARMENT MEASUREMENTS](#) to find the right size

GARMENT MEASUREMENTS

Chest size approx. 89 (97) 103 (110) 118 (124) cm
Full length to high
neck mid-front approx. 58 (60) 62 (64) 66 (68) cm
Sleeve-length approx. 48 cm (in all sizes)

YARN AMOUNTS

Colour 1: 7 (8) 9 (10) 10 (11) balls
Colour 2: 3 (3) 4 (4) 5 (5) balls
Colour 3: 1 ball in all sizes

COLOUR

Colour 1: Mottled denim 707
Colour 2: Mottled latte beige 701
Colour 3: Light mottled sea green 713

SUGGESTED NEEDLE SIZES

3 mm and 3.5 mm long and short circular needles and DPNs

KNITTING TENSION

25 sts with stocking st and needle size 3.5 mm = 10 cm

ALTERNATIVE YARN ALPAKKA, ALPAKKA SPACE DYE

How to find the correct size

1. Measure a garment that fits.
2. Compare the measurements with the pattern.
3. Choose your size from the chest measurements.
4. Body and sleeves can be worked longer or shorter as needed.

Check your knitting tension by working a swatch.
Count the number of sts per 10 cm; if you have more sts than suggested, change to a larger needle size. If you have fewer sts, change to a smaller needle size.

ABBREVIATIONS

K = knit, P = purl, st. = stitch, r = row, DPN = double pointed needles, m1r = make one right, m1l = make one left

Pattern designed by Anne-Kirsti Espenes

© House of Yarn AS

The copying and publication of materials and patterns, or their use for commercial purposes, is not allowed without prior agreement with House of Yarn AS.



PHOTO: WENCHE HOEL-RNAL @PHOTOWENCHE | STYLIST: JAN GUNNAR SVENSON @STYLESVENSON | DESIGN AND LAYOUT: HOUSE OF YARN

BODY

Cast on 220 (240) 256 (272) 292 (308) sts with colour 1 and 3 mm circular needles. Work rib in the round (K2, P2) for 8 cm. **At the same**, on the last round, adjust st-number to 222 (242) 258 (274) 294 (310) sts. Insert a marker in each side with 111 (121) 129 (137) 147 (155) sts on both the front and back pieces. Change to 3.5 mm needles. Work stocking st until the piece measures 35 (36) 38 (39) 40 (42) cm, **at the same time** on the last round, cast off 8 (10) 10 (10) 12 (12) sts each side for armholes (= 4 (5) 5 (5) 6 (6) sts on each side of marker-sts) = 103 (111) 119 (127) 135 (143) sts on front and back pieces. Lay the piece to one side and work the sleeves.

SLEEVES

Cast on 52 (56) 60 (60) 64 (64) sts with colour 2 and DPNs size 3 mm. Work rib in the round (K2, P2) for 15 cm. Change to 3.5 mm circular needle. Work 1 round stocking st, **at the same time** increase to 103 (111) 119 (119) 127 (127) sts as follows: *K1, lift strand before next st and K it twisted*, repeat from *-* to end of round, finishing with K1. Insert a marker round 2 sts mid-under sleeve. Work stocking st and pattern according to diagram **A**. Count out from middle of sleeve to determine where diagram should begin. Continue with stocking st in colour 1. When the piece measures 26cm, decrease 1 st on each side of marker-st Repeat the decrease every 1.5 cm a total of 8 (10) 12 (10) 11 (9) times = 87 (91) 95 (99) 105 (109) sts. Work until the sleeve measures 48 cm, or to desired length. **At the same time**, on the last round cast off 8 (10) 10 (10) 12 (12) sts mid-under sleeve (= marker-st + 3 (4) 4 (4) 5 (5) sts on each side) = 79 (81) 85 (89) 93 (97) sts. Lay the sleeve to one side and work the other sleeve.

YOKE

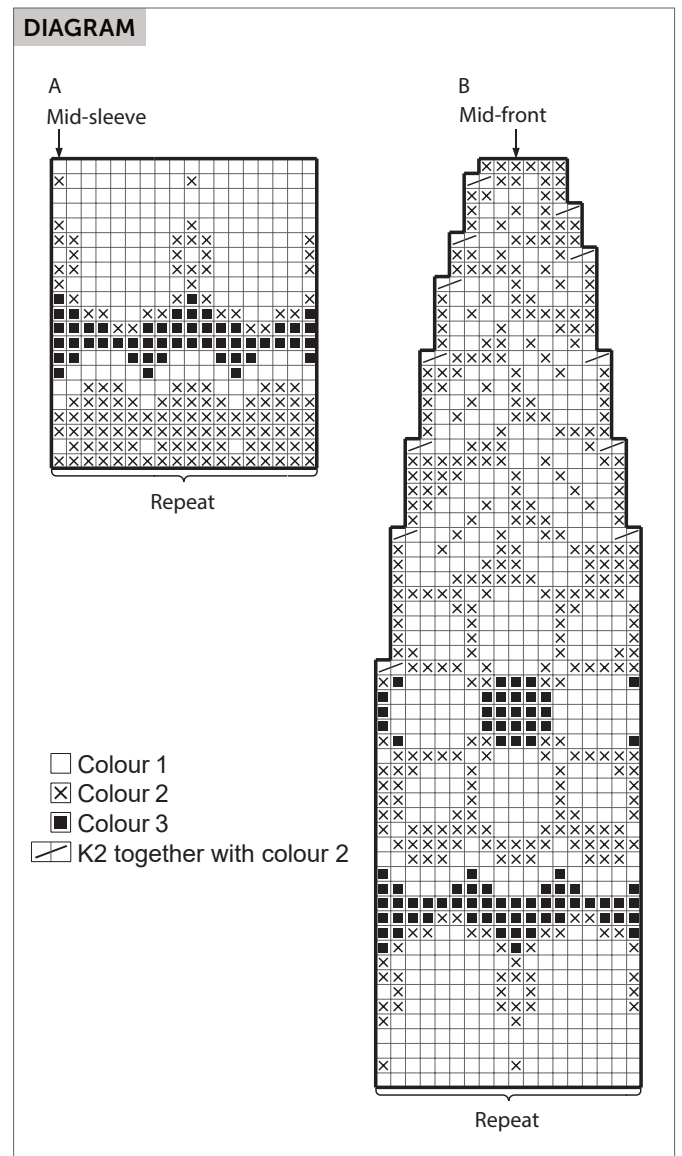
Place left sleeve, front piece, right sleeve and back piece on circular needle size 3.5 mm = 364 (384) 408 (432) 456 (480) sts. Work 1 (2) 3 (4) 5 (5) rounds with colour 1, **at the same time** on the last round, decrease 4 (6) 12 (18) 24 (30) sts evenly spaced = 360 (378) 396 (414) 432 (450) sts. Work stocking st and pattern according to diagram **B** = 120 (126) 132 (138) 144 (150) sts. **NOTE!** Count out from the middle of front piece where the diagram should begin. Work 1 (2) 3 (4) 5 (5) rounds stocking st with colour 2, **at the same time** on the last round, decrease 0 (2) 4 (6) 8 (10) sts evenly spaced = 120 (124) 128 (132) 136 (140) sts.

NECKLINE

Change to 3 mm circular needle. Work 18 cm rib with K2, P2. Loosely cast off.

ASSEMBLY

Sew together under the sleeves. Fold neck double to the right side.



Do you need inspiration for your next knitting project? Check out the website houseofyarn.no