



DALE<sup>®</sup>  
GARN

HOUSE of YARN

# CRÈME CARDIGAN

DG 416-19 | TYNN KIDSILK ERLE



DG 416-19

## CRÈME CARDIGAN

### DESIGN

Brit Frafjord Ørstavik

### YARN

TYNN KIDSILK ERLE 53 % mohair, 34 % silk, 13 % wool,  
25 grams = approx. 287.5 metres

**Alternative yarn:** 1 strand of KIDSILK ERLE

### SIZES

S (M) L (XL) XXL

**NOTE!** See MEASUREMENTS to find your size

### MEASUREMENTS

Upper body approx. 92 (100) 108 (118) 130 cm

Full length approx. 56 (58) 60 (62) 64 cm

Sleeves approx. 49 cm or to desired length

### YARN REQUIREMENTS

Colour 1 4 (4) 5 (5) 6 balls

Colour 2 4 (4) 5 (5) 6 balls

### COLOURS

Colour 1 Mottled Green 4017

Colour 2 Army Green 4012

### SUGGESTED NEEDLES

3 mm and 3.5 mm long circular needles

3 mm short circular needles

### ACCESSORIES

7 (7) 9 (9) 9 buttons

### GAUGE

22 sts stocking st and textured pattern and with yarn  
held double on 3.5 mm needles = 10 cm

**Check your gauge by working a swatch.**

**Count the number of sts per 10 cm. If you have more  
sts than suggested, change to a larger needle size.**

**If you have fewer sts change to a smaller needle size.**

### FIND YOUR SIZE

1. Measure a knitted garment that fits.
2. Compare your measurements with those in the pattern.
3. Select your size based on the upper body measurements.
4. Body and sleeves may be worked longer or shorter as desired.

### ABBREVIATIONS

k = knit, p = purl, st = stitch, R = round/row,

DPN = double pointed needles, k2tog = knit 2 together,

m = marker, PM = place marker, tbl = through back loop,

m1l = make one left, m1r = make one right,

RS/WS = right/wrong side



**The first and last sts on each R are always knitted (edge sts).  
The cardigan is worked with 1 strand of each colour  
held double.**

### FRONT AND BACK PIECES

Using 3 mm circular needles, cast on 196 (214) 232

(254) 280 sts and work 3 cm of stocking st flat.

Finish with 1 R from RS. P 1 R from the WS = folding edge.

**Further measurements to be taken from here.**

Change to 3.5 mm needles and work stocking st, **while at  
the same time** casting on 1 st in each side (= new edge st)  
= 198 (216) 234 (256) 282 sts.

PM in each side, with 48 (53) 57 (63) 69 sts for each front  
piece and 102 (110) 120 (130) 144 sts for back piece.

When the piece measures 25 (26) 27 (29) 30 cm, continue as  
follows: K1 (edge st), work diagram **A**, work stocking st until  
11 sts remain, work diagram **B**, K1 (edge st).

**NOTE!** Fewer sts will be worked in stocking st as more sts  
are worked progressively into diagrams **A** and **B**.

Work until the piece measures 34 (36) 37 (38) 39 cm,  
finishing with a RS R. **At the same time**, on the final R, cast  
off 8 sts in each side for armholes (= 4 sts on each side of  
the m) = 94 (102) 112 (122) 136 sts for the back piece and  
44 (49) 53 (59) 65 sts for each front piece.

Put aside and work the sleeves.

### © House of Yarn AS

The copying and publication of materials and patterns,  
or their use for commercial purposes, is not allowed  
without prior agreement with House of Yarn AS.



## SLEEVES

Using 3 mm DPNs, cast on 40 (42) 44 (46) 48 sts and work twisted rib in the round for 12 cm (K1 tbl, P1).

Change to 3.5 mm needles and continue with stocking st.

**At the same time** on R1, increase 36 (38) 40 (42) 44 sts using Y/Os = 76 (80) 84 (88) 92 sts. On the next R, K the Y/Os tbl. PM at beginning of R.

When the sleeve measures 39 cm (all sizes), continue as follows: Work 33 (35) 37 (39) 41 sts of stocking st, work diagram **C**, 33 (35) 37 (39) 41 sts stocking st.

**NOTE!** Expand diagram **C** as indicated in pattern.

Work until the sleeve measures 49 cm, finish on the same R in the diagram as on the body. **At the same time** on the last round, cast off 8 sts under the sleeve (= 4 sts on each side of m) = 68 (72) 76 (80) 84 sts.

Work one more sleeve in the same way.

## YOKE

Place the right front piece, right sleeve, back piece, left sleeve and left front piece on the same 3.5 mm circular needles = 318 (344) 370 (400) 434 sts.

Keep working in pattern as before across the front pieces and sleeves, and stocking st across the back piece.

Work 1 R from the WS, **at the same time** as 1 st from the sleeve and 1 st from the front or back piece are Ptog in each transition = 314 (340) 366 (396) 430 sts.

PM around this st and 2 sts on each side = 5 m sts. M sts are always worked as follows:

**RS:** P1, K1 tbl, P1, K1 tbl, P1.

**WS:** K1, P1 tbl, K1, P1 tbl, K1.

**At the same time** on R2, begin to decrease for raglan on each side of each set of m sts as follows: Slip 1 st knit-wise, slip next st knit-wise, place sts back on left hand needle and K2tog tbl before each m, K2tog after each m.

From the WS, decrease for raglan as follows: P2tog before each m. After each m slip 1 st knit-wise, slip next st knit-wise, place sts back on left hand needle and P2tog tbl.

Repeat the raglan decreases on ever 2nd R, 24 more times (all sizes), then on each R until you have decreased 27 (29) 31 (33) 35 times in total. **At the same time**, when you have

decreased 19 (21) 23 (25) 27 times for raglan, cast off the first and last 10 sts for the neckline.

Continue casting off for the neckline 3,2,2 sts on each side, then 1 st until you have decreased for raglan a total of 27 (29) 31 (33) 35 times on back piece.

**NOTE!** Raglan decreases are worked as before while casting off for the neckline, as long as enough sts remain. Leave sts on the needle for neckline.

## ASSEMBLY

Join the underarm seams.

### LEFT FRONT EDGE

Cast on 13 sts on 3 mm needles and work flat as follows:

**R1:** (= WS) \*K1, slip 1 st purl-wise with working yarn in front\*, repeat from \*-\* until 1 st remains, K1 (edge st).

**R2:** K1 (edge st), \*K1, slip 1 st purl-wise with working yarn in front\*, repeat from \*-\* to end of R.

Repeat R 1 and 2 until the work is the same length as the front edge of the cardigan when stretched.

Finish with 1 R from RS.

Cast off edge sts, leave remaining sts on the needle.

Mark positions for 7 (7) 9 (9) 9 buttons, the bottom one approx. 1.5 cm up from the cast-on edge, the rest distributed evenly. **NOTE!** The last button is on the neck.

### RIGHT FRONT EDGE

Cast on 13 sts on 3 mm needles and work flat as follows:

**R1:** (= WS) K1 (edge st), \*K1, slip 1 st purl-wise with working yarn in front\*, repeat from \*-\* to end of R.

**R2:** \*K1, slip 1 st purl-wise with working yarn in front\*, repeat from \*-\* until 1 st remains, K1 (edge st).

Repeat R 1 and 2, until the work is the same length as the front edge of the cardigan when stretched.

Finish with 1 R from RS.

Cast off edge sts, leave remaining sts on the needle.

**NOTE!** Work buttonholes corresponding to the button positions as follows: Begin with 1 R from RS. Work the first 6 sts flat for 5 rows in total. Cut yarn.

Leave the sts on the needle and work in the same way across the remaining 7 sts (including edge st). K across all sts.

Join the front edges to each front side using mattress st, inside the edge st.

### NECKLINE

Using 3 mm needles, pick up 1 st through each st/R, join together with sts from needle and front edge sts. St count must be divisible by 2.

Continue as on the front pieces (make sure to work the front edge sts as before), R1 is from the WS.

**NOTE!** Remember to work the last buttonhole when the neckline measures 1 cm.

Continue working until the neckline measures 3 cm.

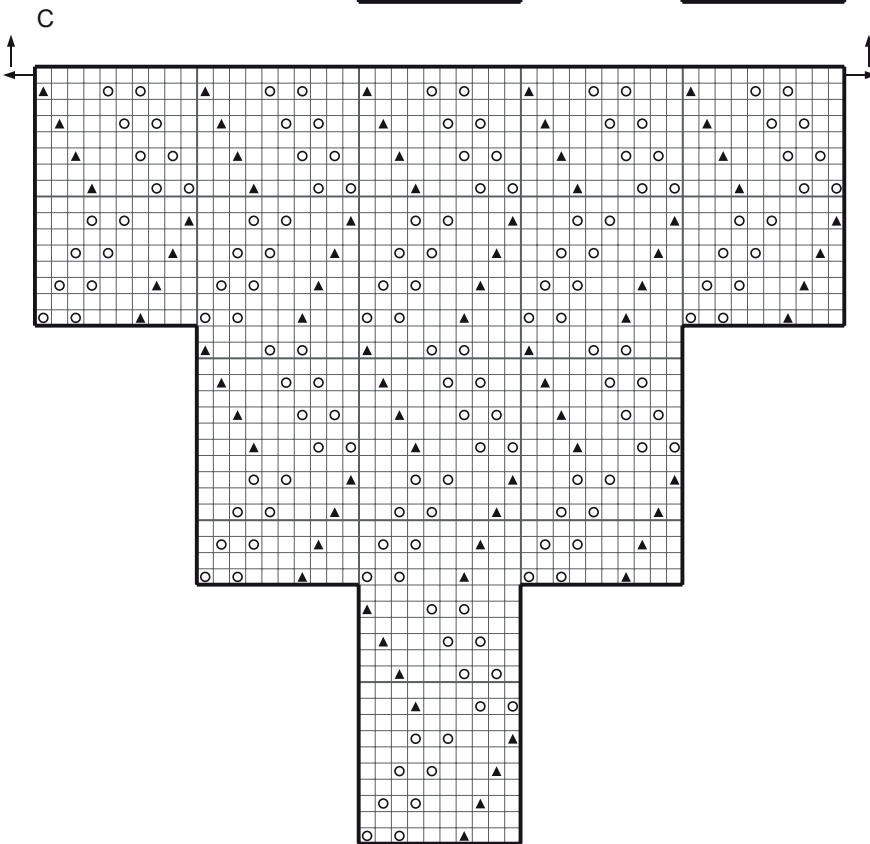
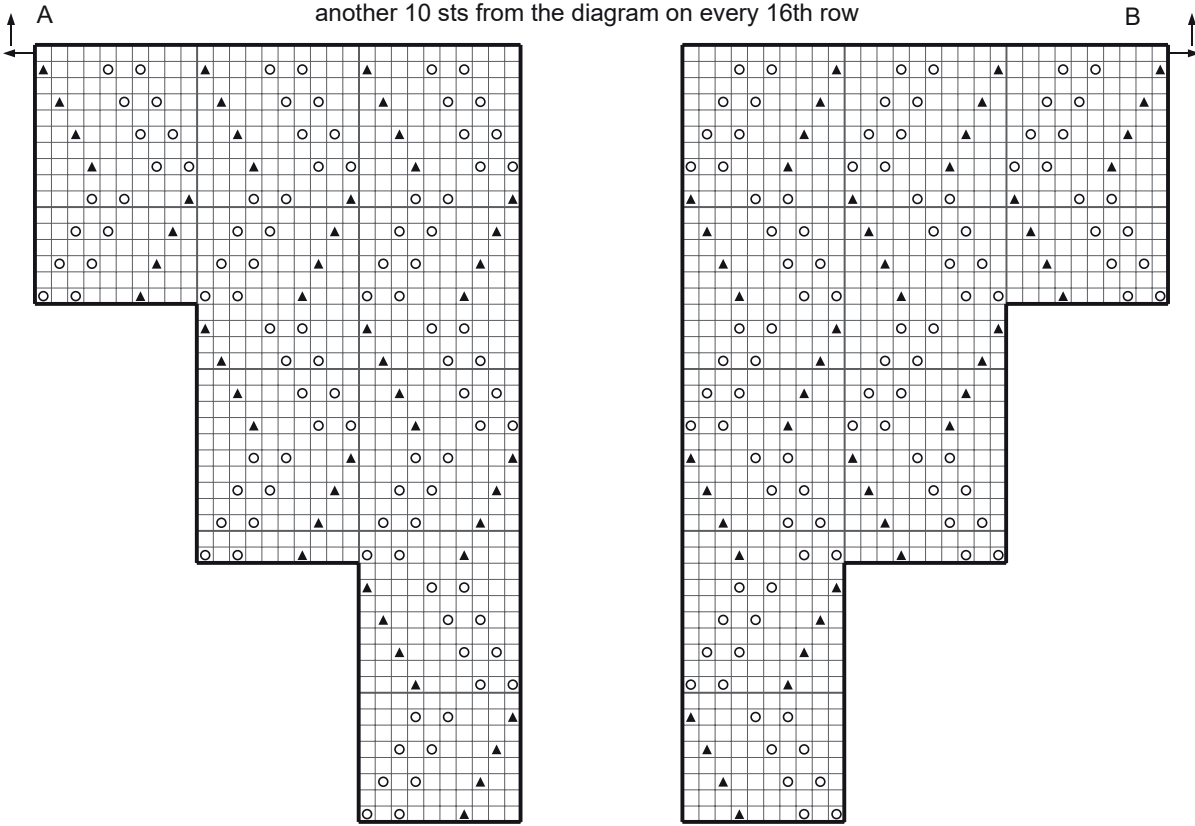
Cast off from RS as follows: \*K2tog tbl, place st back on left needle\*, repeat from \*-\* to end of R.

**NOTE!** Take care not to work too tightly.

Sew on the buttons.

**DIAGRAM**

Follow the arrows: Continue like this, including another 10 sts from the diagram on every 16th row



Follow the arrows: Continue like this, including another 20 sts from the diagram on every 16th row = 10 sts on each side of the diagram

- K on RS, P on WS
- Y/O
- ▲ Slip 2 sts knit-wise, k1, pass slipped sts over

Do you need inspiration for your next knitting project? Check out the website [houseofyarn.no](http://houseofyarn.no)