



DALE[®]
GARN

HOUSE of YARN

FRIIS TOP

DG 453-02 | LERKE



Dale Garn – a part of HOUSE of YARN

DG 453-02

FRIIS TOP

DESIGN

Iselin Hafselid

YARN

LERKE 53 % merino wool, 47 % Egyptian cotton,
50 grams = approx. 115 metres

Alternative yarn: MERINO 22

SIZES

XS (S) M (L) XL (XXL) XXXL

NOTE! See MEASUREMENTS to find your size

MEASUREMENTS

Upper body approx. 82 (87) 98 (104) 115 (125) 131 cm

Full length approx. 52 (54) 56 (58) 60 (62) 64 cm

Sleeves approx. 16 cm or your preferred length

YARN REQUIREMENTS

| | |
|----------|---------------------------|
| Colour 1 | 2 (2) 2 (2) 3 (3) 3 balls |
| Colour 2 | 3 (3) 4 (4) 4 (5) 5 balls |
| Colour 3 | 4 (4) 4 (5) 5 (6) 6 balls |
| Colour 4 | 3 (3) 3 (3) 4 (4) 4 balls |
| Colour 5 | 2 (2) 3 (3) 3 (3) 4 balls |
| Colour 6 | 2 balls in all sizes |

COLOURS

| | |
|----------|-----------------------|
| Colour 1 | Black 8107 |
| Colour 2 | Unbleached white 0020 |
| Colour 3 | Camel 2641 |
| Colour 4 | Dark Olive 8118 |
| Colour 5 | Blue Jeans 8138 |
| Colour 6 | Red 4018 |

CROCHET HOOK

4 mm

GAUGE

22 dc and pattern with 4 mm hook = 10 cm

Check your gauge by working a swatch.

Count the number of stitches per 10 cm; if you have more than suggested, change to a larger hook size. If you have fewer stitches, change to a smaller hook size.

FIND YOUR SIZE

1. Measure a garment that fits you.
2. Compare your measurements with those in the pattern.
3. Select your size based on the upper body measurements.
4. Body and sleeves may be worked longer or shorter as desired.

ABBREVIATIONS

ch = chain st, dc = double crochet, tr = treble crochet,
ss = slip st, R = row, WS/RS = wrong side/right side



DIAGRAM A

R1: (= WS) 1 ch, 1 dc through 2nd ch from the hook, skip 2 chs, 5 trs through next ch, skip 2 chs, *1 dc in next chs, skip 2 ch, 5 trs in next ch, skip 2 chs*, repeat from *-* . End with 1 dc through the last ch.

R2: Work 3 chs, then 2 trs in the same dc, skip 2 trs, 1 dc in 3rd tr, *skip 2 trs, then 5 trs in dc, skip 2 trs, 1 dc in 3rd tr*, repeat from *-* , finish with: skip 2 trs, 3 trs in last dc. Turn.

R3: Work 1 ch, then 1 dc in the same tr, skip 2 trs, 5 trs in dc, *skip 2 trs, 1 dc in 3rd tr, skip 2 trs, 5 trs in dc*, repeat from *-* . Finish with: skip 2 trs, 1 dc in last tr. Turn. Repeat R 2 and 3.

© House of Yarn AS

The copying and publication of materials and patterns, or their use for commercial purposes, is not allowed without prior agreement with House of Yarn AS.

Photo: Willy Nikkers

DIAGRAM B

R1: (= RS) **Colour 4.** Work 3 chs = 1 tr, then 1 tr through each tr/dc to end of R. Turn.

R2: **Colour 3.** Work 3 chs, then 1 tr through each tr to end of R. Turn.

R3: **Colour 5.** Work as R2.

R4: **Colour 2.** Work 3 chs (= 1 htr + 1 ch), skip 1 tr, *1htr through next tr, 1 ch, skip 1 tr*, repeat from *-* to end of row. End with 1 htr through the last tr. Turn.

R5: **Colour 2.** Work 2 ch = 1 htr, 1 htr in next ch, *1 ch, skip 1 htr, 1 htr in next ch*, repeat from *-* , end with 1 htr in last htr. Turn.

R6: **Colour 1.** Work 2 ch = 1 dc, skip 1 htr, *2 dc through next ch, skip 1 htr*, repeat from *-* to end of row. End with 1 dc through each of the last 2 htrs. Turn.

R7: **Colour 6.** Work 2 chs = 1 dc, 1 dc in each dc to end of row. Turn.

R8: **Colour 4.** Work 4 chs = 1 tr + 1 ch, *skip 1 dc, 1 tr in next dc, 1 ch*, repeat from*-* to end of round, end with 1 tr in last dc. Turn.

R9: **Colour 3.** Work 2 ch = 1 dc, 2 dcs in next ch, *skip 1 tr, 2 dc in ch*, repeat from *-* to end of row. Turn.

R10: **Colour 5.** Work 2 chs = 1 dc, 1 dc in each dc to end of row. Turn.

R11: **Colour 3.** Work as R10.

R12: **Colour 1.** Work as R10.

BACK PIECE

Cast on 91 (97) 109 (115) 127 (139) 145 loose chs, using colour 2 and a 4 mm hook. Work 9 Rs of diagram **A** (= 15 (16) 18 (19) 21 (23) 24 repeats on a R) back and forth. Follow written instructions, or follow diagram.

NOTE! Change to a new colour after each R. Start with colour 2, then colour 3, colour 4, colour 5, colour 1, colour 6, colour 2, colour 3, colour 2.

Work diagram **B**. Follow written instructions, or follow diagram.

Then work diagram **A**, then repeat diagram **B** for the rest of the piece.

When the piece measures approx. 36 (37) 38 (39) 40 (41) 42 cm, cast off for armholes as follows: Work ss over the first 6 tr/dc/chs, work until 5 tr/dc/chs remain. Turn, and work to end of R = 81 (87) 99 (105) 117 (129) 135 sts.

Continue casting off on each R from the RS as follows: Work ss over the first 2 tr/dc/chs, work until 1 tr/dc/ch remains.

Turn, and work to end of R. Repeat the decreases a total of 4 (5) 5 (5) 6 (6) 7 times = 73 (77) 89 (95) 105 (117) 121 sts.

Work until the piece measures approx. 52 (54) 56 (58) 60 (62) 64 cm. End with 1 R of dc with colour 2. Cut yarn.

FRONT PIECE

Work in the same way as the back piece until the front measures 44 (46) 48 (50) 52 (54) 56 cm.

PM on each side of the 17 (19) 21 (23) 23 (25) 25 middle sts = neckline, and finish each piece separately.

Left side

= 28 (29) 34 (36) 41 (46) 48 sts.

Begin from the RS, and work until 1 st remains before the neckline. Turn, and work to end of R. Repeat the decreases 10 times in total = 18 (19) 24 (26) 31 (36) 38 sts for the shoulder. Work until the piece measures approx. 52 (54) 56 (58) 60 (62) 64 cm. End with 1 R of dc with colour 2. Cut yarn.

Right side

= 28 (29) 34 (36) 41 (46) 48 sts.

First row is worked from RS. Skip 1 tr/dc/ch by the neckline and work to end of R. Turn and work to end of R. Repeat the decreases 10 times in total = 18 (19) 24 (26) 31 (36) 38 sts for the shoulder. Work until the piece measures 52 (54) 56 (58) 60 (62) 64 cm. End with 1 R of dc with colour 2. Cut yarn.

SLEEVES

Cast on 65 (69) 73 (79) 85 (85) 91 loose chs, using colour 2 and a 4 mm hook. Work back and forth as follows: Work 3 chs, then 1 tr in the 4th ch from the hook, then 1 tr in each ch to end of R, work 1 R with colour 2, then 1 R with colour 3. Continue with colour 3 and work 1 R dc, **at the same time** as you increase 32 (34) 36 (36) 30 (36) 30 sts by working 2 dcs in 1 tr evenly spaced = 97 (103) 109 (115) 115 (121) 121 sts. Work 9 Rs of diagram **A** (= 16 (17) 18 (19) 19 (20) 20 repeats on a R). **NOTE!** Change to a new colour after each R. Start with colour 2, then colour 3, colour 4, colour 5, colour 1, colour 6, colour 2, colour 3, colour 2.

Continue working diagram **B** for the rest of the piece.

When the sleeve measures 16 cm, cast off 5 sts on each side as follows: Work ss over the first 6 tr/dc/chs, work until 5 tr/dc/chs remain. Turn and work to end of R = 87 (93) 99 (105) 105 (111) 111 sts. Keep casting off for the shoulder on every RS R in the same way 6,5,5,5,4 tr/dc/chs = 37 (43) 49 (55) 55 (61) 61 sts. End with 1 R of dc with colour 2. Cut yarn.

ASSEMBLY

Join the side and shoulder seams, and the underarm seams. Baste a strand of yarn through the top of the sleeve. Use it to pull the sleeve tighter so its width matches the armhole. Sew or crochet the sleeves to the body. Make sure middle of sleeve matches the shoulder seam.

NECKLINE

Work 1 R of dc around the neckline using colour 4 and a 4 mm hook. Begin by one shoulder seam, st count must be divisible by 6+1. **NOTE!** Make sure there are the same number of sts on each side in front, and that the edge is nice and even. You'll especially need to take care along the trs to make it even. Continue with 1 R of dc with colour 4, then 1 R of dc using colour 3. Change to colour 2 and work 1 ch, 1 dc in 1st dc, *skip 2 dcs, 5 trs in next dc, skip 2 dcs, 1 dc*. Repeat from *-* around the neck.

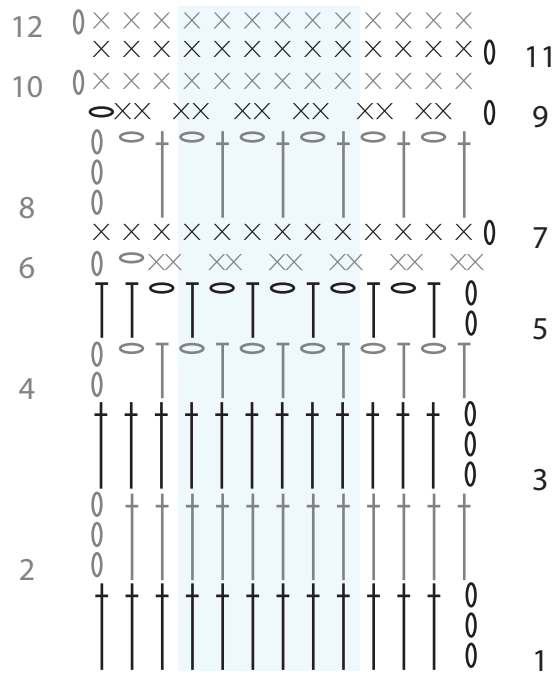
EDGE ON BOTTOM OF BODY

Crochet an edge around the bottom of the body using colour 1 and a 4 mm hook as follows: Fasten the working yarn in the middle of a group of trs and *work 1 dc, skip 2 chs, 5 trs in next ch, skip 2 chs*, repeat from *-* to end of R. Work together with 1 ss in the first dc.

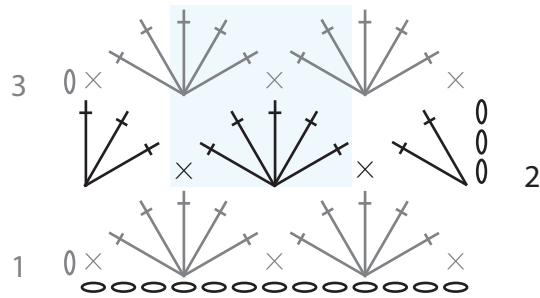


DIAGRAM

LACE PATTERN B



LACE PATTERN A



- o = ch
- x = dc
- T = htr
- ↑ = tr
- = 1 repeat

Do you need inspiration for your next knitting project? Check out the website houseofyarn.no