



DALE<sup>®</sup>  
GARN

HOUSE of YARN

# MALLI JUMPER

DG 469-01 | MULTI POPKORN



Dale Garn – a part of HOUSE of YARN



DG 469-01

## MALLI JUMPER

### DESIGN

Ane Kydland Thomassen

### YARN

MULTI POPKORN 12 % mohair, 24 % wool, 24 % acrylic, 9 % nylon, 31 % polyester, 50 grams = approx. 135 metres

### SIZES

XS (S-M) L (XL-XXL)

**NOTE!** This garment is designed to be oversized. Consult the garment measurements below to choose your size.

### MEASUREMENTS

Upper body approx. 100 (113) 125 (138) cm

Full length approx. 54 (56) 58 (60) cm

Sleeves approx. 46 cm or to desired length

### YARN REQUIREMENTS

Colour 1	2 (2) 3 (3) balls
Colour 2	2 balls in all sizes
Colour 3	2 balls in all sizes
Colour 4	2 (2) 3 (3) balls

### COLOURS

Colour 1	Pink 505
Colour 2	Dusty Pink 503
Colour 3	Light Blue 506
Colour 4	White 501

### SUGGESTED NEEDLES

4 mm and 5 mm long and short circular needles

### GAUGE

16 sts x 21 R stocking st and pattern on 5 mm needles = 10 cm

**Check your gauge by working a swatch.**

**Count the number of sts per 10 cm. If you have more sts than suggested, change to a larger needle size. If you have fewer sts change to a smaller needle size.**

### FIND YOUR SIZE

1. Measure a knitted garment that fits.
2. Compare your measurements with those in the pattern.
3. Select your size based on the upper body measurements.
4. Body and sleeves may be worked longer or shorter as desired.

### ABBREVIATIONS

k = knit, p = purl, st = stitch, R = round/row, DPN = double pointed needles, k2tog = knit 2 together, m = marker, tbl = through back loop, RS/WS = right/wrong side



### STRIPES ON BODY

Work with colour 1 until your work measures 13 (14) 14 (15) cm from the cast-on edge, work 13 (14) 14 (15) cm with colour 2, 13 (14) 14 (15) cm with colour 3, finish the work with colour 4.

### BODY

Using 4 mm needles and colour 1, cast on 160 (180) 200 (220) sts.

Work rib in the round (K2, P2) for 6 cm. PM in each side with 80 (90) 100 (110) sts for both the front and back pieces.

Change to 5 mm needles and continue with stocking st and **stripes**. **At the same time**, when the piece measures 28 (28) 28 (30) cm, continue as follows: Work 31 (36) 41 (46) sts stocking st, work pattern according to the diagram, then stocking st to end of R. **NOTE!** Diagram begins 1 st earlier with each R of decreases/increases.

When the piece measures approx. 36 (37) 38 (39) cm, divide piece by each m and finish the front and back pieces separately.

### BACK PIECE

= 80 (90) 100 (110) sts.

Working flat, continue with stocking st and **stripes**.

When the piece measures approx. 52 (54) 56 (58) cm, place the middle 26 (28) 30 (30) sts of the back piece on a st holder for the neckline.

### © House of Yarn AS

The copying and publication of materials and patterns, or their use for commercial purposes, is not allowed without prior agreement with House of Yarn AS.

Photo: House of Yarn



**NOTE!** Make sure to begin on a row so all increases and decreases in the diagram are on RS.  
 When the piece measures approx. 47 (49) 51 (53) cm, place the middle 18 (20) 22 (22) sts of the front piece on a st holder for the neckline.  
 Finish each side separately and cast off for the neckline every 2nd row: 2,2,1,1,1 st = 24 (28) 32 (37) shoulder sts.  
 Work until the piece measures 54 (56) 58 (60) cm. Cast off.  
 Work the other side in the same way but in reverse.

*We recommend you assemble the piece now, so that you can try the garment on and see if you want to make any adjustments to the sleeve length.*

### ASSEMBLY

Join the shoulder seams.

### SLEEVES

Using 5 mm needles and colour 4, pick up 56 (60) 64 (68) sts. PM under the sleeve. Work stocking st in the round.  
 When the sleeve measures 6 cm, decrease 1 st on each side of the m st, by K2tog tbl before the m and K2tog after the m. Repeat the decreases every 8 cm, 4 times in total = 48 (52) 56 (60) sts.

**At the same time**, once the sleeve measures 10 cm, change to colour 3 and work another 10 cm. Change to colour 2 and work 10 cm. Change to colour 1 and work until the sleeve measures 40 cm or to your preferred length.  
 Change to 4 mm needles and work rib (K2, P2) until the piece measures 46 cm, or your preferred length.  
 Cast off with K and P sts.

Work one more sleeve in the same way.

### NECKLINE

Place the sts from the st holders onto 4 mm needles and pick up approx. 8 sts per 5 cm round the neckline using colour 4. Work 1 round of stocking st, **at the same time** as adjusting your st count to 84 (84) 88 (88) sts.  
 Work 8 cm rib in the round with K2, P2.  
 Cast off with K and P sts.  
 Fold the neck double to the inside and sew down.

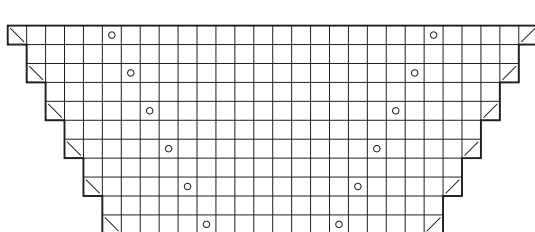
Finish each side separately and cast off for the neckline every 2nd row: 2,1 sts = 24 (28) 32 (37) shoulder sts.  
 Work until the piece measures 54 (56) 58 (60) cm. Cast off.  
 Work the other side in the same way but in reverse.

### FRONT PIECE

= 80 (90) 100 (110) sts.

Continue working flat with stocking st, **stripes** and pattern centre-front according to the diagram as before.

### DIAGRAM



Continue with the same increases/decreases until reaching full length, beginning 1 st further to the right for each row of increases/decreases and 2 more sts between the Y/Os each time

- K from RS, P from WS
- Y/O
- Slip 1 st k-wise, k1, pass slipped st over
- K2tog

Do you need inspiration for your next knitting project? Check out the website [houseofyarn.no](http://houseofyarn.no)