



CHRISTMAS TREE VEST

DSA 104-07 | ALPAKKA TWEED CLASSIC



DSA 104-07

CHRISTMAS TREE VEST

DESIGN

Ann Iren Vinningland

YARN

ALPAKKA TWEED CLASSIC 50 % alpaca, 30 % merino wool, 20 % Donegal, 50 grams = approx. 110 metres

SIZES

XXS (XS) S (M) L (XL) XXL (XXXL)

NOTE! See MEASUREMENTS to find your size

MEASUREMENTS

Upper body approx. 82 (91) 100 (109) 118 (127) 136 (145) cm

Full length approx. 52 (54) 56 (58) 60 (62) 64 (66) cm

YARN REQUIREMENTS

Colour 1 5 (5) 6 (7) 7 (8) 9 (9) balls

Colour 2 1 (1) 1 (1) 1 (2) 2 (2) balls

Colour 3 1 (1) 1 (1) 2 (2) 2 (2) balls

COLOURS

Colour 1 Beige 107

Colour 2 Red 120

Colour 3 Fir Green 132

SUGGESTED NEEDLES

3 mm and 4 mm long and short circular needles and DPNs

GAUGE

22 sts stocking st on 4 mm needles = 10 cm

Alternative yarn: STERK

Check your gauge by working a swatch.

Count the number of sts per 10 cm. If you have more sts than suggested, change to a larger needle size. If you have fewer sts change to a smaller needle size.

FIND YOUR SIZE

1. Measure a garment that fits you.
2. Compare your measurements with those in the pattern.
3. Select your size based on the upper body measurements.
4. Body and sleeves may be worked longer or shorter as needed.

ABBREVIATIONS

k = knit, p = purl, st = stitch, R = round/row, DPN = double pointed needles, m = marker, PM = place marker, tbl = through back loop, RS/WS = right/wrong side

© House of Yarn AS

The copying and publication of materials and patterns, or their use for commercial purposes, is not allowed without prior agreement with House of Yarn AS.





BODY

Cast on 180 (200) 220 (240) 260 (280) 300 (320) sts with colour 1 on 3 mm circular needles. Work 9 cm twisted rib in the round with K1 tbl, P1.

PM around 1 st in each side, with 89 (99) 109 (119) 129 (139) 149 (159) between the m for front and back pieces.

Change to 4 mm needles and work stocking st and colourwork according to the diagram.

When the piece measures 32 (33) 34 (35) 36 (37) 38 (39) cm, cast off 11 sts on each side for armholes (= m st + 5 sts on each side) = 79 (89) 99 (109) 119 (129) 139 (149) sts on front and back pieces. Finish the front and back pieces separately.

BACK PIECE

= 79 (89) 99 (109) 119 (129) 139 (149) sts.

Continue working flat with stocking st and colourwork according to diagram, and cast off for the armholes at the beginning of each R: 3,2,1,1,1 sts on each side = 63 (73) 83 (93) 103 (113) 123 (133) sts. When the piece measures 50 (52) 54 (56) 58 (60) 62 (64) cm, cast off the middle 29 (31) 33 (35) 37 (39) 41 (41) sts for the neckline. Finish each side separately,

and cast off for the neck at the beginning of every other R: 1,1 st = 15 (19) 23 (27) 31 (35) 39 (44) shoulder sts.

Work until the piece measures 52 (54) 56 (58) 60 (62)

64 (66) cm. Cast off. Work the other side in the same way but in reverse.

FRONT PIECE

= 79 (89) 99 (109) 119 (129) 139 (149) sts.

Work and cast off for the armholes in the same way as on the back piece. When the piece measures 44 (46) 48 (50) 52 (54) 56 (58) cm, cast off the middle 15 (17) 19 (21) 23

(25) 27 (27) sts for the neckline. Finish each side separately, and cast off for the neck at the beginning of every other R:

3,2,1,1,1 st = 15 (19) 23 (27) 31 (35) 39 (44) shoulder sts.

Work until the piece measures 52 (54) 56 (58) 60 (62)

64 (66) cm. Cast off. Work the other side in the same way but in reverse.

ASSEMBLY

Join the shoulder seams.

NECKLINE

Begin on one shoulder. Using 3 mm short circular needles, pick up approx. 11 sts per 5 cm with colour 1 around the neckline. St count must be divisible by 2. Work 7 cm twisted rib in the round (K1 tbl, P1). Cast off loosely. Fold the edge double to the WS and sew down with loose stitches.

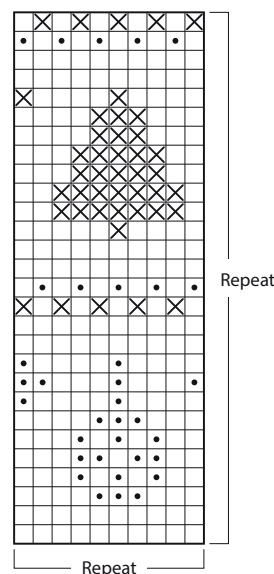
ARMHOLE EDGE

Begin at the bottom of one armhole.

Using 3 mm short circular needles, pick up approx. 11 sts per 5 cm with colour 1 around the armhole. St count must be divisible by 2. Work 7 cm twisted rib in the round (K1 tbl, P1). Cast off loosely. Fold the edge double to the WS and sew down with loose stitches.

DIAGRAM

- Colour 1
- Colour 2
- ⊗ Colour 3



Do you need inspiration for your next knitting project? Check out the website houseofyarn.no