



ICELANDIC JUMPER

DSA 109-01 | STERK



Du Store Alpakka – a part of **HOUSE of YARN**

DSA 109-01

ICELANDIC JUMPER

DESIGN

Kari Haugen

YARN

STERK 40 % alpaca, 40 % merino wool, 20 % nylon,
50 grams = approx. 137 metres

Alternative yarns: ALPAKKA TWEED CLASSIC, ALPAKKA FORTE CLASSIC, LERKE, NATURAL LANOLIN WOOL, MERINO 22

SIZES

XS (S) M (L) XL (XXL)

NOTE! See MEASUREMENTS to find your size

MEASUREMENTS

Upper body approx. 87 (98) 109 (120) 131 (142) cm

Full length approx. 60 (63) 66 (70) 72 (74) cm

Sleeves approx. 49 cm or to desired length

YARN REQUIREMENTS

Colour 1 6 (7) 8 (8) 9 (10) balls

Colour 2 (4) 4 (5) 5 (6) 6 balls

COLOURS

Colour 1 Off-White 806

Colour 2 Green 812

SUGGESTED NEEDLES

3 mm and 3.5 mm long and short circular needles and DPNs

GAUGE

22 sts x 26 R of stocking st and colourwork
on 3.5 mm needles = 10 x 10 cm

Check your gauge by working a swatch.

Count the number of sts per 10 cm. If you have more sts than suggested, change to a larger needle size. If you have fewer sts change to a smaller needle size.

FIND YOUR SIZE

1. Measure a garment that fits you.
2. Compare your measurements with those in the pattern.
3. Select your size based on the upper body measurements.
4. Body and sleeves may be worked longer or shorter as needed.

Pattern by Hrönn Jónsdóttir

ABBREVIATIONS

k = knit, p = purl, st = stitch, R = round/row,
DPN = double pointed needles, K2tog = knit 2 together,
m = marker, PM = place marker, tbl = through back loop,
RS/WS = right/wrong side



STRIPE PATTERN

6 R with colour 1
2 R with colour 2
2 R with colour 1
2 R with colour 2
2 R with colour 1
2 R with colour 2
4 R with colour 1

BODY

Cast on 192 (216) 240 (264) 288 (312) sts with colour 1 on 3 mm circular needles. Work rib in the round (K1, P1) and **stripe pattern**. PM around 1 st in each side (= m sts) with 95 (107) 119 (131) 143 (155) sts between m on the front and back pieces.

Change to 3.5 mm needles and work pattern according to the diagram. Begin by the first m st at the arrow for your selected size.

When the piece measures 37 (39) 42 (45) 47 (49) cm, cast off 15 sts for armholes on each side (= m sts + 7 sts on each side) = 81 (93) 105 (117) 129 (141) sts on front and back pieces. Leave sts on needle and work the sleeves.

© House of Yarn AS

The copying and publication of materials and patterns, or their use for commercial purposes, is not allowed without prior agreement with House of Yarn AS.

Photo: House of Yarn



For patterns for Icelandic Jumpers for the whole family, see DSA 109

SLEEVES

Cast on 44 (48) 48 (52) 56 (60) sts with colour 1 on 3 mm DPNs. Work rib in the round (K1, P1) and **stripe pattern**. PM around the first st on the R = sleeve m. Change to 3.5 mm DPNs and work according to diagram. Count outwards from middle of sleeve to determine where the diagram should begin. When the sleeve measures 9 cm, increase 1 st on each side of sleeve m. Repeat the increase every 2.5 (2) 2 (1.5) 1.5 (1.5) cm, 16 (18) 20 (22) 23 (23) times in total = 76 (84) 88 (96) 102 (106) sts. Work until the sleeve measures 49 cm or to desired length. **NOTE!** Finish on the same R as on the body. On the last R, cast off 15 underarm sts (= m sts + 7 sts on each side) = 61 (69) 73 (81) 87 (91) sts.

YOKE

Place left sleeve, front piece, right sleeve, and back piece on 3.5 mm needles = 284 (324) 356 (396) 432 (464) sts. PM around the first and last sts on the front and back pieces = 4 m sts. Always P m sts with colour 1. Continue with pattern according to diagram on each piece. On R 2, decrease for raglan by K2 tog tbl before each m and K2 tog after each m. Work the decreases with the colour which fits best with where you are in the pattern. Repeat the raglan decreases every 4th R, 3 (1) 0 (0) 0 (0) more times then every 2nd R 18 (23) 22 (21) 19 (17) times, then every R 0 (0) 8 (10) 20 (24) times. **At the same time**, when you have decreased for raglan 18 (21) 22 (23) 28 (30) times in total, cast off the middle 15 (17) 19 (21) 25 (29) sts for the neckline. Continue working flat with stocking st and in

pattern (m sts are K on WS) and continue casting off for the neck at the beginning of each R on each side 3,2 sts, then 1 st until the raglan decreases are finished on the back piece. **NOTE!** When working raglan decreases from the WS, P2 tog before each m and P2 tog tbl after each m.

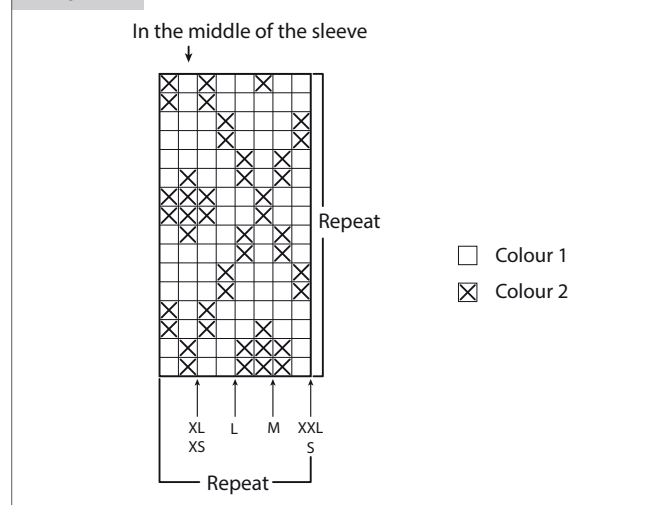
ASSEMBLY

Join underarm seams.

NECKLINE

Place yoke sts on 3 mm short circular needles. **At the same time**, pick up approx. 11 sts pr 5 cm around the neckline. St count must be divisible by 2. Work rib in the round (K1, P1). When neckline measures 18 cm, work **stripe pattern** in reverse order. Loosely cast off with rib as before. Fold the neckline double to the RS.

DIAGRAM



Do you need inspiration for your next knitting project? Check out the website houseofyarn.no