



# HEART JUMPER FOR ADULTS

DSA 73-04 | ALPAKKA TWEED



## HEART JUMPER FOR ADULTS

### DESIGN

Monica Norseth

### INSTAGRAM

@tusenogen\_maske

### YARN

ALPAKKA TWEED CLASSIC 50 % alpaca, 30 % merino wool, 20 % Donegal, 50 grams = approx. 110 metres

### SIZES

XS (S) M (L) XL (XXL)

**NOTE!** See MEASUREMENTS to find your size

### MEASUREMENTS

Upper body 99 (104) 111 (115) 118 (120) cm

Full length mid-front approx. 62 (64) 66 (68) 69 (70) cm

Sleeves 45 (47) 49 (51) 52 (53) 49 cm

### YARN REQUIREMENTS

Colour 1 12 (12) 13 (13) 14 (14) balls

Colour 2 2 balls in all sizes

### COLOURS

Colour 1 Olive 110

Colour 2 Off-White 113

### SUGGESTED NEEDLES

4.5 and 5 mm short and long circular needles and DPNs

### GAUGE

17 sts with stocking st on 5 mm needles = 10 cm

**Check your gauge by working a swatch.**

**Count the number of sts per 10 cm. If you have more sts than suggested, change to a larger needle size. If you have fewer sts change to a smaller needle size.**

### FIND YOUR SIZE

1. Measure a knitted garment that fits you.
2. Compare your measurements with those in the pattern.
3. Select your size based on the upper body measurements.
4. Body and sleeves may be worked longer or shorter as needed.

### ABBREVIATIONS

k = knit, p = purl, st = stitch, R = round/row,  
DPN = double pointed needles, Y/O = yarn over,  
K2tog = knit 2 together, m = marker, PM = place marker,  
tbl = through back loop, m1l = make one left,  
m1r = make one right, RS/WS = right/wrong side



### BODY

Cast on 168 (176) 188 (196) 200 (204) sts with colour 1 on 4.5 mm circular needles. PM in each side with 84 (88) 94 (98) 100 (102) sts for both the front and back pieces. Work rib in the round (K1, P1) for 4 (4) 4 (5) 5 (5) cm. Change to 5 mm needles. Work stocking st until the piece measures 41 (43) 44 (45) 46 (47) cm. Cast off 5 sts on each side of each m = 74 (78) 84 (88) 90 (92) 87 sts on the front and back pieces. Set aside and work the sleeves.

#### © House of Yarn AS

The copying and publication of materials and patterns, or their use for commercial purposes, is not allowed without prior agreement with House of Yarn AS.





### SLEEVES

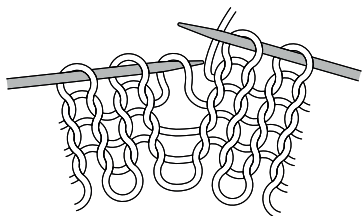
Cast on 38 (40) 44 (46) 48 (50) sts with colour 1 on 4.5 mm DPNs. Work rib in the round (K1, P1) for 4 (4) 4 (5) 5 (5) cm. Change to 5 mm needles. PM around the first st = underarm m. Continue working stocking st until the sleeve measures 5 (5) 5 (6) 6 (6) cm. Increase by **m1l** after the m st **and m1r** before the m st.

Repeat the increases every 3.5 (3.5) 4 (4) 4 (4) cm, 11 (12) 11 (11) 11 (11) times = 60 (64) 66 (68) 70 (72) sts. Work until the piece measures 45 (47) 49 (51) 52 (53) cm. Cast off 10 underarm sts = 50 (54) 56 (58) 60 (62) sts.

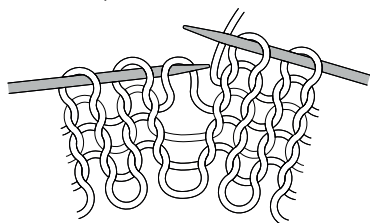
Set aside and work the other sleeve.

### M1R AND M1L

**M1l:** Pick up the strand between 2 sts, place it on left needle as shown in picture, work through the back loop.



**M1r:** Pick up strand between 2 sts, place it on left needle as shown in picture, work the front loop.



### YOKE

Place all pieces on 5 mm circular needles: Left sleeve, front piece, right sleeve, and back piece = 248 (264) 280 (292) 300 (308) sts.

R begins at the back of the left shoulder. Work 6 (6) 7 (7) 8 (8) cm of stocking st with colour 1, **while at the same time** on R 2 decreasing 20 (24) 28 (28) 24 (20) sts evenly spaced = 228 (240) 252 (264) 276 (288) sts. Work colourwork and decreases according to diagram. Finish the piece with colour 1.

Work 2 cm stocking st. Decrease 46 (38) 38 (46) 46 (50) sts evenly spaced on the next R = 110 (124) 136 (140) 152 (160) sts.

Work 2 cm of stocking st and decrease 36 (50) 62 (62) 74 (78) sts evenly spaced on the next R = 74 (74) 74 (78) 78 (82) sts.

Work stocking st for 1 R.

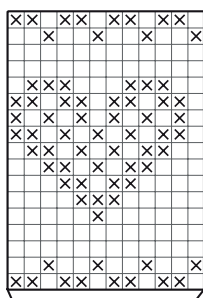
### NECKLINE

Change to 4.5 mm needles and work 3 cm rib in the round (K1, P1). Cast off loosely with K and P sts.

### ASSEMBLY

Join the underarm seams.

### DIAGRAM



← Decrease 36 (42) 54 (54) 54 (54) sts evenly spaced = 156 (162) 174 (186) 198 (210) sts

← Decrease 36 (36) 24 (24) 24 (24) sts evenly spaced = 192 (204) 228 (240) 252 (264) sts

Repeat

□ Colour 1  
 ⊗ Colour 2

Do you need inspiration for your next knitting project? Check out the website [houseofyarn.no](http://houseofyarn.no)