



DALE<sup>®</sup>  
GARN

HOUSE of YARN

# ODER JUMPER

DG 465-09 | KIDSILK ERLE



DG 465-09

## ODER JUMPER

### DESIGN

Ane Kydland Thomassen

### YARN

KIDSILK ERLE 56 % mohair, 26 % silk, 18 % wool,  
50 grams = approx. 325 metres

### SIZES

S (M) L (XL) XXL

*This garment is designed to be oversized. Consult the garment measurements below to choose your size.*

### MEASUREMENTS

Upper body approx. 102 (111) 118 (129) 135 cm  
Full length mid-front approx. 53 (54) 55 (57) 58 cm  
Sleeves approx. 45 cm or your preferred length

### YARN REQUIREMENTS

Colour 1	3 (3) 4 (4) 4 balls
Colour 2	1 ball in all sizes
Colour 3	1 ball in all sizes
Colour 4	1 ball in all sizes

### COLOURS

Colour 1	Unbleached White 0020
Colour 2	Apricot 9036
Colour 3	Beige Rose 9045
Colour 4	Pale Mint 9031

### SUGGESTED NEEDLES

2.5 mm and 3.5 mm long and short circular needles and DPNs

### GAUGE

22 sts x 26 R stocking st and colourwork on 3.5 mm needles = 10 x 10 cm

**Check your gauge by working a swatch. Count the number of sts per 10 cm. If you have more sts than suggested, change to a larger needle size. If you have fewer sts change to a smaller needle size.**

### FIND YOUR SIZE

1. Measure a knitted garment that fits you.
2. Compare your measurements with those in the pattern.
3. Select a size based on the upper body measurements.
4. Body and sleeves may be worked longer or shorter as needed.

### ABBREVIATIONS

k = knit, p = purl, st = stitch, R = round/row, DPN = double pointed needles, m = marker, PM = place marker, tbl = through back loop, RS/WS = right/wrong side



### BODY

Cast on 224 (244) 260 (284) 296 sts with colour 1 on 3 mm circular needles.

Work a twisted rib (K1 tbl, P1) in the round for 6 cm.

PM around 1 st in each side, with 111 (121) 129 (141) 147 sts for the front and back pieces.

Change to 3.5 mm circular needles and work stocking st until piece measures 30 cm. On the last R cast off 25 sts on each side for the armholes (= m st + 12 sts on each side) = 87 (97) 105 (117) 123 sts on the front and back pieces.

Leave sts on the needle.

#### © House of Yarn AS

The copying and publication of materials and patterns, or their use for commercial purposes, is not allowed without prior agreement with House of Yarn AS.

Photo: House of Yarn





## SLEEVES

Cast on 54 (56) 58 (60) 62 sts with colour 1 on 3 mm DPNs. Work 6 cm twisted rib (K1 tbl, P1) in the round. Change to 3.5 mm needles. PM around the 1st st (= underarm m st). Continue with stocking st. **At the same time** on R 1, increase 10 (10) 12 (12) 14 sts evenly spaced = 64 (66) 70 (72) 76 sts. When the sleeve measures 8 cm increase 1 st on each side of the m st. Repeat the increases every 3 (2.5) 2.5 (2.5) 2.5 cm a total of 12 (13) 13 (14) 14 times = 88 (92) 96 (100) 104 sts. Work until the sleeve measures 45 cm or to desired length. On the last R cast off 25 underarm sts (= m st + 12 sts on each side) = 63 (67) 71 (75) 79 sts. Leave sts on the needle and work the other sleeve.

## YOKE

Place left sleeve, front piece, right sleeve, and back piece on 3.5 mm circular needles = 300 (328) 352 (384) 404 sts. PM around 2 sts in each join (= 1 st from sleeve and 1 st from either front or back piece) = 4 m. Work 1 R stocking st, then pattern according to diagram. Count outwards from the middle of each piece to determine where the diagram should begin. When you have completed the diagram, finish the piece with colour 1. **At the same time**, on R 2 after joining the pieces, decrease for raglan as follows: K2tog tbl before each m and K2tog after each m. Decrease with the colour which fits best with where you are in the pattern. M sts are always worked with colour 1. Repeat the raglan decreases every 4th R another 6 (5) 4 (2) 1 times, then every 2nd round 11 (14) 17 (21) 24 times.

**At the same time**, on the last R, place the middle 19 (23) 27 (29) 31 sts in front on a st holder for the neckline = 137 (145) 149 (163) 165 sts. Work to end of R and cut yarn. R now begins at the front by the neckline. Work flat (R 1 = WS) and continue casting off for the neckline at the beginning of each R: 3,2 sts on each side, then 1 st until the raglan decreases are finished.

## NECKLINE

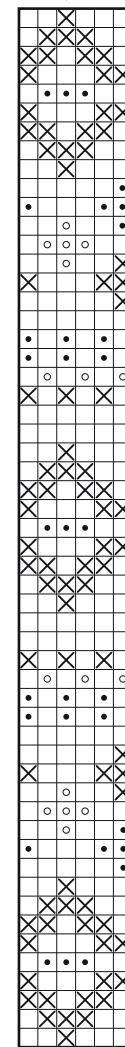
Use colour 1 and 3 mm needles. Knit up approx. 10 sts per 5 cm, including the sts from the needle/st holder. St count must be divisible by 2. Work 1 R stocking st in the round, then 7 cm twisted rib (K1 tbl, P1). Cast off loosely with K and P sts.

## ASSEMBLY

Fold the neckline double to the WS and sew down. Join underarm seams.

## DIAGRAM

Mid-front/back  
Mid-sleeve



- Colour 1
- ⊗ Colour 2
- Colour 3
- Colour 4

Do you need inspiration for your next knitting project? Check out the website [houseofyarn.no](http://houseofyarn.no)