



DU STORE
ALPAKKA[®]

HOUSE of YARN

HANDBALL JUMPER

DSA 124-06 | FAERYTALE



Du Store Alpukka – a part of **HOUSE of YARN**

DSA 124-06

HANDBALL JUMPER

DESIGN

House of Yarn

YARN

FAERYTALE 100 % finest alpaca,
50 grams = approx. 175 metres

SIZES

S (M) L (XL) XXL-XXXL

NOTE! *This garment is designed to be oversized. Consult the garment measurements below to choose your size.*

MEASUREMENTS

Upper body approx. 100 (111) 122 (133) 144 cm

Full length approx. 58 (60) 62 (65) 68 cm

Sleeves women approx. 46 cm or desired length

Sleeves men approx. 51 cm or desired length

YARN REQUIREMENTS

Colour 1	2 (2) 3 (3) 3 balls
Colour 2	1 (1) 2 (2) 2 balls
Colour 3	1 (1) 1 (2) 2 balls
Colour 4	1 (1) 1 (2) 2 balls
Colour 5	1 (1) 1 (2) 2 balls
Colour 6	1 (1) 1 (2) 2 balls

COLOURS

Colour 1	Turquoise 808
Colour 2	Royal Blue 807
Colour 3	White 702
Colour 4	Orange 806
Colour 5	Purple 804
Colour 6	Pink 813

SUGGESTED NEEDLES

3.5 mm and 4.5 mm long and short circular needles and DPNs

GAUGE

18 sts stocking st and colourwork on 4.5 mm needles
= 10 cm

Check your gauge by working a swatch.

Count the number of sts per 10 cm. If you have more sts than suggested, change to a larger needle size. If you have fewer sts change to a smaller needle size.

FIND YOUR SIZE

1. Measure a knitted garment that fits you.
2. Compare your measurements with those in the pattern.
3. Select your size based on the upper body measurements.
4. Body and sleeves may be worked longer or shorter as needed.

Pattern by Ane Kydland Thomassen



ABBREVIATIONS

k = knit, p = purl, st = stitch, R = round/row(s),
DPN = double pointed needles, m = marker,
PM = place marker, RS/WS = right/wrong side

BODY

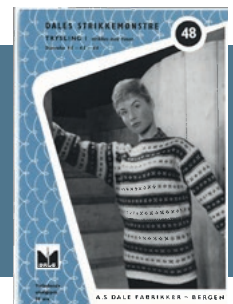
Cast on 180 (200) 220 (240) 260 sts with colour 1 on 3.5 mm needles. Work rib in the round (K2, P2) for 7 cm. PM around 1 st in each side, with 89 (99) 109 (119) 129 sts on both the front and back pieces. Change to 4.5 mm needles and work stocking st and colourwork according to the diagram. First m st = first st of diagram. Begin at the arrow for your chosen size. When the piece measures 38 (39) 40 (42) 44 cm, cast off the m sts on each side. Finish each side separately.

BACK PIECE

= 89 (99) 109 (119) 129 sts.

Continue with pattern as before, working flat.

The Handball Jumper is inspired by the Trysling Jumper from the Dale archives. The Trysling pattern was originally published in the 1950s.



© House of Yarn AS

The copying and publication of materials and patterns, or their use for commercial purposes, is not allowed without prior agreement with House of Yarn AS.

Photo: House of Yarn

When the piece measures 56 (58) 60 (63) 66 cm, cast off the middle 25 (27) 29 (31) 33 sts for the neckline. Finish each side separately. Cast off for the neck every 2nd R, 1,1 st = 30 (34) 38 (42) 46 shoulder sts. Work until the piece measures 58 (60) 62 (65) 68 cm. Cast off. Work the other side in the same way but in reverse.

FRONT PIECE

= 89 (99) 109 (119) 129 sts.

Continue with pattern as before, working flat.

When the piece measures 50 (52) 54 (57) 60 cm, cast off the middle 15 (17) 19 (21) 23 sts for the neckline. **NOTE!** You may want to adjust your neckline cast-off to be worked on the middle of 3 R of stocking st in the diagram.

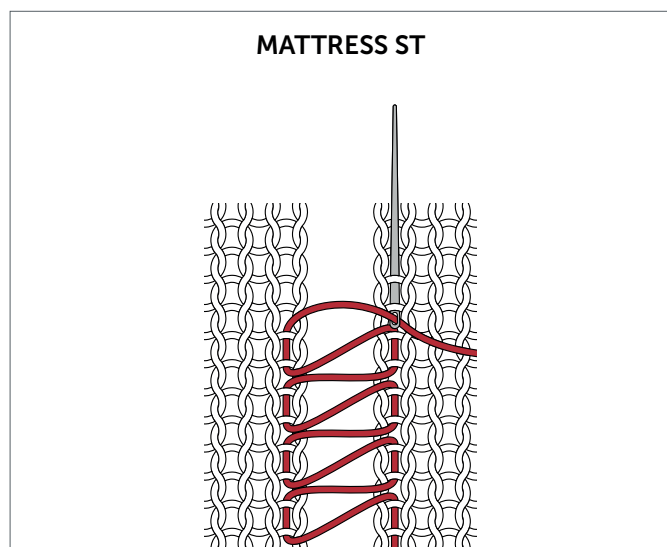
Continue with stocking st and pattern working flat and cast off for the neckline at the beginning of each R 3,2,1,1 sts on each side = 30 (34) 38 (42) 46 shoulder sts. Work until the piece measures 58 (60) 62 (65) 68 cm. Cast off. Work the other side in the same way but in reverse.

SLEEVES

Cast on 40 (44) 48 (52) 56 sts with colour 1 on 3.5 mm needles. Work rib in the round (K2, P2) for 7 cm. PM around the first st = m st. Change to 4.5 mm needles and work stocking st and colourwork according to the diagram. Count outwards from middle of sleeve to determine where the diagram should begin. The m st is always worked with the main colour of the part of the pattern you are on. When the sleeve measures 8 cm increase 1 st on each side of the m st. Repeat the increase every 2 cm (women) / 2.5 cm (men), 16 times in total = 72 (76) 80 (82) 86 sts. The increased stitches are worked into the pattern. Work until the sleeve measures 46 cm (women) / 51 cm (men) or your preferred length. We recommend finishing with a full R of a single colour in the pattern. Cast off loosely. Work one more sleeve.

ASSEMBLY

Join the shoulder seams with mattress st. Sew in the sleeves.

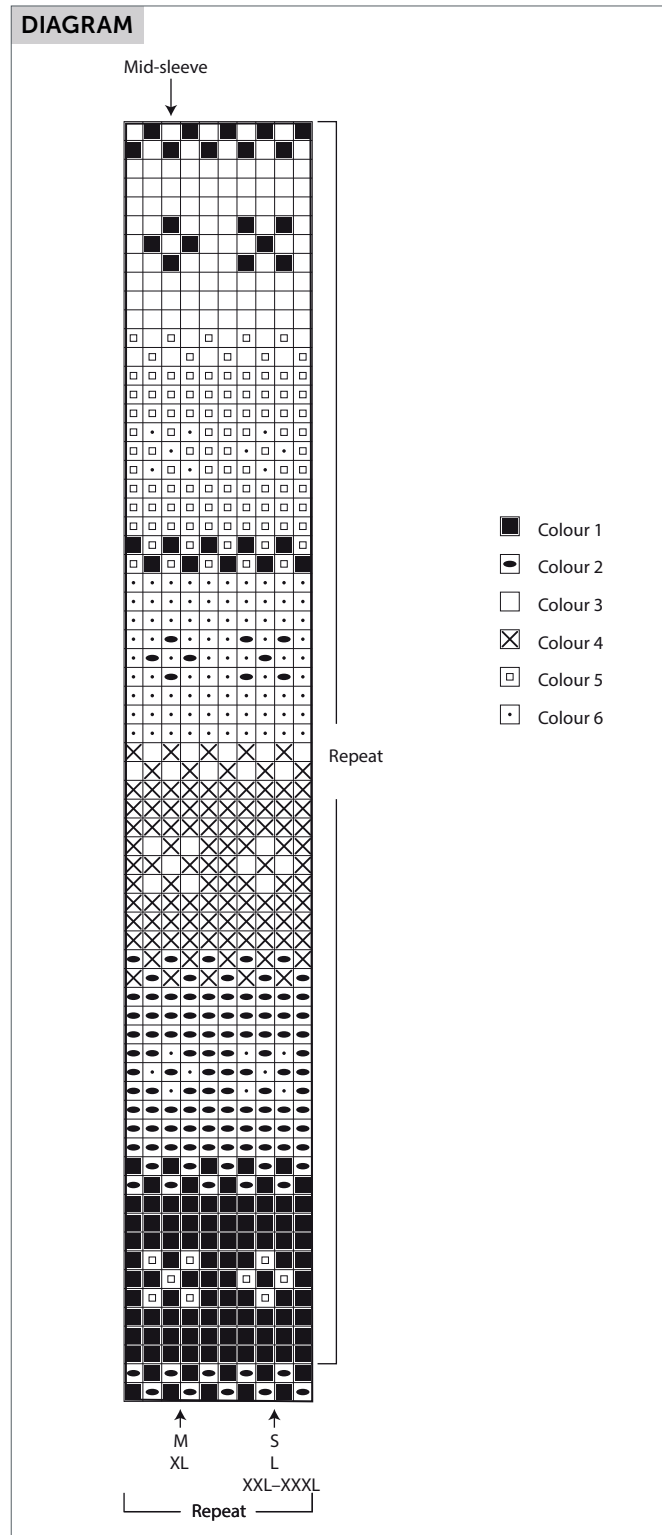


NECKLINE

Begin on one shoulder. Knit up approx. 9 sts per 5 cm with colour 1, using 3.5 mm circular needles, around the neck opening = approx. 80–96 sts. St count must be divisible by 4. Work a **round neckline**: 7 cm / **high neckline**: Work a rib in the round (K2, P2) for 24 cm. Cast off loosely.

Round neckline: Fold the edge double to the WS and sew down with loose sts.

High neckline: Fold the neckline double to the RS.



Do you need inspiration for your next knitting project? Check out the website houseofyarn.no