



SINA SUMMER TOP

DG 452-11A | ØKO BOMULL



DG 452-11A

SINA SUMMER TOP

DESIGN

House of Yarn

YARN

ØKO BOMULL 100 % organic cotton,
50 grams = approx. 110 metres

SIZES

S (M) L (XL)

NOTE! See MEASUREMENTS to find the right size

MEASUREMENTS

Upper body approx. 89 (98) 107 (116) cm

Full length approx. 52 (54) 56 (58) cm

YARN REQUIREMENTS

6 (6) 7 (8) balls

COLOUR

Off-White 302

SUGGESTED NEEDLES

4 mm long circular needles

GAUGE

22 sts stocking st and pattern on 4 mm needles = 10 cm

Check your gauge by working a swatch. Count the number of sts per 10 cm. If you have more sts than suggested, change to a larger needle size. If you have fewer sts change to a smaller needle size.

FIND YOUR SIZE

1. Measure a knitted garment that fits you.
2. Compare your measurements with those in the pattern.
3. Select your size based on the upper body measurements.
4. Body and sleeves may be worked longer or shorter as needed.

ABBREVIATIONS

k = knit, p = purl, st = stitch, R = round/row(s),
K2 tog = knit 2 together, tbl = through back loop,
m = marker, PM = place marker

© House of Yarn AS

The copying and publication of materials and patterns, or their use for commercial purposes, is not allowed without prior agreement with House of Yarn AS.



BODY

Cast on 200 (220) 240 (260) sts on 4 mm circular needles. Work in the round and P across 1 R. PM around the 1st and 101st (111th) 121st 131st sts (side m) = 99 (109) 119 (129) sts on both the front and back pieces. Work in pattern according to diagram until the piece measures 33 (35) 37 (39) cm. Cast off 11 (15) 19 (23) sts (= m st and 5 (7) 9 (11) sts on each side) for both armholes = 89 (95) 101 (107) sts on the front and back pieces. Finish each piece separately.

BACK PIECE

Work flat and continue in pattern as before, **inside** 3 edge sts on each side. These edge sts are K on every R.

At the same time, on R 1, cast off the middle st = 44 (47) 50 (53) sts on each side. Finish each side separately as follows: K 2, K2tog tbl (= 3 edge sts), work until 4 sts remain, K2tog, K 2 (= 3 edge sts).

Repeat the decreases every 2nd R, 16 (17) 18 (19) times in total. Work until the piece measures 52 (54) 56 (58) cm.

Cast off. Work the other side in the same way.

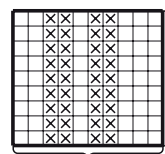
FRONT PIECE

Work in the same way as the back piece.

ASSEMBLY

Sew or graft the shoulder seams together.

DIAGRAM



Repeat

□ K on RS, P on WS
☒ P on RS, K on WS

Repeat

Do you need inspiration for your next knitting project? Check out the website houseofyarn.no