



DALE<sup>®</sup>  
GARN

HOUSE of YARN

# CHUNKY VIAS VEST

DG 472-02 | SOLÉ



Dale Garn – a part of HOUSE of YARN

DG 472-02

## CHUNKY VIAS VEST

### DESIGN

Hrönn Jónsdóttir

### YARN

SOLÉ 100 % cotton, 50 grams = approx. 88 metres

### SIZES

XXS (XS) S (M) L (XL) XXL (XXXL)

**NOTE!** See GARMENT MEASUREMENTS to find the right size

### GARMENT MEASUREMENTS

Upper body approx. 77 (83) 91 (99) 107 (117) 128 (136) cm

Full length approx. 50 (51) 52 (54) 56 (58) 60 (62) cm

### YARN REQUIREMENTS

4 (4) 4 (5) 5 (6) 6 (7) balls

### COLOUR

White/Pink 904

### SUGGESTED NEEDLES

6 mm long circular needles

Cable needle

### GAUGE

15 sts x 21 R stocking st on 6 mm needles = 10 x 10 cm

**Check your gauge by working a swatch.**

**Count the number of sts per 10 cm. If you have more sts than suggested, change to a larger needle size. If you have fewer sts change to a smaller needle size.**

### FIND YOUR SIZE

1. Measure a knitted garment that fits you.
2. Compare your measurements with those in the pattern.
3. Select your size based on the upper body measurements.
4. Body and sleeves may be worked longer or shorter as needed.

### ABBREVIATIONS

k = knit, p = purl, st = stitch, R = round/row(s),

DPN = double pointed needles, K2 tog = knit 2 together,

tbl = through back loop, RS/WS = right/wrong side,

BOR/EOR = beginning/end of row/round

#### © House of Yarn AS

The copying and publication of materials and patterns, or their use for commercial purposes, is not allowed without prior agreement with House of Yarn AS.



**NOTE!** Make sure to work any yarn changes at the side of the garment, to avoid visible yarn changes.

### DOUBLE DECREASE AT BOR

K1, K3tog

### DOUBLE DECREASE AT EOR

Work until 4 sts remain, slip 1 st K-wise 3 times, move the sts back onto your left needle and work them as K3tog tbl, K1.

### SINGLE DECREASE AT BOR

K1, K2tog.

### SINGLE DECREASE AT EOR

Work until 3 sts remain, slip 1 st K-wise 2 times, move the sts back onto your left needle and work them as K2tog tbl, K1.

### BODY

Cast on 116 (124) 136 (148) 160 (176) 192 (204) sts on 6 mm needles. P4M evenly spaced; 1 m in each side, 1 mid-front and 1 mid-back = 29 (31) 34 (37) 40 (44) 48 (51) sts between each m. Work stocking st in the round.

When the piece measures 33 (33) 33 (34) 35 (36) 37 (38) cm, work the next R as follows: \*Work until 2 sts remain before m, place 2 sts on cable needle held behind your work, K2, K sts from cable needle\*, repeat from \*-\* 3 more times. Divide piece at m and finish each side separately.

### RIGHT BACK PIECE / LEFT FRONT PIECE

= 29 (31) 34 (37) 40 (44) 48 (51) sts.

**Read the following paragraph carefully, as you will be casting off for both armholes and V-neck at the same time.**

**Armhole cast-off:** Cast off at BOR on every 2nd R (RS):  
Work a **double decrease** on every 2nd R, 3 (4) 5 (5) 6 (7) 8 (8) times in total.  
Work a **single decrease** on every 2nd R, 3 (2) 3 (3) 2 (2) 3 (3) times in total.

**Neckline decreases:** Decrease at EOR from RS as follows:  
Work a **double decrease** on every 2nd R, 2 (2) 2 (2) 3 (3) 3 (4) times in total.  
Work a **single decrease** on every 2nd R, 3 (3) 3 (4) 5 (6) 6 (8) times in total.  
Work a **single decrease** on every 4th R, 4 (5) 5 (6) 5 (6) 6 (5) times in total.

When all decreases have been worked you will have 9 (9) 9 (10) 10 (10) 11 (11) sts left on needle.  
Work without further decreases until the piece measures 17 (18) 19 (20) 21 (22) 23 (24) cm from the division. Cast off.

### LEFT BACK PIECE / RIGHT FRONT PIECE

= 29 (31) 34 (37) 40 (44) 48 (51) sts.

**Read the following paragraph carefully, as you will be casting off for both armholes and V-neck at the same time.**

**Armhole decreases:** Decrease at EOR on every 2nd R (RS):  
Work a **double decrease** on every 2nd R, 3 (4) 5 (5) 6 (7) 8 (8) times in total.  
Work a **single decrease** on every 2nd R, 3 (2) 3 (3) 2 (2) 3 (3) times in total.

**Neckline decreases:** Decrease at BOR from RS as follows:  
Work a **double decrease** on every 2nd R, 2 (2) 2 (2) 3 (3) 3 (4) times in total.  
Work a **single decrease** on every 2nd R, 3 (3) 3 (4) 5 (6) 6 (8) times in total.  
Work a **single decrease** on every 4th R, 4 (5) 5 (6) 5 (6) 6 (5) times in total.

When all decreases have been worked you will have 9 (9) 9 (10) 10 (10) 11 (11) sts left on needle.  
Work without further decreases until the piece measures 17 (18) 19 (20) 21 (22) 23 (24) cm from the division. Cast off.

### LEFT FRONT PIECE

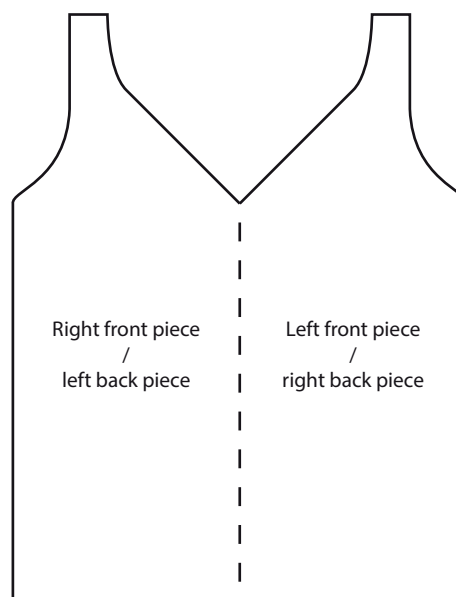
Work in the same way as right back piece.

### ASSEMBLY

Graft the shoulder seams together.



### DIAGRAM



Do you need inspiration for your next knitting project? Check out the website [houseofyarn.no](http://houseofyarn.no)