



LAURINDA HAT & FINGERLESS MITTS

DSA 64-17 | ALPAKKA TWEED



DSA 64-17

LAURINDA HAT & FINGERLESS MITTS

DESIGN

DM Collection

YARN

ALPAKKA TWEED 50 % alpaca, 30 % merino wool,
20 % Donegal, 50 grams = approx. 80 metres

SIZES

One Size

MEASUREMENTS

Hat

Circumference approx. 57 cm

Fingerless mitts

Length approx. 31 cm

YARN REQUIREMENTS

Hat

2 balls

1 ball

Fingerless mitts

2 balls

COLOURS

Colour 1 Beige 107

Colour 2 Brown 112

SUGGESTED NEEDLES

4.5 mm and 5 mm long circular needles and DPNs

Extra needle

GAUGE

15 sts English Rib on 5 mm needles = 10 cm

18 sts stocking st on 5 mm needles = 10 cm

24 sts in pattern according to diagram A on 5 mm needles
= 9 cm

Check your gauge by working a swatch.

Count the number of sts per 10 cm. If you have more sts than suggested, change to a larger needle size. If you have fewer sts change to a smaller needle size.

ABBREVIATIONS

k = knit, p = purl, st = stitch, R = round/row,

DPN = double pointed needles, k2tog = knit 2 together,

Y/O = yarn over, m = marker, PM = place marker,

tbl = through back loop, m1l = make one left,

m1r = make one right, RS/WS = right/wrong side

© House of Yarn AS

The copying and publication of materials and patterns, or their use for commercial purposes, is not allowed without prior agreement with House of Yarn AS.



ENGLISH RIB (in two colours)

NOTE! Work alternately 2 R from RS and 2 R from WS.

Edge sts are always K.

R 1: (= RS) Colour 1: K 1 edge st, *1 Y/O + slip 1 st purlwise, K tog 1 Y/O + 1 st*, repeat from *-* , finish with 1 Y/O + slip 1 st purlwise, K 1 edge st.

R 2: (= RS) Colour 2: K 1 edge-st, *P tog 1 Y/O + 1 st, 1 Y/O + slip 1 st purlwise*, repeat from *-* , finish with P tog 1 Y/O + 1 st, K 1 edge-st.

R 3: (= WS) Colour 1: K 1 edge st, *1 Y/O + slip 1 st purlwise, P tog 1 Y/O + 1 st*, repeat from *-* , finish with 1 Y/O + slip 1 st purlwise.

R 4: (= WS) Colour 2: K 1 edge-st, *K tog 1 Y/O + 1 st, 1 Y/O + slip 1 st purlwise*, repeat from *-* , finish with K tog 1 Y/O + 1 st, K 1 edge-st.

Repeat R 1-4.

HAT

Cast on 87 sts with colour 1 on 4.5 mm circular needles.

Work rib flat as follows:

R 1: K1 (= edge st), *P1, K1*, repeat from *-* , finish with P1, K1 (= edge st).

R 2: K1 (= edge st), *K1, P1*, repeat from *-* , finish with K1, K1 edge st. Repeat R 1 + 2.

Work until the rib measures approx. 6 cm and the last R was from the RS.

Work next R (WS) as follows: K1 (= edge st), *K1, Y/O + slip 1 st purlwise*, repeat from *-* and finish with K1, K1 edge st. Change to 5 mm needles and work **English rib** until the piece measures approx. 20 cm, finish with R 4 in English rib pattern.

On the next R (RS) work **English rib** while also decreasing as follows:

R 1: (= RS) Colour 1: K 1 edge st, Y/O + slip 1 st purlwise, *slip 1 st (= Y/O + 1 st) knitwise, K2 tog (= 1 st + Y/O + 1 st), pass the slipped st over, work 10 sts **English rib***, repeat from *-* and finish with 1 edge st = 75 sts.

R 2-4: **English rib** as before.

R 5: (= RS) Colour 1: K 1 edge st, Y/O + slip 1 st purlwise, *slip 1 st (= Y/O + 1 st) knitwise, K2 tog (= 1 st + Y/O + 1 st), pass the slipped st over, work 8 sts **English rib***, repeat from *-* and finish with 1 edge st = 63 sts.

R 6-8: **English rib** as before.

R 9: (= RS) Colour 1: K 1 edge st, Y/O + slip 1 st purlwise, *slip 1 st (= Y/O + 1 st) knitwise, K2 tog (= 1 st + Y/O + 1 st), pass the slipped st over, work 6 sts **English rib***, repeat from

- and finish with 1 edge st = 51 sts. Repeat the decreases on every 4th R until there are 15 sts left. Cut yarn and pull through the remaining sts, tightening gently.

ASSEMBLY

Sew the hat together. Make a pom-pom with colour 1, approx. 5-6 cm diameter, and attach it to the top of the hat.

FINGERLESS MITTS

Cast on 38 sts with colour 1 on 4.5 mm DPNs. Work 6 cm rib in the round with K1, P1. Change to 5 mm DPNs. Continue as follows: 19 sts stocking st, 18 sts according to diagram **A**, 1 st in stocking st. Note that on R 2 the st count on diagram **A** increases to 24. Work until the piece measures 20 cm. Work 5 cm flat = thumb hole.

Make sure to work the cables from the RS when working flat. Work in the round again until the piece measures approx. 4 cm after the thumb hole, and the last R is marked as either "a" or "b" in the diagram.

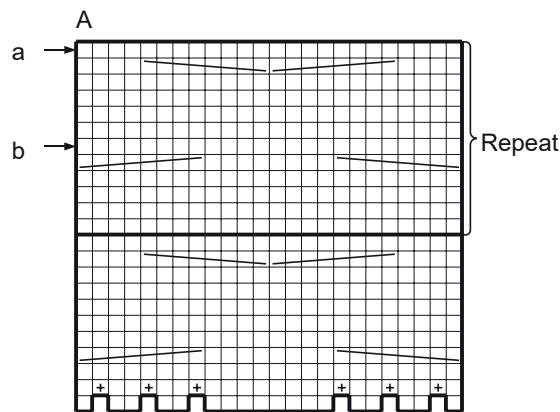
K across 1 R while at the same time increasing 6 sts evenly spaced across the 24 cable sts = 38 sts. Change to 4.5 mm DPNs. Work rib in the round (K1, P1) for 4 R. Cast off with K and P sts.

Work another mitt in the same way but in reverse.

EDGE AROUND THUMB HOLES

Using 4.5 mm DPNs, pick up 18 sts around the thumb hole. Working in the round, K across 2 R, then work rib (K1, P1) for 3 R. Cast off with K and P sts.

DIAGRAM



□ K on RS, P on WS

⊕ Increase 1 st by lifting the strand between 2 sts and K tbl

Place 4 st on cable needle held in front of the piece, K 4, K sts from cable needle

Place 4 st on cable needle held behind the piece, K 4, K sts from cable needle

Do you need inspiration for your next knitting project? Check out the website houseofyarn.no