



DALE[®]
GARN

HOUSE of YARN

SVALBARD HAT & MITTENS

DG 418-03 | ALPAKKA FORTE



Dale Garn – a part of HOUSE of YARN

DG 418-03

SVALBARD HAT & MITTENS

DESIGN

Kari Haugen

YARN

ALPAKKA FORTE 80 % alpaca, 20 % nylon,
50 grams = approx. 133 metres

SIZE

One Size

YARN REQUIREMENTS

Hat

Colour 1	1 ball
Colour 2	1 ball
Colour 3	1 ball

Mittens

Colour 1	1 ball
Colour 2	1 ball
Colour 3	1 ball
Colour 4	1 ball

COLOUR

Colour 1	Mottled Indigo 708
Colour 2	Off-White 711
Colour 3	Mottled Light Denim 714
Colour 4	Mottled Brown 725

SUGGESTED NEEDLES

3 and 3.5 mm short circular needles and DPNs

GAUGE

25 sts with stocking st on 3.5 mm needles = 10 cm

Check your gauge by working a swatch.

Count the number of sts per 10 cm. If you have more sts than suggested, change to a larger needle size. If you have fewer sts change to a smaller needle size.

ABBREVIATIONS

k = knit, p = purl, st = stitch, R = round/row,
DPN = double pointed needles, k2tog = knit 2 together,
m = marker, PM = place marker, tbl = through back loop,
m1l = make one left, m1r = make one right,
RS/WS = right/wrong side

For the jumper pattern see DG 418-01 at houseofyarn.no

© House of Yarn AS

The copying and publication of materials and patterns, or their use for commercial purposes, is not allowed without prior agreement with House of Yarn AS.





HAT

Cast on 136 sts with colour 3 on 3 mm circular needles. Work rib in the round (K1, P1) for 8 cm. K across 1 R, **while at the same time** increasing 8 sts evenly spaced = 144 sts. Change to 3.5 mm needles and work pattern according to diagram **A**.

Change to colour 1. Work stocking st in the round and decrease on R2 as follows: *K2tog, K 16*, repeat from *-* to end of R = 136 sts. Work 1 R stocking st.

Work next R as follows: *K2tog, K 15*, repeat from *-* to end of R = 128 sts. Work 1 R stocking st.

Decrease on next R as follows: *K2tog, K 14*, repeat from *-* to end of R = 120 sts.

Decrease like this every 2nd R until 8 sts remain.

Cut yarn. Pull yarn through the remaining sts.

If you want, you can make a pom-pom and sew it onto the top of the hat.

MITTENS

Cast on 56 sts with colour 3 on 3 mm DPNs.

Work 4 R of stocking st for lining. Work an eyelet R as follows: *K2 tog, 1 Y/O*, repeat from *-* to end of round.

Change to 3.5 mm needles and work pattern according to diagram **B**.

At the lines indicating thumbs in the diagram, work in a strand of scrap yarn across 7 sts on the right or left hand side as follows: Work the 7 sts with the scrap yarn, move the sts back onto your left needle and work them again according to diagram.

Continue with colourwork and decreases according to diagram.

Cut the yarn and pull it through the remaining sts.

Work the other mitten in the same way but with the scrap yarn for the thumb on the opposite side.

Thumb

Remove the scrap yarn and place the sts on a 3 mm DPN. Pick up 2 sts in each side = 18 sts.

Work stocking st in the round with colour 3 until the thumb measures 4.5 cm. PM around 1 st in each side, with 8 sts between the m.

Decrease on next R as follows: K2 tog before each m, and K2 tog tbl after each m. K 1 R.

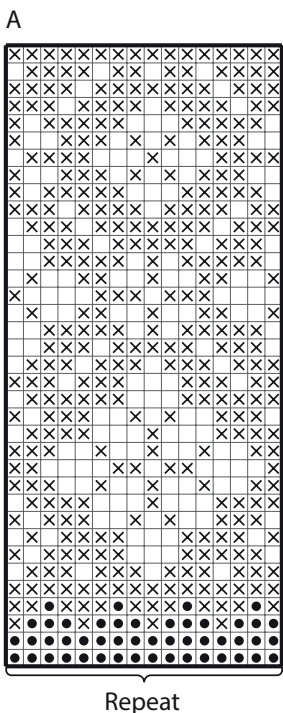
Repeat the decreases until 6 sts remain.

Cut yarn. Pull yarn through the remaining sts.

ASSEMBLY

Fold the lining to the WS and sew down.

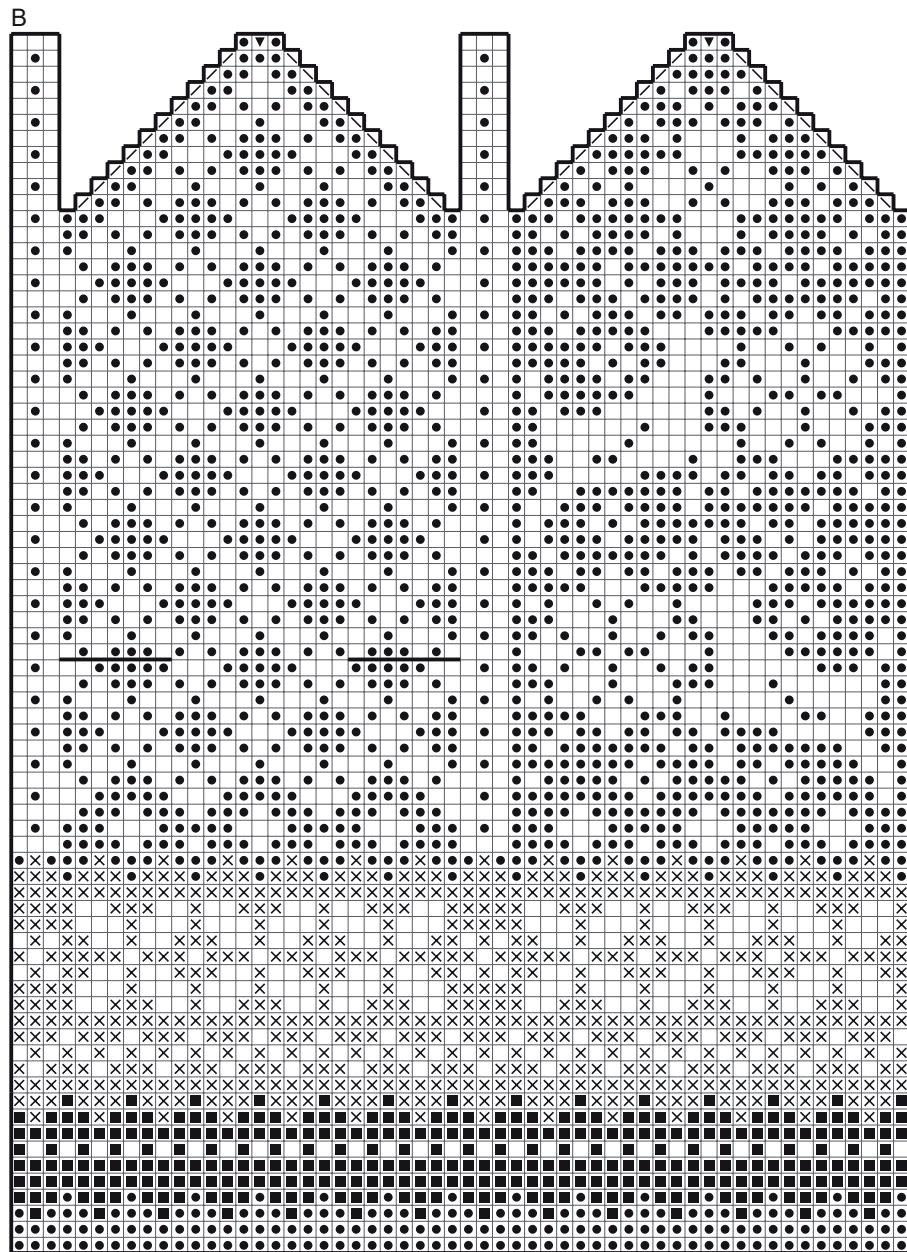
DIAGRAM HAT



- ☒ Colour 1
- ☐ Colour 2
- Colour 3

- ☑ K2 tog
- ☒ K2 tog tbl
- ▼ Slip 1 st, K2 tog, pass slipped st over

DIAGRAM



- ⊗ Colour 1
- ◻ Colour 2
- Colour 3
- ◼ Colour 4
- ◊ K2 tog
- ◊ K2 tog tbl
- ▼ Slip 1 st, K2 together, pass slipped st over

Do you need inspiration for your next knitting project? Check out the website houseofyarn.no