



MEADOWFLOWER DRESS & BEANIE

DG 411-06B | LILLE LERKE



DG 411-06B

MEADOWFLOWER DRESS & BEANIE

DESIGN

Anne-Kirsti Espenes / Hrönn Jónsdóttir

YARN

LILLE LERKE 53% merino wool, 47% Egyptian cotton,
50 grams = approx. 142 metres

SIZES

Dress 0 (3) 6 (9-12) months

Beanie 0-3 (6-9) 12 months

NOTE! See GARMENT MEASUREMENTS to find the right size

GARMENT'S MEASUREMENTS

Dress

Chest size approx. 40 (42) 46 (51) cm

Full length approx. 34 (36) 40 (44) cm

YARN AMOUNTS

Dress

2 (3) 3 (4) balls

Beanie

1 ball for all sizes

COLOUR

Old pink 8123

SUGGESTED NEEDLE SIZE

Long and short circular needles 2 and 2.5 mm

Double pointed needles size 2.5 mm

ACCESSORIES

4 buttons

KNITTING TENSION

28 sts with stocking st and 2.5 mm needles = 10 cm

33 sts with rib and 2 mm needles = 10 cm

Yarn alternatives: SOFT MERINO, BABY ULL

Check your knitting tension by working a swatch.

Count the number of sts per 10 cm; if you have more sts than suggested change to a larger needle size. If you have fewer sts, change to a smaller needle size.

FIND THE RIGHT SIZE

1. Measure a garment that fits.
2. Compare the measurements with the pattern.
3. Choose size from the chest measurements.
4. Body can be worked longer or shorter as needed.

ABBREVIATIONS

K = knit, P = purl, st. = stitch, r = row,

DPN = double pointed needles, YO = yarn over,

M1l = Make 1 left, M1r = Make 1 right



DRESS

SKIRT

Cast on 182 (196) 210 (224) sts with 2.5 mm circular needles. Work pattern in the round according to diagram **A**. Then work stocking st until the piece measures 23 (24) 27 (29) cm. Change to 2 mm needles and decrease 50 (56) 58 (56) sts evenly spaced on the next round = 132 (140) 152 (168) sts. Insert a marker round 1 st in each side, with 66 (70) 76 (84) sts on the front and back pieces. The marker st is the first st of each section. Work 1.5 (2) 2 (3) cm rib in the round, with K1, P1. Cast off 5 (7) 9 (11) sts on each side on the next round (= marker st and 2 (3) 4 (5) sts on each side of this). The front and back pieces are finished separately.

© House of Yarn AS

The copying and publication of materials and patterns, or their use for commercial purposes, is not allowed without prior agreement with House of Yarn AS.

Photo: Wenche Hoel-Knai @photowenche, Stylist: Jan Gunnar Svenson @stylesvenson

FRONT PIECE

= 61 (63) 67 (73) sts.

Work rib as before and cast off **at the same time** for the armholes every 2nd row 2,1,1 st on each side = 53 (55) 59 (65) sts. Work until the armholes measure 4 (4) 4.5 (4.5) cm. Cast off the middle 21 (23) 25 (27) sts for the neckline.

NOTE! Cast off with K and P sts. Finish each side separately. Cast off every 2nd row for the neckline 2,1,1 st = 12 (12) 13 (15) sts. Work until the armhole measures 8 (8) 9 (9.5) cm. Work a buttonhole inside 1 (1) 1 (2) sts on each side (= 2 buttonholes on each shoulder) K2 together, 1 YO, K2 twisted together. On the next row K1, P1 or P1, K1 into the YO (depending on which fits the pattern). Work 2 rows then cast off with K and P sts.

BACK PIECE

= 61 (63) 67 (73) sts.

Cast off for the armholes as on the front piece. Work until the armhole measures 6 (6) 6.5 (6.5) cm. Cast off the middle 23 (25) 27 (29) sts for the neck. Finish each side separately. Then cast off every 2nd row for the neck 2, 1 sts = 12 (12) 13 (15) sts. Work until the back piece is the same length as the front piece. Cast off with K and P sts.

NECKLINE FRONT PIECE

Knit up approx. 40 (42) 47 (52) sts from the right side with 2 mm circular needles, along the neckline. K 2 rows. Cast off with K sts from wrong side.

BACK PIECE EDGE

Knit up approx. 24 (26) 30 (34) sts from the right side with 2 mm circular needles. K 2 rows. Cast off with K sts from wrong side.

SLEEVE EDGES

Begin at the top of the armhole and knit up approx. 56 (58) 64 (70) sts from the right side with 2 mm circular needles. K 2 rows. Cast off with K sts from wrong side. Sew on the buttons.

BEANIE

Cast on 116 (122) 132 sts with 2 mm short circular needles. Work 7 (9) 9 rounds of garter st (= alternately K 1 round and P 1 round). Change to 2.5 mm needles and work a row of holes as follows: *K2 together, 1 YO*, repeat from *-* to end of round. Work 1 round stocking st.

Increase and decrease as follows on the next round: Work *K1, M1L, K18 (19) 20, slip 2 sts knitwise together, K1, pass slipped sts over, K17 (18) 20, **M1r**, K1, **M1L**, K15 (16) 18, 1 yarn over, K2 together, slip 2 sts knitwise together, K1, pass slipped sts over, slip 1 st knitwise, K1, pass slipped st over, 1 yarn

over, K15 (16) 18, **M1r**, K1, **M1L**, K17 (18) 20, slip 2 sts knitwise together, K1, pass slipped st over, K18 (19) 20, **M1L**. Work 1 round stocking st.* Repeat from *-* 7 (8) 9 twice more.

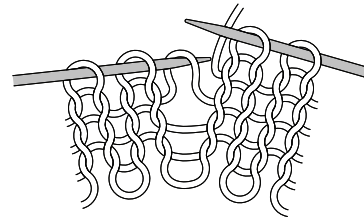
Decrease as follows: K19 (20) 21, slip 2 sts knitwise together, K1, pass slipped sts over, K33 (35) 39, 1 yarn over, K2 together, slip 2 sts knitwise together, K1, pass slipped sts over, slip 1 st knitwise K1, pass slipped st over, 1 yarn over, K33 (35) 39, slip 2 sts knitwise together, K1, pass slipped sts over, K18 (19) 20. Work 1 round stocking st. Decrease like this every 2nd round (with 2 sts less between the decreases) until there are 8 (8) 12 sts left. Cut the yarn and pull it through the remaining sts.

I-CORD

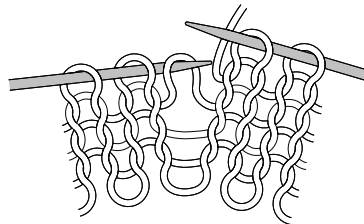
Cast on 2 sts with 2 mm double pointed needles (DPNs) and work in the round as follows: K2, * push the sts to the right end of the needle without turning, tighten the yarn at the back and K2 *. Work from *-* until the cord measures 12 cm. Sew the I-cord onto the first tip on the round (= left ear). Work another I-cord in the same way and sew it onto the last tip on the round (= right ear).

M1R AND M1L

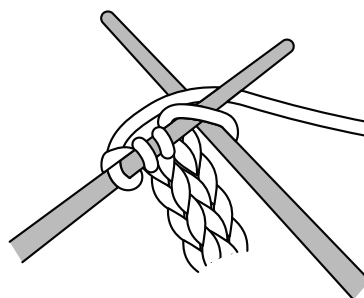
M1r: Pick up the strand between 2 sts, place it on left needle as shown in picture, work through the back loop.



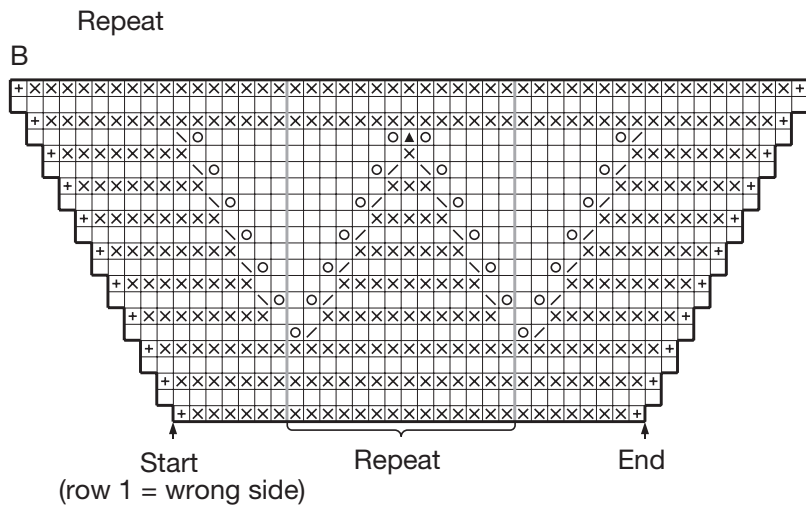
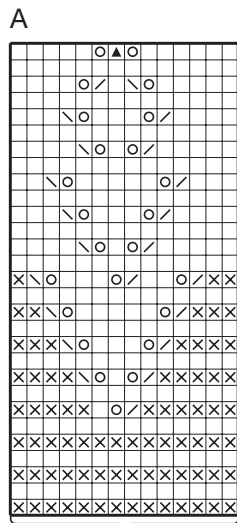
M1l: Pick up strand between 2 sts, place it on left needle as shown in picture, work the front loop.



I-CORD



DIAGRAM



- K on right side, P on wrong side
- P on right side, K on wrong side
- K2 together
- Yarn over
- Slip 1 st knitwise, K1, pass slipped st over
- Slip 2 sts knitwise together, K1, pass slipped sts over
- + K through back and front loop of st (= increase)

Do you need inspiration for your next knitting project? Check out the website houseofyarn.no