



DALE[®]
GARN

HOUSE of YARN

PRIDELENDER CHILDREN

DG 455-04 | SOFT MERINO



Dale Garn - a part of HOUSE of YARN

PRIDELENDER CHILDREN

DESIGN

Hrönn Jónsdóttir

YARN

SOFT MERINO 100% extra fine merino wool,
50 grams = approx. 187 metres

Alternatively yarn: BABY ULL

SIZES

2 (4) 6 (8) 10 (12)

NOTE! See GARMENT MEASUREMENTS and find the right size

GARMENT MEASUREMENTS

Chest size approx. 67 (71) 76 (80) 84 (89) cm

Full length approx. 36 (40) 44 (48) 52 (56) cm

Sleeve-length approx. 25 (28) 32 (36) 38 (41) cm, or desired length

YARN AMOUNTS

Colour 1: 3 (4) 5 (5) 6 (7) balls

Colour 2: 1 ball in all sizes

Colour 3: 1 ball in all sizes

Colour 4: 1 ball in all sizes

Colour 5: 1 ball in all sizes

Colour 6: 1 ball in all sizes

Colour 7: 1 ball in all sizes

Colour 8: 1 ball in all sizes

COLOURS

Colour 1: White 3001

Colour 2: Yellow 3029

Colour 3: Bright green 3030

Colour 4: Clear Blue 3022

Colour 5: Light lavender 3026

Colour 6: Pink 3028

Colour 7: Red 3021

Colour 8: Orange 3033

SUGGESTED NEEDLE SIZE

Long and short circular needles and DPN sizes
2.5 mm and 3.5 mm

KNITTING TENSION

27 sts x 34 rounds stocking st and pattern with needle size
3.5 mm = 10 x 10 cm

Check your knitting tension by working a swatch.

Count the number of sts per 10cm; if you have more sts than suggested change to a larger needle size. If you have less sts, change to a smaller needle size.



FIND THE RIGHT SIZE

1. Measure a garment that fits.
2. Compare the measurements with the pattern.
3. Choose size from the width of the body.
4. Length of body and sleeves; you can work them longer or shorter if you wish.

ABBREVIATIONS

K = knit, P = purl, st. = stitch, r = row

We recommend that you fasten strands as you work through the project.

Stripe pattern A: 2 rounds with colour 7, 5 rounds with colour 1, 3 rounds with colour 6, 5 rounds with colour 1.

Stripe pattern B: 2 rounds with colour 8, 5 rounds with colour 1, 3 rounds with colour 2, 5 rounds with colour 1.

Stripe pattern C: 2 rounds with colour 4, 5 rounds with colour 1, 3 rounds with colour 5, 5 rounds with colour 1.

Stripe pattern D: 3 rounds with each colour in the following order: 2-8-7-6-5-4, then 12 rounds with colour 1.

Work the sleeves first.

© House of Yarn AS

The copying and publication of materials and patterns, or their use for commercial purposes, is not allowed without prior agreement with House of Yarn AS.

SLEEVES

Cast on 38 (40) 42 (44) 46 (48) sts with colour 7 (right sleeve) / 8 (left sleeve) with needle size 2.5 mm. Work rib and **stripe-pattern A** (right sleeve) / **B** (left sleeve) in the round with K1 twisted, P1.

Change to needle size 3.5 mm and work 1 round with colour 1, **at the same time** increase 10 (8) 12 (10) 14 (12) sts evenly spaced = 48 (48) 54 (54) 60 (60) sts. Insert a marker around the first st (= marker-st which is always worked with colour 1). Work pattern according to diagram. Count out from the middle of the sleeve where the diagram should begin. When the sleeve measures 6 cm, increase 1 st on each side of the marker-st. Repeat this increases every 2 (1.5) 2 (2) 2.5 (2) cm a total of 9 (12) 12 (15) 12 (15) times = 66 (72) 78 (84) 84 (90) sts. **NOTE!** The increased sts are worked into the pattern.

Work until the sleeve measures 25 (28) 32 (36) 38 (41) cm or to desired length. **At the same time**, on the last round cast off 12 sts under the sleeve (= marker-st + 5 sts on each side) = 54 (60) 66 (72) 72 (78) sts.

BODY

Cast on 180 (192) 204 (216) 228 (240) sts with colour 4 and circular needle size 2.5 mm. Work rib and **stripe pattern C** in the round with K1 twisted, P1. Insert a marker round 1 st in each side, with 89 (95) 101 (107) 113 (119) sts on both the front and back pieces. Change to needle size 3.5 mm. **Measure 18.5 (22.5) 24.5 (27.5) 30.5 (33.5) cm from top of sleeve and down in knitting direction. Start on the corresponding row in the diagram to get the correct length on the body.** Continue with stocking st and pattern according to the diagram.

NOTE! Begin with the marker-st, at the arrow for your chosen size on both sides (= the pattern will not fit over the side markers).

When the piece measures 22 (26) 28 (31) 34 (37) cm (finish with the same round as on the sleeves), cast off 12 sts for the armholes on each side (= marker-st+ 5 sts before and 6 sts after marker-st) = 78 (84) 90 (96) 102 (108) stitches on front and back piece.

YOKE

Place left sleeve, front piece, right sleeve and back piece on needle size 3.5 mm = 264 (288) 312 (336) 348 (372) sts. Place a marker round the first and last sts on both the front and back pieces (= 4 marker-sts which are worked in colour 1). Continue with pattern according to diagram on each piece. On round 2, decrease for raglan by K2 twisted together before each marker-st and K2 together after each marker-st. Decrease with the colour which best fits the pattern. Repeat the raglan-decreases every 2nd round a total of 17 (18) 21 (22) 23 (24) times.

At the same time, on the last round, place 24 (24) 26 (26) 28 (30) sts mid-front on a st-holder for the neck.

Work to end of round. Cut the strand and move the beginning of the row to before the cast-off sts mid-front (next row = wrong side).

Continue back and forth with stocking st and pattern (marker-sts purled from wrong side). Decrease for raglan on each row from right side 3 (3) 3 (1) 2 (1) more times, then every row 0 (2) 2 (5) 4 (7) times. **NOTE!** From wrong side P2 twisted together before marker-sts and P2 together after marker-sts.

At the same time cast off for the neck at the beginning of each row 3,2,2 sts on each side, then 1 st until the raglan-decreases are finished on the back piece.

ASSEMBLY

Sew together under the sleeves.

NECK

K sts from yoke onto needle size 2.5 mm with colour 1.

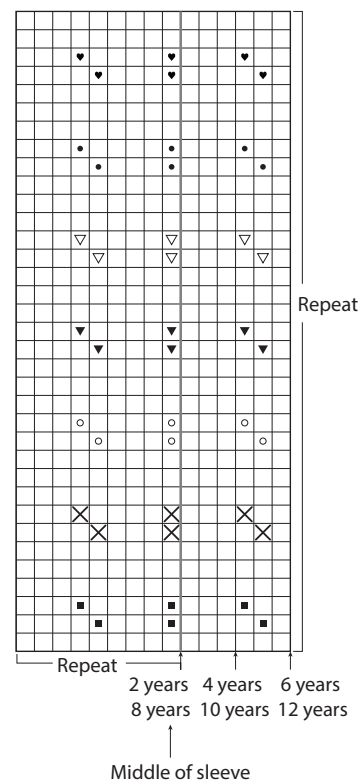
At the same, knit up approx. 13 sts pr 5 cm along the neckline.

Change to colour 3 and work 1 round stocking st, **at the same time** as the st-number is adjusted to 96 (100) 104 (108) 112 (116).

Work 2 rounds rib with K1 twisted, P1.

Continue the rib and **stripe pattern D** with K1 twisted, P1. Loosely cast off. Fold the neck double to the inside and sew down with loose stitches.

DIAGRAM



- Colour 1
- Colour 2
- ⊗ Colour 3
- Colour 4
- ▼ Colour 5
- ▽ Colour 6
- Colour 7
- ◻ Colour 8

Do you need inspiration for your next knitting project? Check out the website houseofyarn.no