



# RALLAR JUMPER & BEANIE

DG 17-01D | ALPAKKA FORTE



DG 17-01D

## RALLAR JUMPER & BEANIE

### DESIGN

Dale Garn

### YARN

ALPAKKA FORTE 80 % alpaca, 20 % nylon,  
50 grams = approx. 133 metres

### SIZES

**Jumper** 2 (4) 6 (8) 10 years

**Beanie** 2-4 (6-10) years

### GARMENT MEASUREMENTS

#### Jumper

Chest size approx. 59 (61) 66 (70) 76 cm

Full length approx. 39 (42) 46 (51) 55 cm

Sleeve length approx. 24 (27) 33 (36) 38 cm

#### Beanie

Circumference approx. 41 (46) cm

### YARN AMOUNTS

#### Jumper

Colour 1: 3 (4) 4 (5) 5 balls

Colour 2: 1 ball in all sizes

Colour 3: 1 ball in all sizes

#### Beanie

Colour 1: 1 ball in all sizes

Colour 2: 1 ball in all sizes

Colour 3: 1 ball in all sizes

### COLOURS

Colour 1: Camel

Colour 2: Warm mottled brown

Colour 3: White

### SUGGESTED NEEDLE SIZE

3 mm and 3.5 mm short and long circular needles and  
double pointed needles (DPNs)

### KNITTING TENSION

25 sts stocking st and pattern with 3.5 mm needles = 10 cm

**Check your knitting tension by working a swatch.**

**Count the number of sts per 10 cm; if you have more sts  
than suggested change to a larger needle size. If you have  
fewer sts, change to a smaller needle size.**

### FIND THE RIGHT SIZE

1. Measure a garment that fits you.
2. Compare the measurements with the pattern.
3. Choose your size from the chest measurements.
4. Body and sleeves can be worked longer or shorter as  
needed.



### ABBREVIATIONS

K = knit, P = purl, st. = stitch, r = row,

K2tog = knit 2 together, DPN = double pointed needles,

m1l/m1r = make one left/right (increase)

## JUMPER

### BODY

Cast on 148 (152) 164 (174) 190 stitches with mottled grey  
yarn and 3 mm circular needles. Work rib in the round  
(P1, K1) for 4 cm. Insert 1 marker in each side, with 74 (76) 82  
(87) 95 sts on the front and back pieces.

Change to 3.5 mm needles and work stocking st until the  
piece measures 26 (29) 32 (35) 38 cm.

Cast off 10 sts on each side for the armholes (= 5 sts on each  
side of both markers).

Lay the piece to one side and work the sleeves.

### TIPS!

Be especially mindful of the knitting tension when you  
are working a multi-coloured pattern! Check carefully!  
Most people need to go up a needle size when going  
from working one colour or a textured pattern to a  
multi-coloured pattern.

### © House of Yarn AS

The copying and publication of materials and patterns,  
or their use for commercial purposes, is not allowed  
without prior agreement with House of Yarn AS.

**SLEEVES**

Cast on 38 (40) 42 (42) 44 stitches with mottled grey yarn and 3 mm DPNs. Work 4 cm rib in the round, with K1, P1. Insert a marker mid-under the sleeve.

Change to 3.5 mm needles and work stocking st **at the same time** as you increase 1 st on each side of the marker every 2 (2) 2.5 (2) 2 cm a total of 8 (10) 11 (14) 15 times = 54 (60) 64 (70) 74 sts. **NOTE!** Increase by knitting 1, **m1l** at the beginning of the round **and m1r**, K1 at the end of the round.

When the piece measures 24 (27) 33 (36) 38 cm, cast off 10 sts mid-under sleeve (= 5 sts on each side of marker). Work one more sleeve in the same way.

**YOKE**

Place the left sleeve, front piece, right sleeve and back piece on 3.5 mm circular needles = 216 (232) 252 (274) 398 sts. Work 1 (2) 6 (3) 5 rounds stocking st, **at the same time** on round 1, decrease 0 (4) 0 (4) 2 sts evenly spaced = 216 (228) 252 (270) 296 sts. Work pattern according to diagram **A** = 100 (100) 108 (108) 108 sts.

**ASSEMBLY**

Change to 3 mm needles and dark grey yarn. Work 1 round and decrease 6 (4) 8 (4) 4 sts evenly spaced = 94 (96) 100 (104) 104 sts.

**NECKLINE**

Work rib in the round (K1, P1) for 7 cm. Loosely cast off with K and P. Fold the neck double to the inside and fasten with loose sts.

**BEANIE**

Cast on 102 (114) sts with mottled grey yarn and 3 mm DPNs. Work rib in the round (K1, P1) for 2 cm. Change to 3.5 mm needles and work 2 rounds of stocking st. Work pattern according to diagram **B**. Change to mottled grey yarn and work until the piece measures 15 (17) cm.

Decrease as follows on the next round: \*K2, K2 tog.\*, repeat from \*-\* to end of round = 75 (78) sts. Work 3 rounds without decreasing.

\*K1, K2 tog.\*, repeat from \*-\* to end of round = 50 (52) sts.

Work 3 rounds without decreasing.

K2 tog to end of round = 25 (26) sts.

Work 1 round without decreasing.

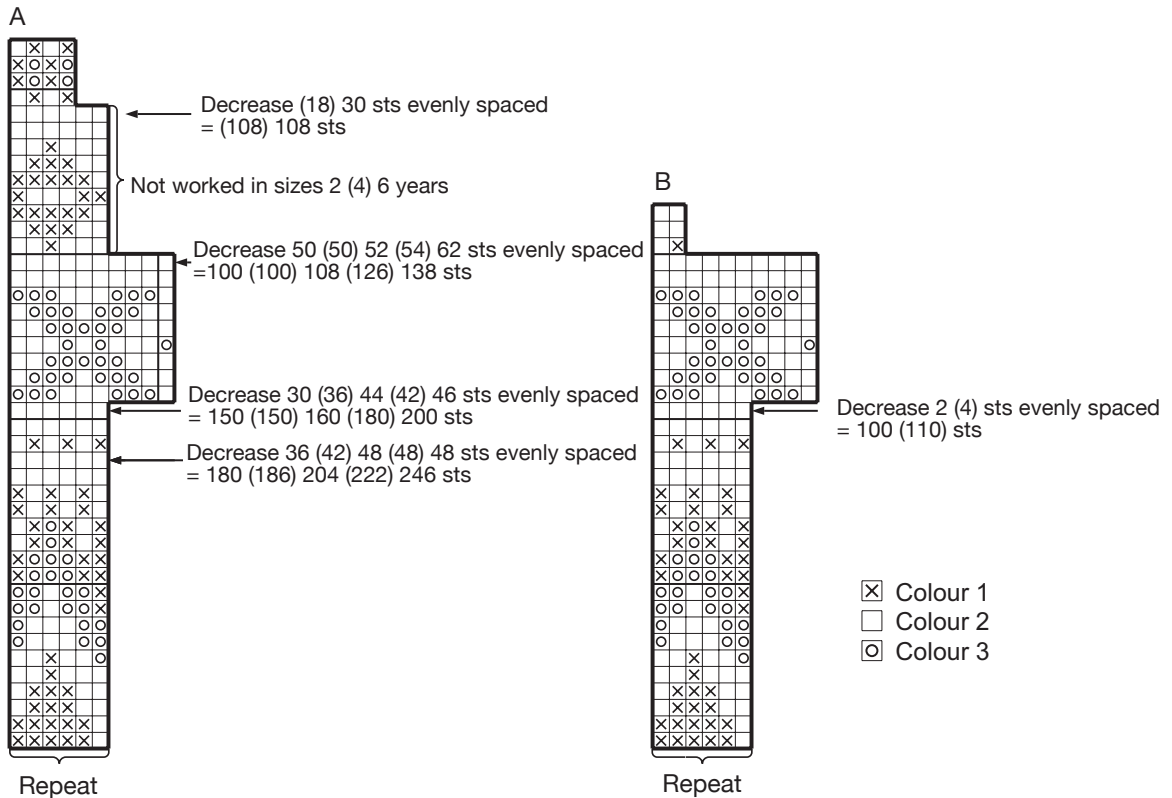
K2 tog to end of round = 13 (13) sts.

Cut the yarn and pull it through the remaining sts.

Weave in the loose end. Make a pom pom with mottled grey yarn and sew to top of beanie.



**DIAGRAM**



Do you need inspiration for your next knitting project? Check out the website [houseofyarn.no](http://houseofyarn.no)