



DALE
GARN

HOUSE of YARN

EVY CHRISTENING DRESS & ACCESSORIES

DG 411-11 | LILLE LERKE



Dale Garn - a part of HOUSE of YARN

DG 411-11

EVY CHRISTENING DRESS & ACCESSORIES

DESIGN

Hrönn Jónsdóttir

YARN

LILLE LERKE 53 % merino wool, 47 % Egyptian cotton,
50 grams = approx. 142 metres

SIZES

Dress

0 (3–6) months

Bonnet

One size

Shoes

0 (3–6) months

NOTE! See GARMENT MEASUREMENTS to find the right size

GARMENT MEASUREMENTS

Chest measurements approx. 42 (46) cm

Full length approx. 91 (99) cm

Sleeve-length approx. 16 (17) cm

YARN AMOUNTS

Dress

10 (11) balls

Bonnet

1 ball

Shoes

1 ball

COLOURS

Half-bleached white 0017

SUGGESTED NEEDLE SIZES

2.5 and 3 mm long and short circular needles and DPNs

Long circular needle size 3.5 mm

2.5 mm crochet hook

ACCESSORIES

7 buttons

Silk ribbon

KNITTING TENSION

1 pattern repeat or 26 sts on needle size 3 mm = 10 cm

Check your knitting tension by working a swatch.

Count the number of sts per 10 cm; if you have more sts than suggested, change to a larger needle size. If you have fewer sts, change to a smaller needle size.



FIND THE RIGHT SIZE

1. Measure a garment that fits.
2. Compare the measurements with the pattern.
3. Choose your size from the chest measurements.
4. Body and sleeves can be worked longer or shorter as needed.

ABBREVIATIONS

K = knit, P = purl, st. = stitch, r = row, DPN = double pointed needles, m1r = make one right, m1l = make one left

DRESS

SKIRT

Cast on 220 (240) sts with circular needle size 3.5 mm. Work in the round according to diagram **A** until the piece measures 52 (56) cm. Change to needle size 3 mm and continue working until the piece measures 79 (86) cm, finish after a complete repeat of the pattern.

Change to needle size 2.5 mm and decrease as follows on the next round: *P1, (P2 together 3 times), K2 twisted together, K3 twisted together, K2 twisted together, (P2 together 3 times)*, repeat from *-* to end of round = 110 (120) sts. P 1 round.

© House of Yarn AS

The copying and publication of materials and patterns, or their use for commercial purposes, is not allowed without prior agreement with House of Yarn AS.

On the next round work a row of holes by *K2 together, 1 yarn over*, repeat from *-* to end of round. P 1 round. Change to needle size 3 mm and continue with stocking st. **The piece is now measured from the last purled round.** Insert a marker in each side with 55 (60) sts on both the front and back pieces (beginning of round = right-hand side of garment). Work until the piece measures 1 cm. On the next round divide the piece for the split mid-back: Work 28 (30) sts, cast on 8 (9) sts, turn. P back and cast on 5 sts at end of row = 123 (134) sts. Work 4 rows stocking st. On the next row (= right side) work two buttonholes as follows: *Work until there are 11 sts left, slip 1 st, K1 and pass the slipped st over, 1 yarn over, K2 together, K2, slip 1 st, K1 and pass the slipped st over, 1 yarn over, K2 together, K1 (on the next row P1 + K1 in each yarn over). Work 11 rows stocking st.* **At the same time**, when the piece measures 3 (2) cm from the purled row after the row of holes, divide at the sides and finish the front and back pieces separately. Repeat from *-* 1 more time then work the last two buttonholes in the same way on the next row. Work 2 rows stocking st.

RIGHT BACK PIECE

= 36 (39) sts.

Cast off for the armhole every 2nd row, 2,2,1,1 (3,2,1,1) sts = 30 (32) sts. Work until the last buttonhole + 2 rows of stocking st are finished. Cast off at the beginning of each row from the wrong side, 16,2,1,1 (17,2,1,1) sts. Work 2 rows stocking st. Place the 10 (11) remaining sts on a st-holder.

LEFT BACK PIECE

= 32 (35) sts.

Cast off for the armhole every 2nd row, 2,2,1,1 (3,2,1,1) sts = 27 (28) sts. Work until the piece is the same length as the right back piece after the last buttonhole + 2 rows of stocking st. Cast off at the beginning of each row from the right side, 12,2,1,1 (13,2,1,1) sts. Work 2 rows stocking st. Place the 10 (11) remaining sts on a st-holder.

FRONT PIECE

= 55 (60) sts.

Cast off for the armholes on each side every 2nd row, 2,2,1,1 (3,2,1,1) sts. = 43 (46) sts. Work until the piece measures 7.5 cm. Cast off the middle 9 (10) sts and finish each side

separately. Continue to decrease for the neckline every 2nd row, 3,2,1,1 sts = 10 (11) sts.

Work until the piece is the same length as the back piece. Place the sts on a st-holder and work the other side in the same way but reversed.

LEFT SLEEVE

Cuff: Cast on 34 (38) sts with circular needle size 2.5 mm.

Work 3 rows stocking st back and forth (row 1 = wrong side).

On the next row work a buttonhole as follows: K until there are 6 sts left, slip 1 st, K1 and pass the slipped st over, 1 yarn over, K2 together, K2 (on the next row P1 + K1 in yarn over).

Work 7 rows stocking st. Insert a marker in the 4th of these 7 rows. **Further measurements are from this marker.** On the next row work a buttonhole in the same way as before. Work 6 rows stocking st.

On the next row (wrong side) cast off the first 8 sts and P to end of row = 26 (30) sts. Increase 25 (29) sts evenly on the next row as follows: K1, *m1l, K1*, repeat from *-* to end of row = 51 (59) sts.

Sleeve: Divide the sts on DPNs size 3 mm. Continue working in the round. Work until the piece measures 5 cm. Decrease by knitting the first 2 sts on the round together. Work 2 (1.5) cm. Decrease by knitting the last 2 sts on the round together. Decrease alternately at the beginning and end of the round every 2 (1.5) cm, a total of 5 (7) times = 46 (52) sts. Work until the piece measures 16 (17) cm. Cast off 4 (6) sts mid-under sleeve and continue working back and forth.

Cast off every 2nd row, 2,1,1 sts on each side = 34 (38) sts. Continue working without further decreases until the sleeve measures 23 (25) cm. Work the next row from the right side as follows: K1 (3), *place 4 sts on an extra needle in front of the piece, K1 st from the extra needle together with 1 st from the back needle 4 times (all sts from extra needle now worked). Place 4 sts on an extra needle in behind the piece, K1 st from the front needle together with 1 st from the extra needle 4 times*, repeat from*-* one more time, K1 (3) = 18 (22) sts.

P 1 row and cast off on the next row by knitting 2 and 2 sts together along the whole row, **at the same time** as casting off.

Fold the bottom edge on the sleeve to the wrong side and sew down with loose sts.





RIGHT SLEEVE

Cuff: Cast on 34 (38) sts with circular needle size 2.5 mm. Work 3 rows stocking st back and forth (row 1 = wrong side). On the next row work a buttonhole as follows: K2, slip 1 st, K1 and pass the slipped st over, 1 yarn over, K2 together, K to end of row (On next row P1 + K1 in the yarn over). Work 7 rows stocking st. Insert a marker in the 4th of these 7 rows. **Further measurements are taken from this marker.** On the next r work a buttonhole in the same way as before. Work 7 rows stocking st. On the next row (right side) work as follows: Cast off 8 sts, K1 ***m1l**, K1*, repeat from *-* to end of row = 51 (59) sts. Divide the sts on DNPs size 3 mm and finish in the same way as the left sleeve

ASSEMBLY

Sew the shoulders together with grafting sts. Sew in the sleeves, making sure the middle of the sleeve matches the top of the shoulder. Fold the buttonhole edge to the wrong side, with the holes above each other. Sew down with invisible sts from the wrong side. You can sew around the buttonholes with buttonhole st if you wish.

NECKLINE

Knit up 82 (86) sts along the neck, using size 2.5 mm short circular needle. Work 4 rows stocking st. back and forth. Cast off. Fold edge to the wrong side and sew down with loose sts. Sew on the buttons.

BONNET

Cast on 85 sts with size 2.5 mm short circular needle. Work pattern according to diagram **B**, back and forth (row 1.= wrong side). Work until the piece measures 6.5 cm. Change

to needle size 3 mm and continue the pattern as before, until you have worked 3 repeats in height. Work next r (right side) as follows: *P9, 1 yarn over, slip 1 st knit-wise, K1, pass slipped st over, k3 twisted, K2 together, 1 yarn over, K4 *, repeat from *-* 3 more times, finish with P5, cast on 3 new sts = 88 sts.

Do not turn, continue in the round.

Round 1: *P10 , K1 , K3 twisted, K1 , P5 *, repeat from *-* 3 more times, finish with P8.

Round 2: *P8 , P2 together, 1 yarn over, slip 1 st, K1, pass slipped st over, K1 twisted, K2 together, 1 yarn over, P2 together, P3 *, repeat from *-* 3 more times, finish with P8 = 80 sts.

Round 3: P2 together 3 times, *P4, K1, K1 twisted, K1, P11 *, repeat from *-* 2 more times, finish with P4, K1, K1 twisted, K1, P3, P2 together 5 times = 72 sts.

Round 4: *P6, P2 together, 1 yarn over, slip 2 sts (as if to knit together), K1, pass slipped st over, 1 yarn over, P2 together, P5 *, repeat from *-* 3 more times = 64 sts.

Round 5: *P8, K1, P7 *, repeat from *-* to end of round.

Round 6: *P6, P2 together, P1, P2 together, P5 *, repeat from *-* to end of round = 56 sts.

Round 7: P.

Round 8: *P5, P2 together, P1, P2 together, P4 *, repeat from *-* to end of round = 48 sts.

Round 9: *P4, P2 together, P1, P2 together, P3 *, repeat from *-* to end of round = 40 sts.

Round 10: *P3, P2 together, P1, P2 together, P2 *, repeat from *-* to end of round = 32 sts.

Round 11: *P2, P2 together, P1, P2 together, P1 *, repeat from *-* to end of round = 24 sts.

Round 12: *P1, P2 together, P1, P2 together *, repeat from *-* to end of round = 16 sts.

Cut strand. K all sts together 2 and 2, **at the same time** as the strand is pulled through the sts. Knit up approx. 60 sts along bottom edge of bonnet, with size 3 mm needle. Work 4 rows stocking st. back and forth, r 1 is from the wrong side (= folding edge). Change to needle size 2.5 mm and work 5 r stocking st. Cast off. Fold edge to the wrong side and sew down with loose sts. Thread silk ribbon through the casting.

SHOES

LEFT SHOE

Cast on 35 (43) sts with size 3 mm needle. K 1 row (= wrong side). Insert a marker round. sts 14, 18 and 22 (18, 22 and 26) on the r = marker-sts. *Increase by knitting 1 in both the front and back loops of first and last sts on r and K1 + 1 yarn over + K1 in all marker-sts = 43 (51) sts. K 1 row *. Repeat from *-* one more time = 51 (59) sts. K 4 (6) rows. Then work pattern according to diagram **C** over the middle 19 sts and garter st as before over the 16 (20) sts on each side. When the pattern is finished, there are 39 (47) sts. K 2 rows. On the next r from the right side, cast off the middle 17 (21) sts and finish each side separately.

Left side: Begin from wrong side. K 11 (13) sts, cast on 16 (18) sts at end of r = strap. K 4 rows over these 27 (31) sts. Cast

off. **Right side:** Begin from wrong side and K 5 rows. Cast off.



RIGHT SHOE

Work in the same way as the left shoe, until you have cast off the middle sts.

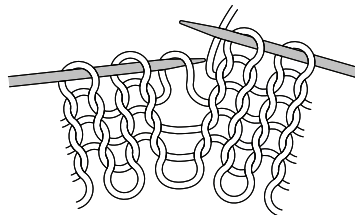
Left side: Begin from wrong side and K 5 rows. Cast off.

Right side: Cast on 16 (18) sts = strap and K 11 (13) sts from wrong side. K 4 rows over these 27 (31) sts. Cast off.

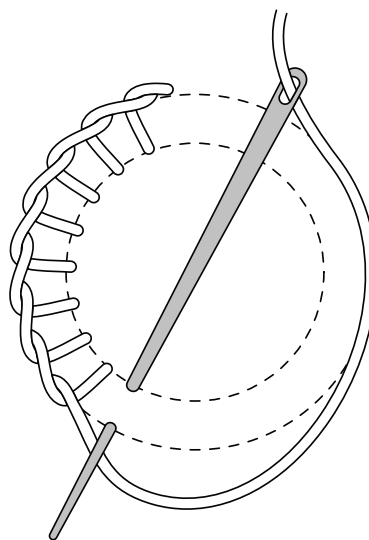
ASSEMBLY

Crochet a loop of 3-5 ch.sts and sew it to short end of strap. The number of chain sts depends on size of button. Sew a button onto opposite side. Sew the shoes together underneath and mid-back.

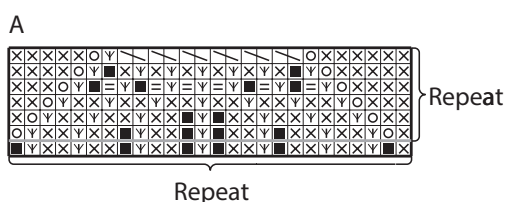
M1l: Pick up the strand between 2 sts, place it on left needle as shown in picture, work through the back loop.



BLANKET ST CIRCLE

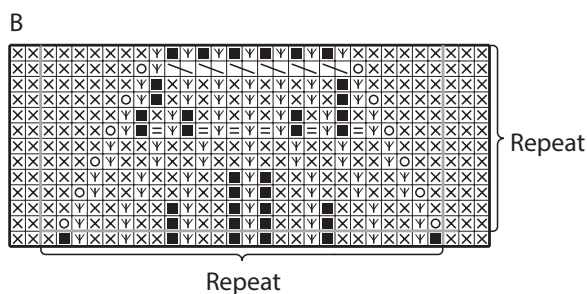


DIAGRAM

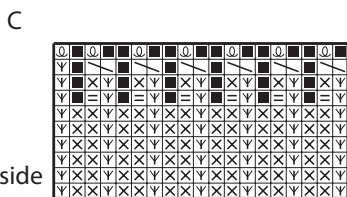


Repeat

Row 1 = wrong side



Repeat



Row 1 = right side

- K on right side, P on wrong side
- ⊗ P on right side, K on wrong side
- ⌞ K twisted on right side, P twisted on wrong side
- Yarn over
- ≡ P2 together
- ⧉ K2 twisted together
- No st (skip this square)
- ⊙ K twisted on wrong side

Do you need inspiration for your next knitting project? Check out the website houseofyarn.no