



DALE[®]
GARN

HOUSE of YARN

GLADLUS JUMPER

DG 464-05 | MERINO 22



Dale Garn - a part of HOUSE of YARN

DG 464-05

GLADLUS JUMPER

DESIGN

Hrönn Jónsdóttir

YARN

MERINO 22, 100 % extra fine merino wool,
50 grams = approx. 125 metres

Alternative yarns: LERKE, ØKO BOMULL,
NATURAL LANOLIN WOOL

SIZES

6 (12) months 2 (4) 6 (8) years

GARMENT MEASUREMENTS

Chest size approx. 51 (55) 58 (62) 65 (69) cm
Full length mid-back approx. 28 (31) 36 (42) 46 (50) cm
Sleeve-length approx. 18 (20) 25 (28) 35 (38) cm

YARN AMOUNTS

Colour 1 3 (3) 4 (4) 5 (6) balls
Colour 2 1 ball in all sizes

COLOURS

Colour 1 Off-white 2021
Colour 2 Denim 2010

NOTE! We have updated the yarn in this pattern, as the original yarn is discontinued. The colours can therefore differ slightly from those shown in the picture.

SUGGESTED NEEDLE SIZES

3 mm and 4 mm long and short circular needles and DPNs

KNITTING TENSION

22 sts with stocking st on 4 mm needles = 10 cm

Check your knitting tension by working a swatch.

Count the number of sts per 10 cm; if you have more sts than suggested, change to a larger needle size. If you have fewer sts, change to a smaller needle size.

NOTE! Many people will knit colourwork with 2 colours tighter than one-colour stocking st. You may want to adjust the needle size to maintain your knitting tension, whether you're working with 2 colours or one-colour stocking st.

FIND THE RIGHT SIZE

1. Measure a garment that fits you.
2. Compare the measurements with the pattern.
3. Choose your size from the chest measurements.
4. Body and sleeves can be worked longer or shorter as needed.



ABBREVIATIONS

K = knit, P = purl, st. = stitch, y/o = yarn over,
DPN = double pointed needles, m1r = make one right,
m1l = make one left

BODY

Cast on 112 (120) 128 (136) 144 (152) sts with colour 2 on 3 mm circular needles. P 1 round. Change to colour 1 and work 1 round of stocking st. Continue in the round with rib (K2, P2) until the piece measures 2 (2) 2.5 (2.5) 3 (3) cm. Place a marker in each side with 56 (60) 64 (68) 72 (76) sts on both the front and back pieces. Change to 4 mm needles and work according to the diagram until the piece measures 16 (18) 22 (27) 30 (33) cm.

NOTE! Begin at the arrow for your size. Divide the piece at each marker and finish the front and back pieces separately.

BACK PIECE

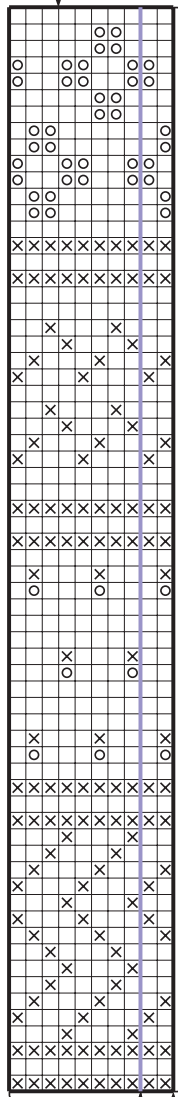
Cast on 1 st in each side. These are edge sts, which are knitted on every row and are not counted in the diagram.
NOTE! When working back and forth with 2 colours, work the last st on each row with both colours and slip the first st knit-wise on every row. Continue the pattern until the piece measures 26 (29) 34 (40) 44 (48) cm. Work diagonal shoulders by casting off at the beginning of each row 5,5,4,4 (5,5,5,4) 6,5,5,4 (6,6,5,5) 7,6,5,5 (7,6,6,5) sts on each side = 20 (22) 24 (26) 28 (30) sts left in the middle. Place these sts on a st holder and work the front piece.

© House of Yarn AS

The copying and publication of materials and patterns, or their use for commercial purposes, is not allowed without prior agreement with House of Yarn AS.

DIAGRAM

Middle of sleeve



Begin here 6 months,
2 and 6 years

- K from right side, p from wrong side with colour 1
- P from right side, k from wrong side with colour 1
- K from right side, p from wrong side with colour 2

FRONT PIECE

Work in the same way as the back piece until the front measures 24 (27) 32 (38) 42 (46) cm. Cast off the middle 6 (8) 10 (12) 14 (16) sts for the neckline and finish each shoulder separately. **Left piece:** Cast off for the neckline every 2nd row 3,2,1,1 sts. **At the same time,** when the piece measures 26 (29) 34 (40) 44 (48) cm, work the diagonal shoulder in the same way as on the back piece. Work the right piece in the same way but in reverse.

SLEEVES

Cast on 28 (28) 32 (32) 36 (36) sts with colour 2 on 3 mm DPNs. P 1 round. Change to colour 1 and work 1 round of stocking st. Continue in the round with rib (K2, P2) until the sleeve measures 4 (4) 4.5 (4.5) 5 (5) cm. Change to 4 mm needles and work according to the diagram (count outwards from the middle to determine where the different sizes begin), **at the same time** on row 1, increase evenly to 32 (36) 38 (44) 46 (50) sts.

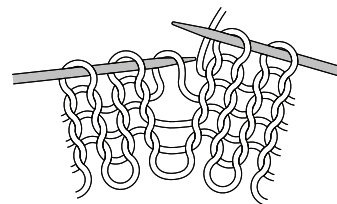
When the piece measures 5 (5) 5.5 (5.5) 6 (6) cm, increase 2 sts mid-under the sleeve. M1l after the first st of the round and m1r before the last st of the round (see separate explanation). Repeat the increases every 2 (2.5) 2.5 (3) 3.5 (4) cm, until you have a total of 44 (48) 52 (58) 62 (66) sts. Work until the sleeve measures approx. 18 (20) 25 (28) 35 (38) cm (adjust the length so you don't finish immediately after 2 ridges in the pattern). Loosely cast off and work one more sleeve.

ASSEMBLY

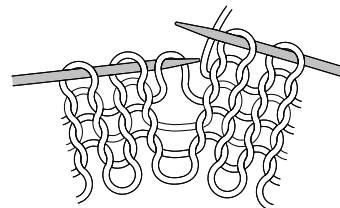
Join the shoulder seams and sew in the sleeves. Place the 20 (22) 24 (26) 28 (30) sts from the st holder on 3 mm needles. Pick up approx. 12 sts per 5 cm with colour 1 around the neckline. St count should be divisible by 4. Work rib (K2, P2) in the round for 2 (2.5) 2.5 (3) 3 (3) cm. Change to colour 2 and K 1 round. Cast off with P.

M1R AND M1L

M1l: Pick up the strand between 2 sts, place it on left needle as shown in picture, work through the back loop.



M1r: Pick up strand between 2 sts, place it on left needle as shown in picture, work the front loop.



Do you need inspiration for your next knitting project? Check out the website houseofyarn.no