



DALE[®]
GARN

HOUSE of YARN

HENRIK JACKET, TROUSERS & BEANIE

DG 349-03 | MERINO 22



Dale Garn - a part of HOUSE of YARN

DG 349-03

HENRIK JACKET, TROUSERS & BEANIE

DESIGN

Anne-Kirsti Espenes

YARN

MERINO 22, 100 % extra fine merino wool,
50 grams = approx. 125 metres

SIZES

2 (4) 6 years

GARMENT MEASUREMENTS

Jacket

Chest measurements approx. 62 (69) 76 cm

Full length approx. 38 (42) 46 cm

Sleeve-length approx. 24 (28) 33 cm

Trousers

Waist approx. 56 (60) 66 cm

Leg-length approx. 30 (38) 43 cm

YARN AMOUNTS

Jacket

Colour 1: 3 (3) 4 balls

Colour 2: 2 (3) 3 balls

Colour 3: 1 (2) 2 balls

Trousers

Colour 1: 3 (4) 5 balls

Beanie

Colour 1: 1 (2) 2 balls

COLOURS

Colour 1: Mottled grey 2002

Colour 2: Off white 2021

Colour 3: Aqua green 2015

NOTE!: We have updated the yarn in this pattern, as the previous yarn is no longer produced. The colours can therefore differ slightly from those shown in the picture.

SUGGESTED NEEDLE SIZES

3.5 and 4 mm short and long circular needles and DPNs

ACCESSORIES

7 (8) 8 buttons

KNITTING TENSION

23 sts patterned stocking st with needle size 4 mm = 10 cm

24 sts rib, K2, P2, (stretched slightly) with needle size 3.5 mm

= 10 cm

Yarn alternatives: ALPAKKA FORTE CLASSIC, LERKE,
NATURAL LANOLIN WOOL



Check your knitting tension by working a swatch. Count the number of sts per 10 cm; if you have more sts than suggested, change to a larger needle size. If you have fewer sts, change to a smaller needle size.

FIND THE RIGHT SIZE

1. Measure a garment that fits you.
2. Compare the measurements with the pattern.
3. Choose your size from the chest measurements.
4. Body and sleeves can be worked longer or shorter as needed.

ABBREVIATIONS

K = knit, P = purl, st. = stitch, r = row, DPN = double pointed needles, m1r = make one right, m1l = make one left

© House of Yarn AS

The copying and publication of materials and patterns, or their use for commercial purposes, is not allowed without prior agreement with House of Yarn AS.

JACKET

FRONT AND BACK PIECES

Cast on 149 (165) 179 sts with colour 1 and circular needle size 3.5 mm. Work rib back and forth with K1, P1. When the piece measures 1.5 cm, work a buttonhole on the left front piece for boys and right front piece for girls: Cast off 2 sts, 3 sts in from edge. On the next row cast on 2 new sts over the cast-off sts.

Make sure to tighten the strand a little so the buttonhole is not too big. When the piece measures 4 (4.5) 5 cm, place 8 sts on each side on a thread for the bands = 133 (149) 163 sts. Change to 4 mm circular needle. Cast on 4 sts mid-front. Work pattern in the round according to diagram **A** and, on the first round, increase 6 (6) 8 sts evenly spaced = 139 (155) 171 sts. **NOTE!** The 4 sts are purled on each round and are later used to sew and cut in. These sts are not part of the pattern. Insert a marker-thread in st no. 34 (38) 42 on either side of the 4 sts = sides.

When the piece measures 34 (37.5) 41 cm, cast off the 4 sts mid-front. Now continue back and forth as follows: Place 5 (6) 7 sts on each side on a thread. Cast off for the neck every 2nd row, 2,1,1,1 st. Continue working without further decreases, **at the same time**, when the piece measures 36 (40) 44 cm, place the middle 19 (21) 23 sts on a thread for the neck. Finish each side separately and cast off every 2nd row for the neck 2,1 sts. Work until the piece measures 38 (42) 46 cm. Cast off the last 47 (53) 59 sts.

SLEEVES

Cast on 34 (38) 42 sts with colour 1 and DPNs size 3.5 mm. Work rib in the round, with K1, P1, for 4 (4.5) 5 cm. Change to 4 mm needles. Work pattern according to diagram **B** and increase 5sts evenly spaced on round 1. Count out so the middle marker is mid-top of sleeve. Then



increase 2 sts mid-under sleeve every 2 (2.5) 3 cm, 9 times = 57 (61) 65 sts. Work until the sleeve measures 24 (28) 33 cm. K 1 round with colour 1. Work stocking st with the wrong side out, back and forth for 1.5 cm for the lining. Increase 1 st at the beginning of each row so the edge slants. Cast off slightly loosely. Work the other sleeve in the same way.

ASSEMBLY

Mark the sleeve-width on each side along marker-sts. Sew a double machine seam round the markings and cut between the seams. Sew 2 double machine seams down the 4 sts mid-front and cut between the seams. Sew or graft together the shoulders.

BUTTON-BAND (right side boys/left side girls)

Place the 8 sts on needle size 3.5 mm. Work K1, P1 with colour 1 over the 8 sts and cast on 5 sts towards the front piece for lining. The 5 new sts are worked in stocking st. Work until the band reaches the neckline when stretched slightly. Cast off the 5 sts. Place the remaining 8 sts on a thread. Mark positions for 7 (8) 8 buttons. **NOTE!** Bottom buttonhole already worked and top buttonhole will be on the neck.

BUTTONHOLE-BAND

Work in the same way as the button-band but working buttonholes to correspond with the buttons.

NECKLINE

Worked with colour 1. Place sts from the threads front and back on needle size 3.5 mm and knit up from right side approx. 4 sts per 2 cm where you decreased for the neck. Include sts from bands and K1, P1 over all sts. «K and P» from bands should be continued on neck. Remember to work last buttonhole after approx. 1 cm. When the neck measures approx. 2 (2.5) 2.5 cm, cast off the 8 sts on each side. Continue working the remaining sts until the neck measures 4.5 (5.5) 5.5 cm. Cast off a little loosely with K and P. Fold the neck double to the inside and sew down with loose stitches. Fold the linings mid-front over the cut edges and sew down with loose sts, invisible on the right side. Sew in the sleeves. Fold the linings over the cut edges and sew down with loose sts. Sew on the buttons.

TROUSERS

Begin at the top. Cast on 136 (144) 160 sts with colour 1 and size 3.5 mm circular needle. The round begins mid-back. K1, P2, *K2, P2*, repeat *-*, finish with K1. Insert a marker mid-front and mid-back (=mb) and allow them to follow your work onwards. There should be 1 knitted st on each side of both markers. Continue the rib with K2, P2.

When the piece measures 1.5 cm, work a buttonhole to thread elastic through. Cast off the 2 first and 2 last sts on the round. On the next round cast on 4 new sts over the cast-off sts. When the piece measures 5 cm, work an elevation at the back: Work 5 sts past mb. Turn, slip 1 st and work 5 sts past mb on other side. Turn, slip 1 st and work 10 sts past mb. Turn, slip 1 st and work 10 sts past mb. Continue like this until you have turned 6 (7) 7 times on each side.

Continue the rib in the round over all sts until the piece measures 20 (22) 24 cm mid-front. Increase 1 st on each side of the 2 knitted sts mid-front and mid-back = 4 increased sts on the round. Increase by picking up the strand between 2 sts and knitting it twisted. On the next round, include the new sts in the rib, with the 2 sts mid-front and back still knitted. Repeat the increases every 2nd round a total of 7 times = 164 (172) 188 sts. Work 2 rounds without increasing. Cast off 2 sts mid-front and 2 sts mid-back = 80 (84) 92 sts on each leg.

LEFT LEG

Place a marker at the beginning of the round (inside leg) and continue rib in the round. Decrease 2 sts inside the leg every 1.5 cm, 18 (4) (0) times, then every 2 cm 0 (14) 20 times. Decrease by K2 together at beginning of round and K2 twisted together at end of round. The leg now measures approx. 27 (34) 40 cm and there are 44 (48) 52 sts left. Continue without further decreases until the leg measures 30 (38) 43 cm. Cast off with rib. Work the other leg in the same way.

ASSEMBLY

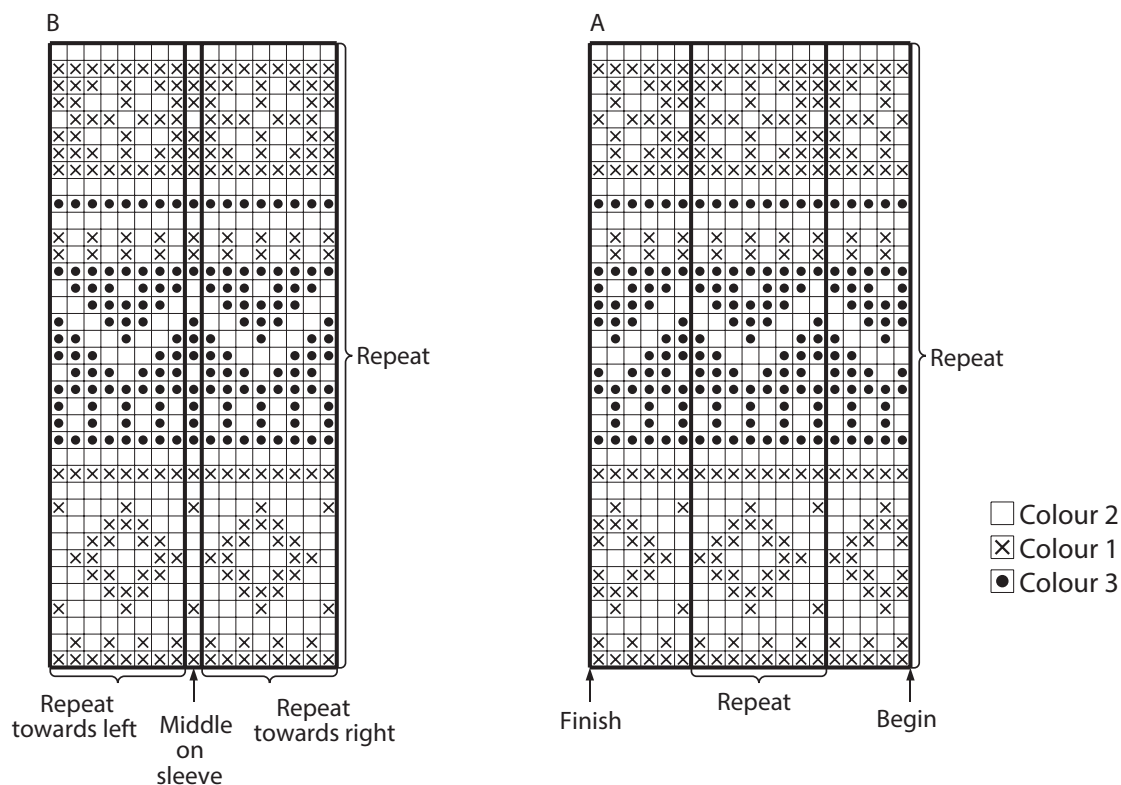
Sew crotch together. Fold approx. 2.5 cm of the waistline to wrong side and sew down with loose sts, leaving a casting for the elastic. Thread in the elastic.

BEANIE

Cast on 96 (104) 112 sts with colour 1 and circular needle size 3.5 mm. Work rib in the round, with K2, P2. When the piece measures 22 (24) 26 cm beginning to decrease P2 together in each purled section = 72 (78) 84 sts. K2, P1 for 5 rounds. K2 together in each knitted section = 48 (52) 56 sts. K1, P1 for 4 rounds. K2 together along the whole round = 24 (26) 28 sts. K 1 round. K2 together along the whole round = 12 (13) 14 sts. Cut strand, pull through remaining sts, tighten and fasten well.



DIAGRAM



Do you need inspiration for your next knitting project? Check out the website houseofyarn.no