



DALE[®]
GARN

HOUSE of YARN

JULIAN JACKET

DG 401-02 | LILLE LERKE



Dale Garn - a part of HOUSE of YARN

DG 401-02

JULIAN JACKET

DESIGN

Dale Garn

YARN

LILLE LERKE 53 % merino wool, 47 % Egyptian cotton,
50 grams = approx. 142 metres

SIZES

2 (4) 6 (8) 10 (12) years

NOTE! See GARMENT MEASUREMENTS to find the right size

GARMENT MEASUREMENTS

Chest size approx. 62 (65) 72 (75) 84 (87) cm

Full length approx. 37 (41) 44 (48) 52 (56) cm

Sleeve-length approx. 24 (27) 33 (36) 38 (40) cm

YARN AMOUNTS

Colour 1: 3 (4) 4 (5) 6 (7) balls

Colour 2: 2 (2) 3 (3) 3 (4) balls

Colour 3: 1 (1) 2 (2) 2 (2) balls

COLOURS

Colour 1: Honey 8143

Colour 2: Unbleached white 0020

Colour 3: Chocolate 8158

SUGGESTED NEEDLE SIZES

2.5 and 3.5 mm long and short circular needles and DPNs

ACCESSORIES

7 (7) 7 (8) 8 (8) buttons

KNITTING TENSION

26 sts with stocking st and needle size 3.5 mm = 10 cm

28 rounds stocking st with needle size 3.5 mm = 10 cm

Check your knitting tension by working a swatch.

Count the number of sts per 10 cm; if you have more sts than suggested, change to a larger needle size. If you have fewer sts, change to a smaller needle size.

FIND THE RIGHT SIZE

1. Measure a garment that fits you.
2. Compare the measurements with the pattern.
3. Choose your size from the chest measurements.
4. Body and sleeves can be worked longer or shorter as needed.

ABBREVIATIONS

K = knit, P = purl, st. = stitch, r = row, DPN = double pointed needles, m1r = make one right, m1l = make one left



STRIPED PATTERN

Work *2 rows colour 2, 2 rows colour 3, 2 rows colour 1*, repeat from*-* a total of 3 times, finish with 2 rows colour 2.

FRONT AND BACK PIECES

Cast on 171 (179) 195 (203) 227 (235) sts with colour 2 and circular needle size 2.5 mm. Work rib back and forth with **striped pattern** as follows: (row 1 = wrong side)

Wrong side: P1, K1, *P1 twisted, K1*, repeat from*-*, finish with P1.

Right side: K1, P1, *K1 twisted, P1 *, repeat from *-*, finish with K1.

NOTE! Tighten the first and last sts well.

At the same time, when the piece measures 1 cm, work a buttonhole on left edge for boys, right edge for girls.

Buttonhole boys (at end of row): Work until there are 7 sts left, K2 twisted together, 2 yarn overs, P2 together, work to end of row. On next row work yarn overs P1 twisted, K1.

Buttonhole girls (at beginning of row): Work 3 sts in rib, P2 together, 2 yarn overs, K2 twisted together, work to end of row.

© House of Yarn AS

The copying and publication of materials and patterns, or their use for commercial purposes, is not allowed without prior agreement with House of Yarn AS.



On next row work yarn overs K1, P1 twisted.
Place the 9 first and 9 last sts on a st-holder for the bands = 153 (161) 177 (185) 209 (217) sts.
Insert a marker in each side with 36 (38) 42 (44) 50 (52) sts on each front piece and 81 (85) 93 (97) 109 (113) sts on back piece.
Change to needle size 3.5 mm and continue working in the round, with stocking st and pattern according to diagram **A**, then diagram **B**, **at the same time** on round 1, cast on 5 new sts mid-front = cutting-sts which are not included in pattern or st-numbers.
Work until the piece measures approx. 21 (24) 27 (30) 33 (35) cm. On the next round cast off 8 each side for the armholes = 32 (34) 38 (40) 46 (48) sts on each front piece and 73 (77) 85 (89) 101 (105) sts on back piece.
Lay the piece to one side and work the sleeves.

SLEEVES

Cast on 46 (48) 50 (52) 54 (56) sts with colour 2 and circular needle size 2.5 mm. Work rib in the round (K1 twisted, P1) and **striped pattern**.
Change to needle size 3.5 mm and insert a marker round 2 sts mid-under the sleeve = marker-sts.
Continue with stocking st and pattern according to diagram **A**, then diagram **B**. Count out from middle of sleeve where the diagram should begin.
At the same time, when the sleeve measures 6 cm, increase

1 st on each side of the marker-sts. Repeat the increases every 2.5 (2.5) 2.5 (2.5) 2 (2) cm a total of 7 (8) 10 (11) 13 (15) times = 60 (64) 70 (74) 80 (86) sts.

Work until the sleeve measures approx. 24 (27) 33 (36) 38 (40) cm. Finish on the same round as on the body. **At the same time**, on the last round, cast off 8 sts mid-under the sleeve (= marker sts + 3 sts on each side) = 52 (56) 62 (66) 72 (78) sts.

Lay the sleeve to one side and work the other sleeve.

YOKE

Place the right front piece, right sleeve, back piece, left sleeve and left front piece on the same circular needle size 3.5 mm = 241 (257) 285 (301) 337 (357) sts. Insert a marker round 1 st on each side of the sleeve sts = marker-sts, which are worked with colour 1.

Continue with stocking st and pattern according to the diagram as before. On round 2 decrease for raglan by each marker-st as follows: Work to 2 sts before the marker-st. K2 twisted together, K1 (= marker-st), K2 together. Work with the colour which fits the pattern best.

Repeat the decreases for raglan every round 0 (0) 0 (4) 4 (6) times, then every 2nd round until you have decreased a total of 18 (20) 22 (24) 27 (29) times.

At the same time, when there are 5 (5) 6 (7) 8 (8) raglan decreases left, cast off 17 (19) 21 (23) 25 (27) sts mid-front (including the cutting-sts) for the neck.

Continue back and forth with pattern as before, decreasing for raglan from the right side. **At the same time**, continue to decrease for the neck on each side every 2nd row, 3,2,2 sts, then 1 st until a total of 18 (20) 22 (24) 27 (29) raglan decreases have been worked on the back piece.

ASSEMBLY

Sew 2 machine seams, with tight sts, on each side of the middle cutting-st. Cut up between the seams.
Sew together under the sleeves.

RIGHT FRONT EDGE BOYS/LEFT FRONT EDGE GIRLS

Place the 9 sts from the st-holder on the right/left side on needle size 2.5 mm and cast on 5 new sts towards the cut edge (= lining) with colour 1. Work rib as before over the first 9 sts and stocking st with wrong side out over the 5 lining-sts. Work until the edge is the length of the front piece when stretched. Cast off the 5 lining-sts and place the 9 other sts on a st-holder. Sew the edge to the front piece, sew the lining over the cut edge.

Mark the positions of 6 (6) 6 (7) 7 (7) buttons, the bottom button corresponding to the worked buttonhole, the others evenly spaced above.

NOTE! The 7th (7th) 7th (8th) 8th (8th) buttonhole is on the neck.

LEFT FRONT EDGE BOYS/RIGHT FRONT EDGE GIRLS

Work in the same way as the right/left edge, with buttonholes corresponding to the button markers.

NECKLINE

Use size 2.5 mm needles and colour 2. K 1 row from the right side over front edges and yoke, **at the same time** knit up approx. 5 sts per 2 cm on each side of the neck = approx. 141 (145) 149 (153) 157 (161) sts. St-number should be divisible by 2+1.

Continue back and forth with rib and **striped pattern** as follows:

Wrong side: P1, K1, *P1 twisted, K1*, repeat from *-*, finish with P1.

Right side: K1, P1, *K1 twisted, P1 *, repeat from *-*, finish with K1.

At the same time, when the neck measures 1.5 and 4.5 cm, work the last buttonhole.

Cast off with K and P.

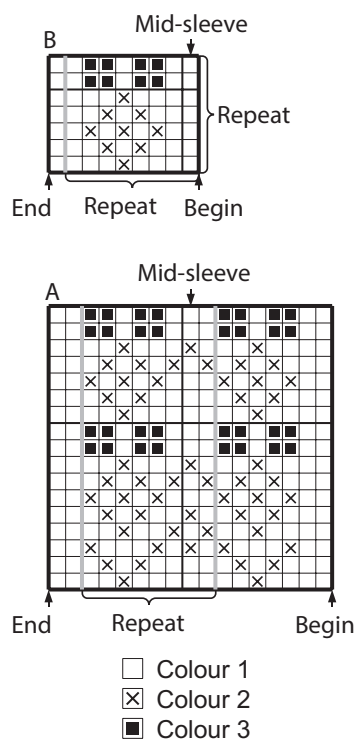
Fold the neck double to the inside and sew down with loose stitches.

Sew buttonhole st round the buttonholes, through both layers.

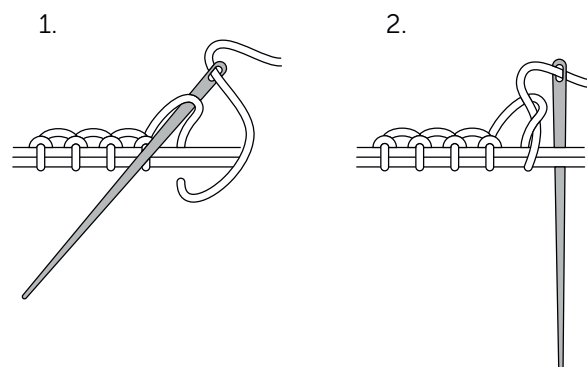
NOTE! Make sure the buttonholes are large enough.

Sew on the buttons.

DIAGRAM



BUTTONHOLE ST



Do you need inspiration for your next knitting project? Check out the website houseofyarn.no