



DALE<sup>®</sup>  
GARN

HOUSE of YARN

# SWEETIE JACKET & BEANIE

DG 433-14 | SOFT MERINO



DG 433-14

## SWEETIE JACKET & BEANIE

### DESIGN

Dale Garn

### YARN

SOFT MERINO 100 % extra fine merino wool,  
50 grams = approx. 187 metres

### SIZES

#### Jacket

0-3 (3-6) 6-9 months (1) 2 years

#### Beanie

0-3 (6-9) months 1-2 years

**NOTE!** See GARMENT MEASUREMENTS to find the right size

### GARMENT MEASUREMENTS

#### Jacket

Chest measurements approx. 45 (48) 51 (54) 57 cm

Full length approx. 27 (29) 31 (34) 38 cm

Sleeve length approx. 16 (17) 18 (20) 24 cm

### YARN AMOUNTS

#### Jacket

Colour 1: 3 (3) 3 (4) 5 balls

#### Beanie

Colour 2: 1 (1) 2 (2) 2 balls

### COLOURS

Colour 1 Mottled grey 3003

Colour 2 Light mottled grey 3002

### SUGGESTED NEEDLE SIZES

2.5 and 3 mm circular needles

Extra needle

### ACCESSORIES

#### Jacket

6 (6) 6 (7) 7 buttons

#### Beanie

1 button, 1 pom pom

### KNITTING TENSION

26 sts garter st with needle size 3 mm = 10 cm

8 sts pattern according to diagram with needle size

3 mm = 2 cm

**Alternative yarn:** BABY ULL

**Check your knitting tension by working a swatch.**

**Count the number of sts per 10 cm; if you have more sts than suggested, change to a larger needle size. If you have fewer sts, change to a smaller needle size.**



### FIND THE RIGHT SIZE

1. Measure a garment that fits you.
2. Compare the measurements with the pattern.
3. Choose your size from the chest measurements.
4. Body and sleeves can be worked longer or shorter as needed.

### ABBREVIATIONS

K = knit, P = purl, st. = stitch, r = row, DPN = double pointed needles, m1r = make one right, m1l = make one left

---

**GARTER ST = K all rows.**

## JACKET

### FRONT AND BACK PIECES

Cast on 122 (130) 138 (146) 154 sts with circular needle size 3 mm. Work back and forth with the following pattern (row 1.= wrong side): Work 39 (43) 47 (51) 55 sts **in garter st**, \*pattern according to diagram, 10 sts in **garter st\***; repeat from \*-\* 1 more time, work pattern according to diagram and 39 (43) 47 (51) 55 sts **in garter st**.

Insert a marker in each side, with 27 (29) 31 (33) 35 sts on each front piece and 68 (72) 76 (80) 84 sts on the back piece. Work until the piece measures 18 (19) 20 (22) 25 cm. Finish with a row from the wrong side, **at the same time** as 8 sts are cast off for each armhole (= 4 sts on each side of both markers) = 23 (25) 27 (29) 31 sts on each front piece and 60 (64) 68 (72) 76 sts on the back piece. Lay the piece to one side and work the sleeves.

### © House of Yarn AS

The copying and publication of materials and patterns, or their use for commercial purposes, is not allowed without prior agreement with House of Yarn AS.

Photo: Sofie Hammer @by.sofiehammer



## SLEEVES

Cast on 34 (36) 38 (40) 42 sts with size 2.5 mm needles. Work rib back and forth for 3 (3) 3 (4) 4 cm, with K1, P1. Change to 3 mm needles and work **garter st**. When the piece measures 4 (4) 4 (5) 5 cm, increase 1 st on each side. Repeat this increase every 2 cm, 4 (5) 6 (7) 8 more times = 44 (48) 52 (56) 60 sts. Work until the sleeve measures 16 (17) 18 (20) 24 cm. Finish with a row from the wrong side, **at the same time** as you cast off 4 sts on each side = 36 (40) 44 (48) 52 sts. Work one more sleeve in the same way.

## YOKE

Place the right front piece, right sleeve, back piece, left sleeve and left front piece on the same circular needle size 3 mm = 178 (194) 210 (226) 242 sts. Insert a marker in each transition = 4 markers. Continue with garter st and pattern as before. On row 3 begin to decrease for raglan at each marker as follows: Work to 2 sts before the marker, slip 1 st, K1, pass slipped st over, K2 together = 8 sts decreased. Repeat this decrease every 4th row, 4 (5) 6 (7) 8 more times, then every 2nd row, 9 times. **At the same time**, when you have 2 (2) 2 (3) 3 decreases left, place the first and last 8 (8) 9 (9) 10 sts on a st-holder for the neck. Cast off 1 st at beginning of each row until the raglan decreases are finished. Leave the stitches on the needle.

## NECKLINE

Place sts on needle size 2.5 mm, including sts from st-holder, and knit up approx. 4-5 sts along neck decreases on each side. K 1 row from right side, **at the same time** as the st-number is adjusted to 71 (75) 79 (83) 87 sts. Work 5 rows rib back and forth, with K1, P1. Cast off with K and P sts.

## ASSEMBLY

Sew the sleeve seams, edge to edge with mattress st.  
Sew the sleeve seams.

## LEFT BAND GIRL/RIGHT BAND BOY

Knit up approx. 69 (75) 81 (89) 99 sts. St-number should be divisible by 2+1. Work 5 rows rib, with K1, P1 (finish with K1). Cast off with K and P sts. Mark the positions for 6 (6) 6 (7) 7 buttons evenly distributed; the top and bottom buttons approx. 1 cm from edge.

## RIGHT BAND GIRL/LEFT BAND BOY

Work in the same way as left / right edge but on row 3 work buttonholes corresponding to the buttons.

**Buttonhole:** K2 together, 2 yarn overs, K2 twisted together. On next row work the yarn overs either K and P or P and K. Sew on the buttons.

## BEANIE

### LEFT EAR FLAP

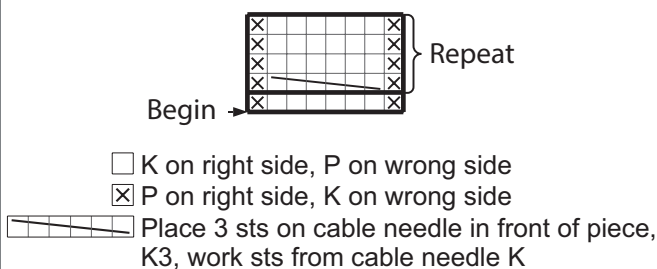
Cast on 5 sts with colour 2 and needle size 3 mm. Work **garter st** back and forth, **at the same time** on each row from the right side, increase 1 st inside the outermost st on each side, until there are 17 (19) 21 sts. Cut the strand and lay the piece to one side.

### TIE AND RIGHT EAR FLAP

Cast on 5 sts with needle size 3 mm. Work 4 rows **garter st**. On the next row work a buttonhole as follows: K1, K2 together, 1 yarn over, K2. Continue with **garter st**. When the the piece measures 6 (8) 10 cm, increase 1 st inside the outermost st on each side. Repeat this increase every 2nd row until there are 17 (19) 21 sts.

Cut the strand and lay the piece to one side. Cast on 16 (17) 18 sts, work sts from left ear flap, cast on 34 (36) 38 sts (= front), work sts from right ear flap, cast on 16 (17) 18 sts = 100 (108) 116 sts. Continue working back and forth (row 1 from wrong side): Work 8 (9) 10 sts **garter stitch**, pattern according to diagram, 17 (19) 21 sts **garter st**, pattern according to diagram, 18 (20) 22 sts **garter st**, pattern according to diagram, 17 (19) 21 sts **garter st**, pattern according to diagram and 8 (9) 10 sts **garter st**. When the piece measures 9 (10) 11 cm, and the next row is from the right side, K2 together on each side of each patterned section (= 8 sts decreased) = 92 (100) 108 sts. Repeat this decrease every 4th row 3 more times. = 68 (76) 84 sts Then decrease every row until there are 44 sts left. K all sts together 2 and 2 = 22 sts. Cut the yarn and pull it through the remaining sts. Sew the beanie together, edge to edge, with mattress sts. Sew on the buttons. Sew on the pom pom

## DIAGRAM



Do you need inspiration for your next knitting project? Check out the website [houseofyarn.no](http://houseofyarn.no)