



DALE[®]
GARN

HOUSE of YARN

MINSTEN NEWBORN SET

DG 396-02 | LERKE



DG 396-02

MINSTEN NEWBORN SET

DESIGN

Kari Haugen

YARN

LERKE 53 % merino wool, 47 % Egyptian cotton,
50 grams = approx. 115 metres

Alternative yarn: MERINO 22, LERKE, ØKO BOMULL

SIZES

Top 0–3 (6–9) 12 months (2) 3 years

Bottoms 0–3 (6–9) 12 (18) months

Bonnet and booties 0–3 (6–9) 12 months

NOTE! See MEASUREMENTS to find the right size

MEASUREMENTS

Top

Upper body approx. 50 (56) 58 (61) 67 cm

Full length approx. 27 (30) 33 (38) 42 cm

Sleeves approx. 16 (17) 19 (24) 26 cm

Bottoms

Hip to hip approx. 44 (47) 51 (55) cm

Blanket Approx. 71 x 80 cm

YARN REQUIREMENTS

Top

Colour 1 3 (4) 4 (5) 6 balls

Bottoms

Colour 2 2 (2) 3 (3) balls

Bonnet and booties

Colour 2 2 (2) 3 balls

Blanket

Colour 1 7 balls

COLOURS

Colour 1 Light Jade 8137

Colour 2 Blue Jeans 8138

ACCESSORIES

1 button for the top

Elastic for the bottoms

SUGGESTED NEEDLES

3.5 mm and 4 mm short circular needles and DPNs

4.5 mm long circular needles

3 mm crochet hook

GAUGE

25 sts in pattern according to diagram **A** on

4 mm needles = 10 cm

17 sts in pattern according to diagram **B** on

4 mm needles = 7 cm

20 sts in pattern according to diagram **C** on

4.5 mm needles = 10 cm

22 sts with stocking st on 4 mm needles = 10 cm



Check your gauge by working a swatch.
Count the number of sts per 10 cm. If you have more sts than suggested, change to a larger needle size. If you have fewer sts change to a smaller needle size.

FIND THE RIGHT SIZE

1. Measure a knitted garment that fits.
2. Compare your measurements with those in the pattern.
3. Select a size based on the upper body measurements.
4. Body and sleeves may be worked longer or shorter as desired.

ABBREVIATIONS

k = knit, p = purl, st = stitch, R = round/row,
k2tog = knit 2 together, m = marker, PM = place marker,
tbl = through back loop, m1l = make one left,
m1r = make one right

© House of Yarn AS

The copying and publication of materials and patterns, or their use for commercial purposes, is not allowed without prior agreement with House of Yarn AS.



TOP

BODY

Cast on 110 (124) 130 (136) 150 sts on 3.5 mm circular needles. Work in the round: *P across 1 R, K across 1 R*, repeat from *-* 1 more time and then P across 1 R = 3 ridges of garter st. K across 1 R **while at the same time** increasing 15 (15) 16 (17) 17 sts evenly spaced = 125 (139) 146 (153) 167 sts.

Change to 4 mm needles. Work diagram **A** as illustrated for your chosen size. When the piece measures 17 (19) 21 (25) 28 cm, PM in each side with 63 (69) 73 (77) 83 sts for the front piece (= 31 (34) 36 (38) 41 sts on each side of centre front) and 62 (70) 73 (76) 84 for the back piece. Work 1 R and cast off 8 sts in each side (= 4 sts on each side of m) = 55 (61) 65 (69) 75 sts for the front piece and 54 (62) 65 (68) 76 sts for the back piece.

Put aside and work the sleeves.

SLEEVES

Cast on 34 (36) 38 (40) 42 sts on 3.5 mm DPNs. Work 3 (3) 4 (4) 5 cm rib in the round, with K1, P1. Change to 4 mm needles.

K across 1 R **while at the same time** increasing 3 sts evenly spaced = 37 (39) 41 (43) 45 sts. Work next R as follows: Work 10 (11) 12 (13) 14 sts in stocking st, then 17 sts according to diagram **B** and 10 (11) 12 (13) 14 sts in stocking st. PM around the middle 2 sts underneath the sleeve.

Continue working diagram and stocking st as before, **while at the same time** increasing 1 st on each side of each m

every 4 (3) 3 (3) 2.5 cm until you have 41 (45) 49 (53) 57 sts remaining. The new sts are worked in stocking st. Work until the sleeve measures 16 (17) 19 (24) 26 cm. Cast off 8 sts underneath the sleeve = 33 (37) 41 (45) 49 sts.

Work one more sleeve in the same way.

YOKE

Place left sleeve, front piece, right sleeve and back piece on 4 mm circular needles = 175 (197) 212 (227) 249 sts.

Continue with stocking st and work diagram as before. PM in each transition = 4 markers. On R2, decrease for raglan as follows: Work to 2 sts before m, K2tog, slip 1 st, K1, pass slipped st over. Repeat decrease at each m = 8 decreases. Repeat the decreases on the following R, then on every 2nd R a total of 5 (6) 7 (8) 9 times = 135 (149) 156 (163) 177 sts. Divide for a split in the back by moving the beginning of R to centre back. For size 24 months, cast off 1 st centre back. Continue working flat. First and last sts (edge sts) are K on all rows. When you have decreased for raglan 8 (9) 10 (11) 12 times (= 111 (125) 131 (139) 153 sts), place 11 (13) 15 (15) 17 sts from centre front onto a st holder. **NOTE!** Raglan decreases will go over the lace pattern of diagrams **A** and **B**. When there is no more room for Y/Os and the decreases following them, continue in stocking st.

Finish each side separately as follows: Continue working raglan decreases as before, **while at the same time** casting off for neckline every 2nd R, 2,2 sts, then 1 st until the raglan decreases meet the neckline.

Work the other side in the same way but in reverse. Leave sts on the needle.

NECKLINE

Place sts on 3.5 mm needles and pick up approx. 4–5 sts per 2 cm along the neckline. Decrease 5 sts evenly spaced on R1, and work a K1, P1 rib for 4 (4.5) 4.5 (5) 5 cm. Cast off with K and P sts.

ASSEMBLY

Join underarm seams. Fold the neck double to the inside and sew down with loose stitches. Work double crochets around the split at the back. Crochet a loop of chain sts in the middle of the neckline. The number of chain sts depends on size of button. Attach the button.

BOTTOMS

FRONT PIECE

Cast on 15 (17) 17 (19) sts on 4 mm circular needles.

Working flat, work 3.5 (4) 4.5 (5) cm stocking st. Continue with stocking st and increase 1 st in each side, every 2nd R, 14 (15) 16 (17) times = 43 (47) 49 (53) sts.

At the same time, when you have approx. 21–23 sts left on your needles and the next R is from the RS, work diagram **B** across the middle 17 sts. On the next R increase 4 (4) 5 (5) sts in each side = 51 (55) 59 (63) sts. Place sts on a st-holder.

BACK PIECE

Using 4 mm needles, pick up 1 st through each st of the cast-on edge on the front piece = 15 (17) 17 (19) sts. P across 1 R from the WS. Continue with stocking st across all sts and increase 1 st in each side every 2nd R, 6 (7) 8 (9) times = 27 (31) 33 (37) sts. Increase 1 st in each side **every** R, 10 (10) 11 (11) times = 47 (51) 55 (59) sts.

Place the sts from the front piece onto the same circular needles as the back piece = 98 (106) 114 (122) sts. PM in the transitions in each side. R now begins in the middle of the back piece. Work stocking st and diagram **B** in the round. When the piece measures 3 (4) 5 (6) cm from the join, decrease 1 st on each side of each m = 94 (102) 110 (118) sts. Work until the piece measures 16 (18) 20 (22) cm from the cast-on edge.

PM around 1 st in the middle of the back piece (=MS). Work the bottoms taller in the back as follows:

Work 7 (7) 6 (6) sts past the MS. Turn, slip 1 st and work 7 (7) 6 (6) sts past MS on the other side. Turn, slip 1 st and work 14 (14) 12 (12) sts past MS. Turn, slip 1 st and work 14 (14) 12 (12) sts past MS on the other side.

Continue like this, working 7 (7) 6 (6) more sts each time you turn, until you have turned 3 (3) 4 (4) times on each side.

Work back to MS. K across 1 R.

Change to 3.5 mm needles. Work rib in the round (K1, P1) for 6 cm. Cast off with K and P sts.

LEGS

Using 3.5 mm DPNs, pick up approx. 10–11 sts per 5 cm around one leghole. Work rib in the round (K1, P1) for 6 cm. Cast off. Work the other leg in the same way.

ASSEMBLY

Fold the rib at the top double to the inside and sew down with loose stitches. Leave an opening where you can insert the elastic. Fold edges around legholes double to the wrong side and sew down with loose sts.

BONNET

Using 3.5 mm DPNs, cast on 16 sts. Work stocking st in the round and increase on R2 as follows: *K1, Y/O, K2, Y/O, K1*, repeat from *-* 3 more times = 24 sts. K across 1 R. On R 4 work increases as follows: *K1, Y/O, K3, Y/O, K2*, repeat from *-* 3 more times = 32 sts. K across 1 R. On R 6 work increases as follows: *K1, Y/O, K4, Y/O, K3*, repeat from *-* 3 more times = 40 sts. Repeat the increases in the same way until you have a total of 80 (88) 96 sts. On the next R, K2tog 10 (11) 12 times = 10 (11) 12 sts, and place these sts on a st holder (centre back). Place the remaining sts on 3.5 mm circular needles = 60 (66) 72 sts. Working flat, work 6.5 (7) 7.5 cm garter st with the last R being from the RS. Work a K1, P1 rib for 4 cm. Cast off with K and P sts.

ASSEMBLY

Fold the ribbed edge double to the inside and sew down with loose stitches. Pick up approx. 10 sts per 5 cm with needle size 3.5 mm on each side of the sts from the st holder. Make sure to knit up through both layers of the neck. Work a K1, P1 rib for 4 cm. Cast off with K and P sts. Fold the edge double to the inside and sew down.

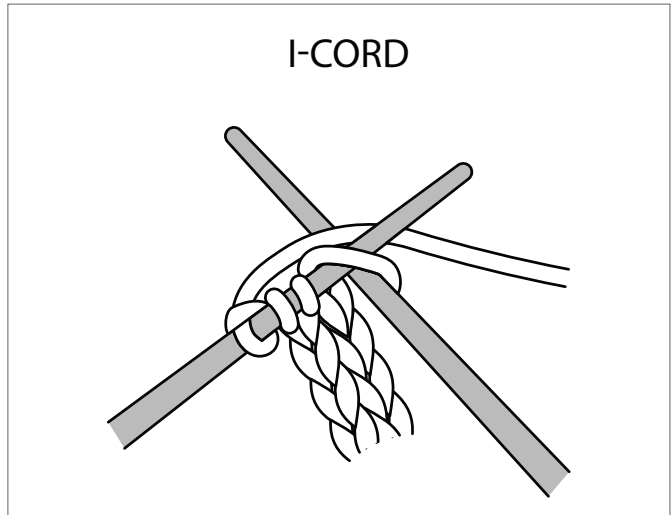
Work an i-cord in the round as follows: Cast on 3 sts on 3 mm DPNs. *Push the sts to the right end of the needle, tighten the working yarn at the back and K3*, repeat from *-* and work to desired length. Cast off. Use a knitting loom if you wish. Thread the cord through the hem.

BOOTIES

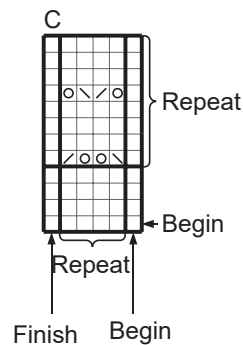
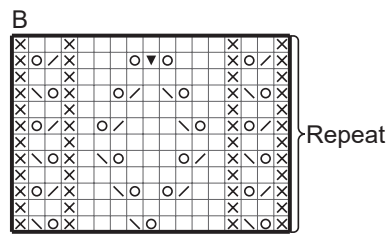
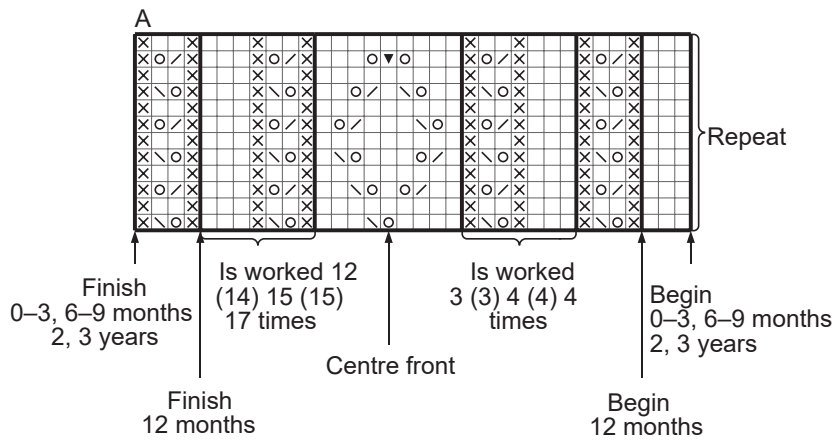
Cast on 29 (31) 33 sts on 3.5 mm circular needles. Work rib flat (K1, P1) for 5 (6) 6 cm, finish with a K st. The rest of the bootie is worked flat in garter st (K across all Rs). Adjust st count to 29 (31) 34 sts. After R 4 place 10 (11) 12 sts from each side on a st holder. Continue across the middle 9 (9) 10 sts until the instep measures 4.5 (5.5) 6 cm and the last R is from the WS. Cut yarn. K the 10 (11) 12 sts from the st holder on the right side, pick up 10 (12) 13 sts along one side of the instep, K the middle 9 (9) 10 sts, pick up 10 (12) 13 sts along the other side of the instep and K the last 10 (11) 12 sts = 49 (55) 60 sts. Continue working garter st flat, **while at the same time** decreasing 1 st on each side every 4th R 2 times = 45 (51) 56 sts. When the piece measures 3 (3.5) 4 cm from where you picked up sts along the instep, cast off 18 (20) 22 sts on each side. Continue working the middle 9 (11) 12 sts for the sole. When the sole measures 6 (7) 8 cm, decrease 1 st on each side every 2nd row, 2 (2) 3 times. Cast off the last 5 (7) 6 sts. Sew the bootie together. Work the other bootie in the same way.

BLANKET

Cast on 142 sts on 4.5 mm circular needles. Work 15 Rs of garter st flat (K all Rs). Place 8 sts from each side on a st holder = (126) sts. Work diagram **C** until the piece measures approx. 77 cm. **NOTE!** When you make 2 Y/Os, work them as P1, P1 tbl on the next row (WS). Finish with one whole repetition of the diagram and then P across 1 R from the WS. Work the 8 sts from each side as follows: Cast on 1 st towards the blanket = 9 sts. Work garter st until the edge is as long as the blanket and the final R is from the WS. Cast off the extra stitch and place the remaining 8 sts on the same needle as the blanket. Work the other side in the same way = 142 sts. Work 15 rows garter st. Cast off. Sew the edges neatly onto the blanket.



DIAGRAM



- K from RS, P from WS
- P from RS, K from WS
- 1 Y/O
- k2tog
- Slip 1 st, k1, pass slipped st over
- Knot: K1, k1 tbl, k1 through same st, turn and p, turn and k, turn and p, turn and slip 1 st, k2tog, pass slipped st over
- Slip 1 st, K2tog, pass slipped st over

Do you need inspiration for your next knitting project? Check out the website houseofyarn.no