



DALE<sup>®</sup>  
GARN

HOUSE of YARN

# LILLE TRILLE BABY SET

DG 444-05 | BABY ULL



DG 444-05

## LILLE TRILLE BABY SET

### DESIGN

Brit Frafjord Ørstavik

### YARN

BABY ULL 100 % superwash merino,  
50 grams = approx. 165 metres

**Alternative yarn:** SOFT MERINO, LILLE LERKE

### SIZES

#### Cardigan, romper, and leggings

44 (50–56) 62 (68) 74 (80)

#### Bonnet

44 (50–62) 68–74 (80)

### MEASUREMENTS

#### Cardigan

Upper body approx. 41 (46) 48 (51) 53 (56) cm  
Full length mid-front approx. 23 (25) 27 (29) 31 (33) cm  
Sleeves approx. 15 (16) 17 (18) 19 (20) cm

#### Romper

Upper body approx. 39 (42) 44 (49) 50 (53) cm  
Hip to hip approx. 51 (56) 60 (64) 69 (69) cm  
Legs inseam approx. 15 (17) 19 (21) 24 (27) cm  
Full length approx. 38 (44) 53 (59) 66 (72) cm

#### Leggings

Waistline approx. 38 (43) 44 (49) 51 (53) cm  
Hip to hip approx. 43 (47) 49 (53) 56 (59) cm  
Legs inseam approx. 15 (17) 19 (21) 24 (27) cm

### YARN REQUIREMENTS

#### Cardigan

2 (2) 2 (3) 3 (4) balls

#### Romper

2 (3) 3 (3) 4 (5) balls

#### Leggings

2 (2) 2 (3) 3 (3) balls

#### Bonnet

1 ball in all sizes

### COLOUR

Half-bleached white 0017

### SUGGESTED NEEDLES

2.5 mm and 3 mm long and short circular needles and DPNs  
2 x 2 mm DPNs

### ACCESSORIES

#### Cardigan

5 (5) 6 (6) 7 (7) buttons

#### Romper

4 buttons

### GAUGE

#### Cardigan

27 sts x 52 R in pattern on 3 mm needles = 10 x 10 cm

#### Romper, leggings, and bonnet

28 sts x 38 R stocking st on 3 mm needles = 10 x 10 cm



**Check your gauge by working a swatch.**  
**Count the number of sts per 10 cm. If you have more sts than suggested, change to a larger needle size. If you have fewer sts change to a smaller needle size.**

### FIND THE RIGHT SIZE

1. Measure a garment that fits.
2. Compare your measurements with those in the pattern.
3. Select a size based on the upper body measurements.
4. Body and sleeves may be worked longer or shorter as desired.

### ABBREVIATIONS

k = knit, p = purl, st = stitch, R = round/row,  
DPN = double pointed needles, Y/O = yarn over,  
K2tog = knit 2 together, m = marker, PM = place marker,  
tbl = through back loop, m1l = make one left,  
m1r = make one right, RS/WS = right/wrong side

#### Baby sizes in centilongs correspond to age in months:

44 = premature  
50–56 = 0–1 month  
62 = 3 months  
68 = 6 months  
74 = 9 months  
80 = 12 months

#### © House of Yarn AS

The copying and publication of materials and patterns, or their use for commercial purposes, is not allowed without prior agreement with House of Yarn AS.

# CARDIGAN

## Worked top down.

**NOTE! Tighten the first and last 6 sts on each R well for a neat edge.**

Cast on 73 (77) 81 (85) 87 (89) sts on 3 mm needles. Work 9 rows garter st (= 5 ridges) flat (R 1 = WS).

**At the same time**, work a buttonhole as follows on R 4:

**Girls:** Work until 5 sts remain, K2tog, 2 Y/Os, K2tog, K1.

**Boy:** K1, K2tog, 2 Y/Os, K2tog, work to end of row.

**Both:** Next R: K1, K1 tbl into the Y/Os.

Repeat the buttonhole 5 (5) 6 (6) 6 (7) times in total (always on RS), every 4 (4) 5 (5) 5 (5) cm.

Work pattern according to the diagram, inside 6 edge sts on each side. The first and last 6 sts are always K (= garter st).

Increase at the arrow in the diagram as follows:

**Increase 1:** Increase 26 (24) 26 (26) 24 (24) sts evenly spaced = 99 (101) 107 (111) 111 (113) sts.

**Increase 2:** Increase 26 (24) 26 (26) 24 (24) sts evenly spaced = 125 (125) 133 (137) 135 (137) sts.

**Increase 3:** Increase 26 (22) 24 (28) 24 (28) sts evenly spaced = 151 (147) 157 (165) 159 (165) sts.

**Increase 4:** Increase 26 (24) 26 (30) 24 (28) sts evenly spaced = 177 (171) 183 (195) 183 (193) sts.

Size 44 ends here. Finish after working a full diagram.

**Increase 5:** Increase (22) 24 (26) 24 (26) sts evenly spaced = (193) 207 (221) 207 (219) sts.

Sizes (50–56) 62 (68) end here. Finish after working a full diagram.

**Increase 6:** Increase 22 (26) sts evenly spaced = 229 (245) sts. Sizes 74 (80) end here. Finish after working a full diagram.

Your work now measures approx. 8 (9.5) 9.5 (9.5) 11 (11) cm.

Work 1 RS R. **At the same time**, divide the work on the last R

as follows: Work 26 (29) 31 (33) 34 (36) sts (= left front piece), place 38 (40) 44 (46) 48 (52) sts on a st holder (= left sleeve), cast on 8 new sts under the sleeve, work 49 (55) 57 (63) 65 (69) sts (= back piece), place 38 (40) 44 (46) 48 (52) sts on a st holder (= right sleeve), cast on 8 new sts under the sleeve, work 26 (29) 31 (33) 34 (36) sts (= right front piece).

## FRONT AND BACK PIECES

= 117 (129) 135 (145) 149 (157) sts.

Continue in pattern according to diagram, with 6 sts in garter st on each side (R 1 = WS). Work until the piece measures 18 (20) 23 (24) 26 (28) cm centre front, finishing after working a full diagram. Remember to work buttonholes.

Work 9 R garter st (= 5 ridges). **At the same time**, work the following decreases on the last WS R: \*K2tog tbl, place st back on left needle\*, repeat from \*-\* to end of R.

## SLEEVES

Pick up 8 sts through the new sts under the armhole on the body and place sts from sleeve on 3 mm needles = 46 (48) 52 (54) 56 (60) sts. PM around 2 sts under the sleeve = m sts.

Continue working pattern in the round according to the diagram. When the sleeve measures 1.5 (2) 2 (2) 2 (2) cm, decrease 1 st on each side of the m sts.

Repeat the decreases every 2 cm (all sizes), 6 (6) 7 (7) 7 (8) times in total = 34 (36) 38 (40) 42 (44) sts.

Work until the piece measures approx. 13 (14) 15 (16)

17 (18) cm, finish after working a full diagram. Now work 5 ridges in the round as follows: P 1 R, \*K 1 round, P 1 round\*, repeat from \*-\* a total of 4 times.

Your work now measures approx. 15 (16) 17 (18) 19 (20) cm.

Cast off as follows: \*K2tog tbl, place st back on left needle\*, repeat from \*-\* to end of R.

Work the other sleeve in the same way.

## ASSEMBLY

Sew on the buttons.

# ROMPER

Begin at the bottom of one leg.

Cast on 40 (42) 44 (46) 50 (52) sts on 2.5 mm needles. Work 4 (4) 5 (5) 5 (5) cm rib in the round (K1, P1).

PM around the first and last sts = m sts.

Change to 3 mm needles and continue with stocking st and pattern according to diagram **B**. Begin at the arrow indicated for your size. **At the same time**, increase 7 sts evenly spaced on R 1 = 47 (49) 51 (53) 57 (59) sts.

When the piece measures 6 cm, **m1l** after the m sts and **m1r** before the marker-sts = 49 (51) 53 (55) 59 (61) sts.

The increased stitches are worked into the pattern.

Repeat the increases every cm 10 (12) 13 (14) 14 (15) times in total = 67 (73) 77 (81) 85 (89) sts. Work until the piece measures approx. 15 (17) 19 (21) 24 (27) cm.

Put aside and work the other sleeve in the same way.

Place both legs onto 3 mm circular needles, increases facing each other.





**At the same time** cast on 5 (5) 7 (9) 11 (7) sts between the legs, both in the front and back = 144 (156) 168 (180) 192 (192) sts. PM centre back.

Continue working pattern in the round as before.

When the piece measures 11 (13.5) 20 (21.5) 25 (27.5) cm from the leg join, work German short rows in pattern, according to diagram, across the back piece as follows:

Begin at the m mid-back and work 28 (28) 32 (36) 36 (36) sts, turn, work 1 **turning st** (see illustration), work 28 (28) 32 (36) 36 (36) sts past the m, turn, work 1 **turning st**, work 22 (22) 26 (31) 31 (31) sts past the m. Continue in this way with 6 (6) 6 (5) 5 (5) sts less on each short row, until you've turned 4 (4) 4 (6) 6 (6) times from each side.

**NOTE!** On next R, work the 2 loops of the turning st from the short rows as K2tog or P2tog, depending on where they fit into the rib.

Change to 2.5 mm needles and work rib (K1, P1) for 3 (3) 3 (4) 4 (4) cm. **At the same time**, decrease 17 (19) 22 (23) 26 (22) sts evenly spaced on R 1 on both the front and back pieces = 110 (118) 124 (134) 140 (148) sts. PM in each side with 55 (59) 62 (67) 70 (74) sts for both the front and back pieces.

Change to 3 mm needles and work 1 R stocking st.

**At the same time**, cast off 6 (8) 8 (8) 8 (8) sts on each side for the armholes (= 3 (4) 4 (4) 4 (4) sts on each side of each m) = 49 (51) 54 (59) 62 (66) sts on both the front and back pieces.

The front and back pieces are finished separately.

## BACK PIECE

= 49 (51) 54 (59) 62 (66) sts.

Work stocking st flat, and keep casting off for armholes at the beginning of each R: 2,1,1 (2,1,1) 2,1,1 (3,1,1) 3,1,1 (3,1,1) sts = 41 (43) 46 (49) 52 (56) sts. When the piece measures 7 (7) 7 (8) 8 (8) cm between the division and the armhole, cast off the

middle 13 (15) 16 (17) 20 (20) sts for the neckline and finish each side separately.

Continue casting off for the neckline every 2nd row, 2,1,1 st. Work until the armhole measures approx. 9 (10) 11 (12)

13 (13) cm and the last R was from the WS.

Work next R as follows: K1, slip 1 st knit-wise, slip next st knit-wise, place sts back on left needle and K2tog tbl, K until 3 sts remain, K2tog, K1 = 8 (8) 9 (10) 10 (12) sts.

Cast off. Work the other side in the same way.

## FRONT PIECE

= 49 (51) 54 (59) 62 (66) sts.

Work stocking st flat, and keep casting off for armholes at the beginning of each R: 2,1,1 (2,1,1) 2,1,1 (3,1,1) 3,1,1 (3,1,1) sts = 41 (43) 46 (49) 52 (56) sts.

When the piece measures 6 (6) 6 (7) 7 (7) cm between the division and the armhole, cast off the middle 7 (9) 10 (11) 14 (14) sts for the neckline and finish each side separately.

Cast off for the neckline every 2nd row 3,2,1,1 sts (same for all sizes). Work until the armhole measures approx. 9 (10) 11 (12) 13 (13) cm and the last R was from the WS. Work next R as follows: K1, slip 1 st knit-wise, slip next st knit-wise, place sts back on left needle and K2tog tbl, K until 3 sts remain, K2tog, K1 = 8 (8) 9 (10) 10 (12) sts.

Work 1 row of stocking st.

Cast off. Work the other side in the same way.

## ASSEMBLY

Close the opening between the legs.

## EDGE

Begin at the bottom of one armhole. Using 2.5 mm needles, pick up approx. 13–14 sts per 5 cm all the way around the armholes, straps and neckline. **NOTE!** Pick up 2 extra sts on each side of the cast-off sts on each side at the top of the straps, to ensure a tidy edge. St count must be divisible by 2. Work 5 cm rib in the round with K1, P1. **At the same time**, on R 3 work 2 buttonholes over each strap in the front as follows: Make the first buttonhole by working 1 Y/O and K2tog tbl, work 3 sts in rib; make the second buttonhole by working K2tog, 1 Y/O. On next R, K or P into the Y/Os depending on where they fit into the rib.

Cast off as follows: \*K2tog tbl, place st back on left needle\*, repeat from \*-\* to end of R. **NOTE!** At every 10th st, K3 together tbl. Sew on the buttons.

## LEGGINGS

**Begin at the bottom of one leg.**

Cast on 40 (42) 44 (46) 50 (52) sts on 2.5 mm needles. Work 4 (4) 5 (5) 5 (5) cm rib in the round (K1, P1).

PM around the first and last sts = m sts.

Change to 3 mm needles and work stocking st. When the piece measures 6 cm, **m1l** after the m sts and **m1r** before the marker-sts = 42 (44) 46 (48) 52 (54) sts.

Repeat the increases every 1.5 cm a total of 6 (8) 8 (8) 8 (9) times = 52 (58) 60 (62) 66 (70) sts. Work until the piece measures 15 (17) 19 (21) 24 (27) cm.  
 Put aside and work the other leg in the same way.  
 Place both legs onto 3 mm circular needles, increases facing each other. **At the same time** cast on 8 (8) 8 (12) 12 (12) sts between the legs, both in the front and back = 120 (132) 136 (148) 156 (164) sts.  
 PM in the middle of the front and back pieces. R now begins in the middle of the back piece.  
 Continue with stocking st in the round until the piece measures 13 (14) 15 (17) 18 (20) cm, measured from the join between the legs.  
 Work German short rows as follows: K 28 (28) 32 (36) 36 (36) sts, turn, work 1 **turning st** (see illustration), P 28 (28) 32 (36) 36 (36) sts past the m in the back, turn, work 1 **turning st**, K 22 (22) 26 (31) 31 (31) sts past the m. Continue in this way with 6 (6) 7 (5) 5 (5) sts less on each short row, until you've turned 4 (4) 4 (6) 6 (6) times from each side.  
 Change to 2.5 mm needles and work rib (K1, P1) for 8 (8) 8 (10) 10 (12) cm.

**NOTE!** Work the 2 loops of the turning st from the short rows as K2tog or P2tog, depending on where they fit into the rib. Cast off as follows: \*K2tog tbl, place st back on left needle\*, repeat from \*-\* to end of R.

## BONNET

Cast on 101 (111) 125 (135) sts on 3 mm needles. Knit 3 rows flat (R 1 = WS). **At the same time**, P3M as follows on R 3: K 25 (27) 31 (33) sts, PM, K 34 (38) 42 (46) sts, PM, K 25 (27) 31 (33) sts, PM, K 17 (19) 21 (23).

K to 1st marker, then continue as follows:

**R1:** K 17 (18) 20 (21) sts. Turn.

**R2:** Work 1 **turning st** (see illustration), P 8 sts. Turn.

**NOTE!** On next R, work the 2 loops of the turning st from the short rows as K2tog tbl from RS and P2tog from WS (tighten well).

**R3:** Work 1 **turning st**, K1, K2tog, K1, slip 1 st, K1, pass the slipped st over, K 4. Turn.

**R4:** Work 1 **turning st**, P 10 sts. Turn.

**R5:** Work 1 **turning st**, K1, K2tog, K 3, slip 1 st, K1, pass the slipped st over, K 4. Turn.

**R6:** Work 1 **turning st**, P 12 sts. Turn.

**R7:** Work 1 **turning st**, K1, K2tog, K 5, slip 1 st, K1, pass the slipped st over, K 4. Turn.

**R8:** Work 1 **turning st**, P 14 sts. Turn.

**R9:** Work 1 **turning st**, K1, K2tog, K 7, slip 1 st, K1, pass the slipped st over, K 4. Turn.

**R10:** Work 1 **turning st**, P 16 sts. Turn.

### **Size premature:**

Work 1 **turning st**, K to 3rd m, repeat R 1–9.

**R10:** Work 1 **turning st**, P to end of R = 85 sts.

### **0–3 months:**

**R11:** Work 1 **turning st**, K 17 sts. Turn.

**R12:** Work 1 **turning st**, P 18 sts. Turn.

Work 1 **turning st**, K to 3rd m, repeat R 1–11. Turn.

**R12:** Work 1 **turning st**, P to end of R = 95 sts.

### **6–9 months:**

**R11:** Work 1 **turning st**, K1, K2tog, K 9, slip 1 st knit-wise, K1, pass the slipped st over, K 4. Turn.

**R12:** Work 1 **turning st**, P 18 sts. Turn.

**R13:** Work 1 **turning st**, K 19 sts. Turn.

**R14:** Work 1 **turning st**, P 20 sts. Turn.

Work 1 **turning st**, K to 3rd m, repeat R 1–13. Turn.

**R14:** Work 1 **turning st**, P to end of R = 105 sts.

### **12 months:**

**R11:** Work 1 **turning st**, K1, K2tog, K 9, slip 1 st knit-wise, K1, pass the slipped st over, K 4. Turn.

**R12:** Work 1 **turning st**, P 18 sts. Turn.

**R13:** Work 1 **turning st**, K 19 sts. Turn.

**R14:** Work 1 **turning st**, P 20 sts. Turn.

**R15:** Work 1 **turning st**, K 21 sts. Turn.

**R16:** Work 1 **turning st**, P 22 sts. Turn.

Work 1 **turning st**, K to 3rd m, repeat R 1–15. Turn.

**R16:** Work 1 **turning st**, P to end of R = 115 sts.

### **All sizes:**

= 85 (95) 105 (115) sts.

Place all sts onto 4 x 3 mm DPNs. PM at beginning of R.

Continue in the round with stocking st. **At the same time**, decrease 1 (5) 3 (1) sts evenly spaced on R 1 = 84 (90) 102 (114) sts.

Work until the piece measures 9 (11) 12 (14) cm mid-front, then P6M as follows: \*K 12 (13) 15 (17) sts, PM, K 2 sts, PM\*, repeat from \*-\* to end of R.

Continue with stocking st and decrease for top of bonnet as follows: \*K2tog, K 8 (9) 11 (13) sts, slip 1 st knit-wise, slip next st knit-wise, place 2 sts back on left needle and K2tog tbl, K 2\*, repeat from \*-\* = 72 (78) 90 (102) sts.

Work 1 round stocking st with no decreases.

\*K2tog, K 6 (7) 9 (11) sts, slip 1 st knit-wise, slip next st knit-wise, place 2 sts back on left needle and K2tog tbl, K 2\*, repeat from \*-\* = 60 (66) 78 (90) sts.

Work 1 round stocking st with no decreases.

Continue decreasing on every 2nd R, with 2 sts less between each decrease and until there are 24 (30) 30 (30) sts left.

Next R: \*K2tog\*, repeat \*-\* to end of R = 12 (15) 15 (15) sts.

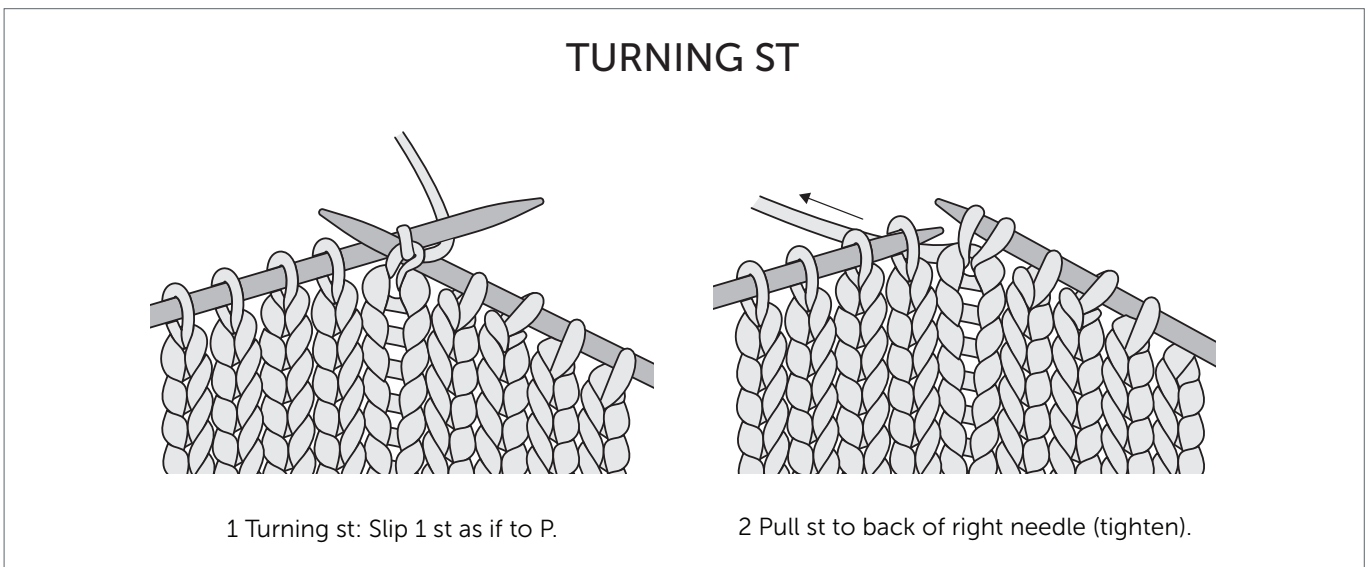
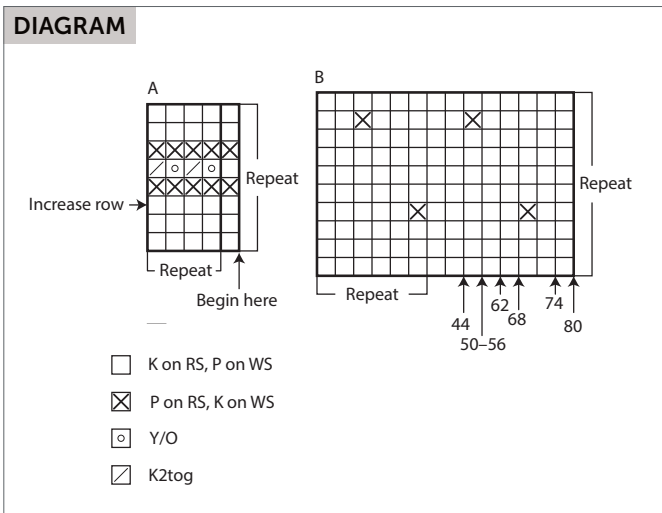
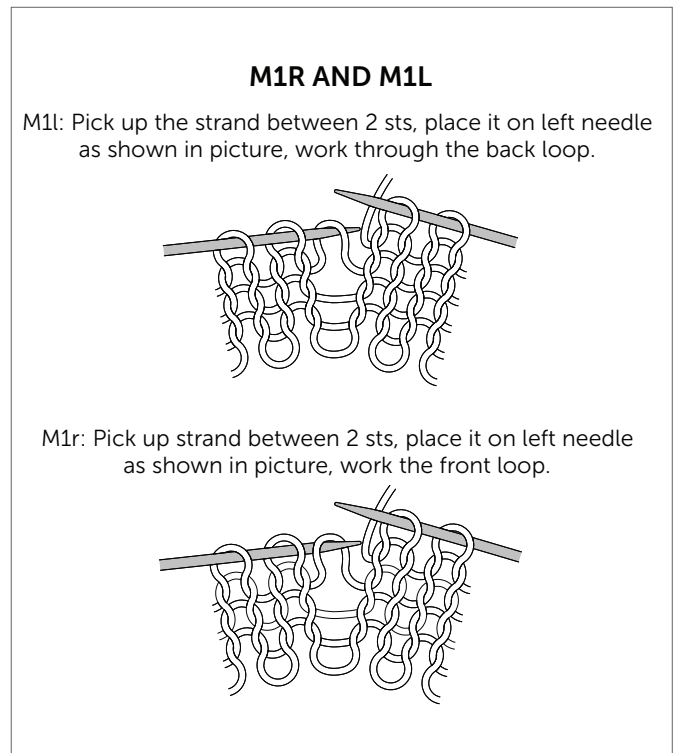
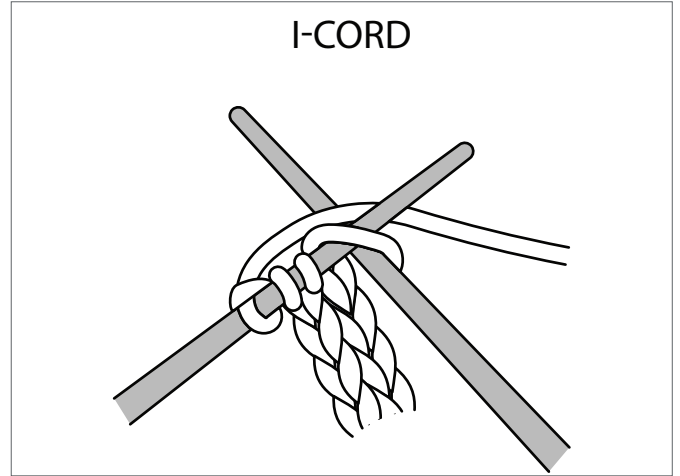
Cut the yarn and pull it through the remaining sts. Tighten and weave in loose end.

## I-CORD

Cast on 4 sts on 2 mm DPNs, through the pointy end of the ear flap from RS, and work in the round: K 4 sts, \*push the sts to the right hand end of the needle, tighten the working yarn in back and K 4 sts\*, repeat from \*-\* until the cord measures 25–30 cm or your preferred length.

Cut the yarn and pull it through the remaining sts. Tighten and weave in loose end.

Work one more i-cord in the same way on the other ear flap.



Do you need inspiration for your next knitting project? Check out the website [houseofyarn.no](http://houseofyarn.no)