



JUMPER FOR BOYS

DSA 35-12 | ALPAKKA TWEED



Du Store Alpakka – a part of **HOUSE of YARN**

DSA 35-12

JUMPER FOR BOYS

DESIGN

Hrönn Jónsdóttir

YARN

ALPAKKA TWEED 50 % alpaca, 30 % wool, 20 % Donegal,
50 grams = 80 metres

SIZES

2 (4) 6 (8) years

MEASUREMENTS

Upper body approx. 61 (69) 71 (77) cm
Full length approx. 38 (42) 46 (50) cm
Sleeve length approx. 25 (27) 33 (36) cm

YARN REQUIREMENTS

7 (8) 8 (9) balls

COLOUR

Beige 107

SUGGESTED NEEDLES

4 mm and 5 mm circular needles and DPNs.
4 mm short circular needles. Cable needle

ACCESSORIES

3 (4) 4 (4) buttons

GAUGE

17 sts with stocking st on 5 mm needles = 10 cm
23 sts cable pattern on 5 mm needles = 10 cm

Check your gauge by working a swatch.

Count the number of sts per 10 cm. If you have more sts than suggested, change to a larger needle size. If you have fewer sts change to a smaller needle size.

FIND THE RIGHT SIZE

1. Measure a knitted garment that fits.
2. Compare your measurements with those in the pattern.
3. Select a size based on the upper body measurements.
4. Body and sleeves may be worked longer or shorter as needed.

ABBREVIATIONS

k = knit, p = purl, st = stitch, R = round/row,
DPN = double pointed needles, K2tog = knit 2 together,
m = marker, PM = place marker, tbl = through back loop,
Y/O = yarn over, RS/WS = right/wrong side

© House of Yarn AS

The copying and publication of materials and patterns, or their use for commercial purposes, is not allowed without prior agreement with House of Yarn AS.



TEXTURED PATTERN (FOR SLEEVES)

R 1: *K1, P1*, repeat from *-*.

R 2: K through K sts and P through P sts.

R 3: K through P sts and P through K sts.

R 4: K through K sts and P through P sts.

Repeat R 1–4

BODY

Cast on 132 (148) 152 (168) sts on 4 mm circular needles. Work a twisted rib in the round with K1 tbl, P1 (begin with K1 tbl for sizes 2 (4) years and with P1 for 6 (8) years) until the piece measures 3 (4) 4 (5) cm. Change to 5 mm needles and work next R as follows: Work 14 (14) 15 (15) sts twisted rib as before, pattern according to diagram across the next 39 (47) 47 (55) sts, **while at the same time** increasing 1 st after approx. 20 (24) 24 (28) sts (you will have 40 (48) 48 (56) sts worked in pattern = middle front sts), twisted rib as before across the next 27 (27) 29 (29) sts (all sizes begin with P1), pattern according to diagram across the next 39 (47) 47 (55) sts, **while at the same time** increasing

1 st after approx. 20 (24) 24 (28) sts (you will have 40 (48) 48 (56) sts worked in pattern = middle back sts), twisted rib as before across the last 13 (13) 14 (14) sts. Continue working with this division until the piece measures 26 (29) 32 (35) cm. Cast off for armholes on the next R: Cast off the first 6 (6) 7 (7) sts, work as before across the next 56 (64) 64 (72) sts (front piece), cast off 11 (11) 13 (13) sts, work as before across the next 56 (64) 64 (72) sts (back piece), cast off the last 5 (5) 6 (6) sts. Set aside and work the sleeves.

SLEEVES

Cast on 28 (32) 33 (32) sts on 4 mm DPNs and work a twisted rib in the round (K1 tbl, P1) until sleeve measures 3 (4) 4 (5) cm. PM around the first st on R = sleeve m. Change to 5 mm needles and continue working textured pattern in the round. Increase 2 underarm sts (on each side of sleeve m) every 1.5 cm (same for all sizes).

NOTE! On the last R of decreases, increase only at beginning of R = 53 (61) 65 (71) sts. Work until the sleeve measures 25 (27) 33 (36) cm. Cast off 11 (11) 13 (13) underarm sts, lay piece aside and work the other sleeve in the same way.

YOKE

Place all sts on one set of 5 mm circular needles. First the front piece sts, right sleeve, back piece, and finally left sleeve = 196 (228) 232 (260) sts. PM in each join.

Work in the round, with twisted rib as before across the first and last 8 sts of front and back pieces, and cables and structured pattern as before across all other sts. **At the same time**, work raglan decreases every 2nd R as follows: Work *7 sts twisted rib, P2 tog tbl, work to 9 sts before next m, P2 tog, 7 sts twisted rib, work 2 sts tog (the first 2 sleeve sts – either P2 tog or K2 tog depending on where you are in the pattern), work to 2 sts before next m, work 2 sts tog (the last 2 sleeve sts – either P2 tog or K2 tog depending on where you are in the pattern)*, repeat from *-* once more = 8 sts decreased.

NOTE! Where the cables are affected by the decreases, work st as K or P according to pattern.

Continue increasing like this every 2nd round 3 (3) 4 (4) times. Divide piece at beginning of R and work flat. Cast on 8 new sts at end of R (after left sleeve) for a button band.

Work the 8 new sts in a twisted rib (K1 tbl, P1) but at the beginning of each R, slip 1 st knitwise with yarn held in front. Last st on each R is K = edge st. **NOTE!** When working flat, all P sts in the rib are to be P tbl.

Work a buttonhole at the beginning of R (from the RS) on every 14th (12th) 11th (13th) R (= 3 (4) 4 (4) buttonholes in total). Buttonhole is worked as follows: Work the first 2 sts on the R as before, K 2 tog tbl, 1 Y/O, P 2 tog. Next R: P1 + K1 through the Y/O. **NOTE!** The first buttonhole is worked on the 5th R after the division and the final buttonhole is worked on the neckline.

Continue decreasing for raglan as before, every 2nd R (PM before the last 8 sts on R and work the final raglan decreases on the left sleeve before the m). Continue working and decreasing until 68 (68) 72 (76) sts remain.

NECKLINE AND ASSEMBLY

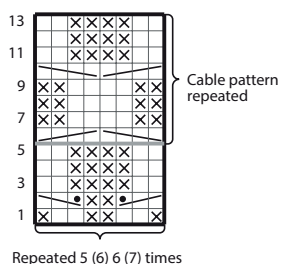
Change to 4 mm needles and work 4 cm twisted rib flat (P1, K1 tbl) inside the edge st on each side.

If you want to, you can adjust your st count so the rib continues unbroken into the neckline from the side sts on the front and back pieces.

Work until the neckline measures 3 (4) 4 (5) cm and **remember the final buttonhole**. Cast off loosely with rib sts. Join underarm seams and sew down the button band on the front piece below the buttonhole band. Sew on the buttons.



DIAGRAM



- K from RS, P from WS
- ⊗ P from RS, K from WS
- ☞ Place 1 st on cable needle held behind the piece, K2, P st from cable needle
- ☜ Place 2 sts on cable needle held in front of the piece, P1, K sts from cable needle
- ☞ Place 2 sts on cable needle held in front of the piece, P2, K sts from cable needle
- ☜ Place 2 sts on cable needle held behind the piece, K2, P sts from cable needle

Do you need inspiration for your next knitting project? Check out the website houseofyarn.no