



DU STORE  
**ALPAKKA**<sup>®</sup>

HOUSE of YARN

# LILLE LOTTA DRESS

DSA 47-01C | MINI STERK



DSA 47-01C

## LILLE LOTTA DRESS

### DESIGN

Hrönn Jónsdóttir

### YARN

MINI STERK 40 % finest alpaca, 40 % merino wool, 20 % nylon, 50 grams = approx. 166 metres

**Alternative yarn:** ALPAKKA WOOL

### SIZES

0–3 (6) 9–12 months (2) 4 years

**NOTE!** See MEASUREMENTS to find the right size

### MEASUREMENTS

Upper body approx. 47 (51) 56 (60) 62 cm

Full length approx. 32 (38) 43 (47) 52 cm

Sleeves approx. 16 (17) 19 (24) 27 cm

### YARN REQUIREMENTS

Colour 1	5 balls
Colour 2	1 ball in all sizes
Colour 3	1 ball in all sizes
Colour 4	1 ball in all sizes

### COLOURS

Colour 1	Mottled Light Brown 823
Colour 2	Mottled Light Grey 841
Colour 3	Anthracite 807
Colour 4	Yellow Saffron 858

### SUGGESTED NEEDLES

2.5 and 3 mm short and long circular needles and DPNs  
3 mm crochet hook

### ACCESSORIES

1 button

### GAUGE

27 sts stocking st and colourwork on 3 mm needles = 10 cm

**Check your gauge by working a swatch.**

**Count the number of sts per 10 cm. If you have more sts than suggested, change to a larger needle size. If you have fewer sts change to a smaller needle size.**

### FIND THE RIGHT SIZE

1. Measure a knitted garment that fits.
2. Compare your measurements with those in the pattern.
3. Select a size based on the upper body measurements.
4. Body and sleeves may be worked longer or shorter as needed.



### ABBREVIATIONS

k = knit, p = purl, st = stitch, R = round/row,  
DPN = double pointed needles, k2tog = knit 2 together,  
m = marker, PM = place marker, m1 = make one (make a new st), m1l = make one left, m1r = make one right,  
RS/WS = right/wrong side

### SKIRT

Cast on 252 (276) 300 (324) 336 sts with colour 2 on 2.5 mm circular needles. Work 9 (9) 9 (11) 11 R of stocking st in the round. Change to colour 1, K 1 R, P 1 R (= folding edge, you will measure the piece from here). Change to 3 mm needles and work pattern according to diagram **A** (11 R). **NOTE!** Any R marked with an arrow in the diagram is only worked for sizes 2 years and 4 years. Change to colour 1, K 1 R, P 1 R. Continue working stocking st until the piece measures 18 (23) 27 (28.5) 32.5 cm. K2 tog across 1 R = 126 (138) 150 (162) 168 sts. PM in each side with 63 (69) 75 (81) 84 sts for the front and back pieces. R begins on the left-hand side.

#### © House of Yarn AS

The copying and publication of materials and patterns, or their use for commercial purposes, is not allowed without prior agreement with House of Yarn AS.

P 1 R and then work pattern according to diagram **A**. Now K 1 R and P 1 R using colour 1. **NOTE!** On the last R of P, decrease 1 st on each side for size 4 years (no decreases for other sizes). Then work pattern according to diagram **C** across the middle 11 sts on the front piece and stocking st as before across all other sts. Work until the piece measures 1 cm from the last R of P. Cast off 6 sts on each side (= 3 sts on each side of each m). Finish the front and back pieces separately.

**BACK PIECE** = 57 (63) 69 (75) 77 sts.

Work stocking st flat and continue casting off for armholes at the beginning of every other R: 2,1 (2,1) 2,2,1 (2,2,1) 2,2,1 sts on each side = 51 (57) 59 (65) 67 sts. Work until the armhole measures 4 (4) 5 (5) 6 cm. Cast off the middle 5 sts on the R for a split, and finish each side separately. **Left side** = 23 (26) 27 (30) 31 sts: M1 inside each edge st by the split every 1 (1) 1 (1.5) 1.5 cm a total of 2 times = 25 (28) 29 (32) 33 sts. Work until the armhole measures 8 (9) 10 (11) 12 cm. Cast off the first 10 (11) 12 (13) 14 sts by the split and then, on every other R: 2,1,1 sts. Work until the armhole measures 10 (11) 12 (13) 14 cm and cast off the remaining 11 (13) 13 (15) 15 sts. Work the right side in the same way but in reverse (work neck decreases at the beginning of a WS R).

**FRONT PIECE** = 57 (63) 69 (75) 77 sts.

Continue working flat, with stocking st and diagram **C** as before, and cast off for armholes on each side in the same way as on the back pieces = 51 (57) 59 (65) 67 sts. Work until the armhole measures 6 (7) 7 (8) 9 cm. **NOTE!** Repeat diagram **C** a total of 2 (2) 3 (3) 3 times vertically. When you have worked all the pattern repeats, work stocking st across all sts. Cast off the middle 15 (17) 19 (21) 23 sts for the neckline and finish each side separately. **Left side:** Continue casting off for the neckline every 2nd R: 3,2,1,1 sts (same for all sizes). Work until the armhole measures 10 (11) 12 (13) 14 cm and cast off the remaining 11 (13) 13 (15) 15 sts. Work the right side in the same way but in reverse. Join the shoulder seams.

## NECKLINE

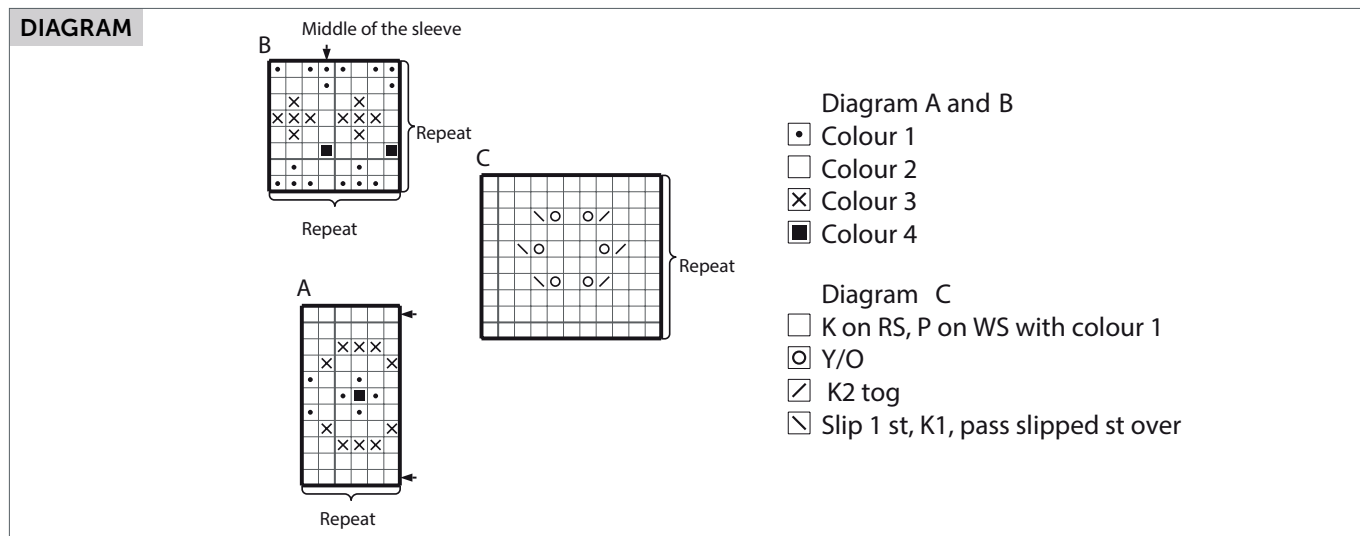
Begin at the bottom of the split at the back and pick up approx. 14 sts per 5 cm around the neckline, using 2.5 mm short circular needles and colour 1. Work 4 R stocking st in the round and then cast off.

## SLEEVES

Cast on 42 (42) 48 (48) 48 sts with colour 2 and 2.5 mm DPNs. Work 9 (9) 9 (11) 11 R of stocking st in the round. Change to colour 1, K 1 R, P 1 R (= folding edge, you will measure the sleeve from here). Change to 3 mm needles and work pattern according to diagram **A** (11 R). **NOTE!** Any R marked with an arrow in the diagram is only worked for sizes 2 years and 4 years. Change to colour 1, K 1 R, P 1 R, K 1 R. Increase 2 underarm sts (**m1l** after the first m and **m1r** before the last m on R). Repeat the increases every 1.5 (1) 1.5 (1) 1.5 cm until you have 52 (56) 62 (68) 72 sts on your needles. Work until the sleeve measures 16 (17) 19 (24) 27 cm. Cast off 6 underarm sts and continue working flat. PM in the middle of the sleeve to measure from. Continue casting off on every side, every other R: 2 (2) 2,2 (2,2) 2,2 sts, then 1 st on every side, every other R until the sleeve measures 6 (7) 8 (9) 10 cm from m. Now cast off on each side every other R: 2,2 sts (same for all sizes) and then cast off all remaining sts. Work the other sleeve in the same way.

## ASSEMBLY

Sew in the sleeves, making sure the middle of the sleeve meets the shoulder seam. Fold edge at the bottom of the sleeves to WS and sew down with loose sts. Fold edge to WS and sew down with loose sts. Using a 3 mm crochet hook, make a loop by working 4 ch sts with colour 1, then sew it onto the right-hand side of the split. Sew a button onto the opposite side. Fold edge at the bottom of the skirt to WS and sew down with loose sts.



Do you need inspiration for your next knitting project? Check out the website [houseofyarn.no](http://houseofyarn.no)