



# HEART JUMPER FOR CHILDREN

DSA 73-51 | ALPAKKA TWEED CLASSIC



Du Store Alpakka – a part of **HOUSE of YARN**

## HEART JUMPER FOR CHILDREN

### DESIGN

Monica Norseth

### INSTAGRAM

@tusenogen\_maske

### YARN

ALPAKKA TWEED CLASSIC 50 % alpaca, 30 % merino wool, 20 % Donegal, 50 grams = approx. 110 metres

**Alternative yarn:** STERK

### SIZES

2 (4) 6 (8) 10 (12) years

**NOTE!** See MEASUREMENTS to find the right size

### MEASUREMENTS

Upper body 64 (66) 72 (76) 80 (84) cm

Full length mid-front approx. 41 (44) 50 (54) 57 (59) cm

Sleeves 25 (27) 31 (35) 37 (39) cm

### YARN REQUIREMENTS

Colour 1 5 (6) 7 (8) 9 (10) balls

Colour 2 1 (1) 1 (1) 2 (2) balls

### COLOURS

Colour 1 Deep Red 116

Colour 2 Off-white 113

### SUGGESTED NEEDLES

3.5 and 4 mm short and long circular needles and DPNs

### GAUGE

22 sts stocking st on 4 mm needles = 10 cm

**Check your gauge by working a swatch.**

**Count the number of sts per 10 cm. If you have more sts than suggested, change to a larger needle size. If you have fewer sts change to a smaller needle size.**

### FIND THE RIGHT SIZE

1. Measure a knitted garment that fits.
2. Compare your measurements with those in the pattern.
3. Select a size based on the upper body measurements.
4. Body and sleeves may be worked longer or shorter as needed.

### ABBREVIATIONS

k = knit, p = purl, st = stitch, R = round/row,  
DPN = double pointed needles, m = marker,  
PM = place marker, m1l = make one left,  
m1r = make one right, RS/WS = right/wrong side



### BODY

Cast on 138 (146) 158 (166) 178 (186) sts with colour 1 on 3.5 mm circular needles. PM in each side with 69 (73) 79 (83) 89 (93) sts for both the front and back pieces. Work rib in the round (K1, P1) for 4 (4) 4 (5) 5 (5) cm. Change to 4 mm needles. Continue working stocking st until the sleeve measures 25 (28) 31 (34) 36 (38) cm. Cast off 10 sts on each side (= 5 sts on each side of each m) = 59 (63) 69 (73) 79 (83) sts on the front and back pieces. Set aside and work the sleeves.

### © House of Yarn AS

The copying and publication of materials and patterns, or their use for commercial purposes, is not allowed without prior agreement with House of Yarn AS.

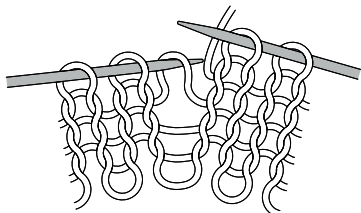


## SLEEVES

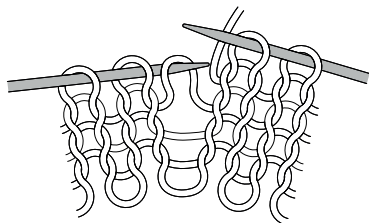
Cast on 36 (38) 40 (42) 44 (46) sts with colour 1 on 3.5 mm DPNs. Work rib in the round (K1, P1) for 4 (4) 4 (5) 5 (5) cm. Change to 4 mm needles. Continue with stocking st **while at the same time** on R 1, increasing 5 sts evenly spaced = 41 (43) 45 (47) 49 (51) sts. PM around the first and last sts on R = underarm m sts. Work until the sleeve measures 5 (5) 5 (6) 6 (6) cm. Increase by **m1l** after m sts and **m1r** before m sts. Repeat the increases every 3.5 (3) 2.5 (2.5) 2.5 (2.5) cm, 6 (8) 10 (11) 12 (14) times in total = 53 (59) 65 (69) 73 (79) sts. Work until the sleeve measures 25 (27) 31 (35) 37 (39) cm. Cast off 10 underarm sts (= m st + 4 sts on each side) = 43 (49) 55 (59) 63 (69) sts. Set aside and work the one more sleeve.

## M1R AND M1L

M1l: Pick up the strand between 2 sts, place it on left needle as shown in picture, work through the back loop.



M1r: Pick up strand between 2 sts, place it on left needle as shown in picture, work the front loop.



## YOKE

Place all pieces on 4 mm circular needles: Left sleeve, front piece, right sleeve, and back piece = 204 (224) 248 (264) 284 (304) sts.

R begins at the back of the left shoulder. Work 2 (2) 3 (3) 4 (4) cm of stocking st with colour 1, **while at the same time** on R 2 decreasing 18 (23) 32 (33) 38 (40) sts evenly spaced = 186 (201) 216 (231) 246 (264) sts. Work pattern and decreases according to diagram. Finish the piece with colour 1. Work 3 (3) 3.5 (4) 4 (4.5) cm of stocking st. Decrease 33 (34) 38 (39) 40 (41) sts evenly spaced on the next R = 108 (116) 124 (132) 140 (148) sts. Work 1 cm of stocking st and decrease 38 (42) 46 (50) 54 (58) sts evenly spaced on the next R = 70 (74) 78 (82) 86 (90) sts. Work 1 (1) 2 (2.5) 2.5 (2.5) cm of stocking st.

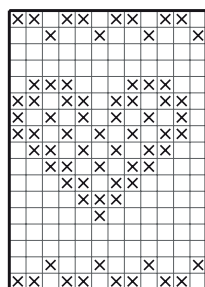
## NECKLINE

Change to 3.5 mm short circular needles and work 3 cm rib in the round (K1, P1). Cast off loosely with K and P sts.

## ASSEMBLY

Join underarm seams.

## DIAGRAM



← Decrease 24 (27) 30 (36) 42 (48) sts evenly spaced = 108 (117) 126 (132) 138 (144) sts

← Decrease 12 sts evenly spaced = 132 (144) 156 (168) 180 (192) sts

Repeat

□ Colour 1  
 ⊗ Colour 2

Do you need inspiration for your next knitting project? Check out the website [houseofyarn.no](http://houseofyarn.no)