



DU STORE  
**ALPAKKA**<sup>®</sup>

HOUSE of YARN

# HENRY JUMPER

DSA 104-18 | ALPAKKA TWEED & OLDER



Du Store Alpaka – a part of **HOUSE of YARN**



DSA 104-18

## HENRY JUMPER

### DESIGN

Mari Kalberg Skjæveland

### YARN

ALPAKKA TWEED 50 % alpaca, 30 % merino wool,  
20 % Donegal, 50 grams = approx. 80 metres  
OLDER 100 % wool, 50 grams = approx. 95 metres

### SIZES

2 (4) 6 (8) years

**NOTE!** See MEASUREMENTS to find the right size

### MEASUREMENTS

Upper body approx. 60 (65) 69 (74) cm  
Full length approx. 36 (40) 44 (48) cm  
Sleeves approx. 24 (27) 33 (36) cm or desired length

### YARN REQUIREMENTS

Colour 1	4 (4) 5 (6) balls
Colour 2	1 ball in all sizes
Colour 3	1 ball in all sizes
Colour 4	1 (1) 2 (2) balls
Colour 5	1 ball in all sizes

### COLOURS

Colour 1	ALPAKKA TWEED, Fir Green 132
Colour 2	ALPAKKA TWEED, Red 120
Colour 3	OLDER, Corn Yellow 417
Colour 4	OLDER, White 400
Colour 5	ALPAKKA TWEED, Brown 112

### SUGGESTED NEEDLES

4 mm and 5 mm long and short circular needles and DPNs

### GAUGE

17 sts x 25 R stocking st and colourwork on 4 mm needles  
= 10 x 10 cm

**Check your gauge by working a swatch.**

**Count the number of sts per 10 cm. If you have more sts than suggested, change to a larger needle size. If you have fewer sts change to a smaller needle size.**

### FIND THE RIGHT SIZE

1. Measure a knitted garment that fits.
2. Compare your measurements with those in the pattern.
3. Select a size based on the upper body measurements.
4. Body and sleeves may be worked longer or shorter as needed.

### ABBREVIATIONS

k = knit, p = purl, st = stitch, R = round/row, DPN = double pointed needles, Y/O = yarn over, K2tog = knit 2 together, m = marker, PM = place marker, tbl = through back loop, m1l = make one left, m1r = make one right, RS/WS = right/wrong side



**NOTE! Mind your knitting tension when working colourwork so it's not too tight.**

### BODY

Cast on 102 (110) 118 (126) sts with colour 1 on 4 mm circular needles. Work rib in the round (K1, P1) for 4 cm. PM in each side with 51 (55) 59 (63) sts for both the front and back pieces. Change to 5 mm needles and continue with stocking st. When the piece measures 23 (26) 29 (33) cm, cast off 8 sts for armholes on each side (= 4 sts on each side of each m) = 43 (47) 51 (55) sts on both the front and back pieces. Leave sts on needle and work the sleeves.

### © House of Yarn AS

The copying and publication of materials and patterns, or their use for commercial purposes, is not allowed without prior agreement with House of Yarn AS.

Photo: House of Yarn





## SLEEVES

Cast on 32 (34) 36 (38) sts with colour 1 on 4 mm DPNs. Work rib in the round (K1, P1) for 4 cm. PM around the first and last sts (= m sts). Change to 5 mm needles. Continue with stocking st. When the sleeve measures 7 cm, increase 1 st on each side of the m sts. Increase by **m1l** after the m sts **and m1r** before the m sts. Repeat the increases every 5.5 (6.5) 8.5 (7) cm a total of 3 (3) 3 (4) times = 38 (40) 42 (46) sts. Work until the sleeve measures 24 (27) 33 (36) cm or your preferred length. On the last R cast off 8 underarm sts (= m sts + 3 sts on each side) = 30 (32) 34 (38) sts. Lay aside and work one more sleeve in the same way.

## YOKE

Place left sleeve, front piece, right sleeve and back piece on 5 mm needles = 146 (158) 170 (186) sts. R begins between the back piece and left sleeve. Work 1 (1) 2 (2) R stocking st with colour 1, **while at the same time** increasing 11 (8) 5 (6) sts evenly spaced on R 1 = 135 (150) 165 (180) sts. Work pattern according to diagram.

**NOTE!** Count outwards from the middle st on the front piece where the diagram should begin. Adjust the beginning of the

R so you start with a complete pattern repeat.

When you have finished the diagram you will have 72 (70) 77 (84) sts on the needle. Continue with colour 4. PM in the middle of the back piece and work the piece higher at the back with stocking st as follows: Work 24 (26) 27 (29) sts past m, turn, work 1 **turning-st**, work 24 (26) 27 (29) sts past m, \*turn, work 1 **turning-st**, work 5 (6) 6 (7) sts less each time\*, repeat from \*-\* until you have turned 4 times on each side. Work 1 (1) 2 (3) R of stocking st, **while at the same time** decreasing 4 (0) 5 (8) sts evenly spaced = 68 (70) 72 (76) sts. **NOTE!** When working the turning-sts, work the two loops/legs of each turning st together as 1 st (this will not decrease st count).

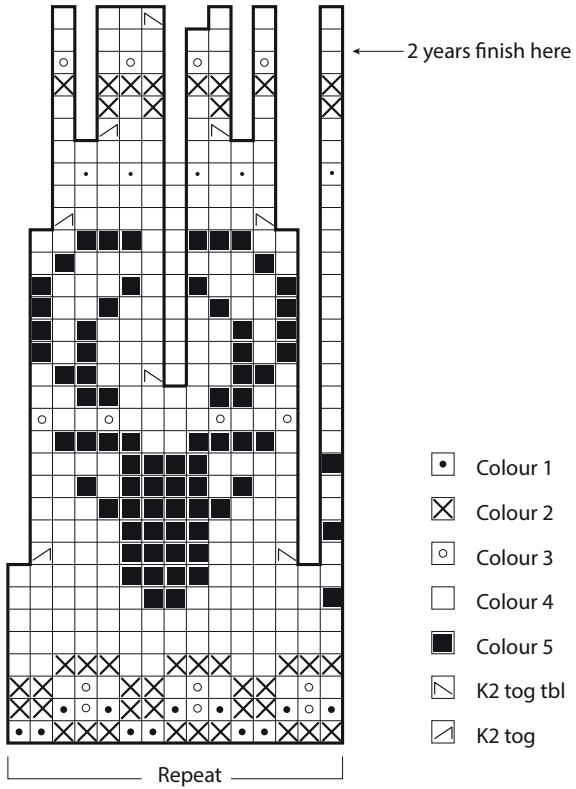
## NECKLINE

Change to 4 mm needles and colour 1. Work 1 R stocking st. Work 3 cm rib in the round (K1, P1). P 1 R (= folding edge). Work rib in the round (K1, P1) until the neck measures 6 cm. Cast off loosely with K and P sts.

## ASSEMBLY

Fold the neck double to the WS and sew down with loose stitches. Join underarm seams.

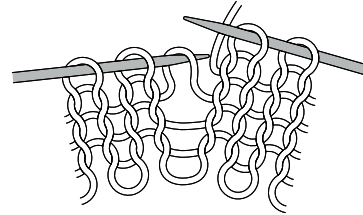
**DIAGRAM**



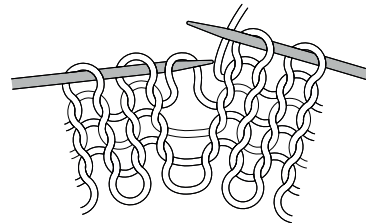
- ◻ Colour 1
- ⊗ Colour 2
- ◉ Colour 3
- ◻ Colour 4
- Colour 5
- ↘ K2 tog tbl
- ↙ K2 tog

**M1R AND M1L**

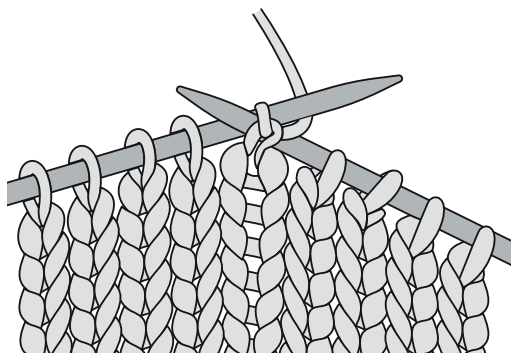
M1r: Pick up the strand between 2 sts, place it on left needle as shown in picture, work through the back loop.



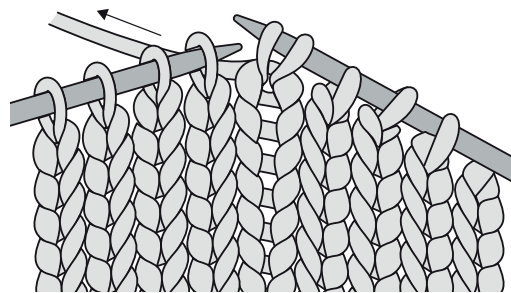
M1l: Pick up strand between 2 sts, place it on left needle as shown in picture, work the front loop.



**TURNING ST**



1 Turning st: Slip 1 st as if to P.



2 Pull st to back of right needle (tighten).

Do you need inspiration for your next knitting project? Check out the website [houseofyarn.no](http://houseofyarn.no)