



ICELANDIC JUMPER

DSA 109-03 | STERK



DSA 109-03

ICELANDIC JUMPER

DESIGN

Kari Haugen

YARN

STERK 40 % alpaca, 40 % merino wool, 20 % nylon,
50 grams = approx. 137 metres

Alternative yarns: ALPAKKA TWEED CLASSIC, ALPAKKA FORTE CLASSIC, LERKE, NATURAL LANOLIN WOOL, MERINO 22

SIZES

2 (4) 6 (8) 10 (12) years

NOTE! See MEASUREMENTS to find the right size

MEASUREMENTS

Upper body approx. 62 (65) 69 (73) 80 (87) cm

Full length approx. 31 (37) 41 (45) 48 (53) cm

Sleeves approx. 24 (27) 33 (36) 38 (40) cm

YARN REQUIREMENTS

Colour 1 3 (4) 4 (5) 6 (7) balls

Colour 2 (2) 3 (3) 3 (5) balls

COLOURS

Colour 1 Off-White 806

Colour 2 Green 812

SUGGESTED NEEDLES

3 mm and 4 mm long and short circular needles and DPNs

GAUGE

22 sts x 26 R stocking st and colourwork on 4 mm needles
= 10 x 10 cm

Check your gauge by working a swatch.

Count the number of sts per 10 cm. If you have more sts than suggested, change to a larger needle size. If you have fewer sts change to a smaller needle size.

FIND THE RIGHT SIZE

1. Measure a garment that fits.
2. Compare your measurements with those in the pattern.
3. Select a size based on the upper body measurements.
4. Body and sleeves may be worked longer or shorter as needed.

ABBREVIATIONS

k = knit, p = purl, st = stitch, R = round/row,
DPN = double pointed needles, K2tog = knit 2 together,
m = marker, PM = place marker, tbl = through back loop,
RS/WS = right/wrong side



STRIPE PATTERN

6 R with colour 1
2 R with colour 2
2 R with colour 1
2 R with colour 2
4 R with colour 1

BODY

Cast on 136 (144) 152 (160) 176 (192) sts with colour 1 on 3 mm circular needles.

Work rib in the round (K1, P1) and **stripe pattern**.

PM around 1 st in each side, with 67 (71) 75 (79) 87 (95) sts between m on both the front and back pieces.

Change to 4 mm needles and work according to diagram.

Begin by the first m st at the arrow for your selected size.

Work until the piece measures 21 (26) 29 (32) 35 (38) cm. On the last R, cast off 9 (9) 9 (9) 11 (11) sts for the armholes on each side (= marker sts + 4 (4) 4 (4) 5 (5) sts on each side) = 59 (63) 67 (71) 77 (85) sts on both the front and back pieces.

© House of Yarn AS

The copying and publication of materials and patterns, or their use for commercial purposes, is not allowed without prior agreement with House of Yarn AS.

Photo: House of Yarn



For patterns for Icelandic Jumpers for the whole family, see DSA 109

SLEEVES

Cast on 36 (40) 40 (44) 44 (48) sts with colour 1 on 3 mm DPNs. Work rib in the round (K1, P1) and **stripe pattern**. Work 1 R stocking st with colour 1, **while at the same time** increasing 6 (4) 6 (4) 6 (4) sts evenly spaced = 42 (44) 46 (48) 50 (52) sts.

PM around the last st = m st, which is always worked with colour 1.

Change to 4 mm needles. Work pattern according to diagram. Count outwards from middle of sleeve to determine where the diagram should begin.

At the same time when the sleeve measures 8 cm, increase 1 st on each side of the m st. Repeat the increases every 2.5 cm, 6 (7) 8 (9) 10 (11) times in total = 54 (58) 62 (66) 70 (74) sts. Work until the sleeve measures approx. 24 (27) 33 (36) 38 (40) cm. **NOTE!** Finish on the same R as on the body.

At the same time on the last R, cast off 9 (9) 9 (9) 11 (11) underarm sts (= m st + 4 (4) 4 (4) 5 (5) sts on each side) = 45 (49) 53 (57) 59 (63) sts.

Work the other sleeve in the same way.

YOKE

Place the left sleeve, front piece, right sleeve, and back piece on 4 mm circular needles = 208 (224) 240 (256) 272 (296) sts. R begins between the back piece and left sleeve. PM around the first and last sts on the front and back pieces = 4 m sts. Always P m sts with colour 1.

Continue with pattern according to diagram on each piece. On R 3, decrease for raglan by K2 tog tbl before each m and K2 tog after each m. Work decreases with the colour which fits best with where you are in the pattern.

Repeat the raglan decreases every 2nd R, 13 (14) 15 (16) 17 (19) times in total = 104 (112) 120 (128) 136 (144) sts. Cut yarn.

Place the middle 9 (11) 13 (13) 15 (17) sts on the front piece on a st holder for the neckline.

Work flat with raglan decreases on every other R as before, **while at the same time** casting off for neckline at the beginning of each R, 2 sts on each side 2 times, then 1 st on each side until the raglan decreases meet the neckline.

NOTE! Make sure you work the raglan decreases from the RS. Leave sts on the needle.

ASSEMBLY

Join underarm seams.

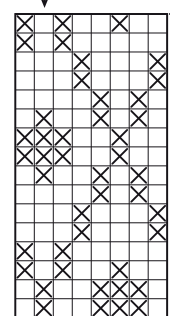
NECKLINE

Place yoke sts on 3 mm circular needles. **At the same time**, pick up approx. 11 sts per 5 cm with colour 1 around the neckline. St count must be divisible by 2. Work rib in the round (K1, P1) and stripes as follows: 3 cm with colour 1, 2 cm with colour 2, 2 cm with colour 1.

Cast off loosely. Fold the edge double to the WS and sew down with loose stitches.

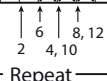
DIAGRAM

In the middle of the sleeve



Repeat

- Colour 1
- Colour 2



Do you need inspiration for your next knitting project? Check out the website houseofyarn.no