



DALE[®]
GARN

HOUSE of YARN

SETESDAL CARDIGAN

DG 479-06 | SOFT MERINO



DG 479-06

SETESDAL CARDIGAN

DESIGN

Ane Kydland Thomassen

YARN

SOFT MERINO 100 % extra fine merino wool,
50 grams = approx. 187 metres

Alternative yarn: BABY ULL

SIZES

6 months (1) 2 (4) 6 (8) 10 (12) years

NOTE! See MEASUREMENTS to find the right size

MEASUREMENTS

Upper body approx. 58 (61) 64 (69) 74 (80) 87 (96) cm

Full length approx. 27 (28) 30 (33) 36 (39) 42 (44) cm

Sleeves approx. 17 (19) 23 (26) 32 (35) 37 (39) cm

YARN REQUIREMENTS

Colour 1	2 (3) 3 (4) 4 (5) 6 (7) balls
Colour 2	1 (1) 1 (2) 2 (2) 2 (3) balls
Colour 3	1 ball in all sizes
Colour 4	1 ball in all sizes
Colour 5	1 ball in all sizes
Colour 6	1 ball in all sizes

COLOURS

Colour 1	Black 3023
Colour 2	Off-White 3019
Colour 3	Pink 3028
Colour 4	Bright Green 3030
Colour 5	Orange 3033
Colour 6	Corn Yellow 3008

SUGGESTED NEEDLES

2.5 mm and 3 mm long and short circular needles and DPNs
3 mm long circular needles

ACCESSORIES

1 zip

GAUGE

27 sts x 32 R stocking st in pattern on 3 mm needles
= 10 x 10 cm

Check your gauge by working a swatch. Count the number of sts per 10 cm. If you have more sts than suggested, change to a larger needle size. If you have fewer sts change to a smaller needle size.



For the adult Setesdal cardigan pattern see
DG 467-01 on houseofyarn.no

For a free pattern for children's Setesdal jumper see
DSA 121-08 on houseofyarn.no

FIND THE RIGHT SIZE

1. Measure a knitted garment that fits.
2. Compare your measurements with those in the pattern.
3. Select a size based on the upper body measurements.
4. Body and sleeves may be worked longer or shorter as needed.

ABBREVIATIONS

k = knit, p = purl, st = stitch, R = round/row(s),
DPN = double pointed needles, K2 tog = knit 2 together,
tbl = through back loop, m = marker, PM = place marker,
RS/WS = right/wrong side

© House of Yarn AS

The copying and publication of materials and patterns,
or their use for commercial purposes, is not allowed
without prior agreement with House of Yarn AS.



FRONT AND BACK PIECES

Cast on 144 (152) 160 (176) 188 (204) 224 (248) sts with colour 1 on 2.5 mm needles.

Work a rib back and forth for 3 (4) 4 (4) 5 (5) 5 (5) cm as follows: (R 1 = WS)

WS: P1, *P2, K2*, repeat from *-* , finish with P3.

RS: K1, *K2, P2*, repeat from *-* , finish with K3.

NOTE! Tighten the first and last sts well. Finish with a WS R.

Change to 3 mm needles and K 1 R from RS, **while at the same time** decreasing 1 (1) 1 (3) 3 (1) 3 (1) sts evenly spaced = 143 (151) 159 (173) 185 (203) 221 (247) sts. PM around 1 st in each side (= side m st) with 77 (81) 85 (91) 97 (107) 115 (129) sts on the back piece and 32 (34) 36 (40) 43 (47) 52 (58) sts on each front piece. Cast on 5 sts at end of R (= steeking sts, not included further in pattern or st count). Continue working stocking st in the round and in pattern according

to diagram **A**. Begin at the arrow for your chosen size on the right front piece, the back piece, and the left front piece. M sts are always P with the colour which fits the pattern best, and are not counted as part of the diagram.

On the last R of the diagram, cast off the m sts on each side = 77 (81) 85 (91) 97 (107) 115 (129) sts on the back piece and 32 (34) 36 (40) 43 (47) 52 (58) sts on each front piece. Work until the piece measures approx. 16 (17) 18 (20) 22 (24) 26 (27) cm. **NOTE!** Make sure the final pattern repeat is evenly aligned with the corresponding repeat further down in the diagram.

Work 1 R with colour 1, **while at the same time** casting on 3 sts on each side (= steeking sts, not included further in pattern or st count).

Continue with pattern according to diagram **B1 (B1) B1 (B1) B2 (B2) B2 (B2)**. Begin at the arrow for your chosen size for each part.

At the arrow for the neckline cast-off, cast off the middle 15 (15) 17 (17) 19 (21) 21 (23) sts in front (= steeking sts + 5 (5) 6 (6) 7 (8) 8 (9) sts on each side). Continue working flat, and keep casting off for neckline at the beginning of each R on each side: 2,2,1,1,1 (2,2,1,1,1) 2,2,1,1,1 (3,2,1,1,1) 3,2,1,1,1 (3,2,1,1,1,1) 3,2,2,1,1,1 (3,2,2,1,1,1) sts on each side = 20 (22) 23 (26) 28 (30) 34 (39) sts for each front piece and 77 (81) 85 (91) 97 (107) 115 (129) sts for back piece.

Cast off. The middle 37 (37) 39 (39) 41 (47) 47 (51) sts in back = neckline.

SLEEVES

Cast on 44 (44) 44 (48) 48 (52) 52 (56) sts with colour 1 on 2.5 mm needles. Work a rib K2, P2 in the round for 3 (4) 4 (4) 5 (5) 5 (5) cm. Change to 3 mm needles and work 1 R stocking st, **while at the same time** increasing 3 (3) 5 (5) 7 (5) 9 (9) sts evenly spaced = 47 (47) 49 (53) 55 (57) 61 (65) sts. PM around the last st (= mid-underarm m st).

Continue with stocking st in the round and pattern according to diagram **C**. Count outwards from middle of sleeve to determine where the diagram should begin.

When the sleeve measures 4 (5) 5 (5) 6 (6) 6 (6) cm, increase 1 st on each side of the m st. Increase by **m1r** before m st and **m1l** after m st. Repeat the increases every 2 cm, 6 (7) 8 (9) 11 (12) 13 (14) times i total = 59 (61) 65 (71) 77 (81) 87 (93) sts. The new sts are worked into the pattern as you go. When you've worked the full diagram, the sleeve measures approx. 17 (19) 23 (26) 32 (35) 37 (39) cm. Cast off with colour 2. **NOTE!** We recommend trying on the cardigan so you can make any required adjustments to sleeve length. If you want a lining to cover the steeking edge, continue working flat as follows: Change to colour 1 and work 1 R stocking st (K on RS, P on WS), then work reverse stocking st (K on WS, P on RS) for 2 cm. Cast off.

Work one more sleeve in the same way.

ASSEMBLY

Using a sewing machine, sew 2 seams with small sts on each side of the middle steeking st in front, and in each side. Cut up between the seams. Graft the shoulder seams together

with mattress sts. Sew in the sleeves with mattress st.
If applicable, sew down the lining.

FRONT EDGES/NECKLINE

NOTE! The bottom sts on the right and left front edges = edge sts.

Slip 1st edge st K-wise on each R, and K last st on each R (with both colours where 2 colours are used).

Pick up 59 (67) 67 (75) 83 (91) 99 (99) sts with colour 2 on 3 mm needles along the right front edge. Pick up a further 89 (89) 97 (97) 105 (105) 113 (113) sts around the neckline (take care you have the same number of sts on each side of mid-back), then 59 (67) 67 (75) 83 (91) 99 (99) sts along the left front edge. **NOTE!** It's important that you pick up the same amount, evenly spaced on both front edges, so that the pattern matches up. If you have more sts at the bottom of one side, and more at the top on the other side, the front edges won't look straight.

PM around the topmost st on the left front edge, and the topmost st on the right front edge. M sts are always worked in stocking st with colour 2 or colour 3. Work flat and in pattern according to diagram **D**, inside 1 edge st on each side. (Begin the diagram again after each m st).

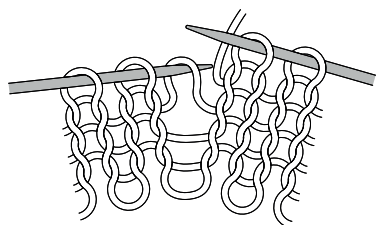
At the same time on the first RS R, increase on each side of the 2 m sts as follows: **m1r** before each m st and **m1l** after each m st. The new sts are worked into the pattern as you go. Decrease for raglan on each R from RS.

Change to 2.5 mm needles and K 1 R from the RS with colour 2, **while also** repeating the increases one more time. K 1 R from the WS (= folding edge). Continue with stocking st for lining, **while at the same time** working decreases corresponding to the increases on every RS R: K2tog tbl before each m and K2tog after each m. Work until the lining is as long as the front edge.

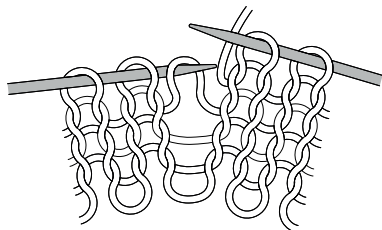
Sew down the lining on the WS. Sew in the zip.

M1R AND M1L

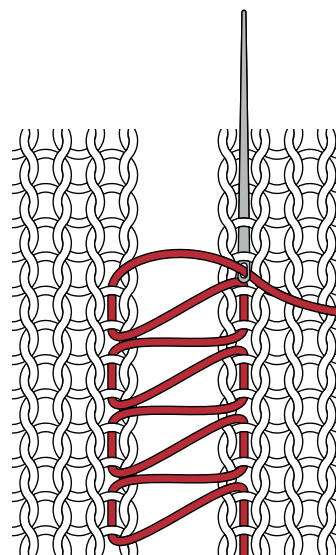
M1l: Pick up the strand between 2 sts, place it on left needle as shown in picture, work through the back loop.



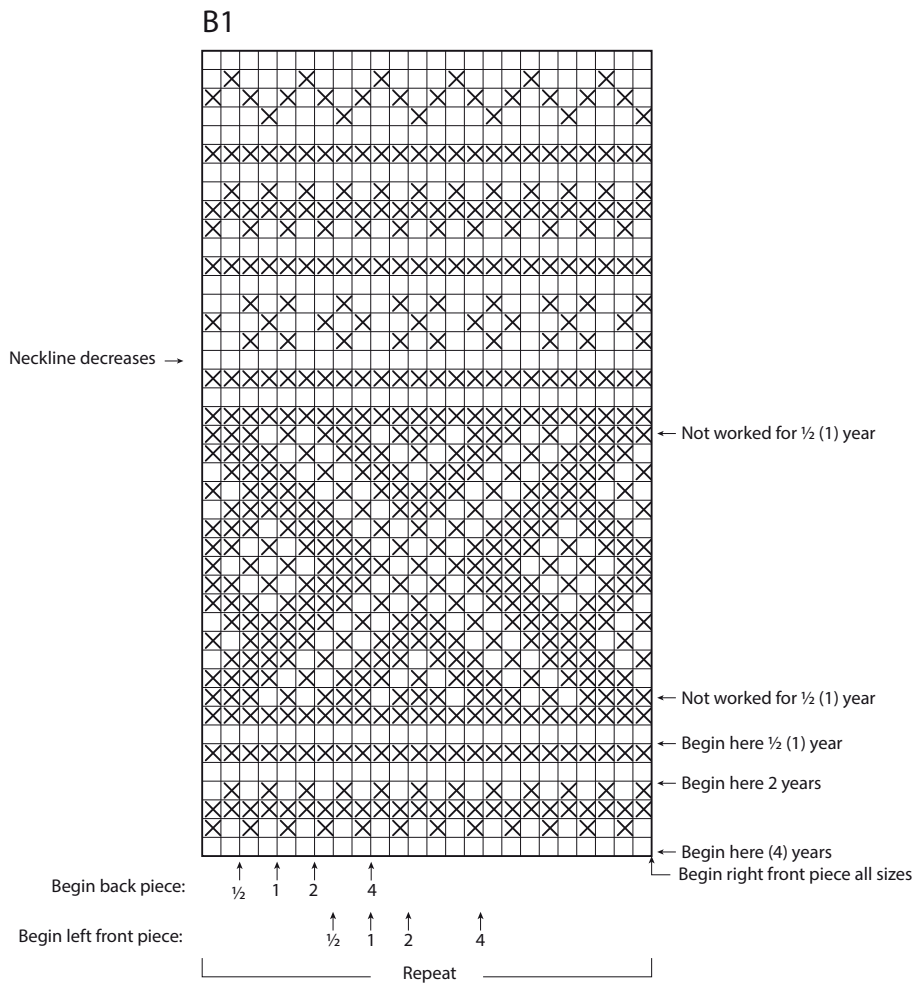
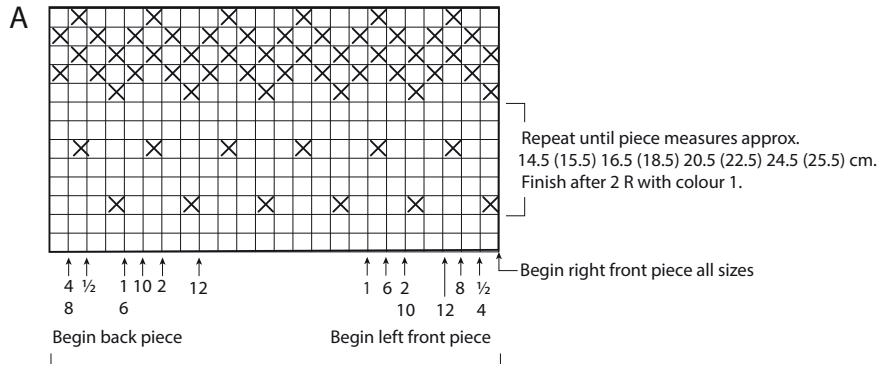
M1r: Pick up strand between 2 sts, place it on left needle as shown in picture, work the front loop.



MATTRESS ST



DIAGRAM



- Colour 1
- ⊗ Colour 2
- Colour 3
- ◐ Colour 4
- ▤ Colour 5
- ▥ Colour 6

DIAGRAM

B2

