



DALE[®]
GARN

HOUSE of YARN

TRULS BABY SET

DG 349-08 | BABY ULL



DG 349-08

TRULS BABY SET

DESIGN

Kari Haugen

YARN

BABY ULL 100 % superwash merino wool,
50 grams = approx. 165 metres

Alternative yarn: SOFT MERINO

SIZES

Cardigan, dungarees, bonnet, and socks

0–3 (6–9) 12–18 months

Mittens

3–6 (12–18) months

Bib

One Size

NOTE! See [MEASUREMENTS](#) to find the right size

MEASUREMENTS

Cardigan

Upper body approx. 52 (56) 60 cm

Full length approx. 27 (30) 34 cm

Sleeves approx. 16 (18) 20 (27) cm

Dungarees

Hips approx. 50 (54) 59 (55) cm

Inseam approx. 18 (22) 29 cm

YARN REQUIREMENTS

Cardigan

Colour 1 3 (4) 4 balls

Dungarees

Colour 1 3 (4) 5 balls

Bonnet, mittens, socks

Colour 2 2 balls in all sizes

Bib

Colour 2 1 ball

COLOURS

Colour 1 Mottled Beige 3841

Colour 2 Unbleached White 0020

SUGGESTED NEEDLES

2.5 mm and 3 mm circular needles

3 mm crochet hook for the edge on the bib

ACCESSORIES

2 buttons for the dungarees

6–8 buttons for the cardigan

1 button for the bonnet

GAUGE

27 sts moss st on 3 mm needles = 10 cm



Check your gauge by working a swatch. Count the number of sts per 10 cm. If you have more sts than suggested, change to a larger needle size. If you have fewer sts change to a smaller needle size.

FIND THE RIGHT SIZE

1. Measure a knitted garment that fits.
2. Compare your measurements with those in the pattern.
3. Select a size based on the upper body measurements.
4. Body and sleeves may be worked longer or shorter as needed.

ABBREVIATIONS

k = knit, p = purl, DPN = double pointed needles,
st = stitch, R = round/row(s), k2tog = knit 2 together,
m = marker, PM = place marker, tbl = through back loop,
RS/WS = right side/wrong side, Y/O = yarn over,
ss = slip stitch, ch st = chain stitch

MOSS ST

R 1: *K1, P1*, repeat from *-* to end of R.

R 2: K through P sts and P through K sts.

Repeat R 2.

© House of Yarn AS

The copying and publication of materials and patterns, or their use for commercial purposes, is not allowed without prior agreement with House of Yarn AS.



CARDIGAN

RIGHT FRONT PIECE

Cast on 39 (42) 45 sts on 3 mm circular needles.
Work **moss st** flat. On R6 (WS) work a buttonhole as follows:
Work until 4 sts remain, K2 tog, Y/O, K to end of R.

Work 1 row **moss st**.

Continue as follows (R1 = WS): Work 18 (21) 24 sts in pattern according to diagram **A** as shown for your chosen size, then work diagram **B**. Make a new buttonhole every 4.5 cm.

When the piece measures 17.5 (19.5) 22.5 cm, increase for sleeve by casting on new sts at the beginning of every other R. Cast on 7 (7) 7 new sts, 5 (6) 7 times, then cast on 10 (8) 6 new sts 1 time = 84 (92) 100 sts. The new sts are worked in **moss st**.

When the piece measures approx. 23 (25.5) 29 cm, place the middle 11 (12) 13 sts on a st holder for the neckline. Cast off for the neckline on every other R: 2,2,1,1 sts = 67 (74) 81 sts.

Work until the piece measures 27 (30) 34 cm. PM = shoulder. Continue working the back piece and sleeve as follows:

Work **moss st** across all sts, **while at the same time** increasing 2,1 sts on every other R for the neckline = 70 (77) 84 sts.

Set aside and work the left front piece.

LEFT FRONT PIECE

Work in the same way as the right front piece but in reverse and without buttonholes. After the bottom edge, work pattern according to diagrams **C** and **D**.

After you have increased the 2,1 sts for the neckline: Cast on 22 (24) 26 sts for the back piece, and work the right front piece and sleeve with = 162 (178) 194 sts. **NOTE!** If the moss st pattern doesn't match up when the pieces are worked together, you can rectify it by working an extra R on one half.

Continue working **moss st** across all sts (sleeves and back piece). Place the work lying flat, with the back piece on top of the front piece and the shoulder m at the fold. Work until the back piece sleeve edge is the same length as the front piece sleeve edge.

On every other R, cast off on each side as many sts as you cast on for the sleeves = 72 (78) 84 sts.

Work until the back piece is the same length as the front piece. Cast off.

ASSEMBLY

Begin at the bottom of the sleeves, and graft the side and sleeve seams together. Move the sts from the st holder onto 2.5 mm circular needles, and pick up approx. 13–14 sts per 5 cm around the rest of the neckline. Your st count should match the moss st pattern from the edges mid-front.

Work **moss st** flat. When the edge measures 1 cm, work the last buttonhole. Work until the edge measures 2 cm. Cast off. Sew on the buttons.

DUNGAREES

RIGHT LEG

Cast on 43 (47) 51 sts on 2.5 mm circular needles.

Work rib (K1, P1) flat for 6 (7) 8 cm, finish with K1. Finish with a WS R.

Change to 3 mm needles and K across 1 R, **while at the same time** increasing 16 sts evenly spaced = 59 (63) 67 sts.

Continue working in pattern as follows (R1 from WS): Work 22 (24) 26 sts **moss st**, pattern according to diagram **E**, and 22 (24) 26 sts in moss st. When the piece measures 7 (8) 9 cm, increase 1 st on each side. Repeat the increases every cm, 9 (12) 14 more times = 79 (89) 97 sts. The new sts are worked in moss st.

When the piece measures 18 (22) 29 cm, cast off 1 st on each side. Repeat the decreases every 2nd R, 5 (7) 8 times in total = 69 (75) 81 sts.

Work until the piece measures 33 (38) 46 cm. Finish with a RS R.

Make the dungarees longer in the back as follows:

First st on next R = mid-back. Work 8 (9) 8 sts.

Turn, slip 1 st, and work to end of R. Work 16 (18) 16 sts.

Turn, slip 1 st, and work to end of R. Work 24 (27) 24 sts.

Turn, slip 1 st, and work to end of R.

The 2 smallest sizes finish here.

Size 12–18 months is finished as follows:

Work 32 sts. Turn, slip 1 st, and work to end of R.

Leave sts on needle and work the left leg.

LEFT LEG

Work in the same way as the right leg, until it's time to make it longer in the back. Work in the same way as the right leg, but on the opposite side.



BODY

Join the seams on each leg, and then join the 2 pieces in front and in back. Place all sts on 2.5 mm circular needles. K 1 R, **while at the same time** decreasing as follows: K2tog (1 st from each piece) mid-front and mid-back, **while at the same time** decreasing 9 sts evenly spaced across the front and back pieces = 118 (130) 142 sts.

Work rib in the round (K1, P1). PM mid-front and mid-back. When the rib measures 7 (8) 9 cm, work 2 buttonholes in front with approx. 10 (11) 12 cm between them. K2 tog, Y/O for each buttonhole. Continue working rib (K1, P1). When the rib measures 9 (10) 11 cm, work 2 more buttonholes directly over the first 2. (The buttonholes will meet when the rib is folded double.)

Cast off loosely with K and P sts.

Fold the rib double to the inside and sew down with loose stitches. Sew buttonhole sts around the buttonholes if you wish.

STRAPS

Leave a space of approx. 3 (4) 5 cm between the straps in the back. Pick up 8 (8) 9 sts from the folded edge for each strap, and work **moss st** flat for 19 (20) 24 cm (or your preferred length). Cast off. Sew on the buttons.

BONNET

Cast on 27 sts on 3 mm circular needles.

Work flat in pattern according to diagram **F** for your chosen size. (R 1 = WS)

Move sts to a st holder, and PM in the middle of each long side of the piece = mid m.

Pick up 20 (26) 30 sts evenly spaced on each side of one mid m = 40 (52) 60 sts.

(R1 = WS) K1, P1 across 18 (24) 28 sts, then K1, P2 across 3 sts, and finally K1, P1 to end of R.

Continue working **moss st** across all sts except the 2 middle sts, which are worked in stocking st. **At the same time**, on every RS R, decrease 1 st on each side of the 2 middle sts. Decrease with K2tog before the 2 middle sts, and K2tog tbl after the 2 middle st. Continue until 4 sts remain. P 1 R from the WS. Work the next R as follows: K2 tog, K2 tog tbl = 2 sts. Cast off. Turn the bonnet, and work the other side in the same way.

EDGE AROUND THE HEAD

Use 2.5 mm needles. Pick up approx. 12–13 sts per 5 cm on each side, and K the sts from the st holder. St count should be divisible by 2+1.

Work a rib (K1, P1) for 3 (4) 4 cm. (Begin and finish with K1 on RS.) Cast off.

Fold the edge double to the RS and sew down the short edges on both sides.

EDGE AROUND THE NECK

Use 2.5 mm needles. Pick up approx. 12 sts per 5 cm around the neck (including along the short edges of the folded edge), and cast on a further 16 (18) 20 sts for a chin strap.

K1, P1 across all sts, **while at the same time** on R1 decreasing 3 sts evenly spaced mid-back, along the end of pattern **F**, by K2tog or P2tog 3 times.

When the edge measures 1 cm, make 1 buttonhole by K2tog, Y/O inside the 3 outermost sts at the end of the strap. Work until the edge measures 3 cm. Make one more buttonhole, directly over the first one. Work until the edge measures 4 cm. Cast off.

Fold the strap double, RS to RS, and sew together. Turn inside out, so the RS faces out. Sew the edge down to the WS of the bonnet with loose sts.

Sew buttonhole st around the buttonholes if you wish. Sew on the button.

SOCKS

Cast on 41 (47) 53 sts on 2.5 mm circular needles.

Work a rib (K1, P1) flat for 5 (6) 7 cm. (Begin and finish with K1 on RS.)

Place 14 (16) 18 sts from each side on a st holder. Change to 3 mm needles and work **moss st** for 4 (5) 6 cm across the middle 13 (15) 17 sts. Place all sts on needles, and pick up 10 (12) 14 sts on each side of the middle sts = 61 (71) 81 sts.

Work **moss st** across all sts for 2.5 (3) 3.5 cm. Cast off the first and last 25 (29) 33 sts = 11 (13) 15 sts left for the sole.

Work **moss st** across remaining sts for 6.5 (7.5) 9 cm.

Cast off 1 st at beginning of each R until 7 (9) 11 sts remain.

Cast off. Sew the sock together. Work the other sock in the same way.

BIB

Work flat as follows:

Cast on 171 sts on 3 mm circular needles.

K 1 R from the WS. Work eyelets on the next R as follows:

K2 together, Y/O, repeat from *-* to end of R, finish with K1. K 1 R from the WS.

Work pattern according to diagram **G** = 73 sts.

K 1 R from the WS, then eyelets as before.

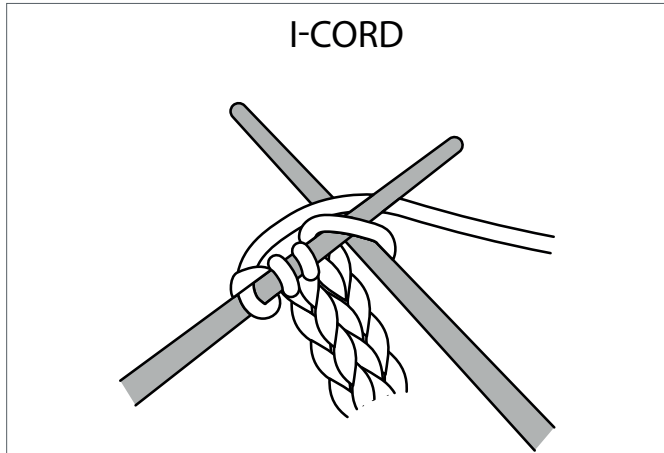
Cast off.

Crochet an edge with a 3 mm hook through the eyelet R at the bottom as follows: Crochet 1 ss through the 1st eyelet, *4 ch st, 1 ss through the next eyelet*, repeat from *-*.

I-CORD

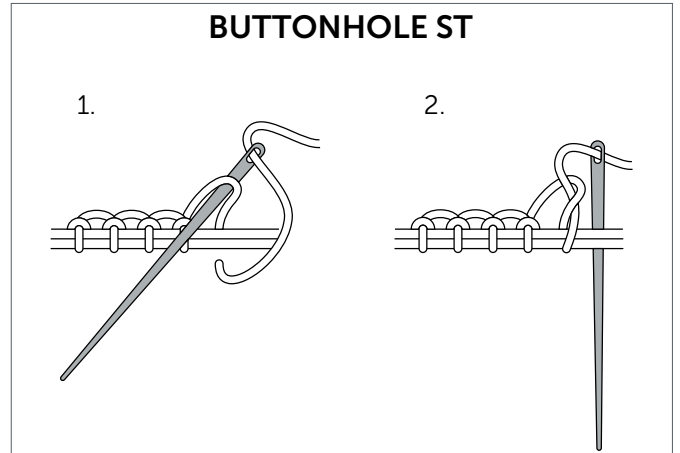
Cast on 3 sts with 2.5 mm DPNs and work in the round as follows: K3, *push sts to the right-hand end of the needle, tighten the working yarn at the back and K3*, repeat from *-* until it's long enough. Cast off.

Pull the I-cord through the row of eyelets at the top of the bib.

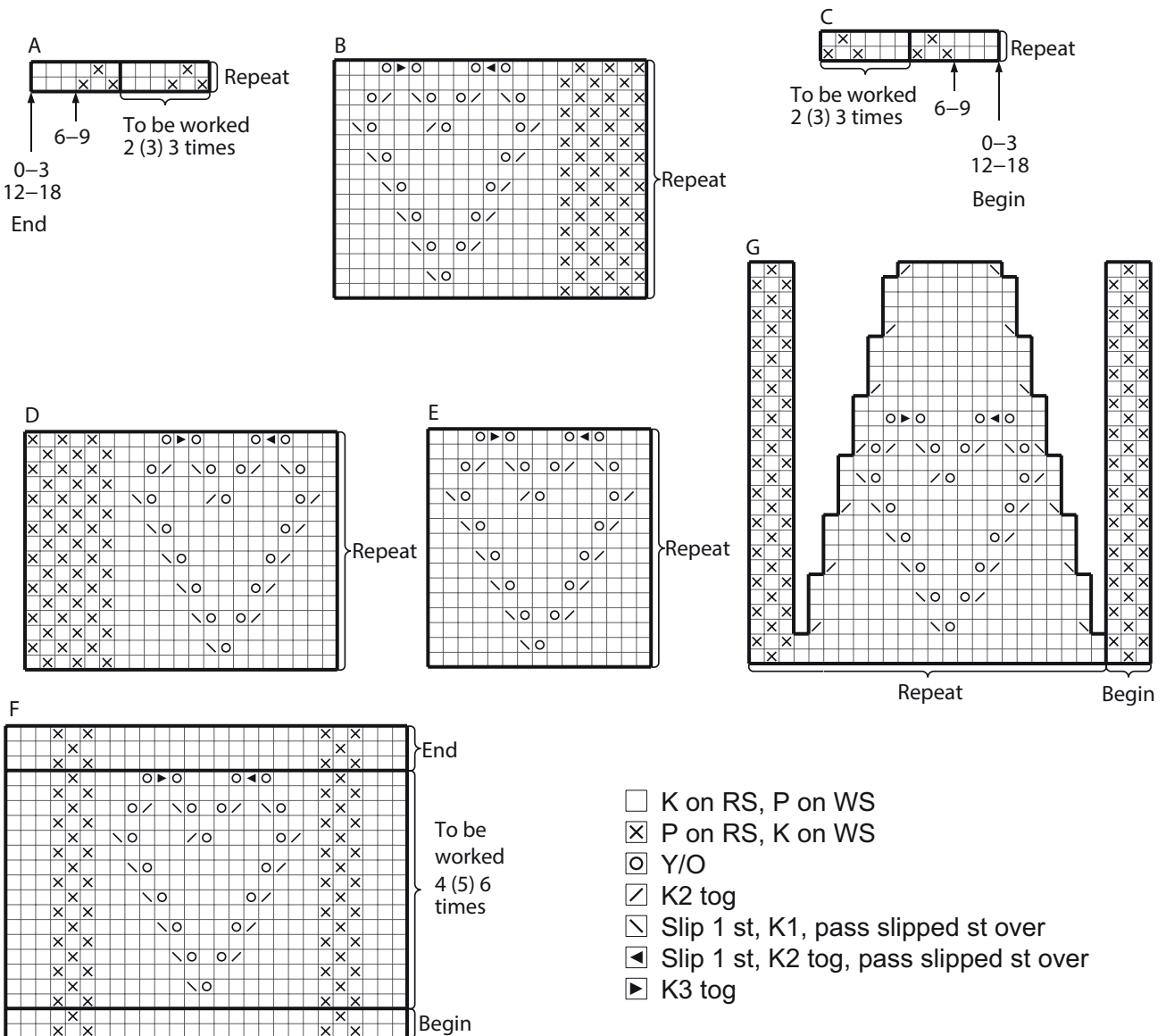


MITTENS

Cast on 34 (38) sts on 2.5 mm needles. Work a rib (K1, P1) flat for 5 (6) cm. Change to 3 mm needles and work pattern according to diagram **H (I)**. Sew the mitten together. Work the other mitten in the same way but with pattern according to diagram **J (K)**.

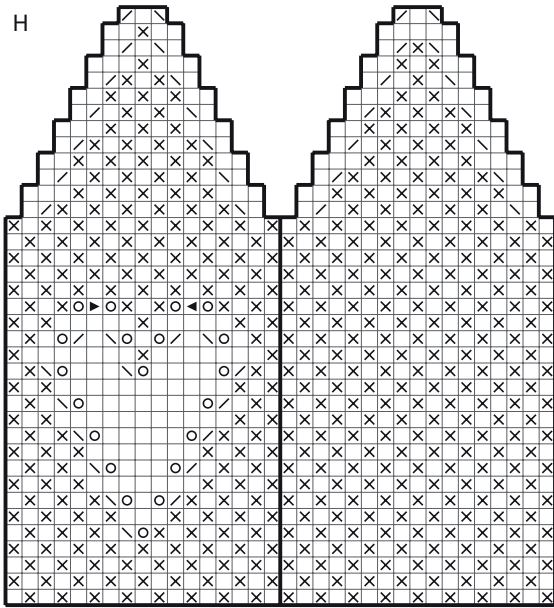


DIAGRAM

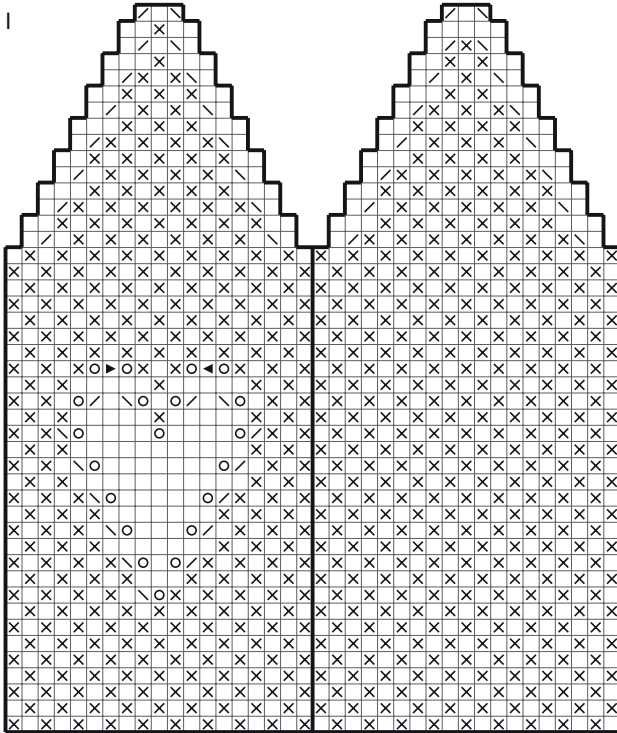
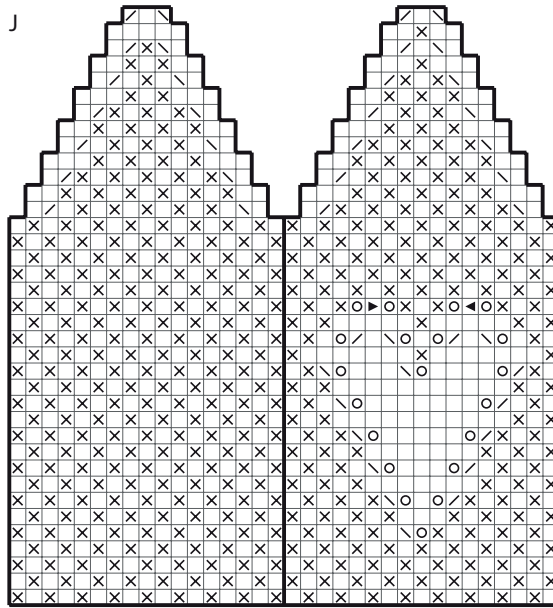


DIAGRAM

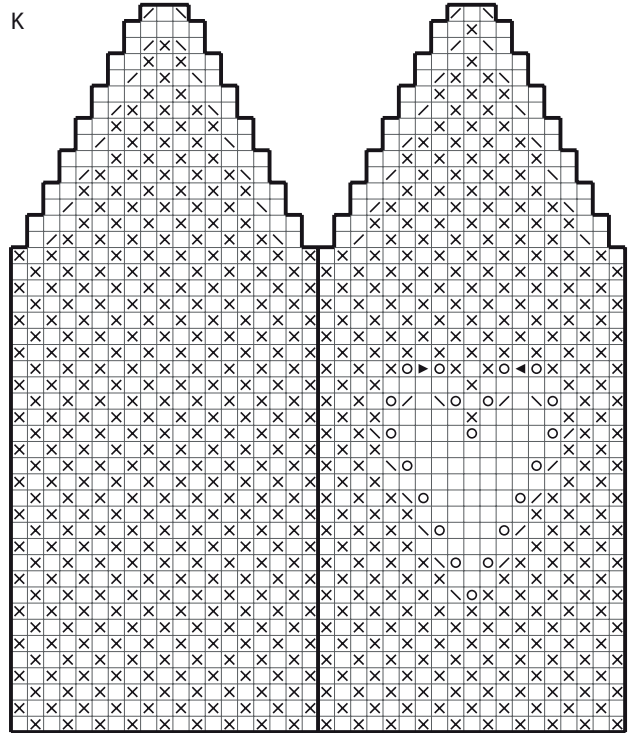
H



J



K



- K on RS, P on WS
- ⊗ P on RS, K on WS
- Y/O
- ↗ K2 tog
- ↘ Slip 1 st, K1, pass slipped st over
- ◀ Slip 1 st, K2 tog, pass slipped st over
- ▶ K3 tog

Do you need inspiration for your next knitting project? Check out the website houseofyarn.no