



BYKLE TROUSERS & WAISTCOAT

DSA 121-10 | ALPAKKA WOOL, BABY ULL & MINI STERK



BYKLE TROUSERS & WAISTCOAT

DESIGN

Brit Frafjord Ørstavik

YARNS

ALPAKKA WOOL 60 % finest alpaca, 40 % merino wool,
50 grams = approx. 166 metres

BABY ULL 100 % superwash merino wool,

50 grams = approx. 165 metres

MINI STERK 40 % finest alpaca, 40 % merino wool,
20 % nylon, 50 grams = approx. 166 metres

SIZES

6 months (1) 2 (4) 6 (8) years

NOTE! See MEASUREMENTS to find the right size

MEASUREMENTS

Trousers

Waist approx. 49 (52) 55 (58) 61 (64) cm

Inseam approx. 17 (19) 22 (26) 30 (34) cm

Waistcoat

Upper body approx. 50 (54) 58 (60) 64 (68) cm

Full length approx. 20 (22) 24 (28) 30 (34) cm

YARN REQUIREMENTS

Trousers

Colour 1 2 (2) 2 (3) 3 (3) balls

Colour 2 1 ball in all sizes, or scrap yarn

Colour 3 1 ball in all sizes, or scrap yarn

Colour 4 1 ball in all sizes, or scrap yarn

Colour 5 1 ball in all sizes, or scrap yarn

Colour 6 1 ball in all sizes, or scrap yarn

Waistcoat

Colour 1 (2) 2 (2) 2 (3) 3 balls

COLOURS

Colour 1 ALPAKKA WOOL, Mottled Anthracite 504

Colour 2 ALPAKKA WOOL, Off-White 501

Colour 3 BABY ULL, Pink 8534

Colour 4 BABY ULL, Bright Green 8536

Colour 5 MINI STERK, Orange 908

Colour 6 ALPAKKA WOOL, Corn Yellow 511

SUGGESTED NEEDLES

2.5 mm and 3 mm long circular needles and DPNs

3 mm short circular needles

ACCESSORIES

Trousers

Elastic

Waistcoat

5 (5) 5 (6) 6 (7) buttons



GAUGE

27 sts stocking st on 3 mm needles = 10 cm

Check your gauge by working a swatch. Count the number of sts per 10 cm. If you have more sts than suggested, change to a larger needle size. If you have fewer sts change to a smaller needle size.

FIND THE RIGHT SIZE

1. Measure a knitted garment that fits.
2. Compare your measurements with those in the pattern.
3. Select a size based on the upper body measurements.
4. Body and sleeves may be worked longer or shorter as needed.

ABBREVIATIONS

k = knit, p = purl, st = stitch, R = round/row(s),

DPN = double pointed needles, K2 tog = knit 2 together,

tbl = through back loop, m1/l/r = make one (new st) left/

right, Y/O = yarn over m = marker, PM = place marker,

RS/WS = right/wrong side

TROUSERS

Work top-down.

Cast on 132 (140) 148 (156) 164 (172) sts with colour 1 on 2.5 mm needles. Work 2 cm stocking st in the round, then P 1 R for the folding edge and 2 cm stocking st. Further measurements to be taken from the folding edge.

Change to 3 mm needles. PM in each side with 66 (70) 74 (78) 82 (86) sts on both the front and back pieces, and PM mid-back.

© House of Yarn AS

The copying and publication of materials and patterns, or their use for commercial purposes, is not allowed without prior agreement with House of Yarn AS.

Work the back higher with short rows and stocking st as follows:

Work 7 sts past the m mid-back, turn with **1 turning st**, work 7 sts past the m, turn with 1 turning st, work 14 sts past m, turn with **1 turning st**, work 14 sts past m, continue in this way by working 7 more sts past the m each time and for a total of 5 turns on each side.

NOTE! When working the turning sts, work the two loops/legs of the turning sts together as 1 st.

Continue in the round, with stocking st across all sts, **while at the same time** increasing 1 st on each side of each m in each side = 4 new sts.

Repeat the decreases every 2nd R a total of 3 (4) 4 (4) 5 (5) times = 144 (156) 164 (172) 184 (192) sts.

Work until the piece measures approx. 15 (16) 16 (17) 18 (19) cm in front.

PM around the middle 2 sts on both front and back pieces. M1 on each side of m in front and back every 2nd R, a total of 5 (6) 7 (7) 8 (8) times = 164 (180) 192 (200) 216 (224) sts. Divide the piece mid-front and mid-back and finish each leg separately.

LEGS

= 82 (90) 96 (100) 108 (112) sts.

PM around the first and last sts (= inseam).

Work stocking st in the round. **At the same time** when the leg measures 2 cm, decrease 1 st on each side of m sts:

K2tog after the m sts and K2tog tbl before the m sts.

Repeat these decreases every 2 (2) 2 (2.5) 2.5 (3) cm, 5 (7) 8 (8) 9 (9) times in total = 72 (76) 80 (84) 90 (94) sts.

Work until the leg measures 14 (16) 19 (23) 27 (31) cm.

At the same time on the last R, decrease 16 (20) 16 (20) 18 (22) sts evenly spaced = 56 (56) 64 (64) 72 (72) sts.

Change to 2.5 mm needles and work according to diagram. Change to colour 1, P 1 R for a folding edge, then work 10 R stocking st. Cast off.

Work the other leg in the same way.

ASSEMBLY

Fold the lining at the waist (leave a small opening for the elastic) and at the legs to the WS and sew down with loose sts. Thread the elastic through the hole in the waistline.

WAISTCOAT

LEFT SIDE TIP

Cast on 6 sts on 3.5 mm needles.

PM in each side with 3 sts for upper and lower parts (= 2 m). Work stocking st in the round. **At the same time on R 2**,

m1 on each side of each m as follows: *K1, **m1r**, work to 1 st before next m, **m1l**, K1*, repeat from *-* to end of R (= 4 sts increased).

Repeat the increases every R until you have 62 (66) 74 (78) 82 (86) sts.

On the next R cast off 31 (33) 37 (39) 41 (43) sts on the lower part = 31 (33) 37 (39) 41 (43) sts.

Leave sts on the needle.

RIGHT SIDE TIP

Cast on and work in the same way as the left side.

FRONT AND BACK PIECES

Change to 3 mm needles and continue working stocking st flat. Further measurements to be taken from here.

R 1: (= RS) Begin with the **right tip**, K1, **m1r**, work all remaining sts, cast on 67 (73) 79 (81) 87 (91) new sts, work across the sts on the **left tip** until 1 st remains, **m1l**, K1 = 131 (141) 155 (161) 171 (179) sts.

R 2: P 1, **m1l**, work until 1 st remains, **m1r**, P1.

Repeat R 1–2, 3 times in total (= 6 new sts on each side) = 141 (151) 165 (171) 181 (189) sts.

On next R cast on 7 new sts on beginning of R:

K1 through the 1st st without taking it off the needle, place the new st onto the left needle, repeat from *-*, work to end of R. Turn and cast on 7 new sts, work to end of R = 155 (165) 179 (185) 195 (203) sts.

PM in each side with 67 (73) 79 (81) 87 (91) sts for the back piece and 44 (46) 50 (52) 54 (56) sts for each front piece.

Continue as follows:

R 1: (= RS) K6, P1, work until 7 sts remain, P1, K6.

R 2: P6, K1, work until 7 sts remain, K1, P6.

Repeat R 1 + 2.

NOTE! The 6 first and 6 last sts are for lining.

At the same time on R 2, work buttonholes on the left front piece as follows:

K1, K2tog, 1 Y/O, K2tog tbl, K1, P1, K1, K2tog, 1 Y/O, K2tog tbl, work to end of R.

Next R: P1, P1 tbl through the Y/O.

Repeat buttonholes every 4.5 (5) 5.5 4.5 5 (4.5) cm a further 2 (2) 2 (3) 3 (4) times.

When the piece measures approx. 10 (11) 12 (15) 16 (19) cm, decrease for V-neck on every side from the RS as follows:

K8, slip 1 st K-wise, slip next st K-wise, place both sts back on left needle and K2tog tbl. Work until 10 sts remain, K2tog, work to end of R.

Repeat the V-neck decreases every 2nd R a total of 16 (16) 19 (21) 21 (22) times. **At the same time** when the piece measures approx. 11 (12) 13 (16) 17 (20) cm, cast off 6 (6) 8 (8) 8 (8) sts on each side for the armholes (= 3 (3) 4 (4) 4 (4) sts on each side of each m) = 61 (67) 71 (73) 79 (83) sts on the back piece. Finish the front and back pieces separately.

BACK PIECE

= 61 (67) 71 (73) 79 (83) sts.

Work stocking st flat as before, and keep casting off for armholes at the beginning of each R on each side:

2,1,1,1 (2,1,1,1) 2,1,1,1 (2,1,1,1) 2,1,1,1 (2,1,1,1,1) sts = 51 (57) 61 (63) 69 (71) sts.

When the piece measures 18 (20) 22 (26) 28 (32) cm, cast off the middle 21 (23) 27 (29) 31 (33) sts for the neckline and finish each shoulder separately.

Cast off for the neck every 2nd R: 1,1 st = 13 (15) 15 (15) 17 (17) shoulder sts.

Work until the piece measures 20 (22) 24 (28) 30 (34) cm.

Work the other shoulder in the same way but in reverse.

LEFT FRONT PIECE

Work stocking st flat and cast off for the armhole in the same way as on back piece. **At the same time**, continue working V-neck decreases as before = 20 (22) 22 (22) 24 (24) shoulder sts (included lining).
 Work until the piece measures 20 (22) 24 (28) 30 (34) cm.
 Cast off.

RIGHT FRONT PIECE

Work in the same way as left front piece but in reverse.

ASSEMBLY

Fold the lining on each front piece to the WS and sew down with loose sts.
 Graft the shoulder sts together.
 Sew down the cast-off sts on the "tips" in front to the WS, making sure this is not visible from the RS.
 You may want to sew a few sts around the buttonholes, through each layer, without tightening.

ARMHOLE EDGES

Pick up approx. 48 (54) 60 (64) 70 (76) sts on 2.5 mm needles around the armhole. St count must be divisible by 2.
 Work a rib (K1, P1) in the round for 1.5 cm.
 Cast off with K and P sts.
 Repeat around the other armhole.

NECKLINE EDGE

Pick up approx. 25 (27) 31 (33) 35 (37) sts on 2.5 mm needles along the neckline. St count must be divisible by 2 + 1.
 Work a rib flat for 1 cm as follows: (R 1 = WS)
R 1: K1, P2, *K1, P1*, repeat from *-* until 2 sts remain, P1, K1.
R 2: K3, *P1, K1*, repeat from *-* until 2 sts remain, K2.
 Cast off from the RS with K and P sts.
 Sew down the edge on both sides.

BUCKLE

Cast on 29 (29) 33 (35) 37 (37) sts on 3 mm circular needles.
 Work a rib flat for 2 cm as follows:

R 1: (= WS) K1, P2, *K1, P1*, repeat from *-* until 2 sts remain, P1, K1.

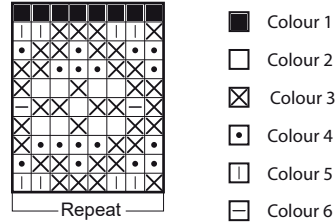
R 2: K3, *P1, K1*, repeat from *-* until 2 sts remain, K1.
 Cast off from the RS with K and P sts.

Place the buckle on the back piece. (See picture.)

Sew down the edge on both sides.

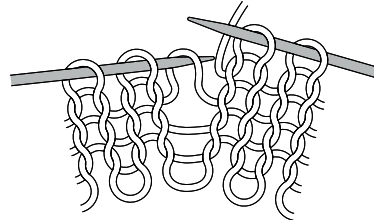
Sew a button on each side.

DIAGRAM

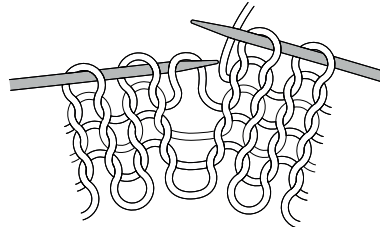


M1R AND M1L

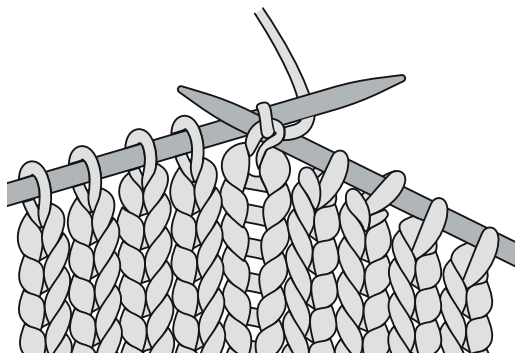
M1l: Pick up the strand between 2 sts, place it on left needle as shown in picture, work through the back loop.



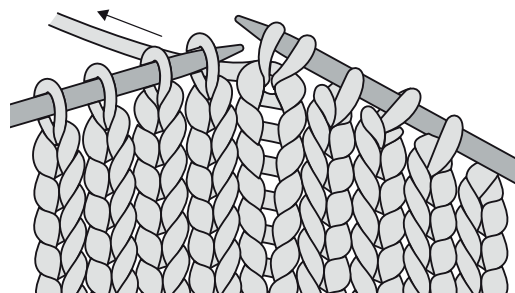
M1r: Pick up strand between 2 sts, place it on left needle as shown in picture, work the front loop.



TURNING ST



1 Turning st: Slip 1 st as if to P.



2 Pull st to back of right needle (tighten).