



PATTERN | 409-13 | CHILDREN 2-10 YEARS

# RALLAR JUMPER

CORN YELLOW | ALPAKKA FORTE



#dalegarn #DG  
#houseofyarn\_norway







## RALLAR JUMPER CORN YELLOW

### YARN USED IN THIS PATTERN:

ALPAKKA FORTE 80 % alpaca, 20 % nylon,  
50 grams = approx. 133 metres

**DESIGN** Dale Garn

**SIZES** 2 (4) 6 (8) 10 years

**NOTE!** See MEASUREMENTS to find the right size

### MEASUREMENTS

Upper body approx.	59	(61)	66	(70)	76	cm
Full length approx.	39	(42)	46	(51)	55	cm
Sleeves approx.	24	(27)	33	(36)	38	cm

### YARN REQUIREMENTS

Colour 1	3	(4)	4	(5)	5	balls
Colour 2	1 ball in all sizes					
Colour 3	1 ball in all sizes					

### COLOURS

Colour 1	Mottled Corn Yellow 718
Colour 2	Mottled Latte Beige 701
Colour 3	Mottled Warm Brown 709

### SUGGESTED NEEDLES

3 mm and 3.5 mm short and long circular needles  
and DPNs

### GAUGE

25 sts stocking st and colourwork on 3.5 mm needles  
= 10 cm

**ALTERNATIVE YARNS** ALPAKKA, ALPAKKA SPACE DYE

### How to find the right size:

1. Measure a garment that fits.
2. Compare your measurements with those in the pattern.
3. Select a size based on the upper body measurements.
4. Body and sleeves can be worked longer or shorter as needed.

**Check your gauge by working a swatch. Count the number of sts per 10 cm. If you have more sts than suggested, change to a larger needle size. If you have fewer sts change to a smaller needle size.**

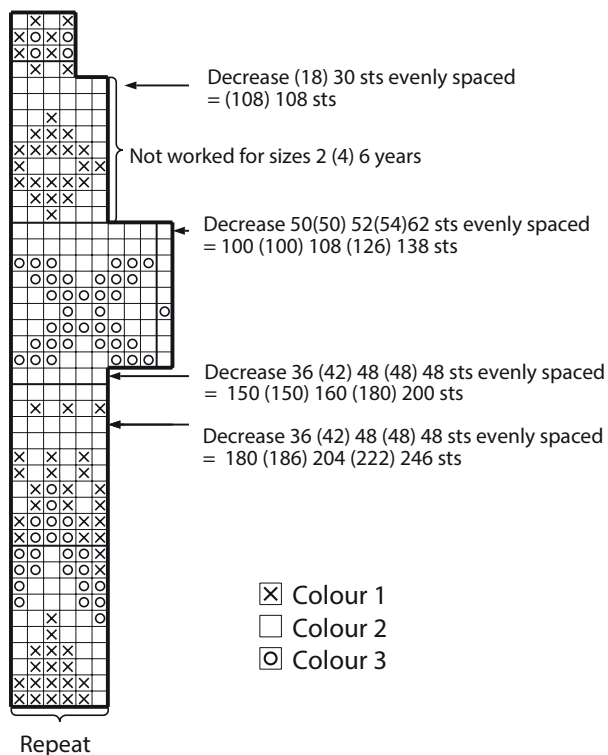
### ABBREVIATIONS

k = knit, p = purl, st = stitch, R = round/row(s),  
DPN = double pointed needles, K2 tog = knit 2 together,  
m = marker, PM = place marker, RS/WS = right/wrong side

### © House of Yarn AS

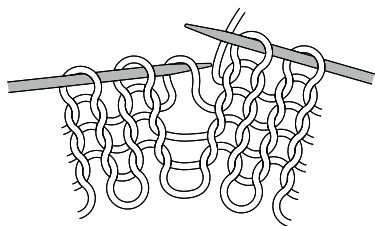
The copying and publication of materials and patterns,  
or their use for commercial purposes, is not allowed  
without prior agreement with House of Yarn AS.

## DIAGRAM

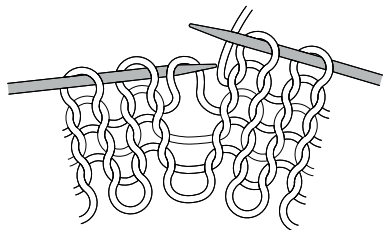


## M1R AND M1L

M1l: Pick up the strand between 2 sts, place it on left needle as shown in picture, work through the back loop.



M1r: Pick up strand between 2 sts, place it on left needle as shown in picture, work the front loop.



## BODY

Cast on 148 (152) 164 (174) 190 sts with colour 1 on 3 mm circular needles. Work 4 cm rib (K1, P1) in the round. PM in each side, with 74 (76) 82 (87) 95 sts on the front and back pieces. Change to 3.5 mm needles and work stocking st until the piece measures 26 (29) 32 (35) 38 cm. Cast off 10 sts on each side for the armholes (= 5 sts on each side of each m). Set aside and work the sleeves.

## SLEEVES

Cast on 38 (40) 42 (42) 44 sts with colour 1 on 3 mm DPNs. Work rib in the round (K1, P1) for 4 cm. PM around the first and last sts. Change to 3.5 mm needles and work stocking st **while at the same time** increasing 1 st on each side of the m sts every 2 (2) 2.5 (2) 2 cm, a total of 8 (10) 11 (14) 15 times = 54 (60) 64 (70) 74 sts. **NOTE!** Work the increases as follows: K1, **m1l** at the beginning of R and **m1r**, K1 at the end of R. When the piece measures 24 (27) 33 (36) 38 cm, cast off 10 underarm sts (= m sts + 4 sts on each side). Work one more sleeve in the same way.

## YOKE

Place the left sleeve, front piece, right sleeve, and back piece on 3.5 mm circular needles = 216 (232) 252 (274) 298 sts. Work 1 (2) 6 (3) 5 R stocking st, **while at the same time** on R 1, decreasing 0 (4) 0 (4) 4 sts evenly spaced = 216 (228) 252 (270) 294 sts. Work pattern according to diagram = 100 (100) 108 (108) 108 sts.

## NECKLINE

Change to colour 1 and 3 mm needles. Work 1 R stocking st, then rib for 6 cm (K1, P1). Cast off loosely with K and P sts. Fold the edge double to the WS and sew down. Join underarm seams.

Do you need inspiration for your next knitting project? Check out the website [houseofyarn.no](http://houseofyarn.no)