



CORTINA JUMPER

DG 458-14 | OLDER



DG 458-14

CORTINA JUMPER

DESIGN

Bitten Eriksen in 1956

REDESIGN

Ane Kydland Thomassen

YARN

OLDER TWEED 97% wool, 3% polyester,

50 grams = approx. 95 metres

OLDER 100% wool, 50 grams = approx. 95 metres

SIZES

XXS (XS) S (M) L (XL) XXL (XXXL)

NOTE! See GARMENT MEASUREMENTS and find the right size

GARMENT MEASUREMENTS

Chest measurements approx. 84 (93) 98 (107) 116 (124) 133 (142) cm

Full length approx. 60 (62) 64 (66) 68 (70) 72 (74) cm

Sleeve-length women approx. 48 cm

Sleeve-length men approx. 53 cm

YARN AMOUNTS

Colour 1: 9 (10) 11 (12) 13 (14) 16 (17) balls

Colour 2: 1 (1) 1 (2) 2 (2) 2 (2) balls

COLOURS

Colour 1: OLDER TWEED Kitt Tweed 423

Colour 2: OLDER Anthracite 406

SUGGESTED NEEDLE SIZE

Long and short circular needles and DPN sizes

4.5 mm and 5 mm

KNITTING TENSION

18 sts x 22 rounds with needle size 5 mm = 10 x 10 cm

Check your knitting tension by working a swatch.

Count the number of sts per 10cm; if you have more sts than suggested change to a larger needle size. If you have less sts, change to a smaller needle size.

FIND THE RIGHT SIZE

1. Measure a garment that fits you.
2. Compare the measurements with the pattern.
3. Choose your size from the width of the body.
4. Length of body and sleeves; you can work them longer or shorter if you wish.

ABBREVIATIONS

K = knit, P = purl, st. = stitch, r = row



BODY

Cast on 152 (168) 176 (192) 208 (224) 240 (256) sts with colour 1 and needle size 4.5 mm. Work rib in the round (K2, P2) for 7 cm.

Insert a marker round 1 st in each side, with 75 (83) 87 (95) 103 (111) 119 (127) sts on both the front and back pieces.

Change to needle size 5 mm and continue with stocking st. When the piece measures 40 (42) 44 (45) 46 (48) 50 (52) cm work pattern according to the diagram. Begin at the arrow for your chosen size after the marker-st on each side.

Marker-sts always worked with colour 1. When the diagram is finished, continue with colour 1.

When the piece measures 52 (54) 56 (58) 60 (62) 64 (66) cm, cast off the middle 15 (17) 17 (19) 21 (23) 25 (25) sts for the neck. Continue back and forth with stocking st and pattern

© House of Yarn AS

The copying and publication of materials and patterns, or their use for commercial purposes, is not allowed without prior agreement with House of Yarn AS.

Photo: Willy Nikkers



(some sizes have finished the pattern) and cast off for the neck at the beginning of each row 3,2,1,1 sts on each side. When the piece measures 58 (60) 62 (64) 66 (68) 70 (72) cm, cast off 25 (27) 27 (29) 31 (33) 35 (35) sts mid-back for the neck.

Finish each piece separately. Continuing casting off for the neck every 2nd row 1,1 st = 23 (26) 28 (31) 34 (37) 40 (44) shoulder-sts on each side of the marker-st.

Work until the piece measures 60 (62) 64 (66) 68 (70) 72 (74) cm. Cast off. Work the other shoulder in the same way but reversed.

SLEEVES

Cast on 40 (44) 48 (48) 52 (52) 56 (56) sts with colour 1 and needle size 4.5 mm.

Work rib in the round (K2, P2) for 7 cm.

Insert a marker round the first st (= marker-st).

Change to needle size 5 mm and continue with stocking st. When the sleeve measures 8 cm, increase 1 st on each side of the marker-st. Repeat this increases every 3 (3) 3 (2.5) 2.5 (2.5) 2.5 (2) cm a total of 12 (12) 12 (14) 14 (15) 15 (17) times = 64 (68) 72 (76) 80 (82) 86 (90) sts.

When the sleeve measures 34 cm (women) / 39 cm (men), work pattern according to the diagram. Count out from the middle of the sleeve where the diagram should begin. Marker-sts always worked with colour 1. The increased stitches are then worked into the pattern.

When the diagram is finished, continue with colour 1. Work until the sleeve measures 48 cm (women) / 53 cm (men), or to desired length. Work 2 cm stocking st back and forth, with the wrong side out, for the lining. Loosely cast off. Work one more sleeve.

ASSEMBLY

Lightly steam the piece.

Mark the sleeve-width on each side. Sew 2 machine seams, with small sts, on each side of the marker-st. Cut up between the seams.

Sew together the shoulder seams.

Sew in the sleeves. Make sure middle of sleeve matches the shoulder seam. Sew the lining over the cut-edge

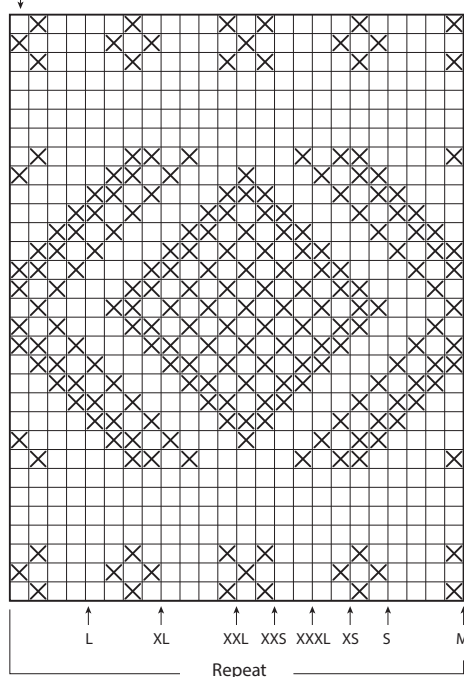
NECK

Begin on one shoulder.

Knit up approx. 11 sts per 5 cm with colour 1, using circular needle size 4.5 mm, around the neck = approx. 80 – 96 sts. St-number must be divisible by 4. Work 7 cm rib in the round with K2, P2. Loosely cast off. Fold the rib double to the inside and sew down with loose stitches.

DIAGRAM

Middle of sleeve /
Middle of front and back pieces



Do you need inspiration for your next knitting project? Check out the website houseofyarn.no