



DALE[®]
GARN

HOUSE of YARN

TROLLTIND JUMPER

DG 392-08B | NATURAL LANOLIN WOOL



Dale Garn - a part of HOUSE of YARN

DG 392-08

TROLLTIND JUMPER

DESIGN

Dale Garn

REDESIGN

Brit Frafjord Ørstavik

YARN

NATURAL LANOLIN WOOL 100 % pure new wool,
50 grams = approx.100 metres

Yarn alternatives: MERINO 22, LERKE

SIZES

S (M) L (XL) XXL

NOTE! See GARMENT MEASUREMENTS to find the right size

GARMENT MEASUREMENTS

Chest measurements approx. 98 (104) 115 (120) 131 cm

Full length approx. 66 (68) 69 (71) 73 cm

Sleeve-length approx. 53 cm (same for all sizes)

YARN AMOUNTS

Colour 1: 7 (8) 9 (9) 10 balls

Colour 2: 6 (6) 7 (8) 8 balls

Colour 3: 3 (4) 4 (5) 5 balls

COLOURS

Colour 1: Off white 1401

Colour 2: Olive 1436

Colour 3: Dark indigo 1437

NOTE! We have updated the yarn in this pattern as the original yarn is no longer produced. The colours can therefore differ slightly from those shown in the picture.

SUGGESTED NEEDLE SIZES

3 and 4 mm long and short circular needles and DPNs

KNITTING TENSION

22 sts stocking st and pattern on 4 mm needles = 10 cm

29 rounds stocking st and pattern with 4 mm needles = 10 cm

Check your knitting tension by working a swatch.

Count the number of sts per 10 cm; if you have more sts than suggested, change to a larger needle size. If you have fewer sts, change to a smaller needle size.

FIND THE RIGHT SIZE

1. Measure a garment that fits you.
2. Compare the measurements with the pattern.
3. Choose your size from the chest measurements.
4. Body and sleeves can be worked longer or shorter as needed.

Photo: JENS ROSENFELDT @ROSENFELDT.NU | STYLIST: JAN GUNNAR SVENSON @STYLESVENSON



ABBREVIATIONS

K = knit, P = purl, st. = stitch, r = row, DPN = double pointed needles, m1r = make one right, m1l = make one left

© House of Yarn AS

The copying and publication of materials and patterns, or their use for commercial purposes, is not allowed without prior agreement with House of Yarn AS.



BODY

Cast on 216 (228) 252 (264) 288 sts with colour 2 and circular needle size 3 mm. Work 7 cm rib in the round (K2, P2). Change to size 4 mm needles. Insert a marker round 1 st in each side (= marker-sts) and continue with stocking st and pattern according to diagram. Work until the piece measures 44 (45) 45 (46) 47 cm and cast off for the armholes as follows: Cast off 6 sts, work 97 (103) 115 (121) 133 sts, cast off 11 sts, work 97 (103) 115 (121) 133 sts, cast off 5 sts. Lay the piece to one side and work the sleeves.

SLEEVES

Cast on 52 (52) 56 (56) 60 sts with colour 2 and DPNs size 3 mm. Work rib in the round (K2, P2) for 7 cm. Insert a marker round the first st = marker-st. Change to DPNs size 4 mm and work 1 round of stocking st, **at the same time** increase 6 sts evenly spaced = 58 (58) 62 (62) 66 sts. Continue with

stocking st and pattern according to diagram.

Count out from middle of sleeve where the diagram should start. Begin selected size by arrow on left side of diagram. When the sleeve measures 9 cm, increase 1 st on each side of marker-st. The increased sts are worked into the pattern. Repeat the increases every 2.5 (2) 2 (1.5) 1.5 cm a total of 17 (19) 19 (21) 21 times = 92 (96) 100 (104) 108 sts. Work until the piece measures 53 cm. Finish on the same round as on the body. Cast off 11 sts mid-under sleeve (= marker-st + 5 sts on each side) = 81 (85) 89 (93) 97 sts. Lay the sleeve to one side and work the other sleeve.

YOKE

Place back piece, left sleeve, front piece and right sleeve on circular needle size 4 mm = 356 (376) 408 (428) 460 sts. Insert a marker in each transition = 4 markers. Continue in the round with pattern according to diagram and decrease for raglan as follows: K2 together before each marker and K2 twisted together after each marker. Decrease for raglan every round 5 times, then every 2nd round 23 (24) 26 (27) 29 times. **At the same time**, on the round with the last decrease for raglan, cast off 25 (27) 29 (29) 31 stitches in middle of front piece for the neck. Work to beginning of round. Cut the yarn and restart by the neck. Work back and forth, with raglan decreases as before (decrease from right side), **at the same time** as you continue to cast off on each side, every 2nd row as follows: 3,2,2,2 sts, then 15 sts and finally 4 sts. Cast off.

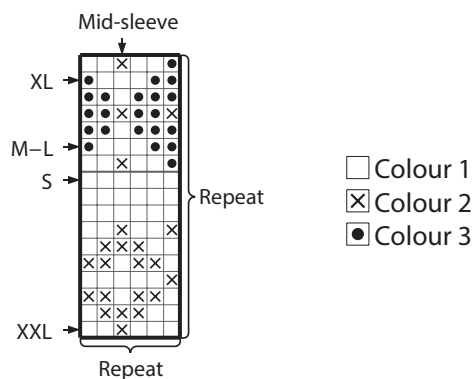
ASSEMBLY

Sew together under the sleeves.

NECKLINE

Knit up 1 st in each st/row with colour 2, using circular needle size 3 mm, over the cast-off sts on neck. Work 1 round stocking st and adjust st-number to 138 (140) 144 (148) 152 sts. Then work 7 cm rib, with K2, P2. Cast off. Fold the neck double to the inside and sew down with loose stitches.

DIAGRAM



Do you need inspiration for your next knitting project? Check out the website houseofyarn.no