



DU STORE
ALPAKKA[®]

HOUSE of YARN

MEN'S JUMPER

DSA 35-11 | ALPAKKA TWEED



Du Store Alpaka – a part of **HOUSE of YARN**

DSA 35-11

MEN'S JUMPER

DESIGN

Hrönn Jónsdóttir

YARN

ALPAKKA TWEED 50 % alpaca, 30 % wool, 20 % Donegal
50 grams = 80 metres

SIZES

S (M) L (XL) XXL

MEASUREMENTS

Upper body approx. 94 (104) 113 (122) 132 cm

Full length approx. 69 (70) 72 (73) 75 cm

Sleeves approx. 54 (55) 56 (57) 58 cm

YARN REQUIREMENTS

Colour 1 4 (4) 5 (5) 6 balls

Colour 2 9 (10) 10 (11) 12 balls

Colour 3 1 (1) 1 (2) 2 balls

COLOURS

Colour 1 Dark Grey 102

Colour 2 Grey 101

Colour 3 Olive 110

SUGGESTED NEEDLES

4 mm and 5 mm circular needles and DPNs

4 mm short circular needles for neckline

GAUGE

17 sts stocking st and colourwork on 5 mm needles = 10 cm

Check your gauge by working a swatch.

Count the number of sts per 10 cm. If you have more sts than suggested, change to a larger needle size. If you have fewer sts change to a smaller needle size.

FIND YOUR SIZE

1. Measure a knitted garment that fits you.
2. Compare your measurements with those in the pattern.
3. Select your size based on the upper body measurements.
4. Body and sleeves may be worked longer or shorter as needed.

ABBREVIATIONS

k = knit, p = purl, st = stitch, R = round/row,

DPN = double pointed needles, K2tog = knit 2 together,

m = marker, PM = place marker, tbl = through back loop,

RS/WS = right/wrong side

© House of Yarn AS

The copying and publication of materials and patterns, or their use for commercial purposes, is not allowed without prior agreement with House of Yarn AS.



BODY

Cast on 160 (176) 192 (208) 224 sts with colour 1 on 4 mm needles.

Work rib in the round (K1, P1) and stripes as follows:

- 1 R colour 1
- 2 R colour 2
- 2 R colour 1
- 2 R colour 2
- 2 R colour 1
- 2 R colour 2
- 2 R colour 3

PM in each side with 80 (88) 96 (104) 112 sts for both the front and back pieces. Change to 5 mm needles and work in the round according to diagram until the piece measures 63 (64) 66 (67) 69 cm (adjust the length so that you finish after the 6th or 12th R in the diagram). On the next R cast off for the neckline as follows: Work 32 (36) 39 (42) 45 sts, cast off the next 16 (16) 18 (20) 22 sts, work to end of R. Cut yarn. Working flat, continue with pattern according to diagram as before **but** R begins on the right-hand side of the cast-off front piece sts.

Cast off for the neckline on every side, every other R, 3,2,1,1 sts (same for all sizes) = 134 (146) 160 (174) 188 sts left on needles. Work until the piece measures 69 (70) 72 (73) 75 cm. On the next R cast off all sts except the middle 26 (30) 32 (34) 36 sts on the back piece, place these on a thread/st holder.

SLEEVES

Cast on 44 (46) 46 (48) 48 sts with colour 1 on 4 mm DPNs.

Work rib in the round (K1, P1) and stripes as follows:

- 1 R colour 1
- 1 R colour 2
- 1 R colour 1
- 1 R colour 2
- 1 R colour 1
- 1 R colour 2
- 1 R colour 3

PM around the first st on the R = sleeve m.

Change to 5 mm needles and work according to diagram (count outwards from the middle to determine where the different sizes begin). Increase 1 st on each side of sleeve m every 3.5 (3.5) 3 (3) 2.5 cm until you have 72 (74) 78 (82) 86 sts on the needles.

Work the increased sts into the pattern as you go.

Work until the sleeve measures 53 (54) 55 (56) 57 cm. Work 2 R with colour 3. Turn piece inside out, change to colour 2 and work 5 R of stocking st for lining. Work the other sleeve in the same way.

ASSEMBLY

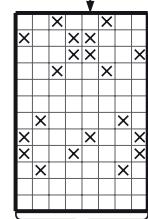
Use a sewing machine to sew 2 seams on each side of the side m on the body (corresponding to the upper sleeve width). Cut up between the seams. Sew or graft the shoulder sts together. Sew in the sleeves and sew the lining down to the WS.

NECKLINE

Place sts from the thread/st holder on 4 mm short circular needles. Use colour 3 and pick up approx. 19 sts per 10 cm around the neckline on the front piece. Work 1 R stocking st across all sts and then work rib in the round (K1, P1) until the neckline measures 9 cm. Cast off with rib sts. Fold the neck double to the WS and sew down with loose sts.

DIAGRAM

The middle of the sleeve



Repeat

□ Colour 2

⊗ Colour 1

Repeat

Do you need inspiration for your next knitting project? Check out the website houseofyarn.no