



# WILLIAM JUMPER

DSA 52-03D | ALPAKKA WOOL



Du Store Alpakka – a part of **HOUSE of YARN**



DSA 52-03D

## WILLIAM JUMPER

### DESIGN

Iselin Hafselid

### YARN

ALPAKKA WOOL 60 % finest alpaca, 40 % pure new wool,  
50 grams = approx. 166 metres

### SIZES

S (M) L (XL) XXL

### MEASUREMENTS

Upper body approx. 96 (103) 113 (120) 130 cm

Full length approx. 66 (68) 70 (72) 74 cm

Sleeves approx. 54 cm (same for all sizes)

### YARN REQUIREMENTS

16 (18) 20 (22) 24 balls

### COLOUR

Mottled Light Beige 505

### SUGGESTED NEEDLES

4 mm and 4.5 mm short and long circular needles and DPNs  
Cable needle

### GAUGE

24 sts cable knit with yarn held double on 4.5 mm needles  
= 10 cm

24 sts rib (K1, P1) with yarn held double on 4.5 mm needles  
= 10 cm

**Alternative yarn:** MINI STERK

*Check your gauge by working a swatch.*

*Count the number of sts per 10 cm. If you have more sts than suggested, change to a larger needle size. If you have fewer sts change to a smaller needle size.*

### FIND THE RIGHT SIZE

1. Measure a garment that fits.
2. Compare your measurements with those in the pattern.
3. Select a size based on the upper body measurements.
4. Body and sleeves may be worked longer or shorter as desired.

### ABBREVIATIONS

k = knit, p = purl, st = stitch, R = round/row,  
DPN = double pointed needles, m = marker,  
PM = place marker, RS/WS = right/wrong side

#### © House of Yarn AS

The copying and publication of materials and patterns, or their use for commercial purposes, is not allowed without prior agreement with House of Yarn AS.



**The entire garment is knitted with yarn held double.**

### BODY

Using 4 mm circular needles, cast on 232 (248) 272 (288) 312 sts. Work rib in the round (K1, P1) for 4 cm. Change to 4.5 mm needles and PM in each side with 116 (124) 136 (144) 156 sts for both the front and back pieces. Continue as follows: Begin at the side m on front piece, \*work 11 (15) 21 (25) 31 sts according to diagram **C**, diagram **B** (8 sts), 7 sts diagram **C**, diagram **B** (8 sts), 7 sts diagram **C**, diagram **B** (8 sts), 7 sts diagram **C**, diagram **B** (8 sts), 7 sts diagram **C**, diagram **B** (8 sts), 11 (15) 21 (25) 31 sts diagram **C**\*. Repeat from \*-\* on the back piece. Work until the piece measures approx. 40 (42) 43 (45) 47 cm. Divide the piece at each side m and finish the front and back pieces separately.

**NOTE!** Make sure to work the cables from the RS.



## BACK PIECE

Continue working flat **while** casting off for armholes at the beginning of each R on each side: 3,2,1 sts (same in all sizes) = 104 (112) 124 (132) 144 sts. Work until the piece measures approx. 63 (65) 67 (69) 71 cm. Cast off for diagonal shoulders at beginning of each R: 9,9,9 (11,10,10) 12,12,12 (14,13,13) 15,15,15 sts. When the piece measures 66 (68) 70 (72) 74 cm, cast off the remaining 50 (50) 52 (52) 54 sts.

## FRONT PIECE

Work in the same way as back piece until the front measures approx. 48 (50) 52 (54) 56 cm. Cast off the middle 22 sts (same for all sizes) for the neckline and finish each side separately. Cast off 1 st from the neckline on every other R until there are 27 (31) 36 (40) 45 sts left. Work until the piece measures approx. 63 (65) 67 (69) 71 cm and cast off for diagonal shoulder on the armhole side every other R: 9,9,9 (11,10,10) 12,12,12 (14,13,13) 15,15,15 sts. Work the other side in the same way but in reverse.

## SLEEVES

Using 4 mm DPNs, cast on 48 (48) 52 (52) 56 sts. Work rib in the round (K1, P1) for 4 cm. Change to 4.5 mm DPNs and continue as follows: 7 (7) 7 (9) 9 sts diagram **C**, diagram **B** (8 sts), diagram **A** (18 sts), diagram **B** (8 sts), 7 (7) 7 (9) 9 sts diagram **C**. When the sleeve measures approx. 5 cm, increase 2 underarm sts and work the new sts into the rib. Repeat the increases every 1.5 cm until you have 114 (114) 118 (118) 122 sts in total. Work until the sleeve measures 54 cm (in all sizes). Divide at mid-underarm and continue working flat. **NOTE!** Make sure to work the cables from the RS. Cast off for sleeve cap at beginning of each R on each side: 11,10,10,9,8 (11,10,10,9,8) 11,11,10,9,9 (11,11,10,9,9) 11,11,10,10,10 sts. Work 1 R without casting off and then cast off the middle 18 sts (all sizes). The sleeve will now measure approx. 59 cm (all sizes).

Work one more sleeve in the same way.

## SHAWL COLLAR

Using 4 mm circular needles, cast on 134 (136) 136 (138) 140 sts.

Work a rib flat with K1, P1 for 12 cm. Cast off.

## ASSEMBLY

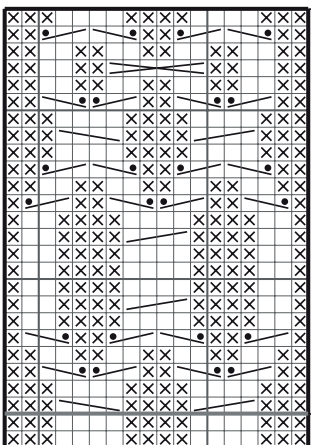
Use a single strand for the grafting/sewing.

Sew/graft together the shoulder seams, making K sts meet K sts and P sts meet P sts on each side.

Sew in the sleeves. PM in the middle of the back piece and on the middle of the collar. Fasten the collar around the neckline so that the short edges overlap in the front. Sew down from the RS through the outermost sts on the collar and make sure the seam is nice and even.

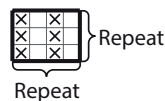
## DIAGRAM

A



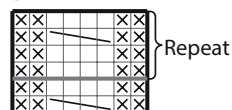
Repeat

C



Repeat

B



Repeat

□ K from RS, P from WS

⊗ P from RS, K from WS

Place 2 sts on cable needle held in front of piece, K2, work sts from cable needle K

Place 2 sts on cable needle held behind the piece, K2, work sts from cable needle K

Place 2 sts on cable needle held in front of piece, P1, work sts on cable needle K

Place 1 st on cable needle held behind the piece, K 2, P sts from cable needle

K2, P2, K2, place these 6 sts on to a cable needle, wind the yarn 4 times around (towards the right) these sts, place sts back on the right R

Do you need inspiration for your next knitting project? Check out the website [houseofyarn.no](http://houseofyarn.no)