



DALE
GARN

HOUSE of YARN

ADVENT CALENDAR

DG 235-01 | NATURAL LANOLIN WOOL



Dale Garn – a part of HOUSE of YARN

DG 235-01

ADVENT CALENDAR

DESIGN

Kari Haugen

YARN

NATURAL LANOLIN WOOL 100 % pure new wool,
50 grams = approx. 100 metres

Alternative yarns: MERINO 22, LERKE, ØKO BOMULL

SIZE

Approx. 11 cm

YARN REQUIREMENTS FOR 24 MITTENS

Colour 1	2 balls
Colour 2	1 ball
Colour 3	1 ball
Colour 4	1 ball
Colour 5	1 ball

COLOURS

Colour 1	Off-White 1401
Colour 2	Clear Red 1407
Colour 3	Mottled Grey 1420
Colour 4	Blue Jeans 1435
Colour 5	Olive 1436

NOTE! We have updated the yarn in this pattern, as the original yarn quality is discontinued. The colours may therefore differ slightly from those shown in the picture.

SUGGESTED NEEDLES

3 mm DPNs
3 mm crochet hook

GAUGE

26 sts on 3 mm needles = 10 cm

Check your gauge by working a swatch. Count the number of sts per 10 cm. If you have more sts than suggested, change to a larger needle size. If you have fewer sts change to a smaller needle size.

ABBREVIATIONS

k = knit, p = purl, st = stitch, R = round/row(s),
DPN = double pointed needles, K2 tog = knit 2 together,
tbl = through back loop, dc = double crochet stitch(es)

© House of Yarn AS

The copying and publication of materials and patterns, or their use for commercial purposes, is not allowed without prior agreement with House of Yarn AS.



Using 3 mm DPNs, cast on 26 sts with the colour shown in the diagram. Divide the sts on 4 needles, with 7, 6, 7, 6 sts on each. Work a rib (K1, P1) for 12 R in stripes according to diagram. Continue with stocking st and pattern according to the mitten diagram.

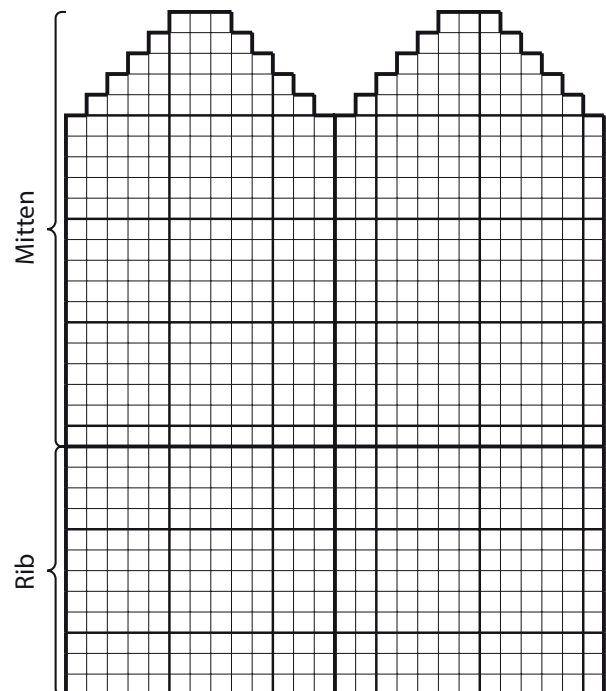
On R 28, decrease as follows: R1: First 2 sts are Ktog tbl.

R2: Last 2 sts are Ktog. R3: First 2 sts are Ktog tbl.

R4: Last 2 sts are Ktog. Decrease like this on every R until 6 sts remain.

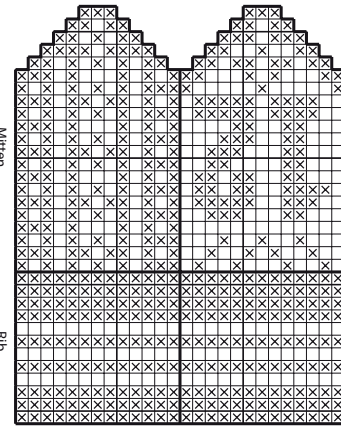
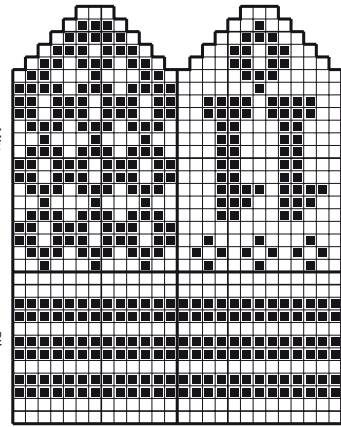
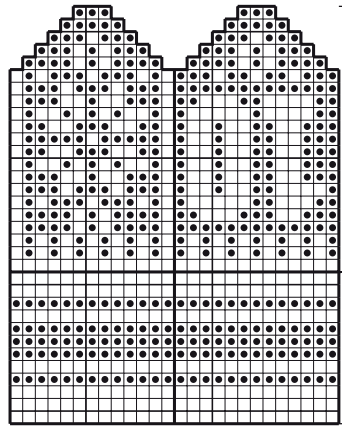
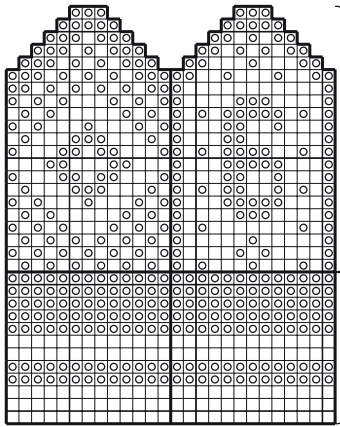
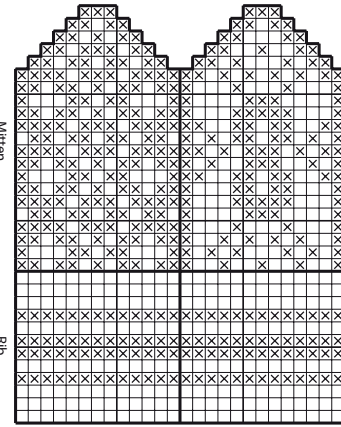
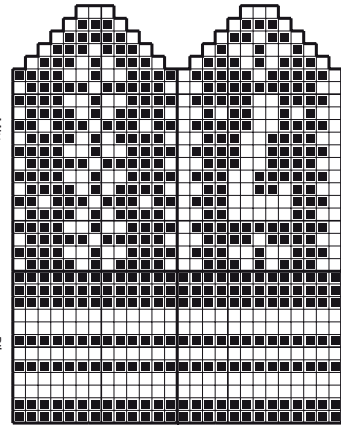
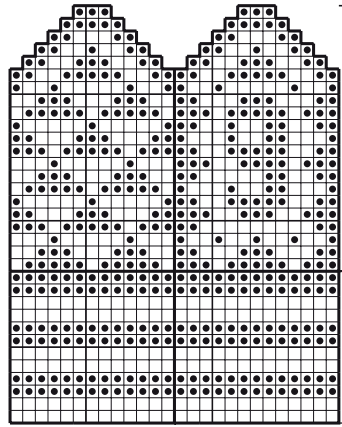
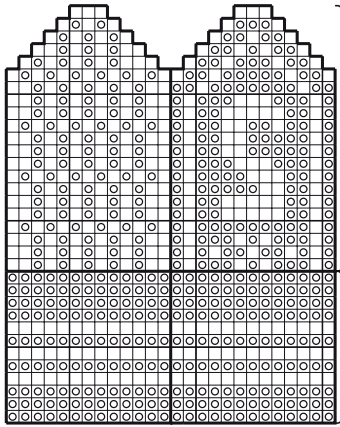
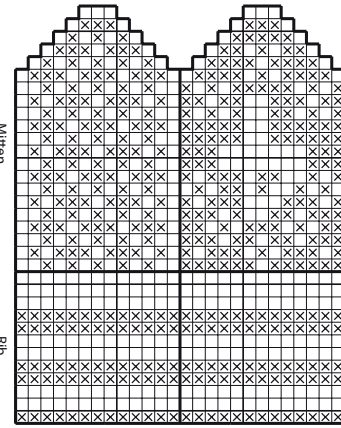
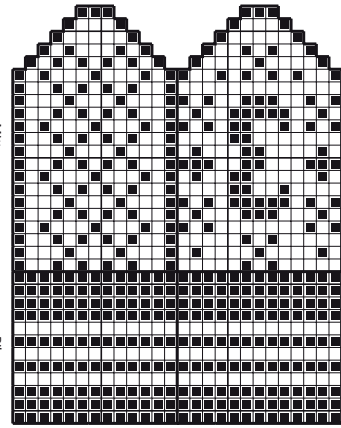
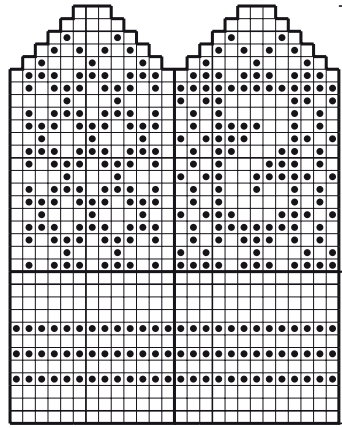
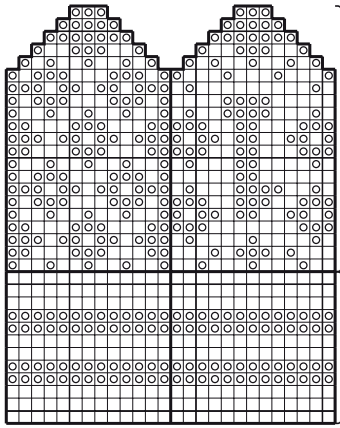
Cut yarn and pull through the remaining sts, tightening gently. Crochet a small loop in the base colour with 12 dc and sew onto one side of the mitten.

MAKE YOUR OWN MITTEN DESIGN



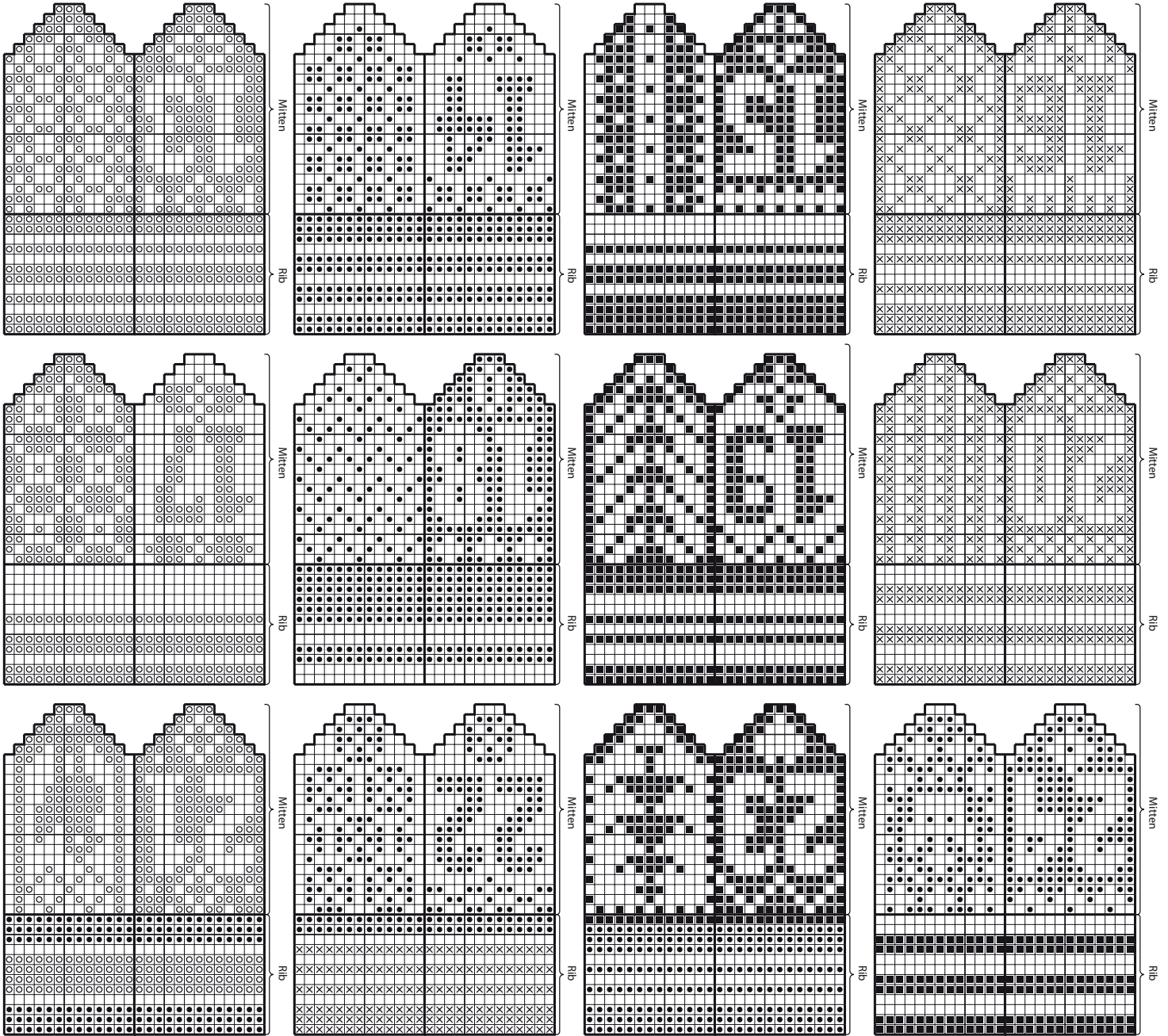
Use this diagram to draw your own design. If you want to make several designs, use parchment paper or similar to copy as many as you need.

DIAGRAM



- = Colour 1
- = Colour 2
- ⊗ = Colour 3
- ⊙ = Colour 4
- = Colour 5

DIAGRAM



- = Colour 1
- = Colour 2
- ⊗ = Colour 3
- ⊙ = Colour 4
- = Colour 5

Do you need inspiration for your next knitting project? Check out the website houseofyarn.no