

Create the beautiful motifs

Embroidery on blouse

FREE
DIY

TIP: You can also embroider a design based on a child's drawing



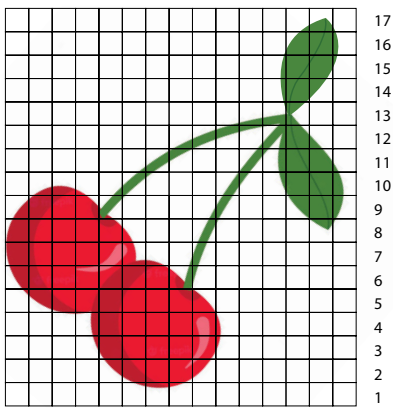
1. Cut out your drawings.



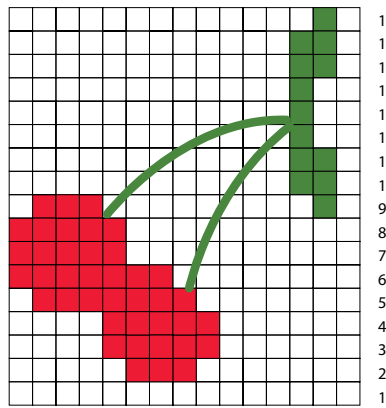
2. Place them on your knitted blouse with pins, so you know where they will sit on the final creation.

Create the beautiful motifs

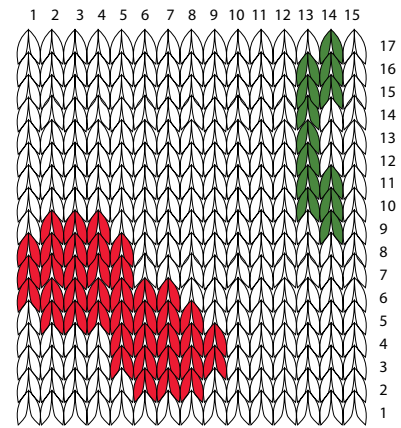
Embroidery on blouse



3. Draw your design on a piece of checkered paper that corresponds to the mesh size of your blouse.

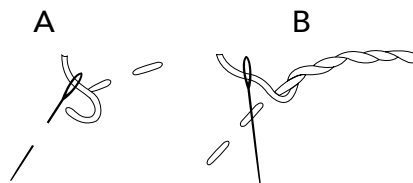


4. The drawing will be more pixelated and it's up to you how much you include in your drawing. Lines, such as stems on the cherry, will be embroidered on afterwards.



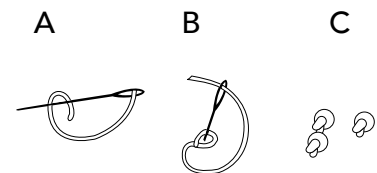
5. The thread used for your embroidery is pulled through the existing stitch in the blouse.

Types of stitches used:



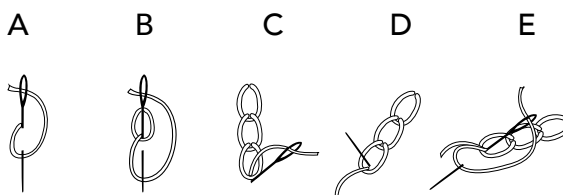
Running Stitch A+B

For edge lines.



French knots

Usable as eye for "bi" and "i".

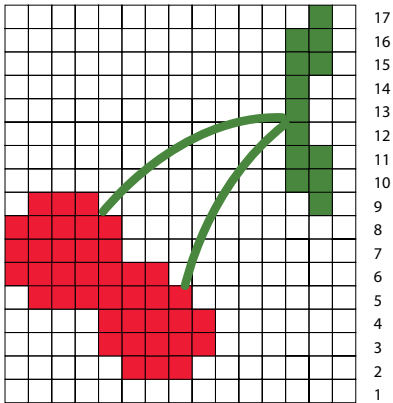


Chain stitch A - E

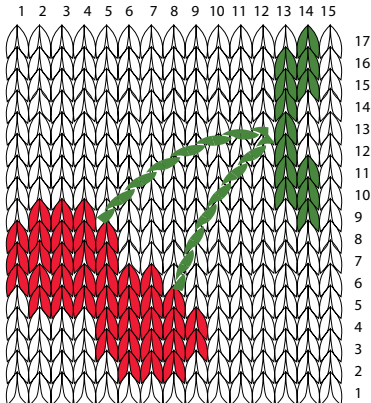
Is a bit fuller and is used for lines that need to be filled in, or fields that need to be filled out.

Create the beautiful motifs

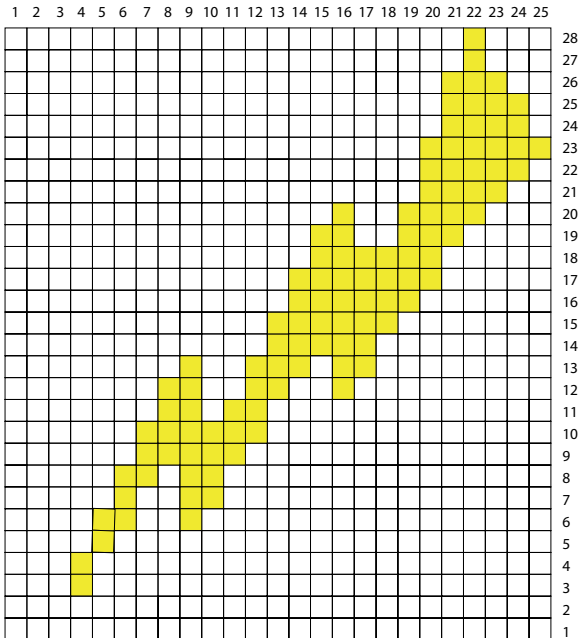
Embroidery on blouse



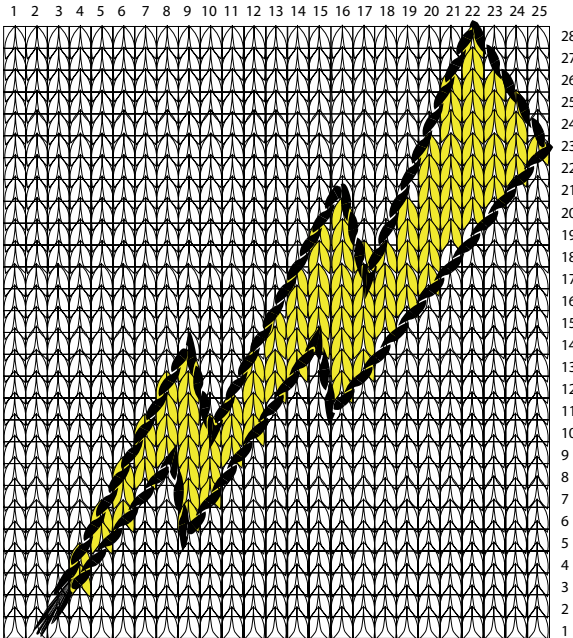
Kitchener Stitch in red and green



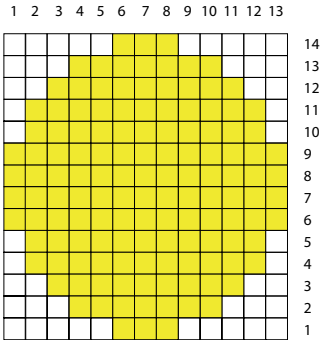
Running stitch in green



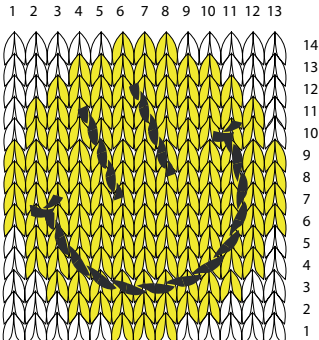
Kitchener Stitch in mustard yellow



Running stitch in black



Kitchener Stitch in mustard yellow

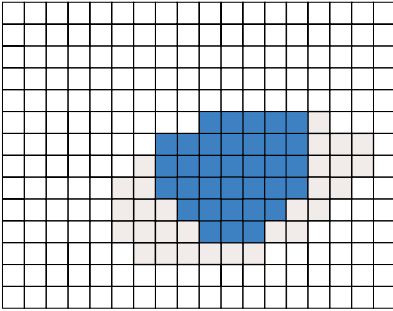


Chain stitch in black

Create the beautiful motifs

Embroidery on blouse

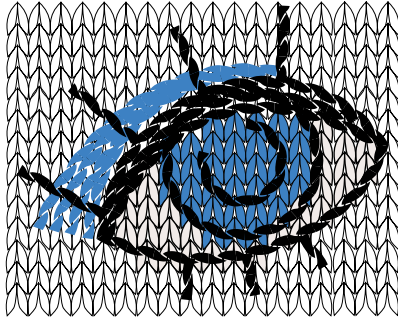
1 2 3 4 5 6 7 8 9 10 11 12 13 14 15 16 17 18



14
13
12
11
10
9
8
7
6
5
4
3
2
1

Kitchener Stitch in dusty blue and nature

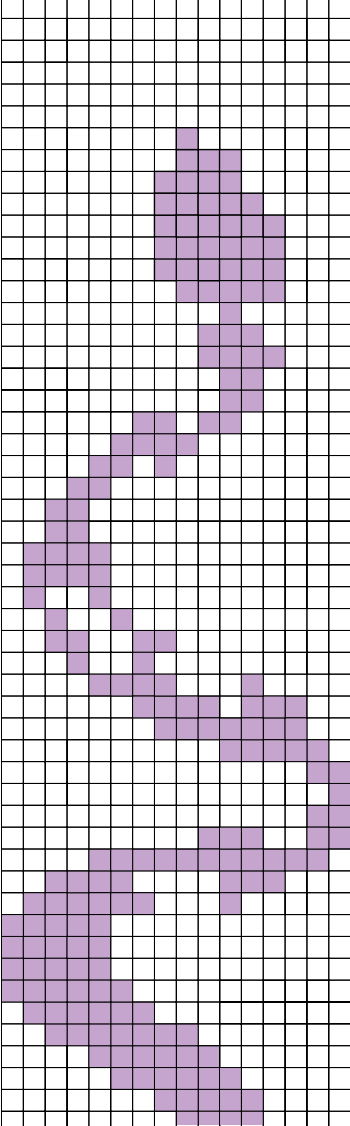
1 2 3 4 5 6 7 8 9 10 11 12 13 14 15 16 17 18



14
13
12
11
10
9
8
7
6
5
4
3
2
1

Chain stitch in black and dusty blue

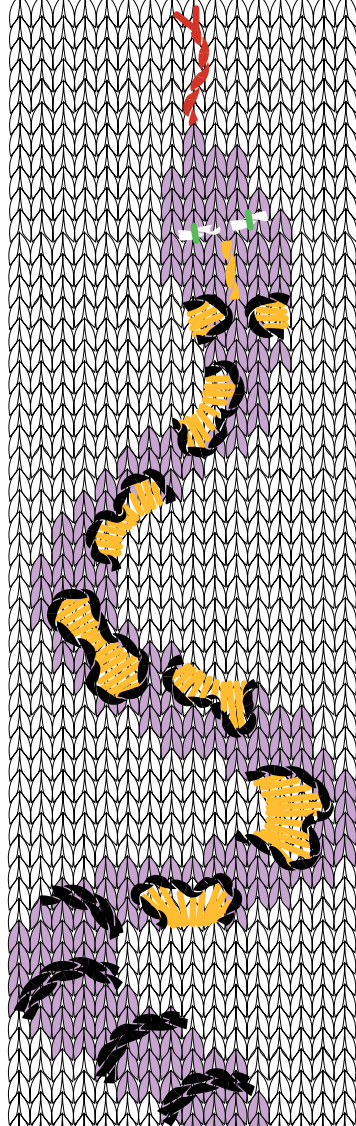
1 2 3 4 5 6 7 8 9 10 11 12 13 14 15 16



56
55
54
53
52
51
50
49
48
47
46
45
44
43
42
41
40
39
38
37
36
35
34
33
32
31
30
29
28
27
26
25
24
23
22
21
20
19
18
17
16
15
14
13
12
11
10
9
8
7
6
5

Kitchener Stitch in lilac

1 2 3 4 5 6 7 8 9 10 11 12 13 14 15 16



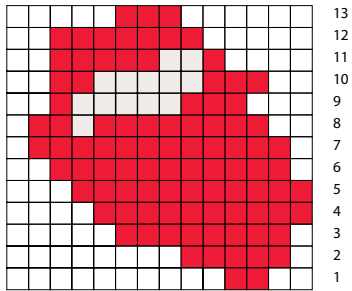
56
55
54
53
52
51
50
49
48
47
46
45
44
43
42
41
40
39
38
37
36
35
34
33
32
31
30
29
28
27
26
25
24
23
22
21
20
19
18
17
16
15
14
13
12
11
10
9
8
7
6
5

Chain stitch in black, orange, nature, green and red

Create the beautiful motifs

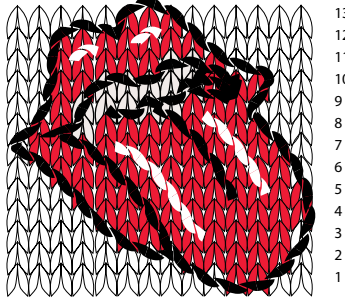
Embroidery on blouse

1 2 3 4 5 6 7 8 9 10 11 12 13 14



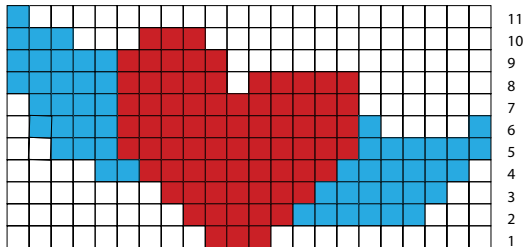
Kitchener Stitch in red

1 2 3 4 5 6 7 8 9 10 11 12 13 14



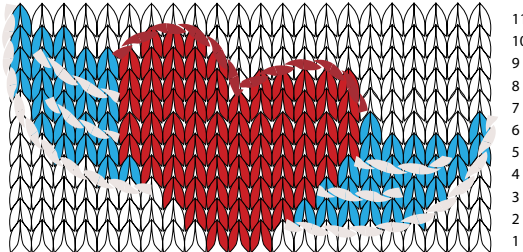
Chain stitch and running stitch in black and chain stitch in nature

1 2 3 4 5 6 7 8 9 10 11 12 13 14 15 16 17 18 19 20 21 22



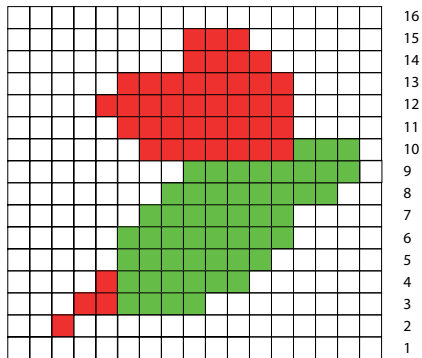
Kitchener Stitch in dusty red and dusty blue

1 2 3 4 5 6 7 8 9 10 11 12 13 14 15 16 17 18 19 20 21 22



Chain stitch in nature and running stitch in red

1 2 3 4 5 6 7 8 9 10 11 12 13 14 15 16 17



Kitchener Stitch in red and green

1 2 3 4 5 6 7 8 9 10 11 12 13 14 15 16 17

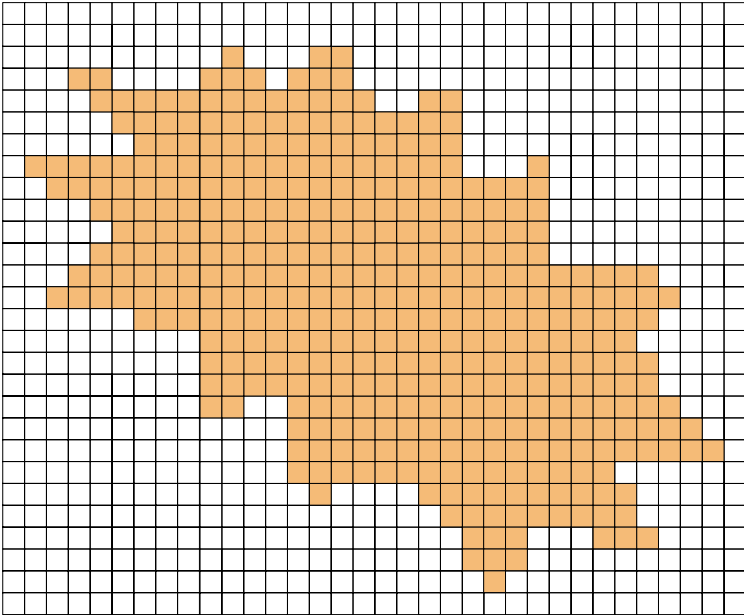


Chain stitch and running stitch in black and french knot eye in black

Create the beautiful motifs

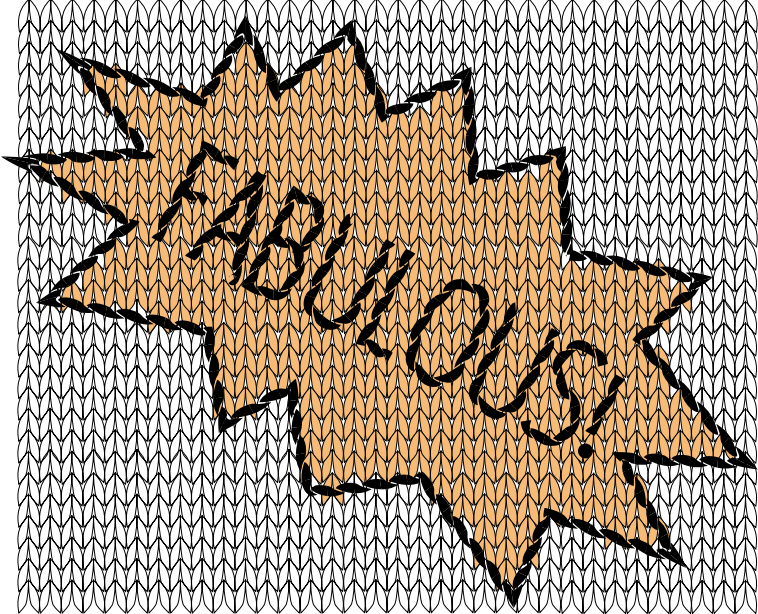
Embroidery on blouse

1 2 3 4 5 6 7 8 9 10 11 12 13 14 15 16 17 18 19 20 21 22 23 24 25 26 27 28 29 30 31 32 33 34



Kitchener Stitch in orange

1 2 3 4 5 6 7 8 9 10 11 12 13 14 15 16 17 18 19 20 21 22 23 24 25 26 27 28 29 30 31 32 33 34



Running stitch as edge. Chain stitch in letters and french knot eye in "!". All in black