

Geometric - Kaleidoscope Tile / Geometrique - Kaléidoscope

Colour Guide / Diagramme en couleur



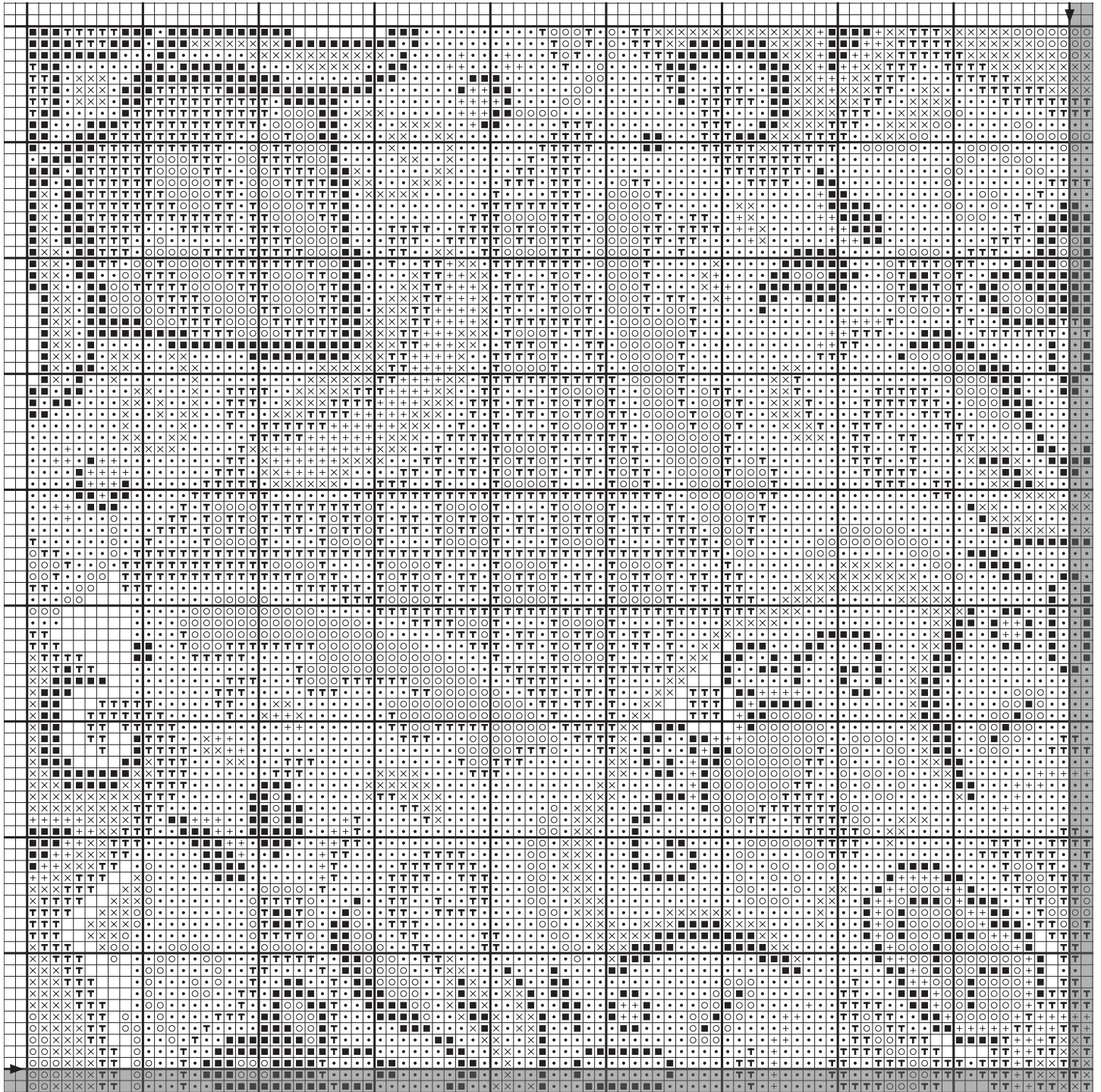


Geometric - Kaleidoscope Tile / Geometrique - Kaléidoscope



Technical Chart / Diagramme

Note: Drawing not to scale / Dessin pas à l'échelle

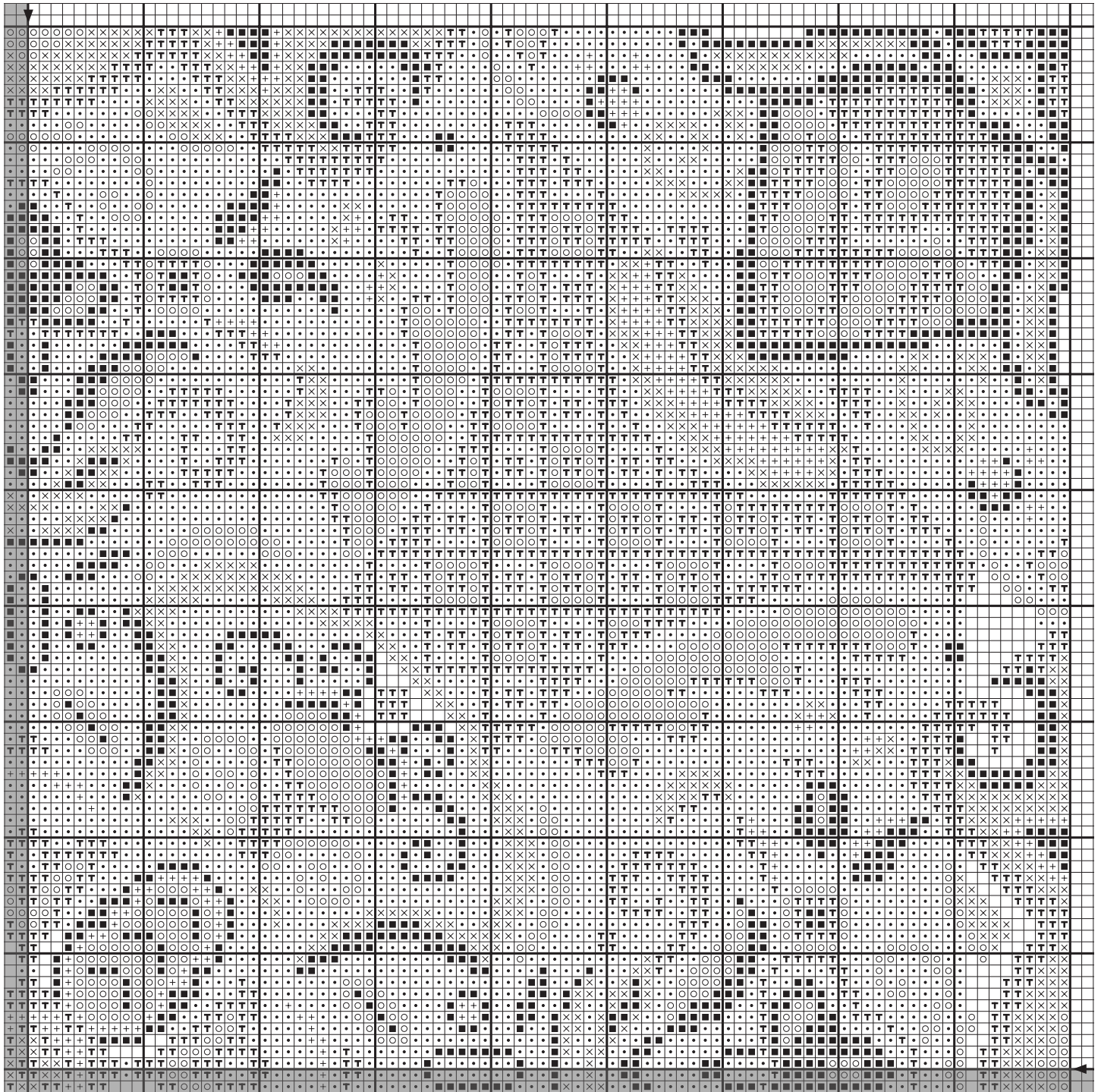


Geometric - Kaleidoscope Tile / Geometrique - Kaléidoscope

Technical Chart / Diagramme



Note: Drawing not to scale / Dessin pas à l'échelle

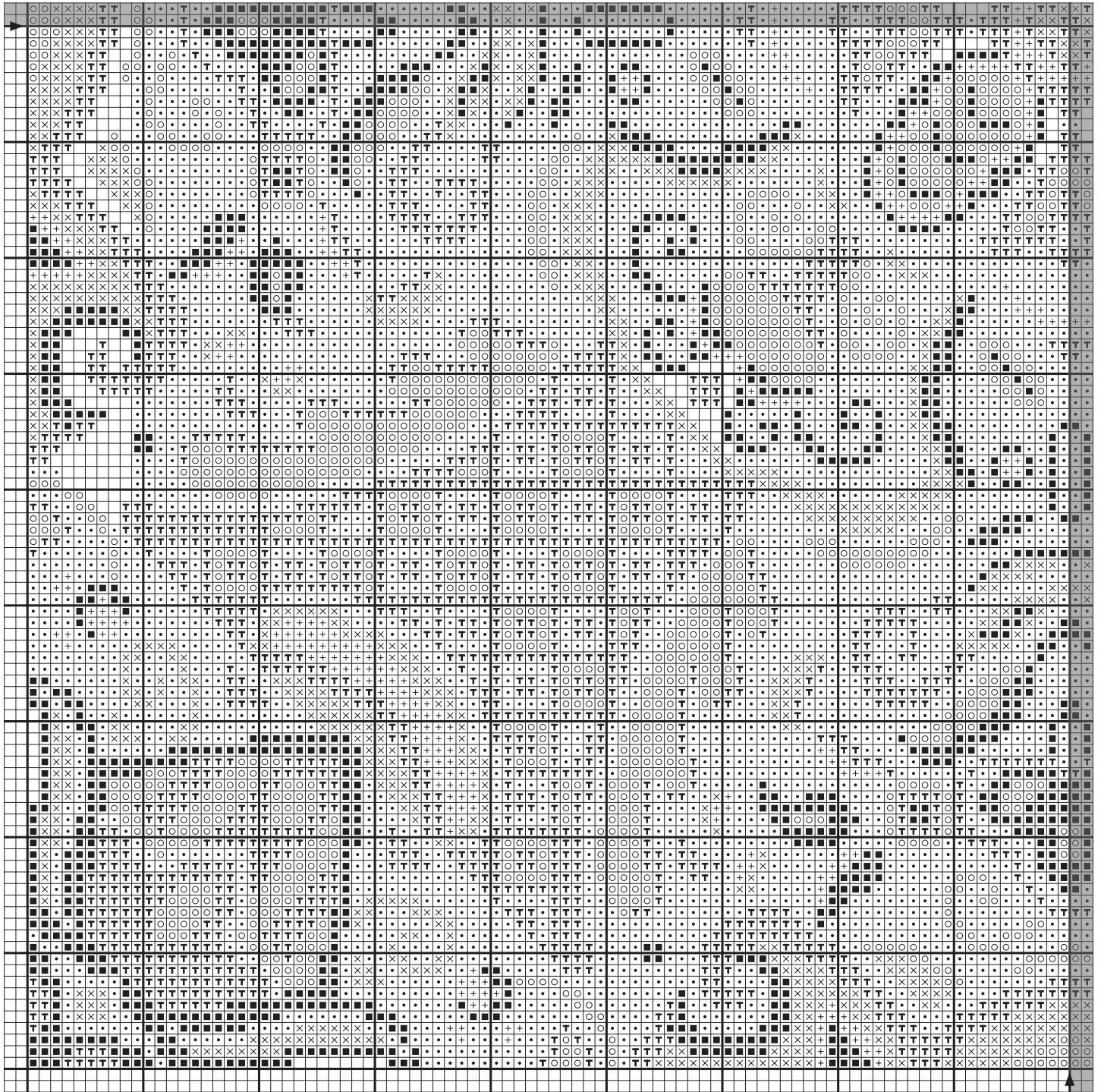


Geometric - Kaleidoscope Tile / Geometrique - Kaléidoscope

Technical Chart / Diagramme



Note: Drawing not to scale / Dessin pas à l'échelle

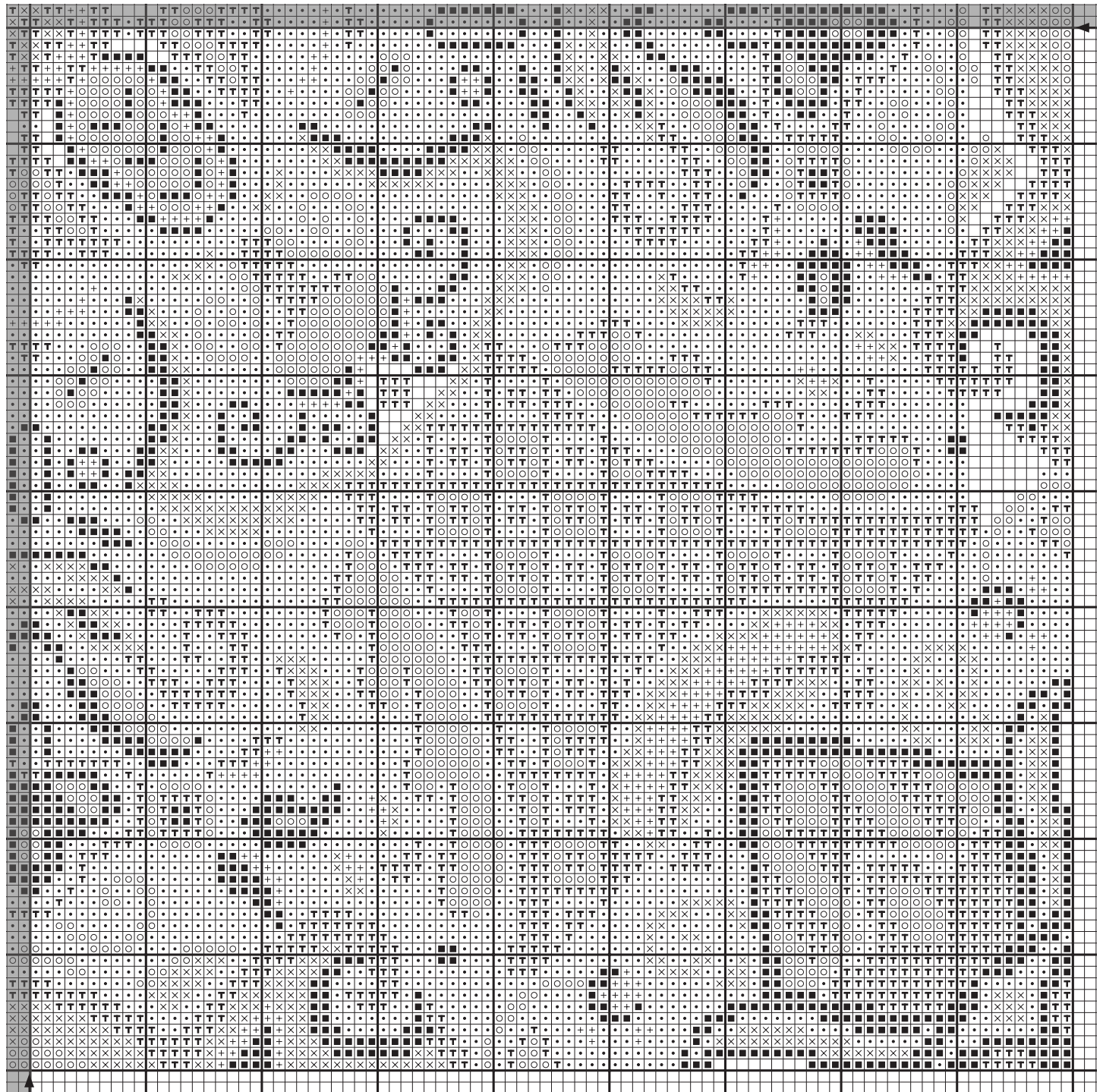


Geometric - Kaleidoscope Tile / Geometrique - Kaléidoscope

Technical Chart / Diagramme



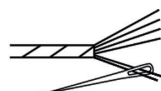
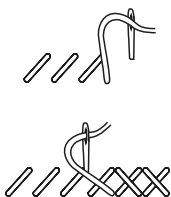
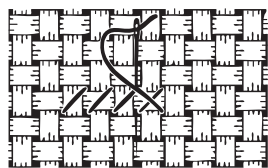
Note: Drawing not to scale / Dessin pas à l'échelle















Tool Kit / Fournitures

Needle / Aiguille (no.12)
DMC Mouliné Spécial ART 117
Fabric / Toile*

Cross Stitch / Point de Croix



Use 2 strands / Utiliser 2 brins*

Symbol Symbole	Colour Couleur	N° of skeins N° d'échevettes
 	939	x 4
 	3865	x 7
 	310	x 3
 	950	x 3
 	163	x 2
 	598	x 1

*Number of strands and skeins calculated for about 33x33 cm and 14 or 16 count aida
Nombre de brins et d'échevettes calculé pour 33x33 cm et une toile Aida 5.5 ou 6 pts/cm