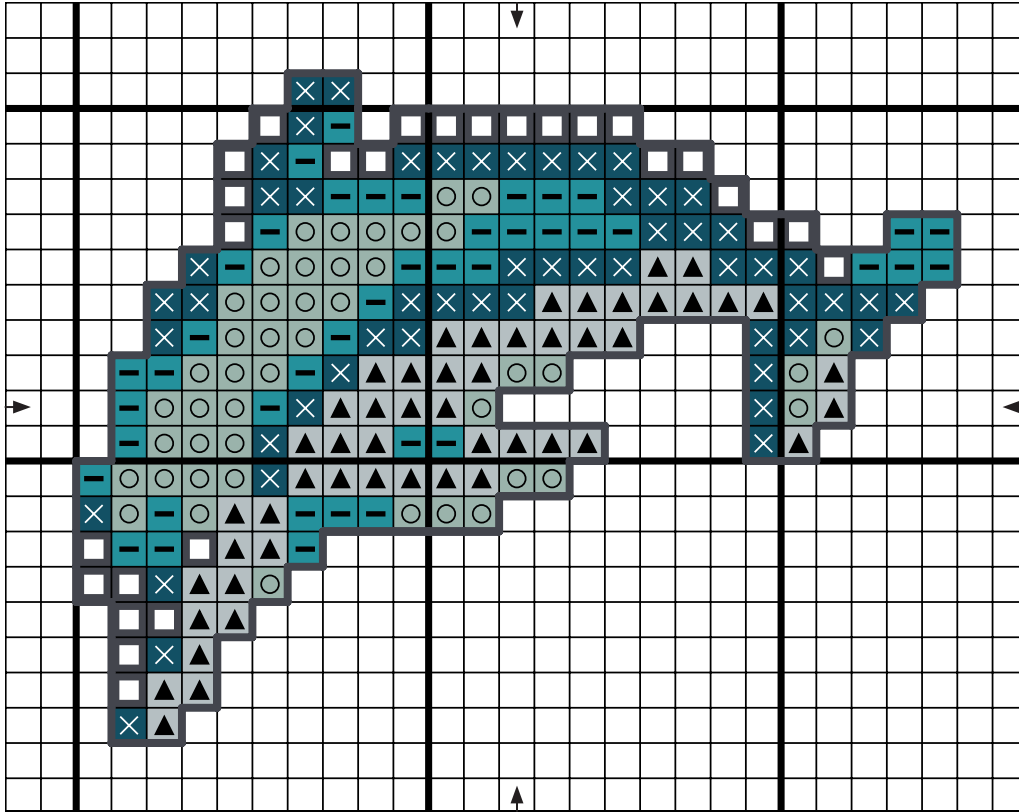
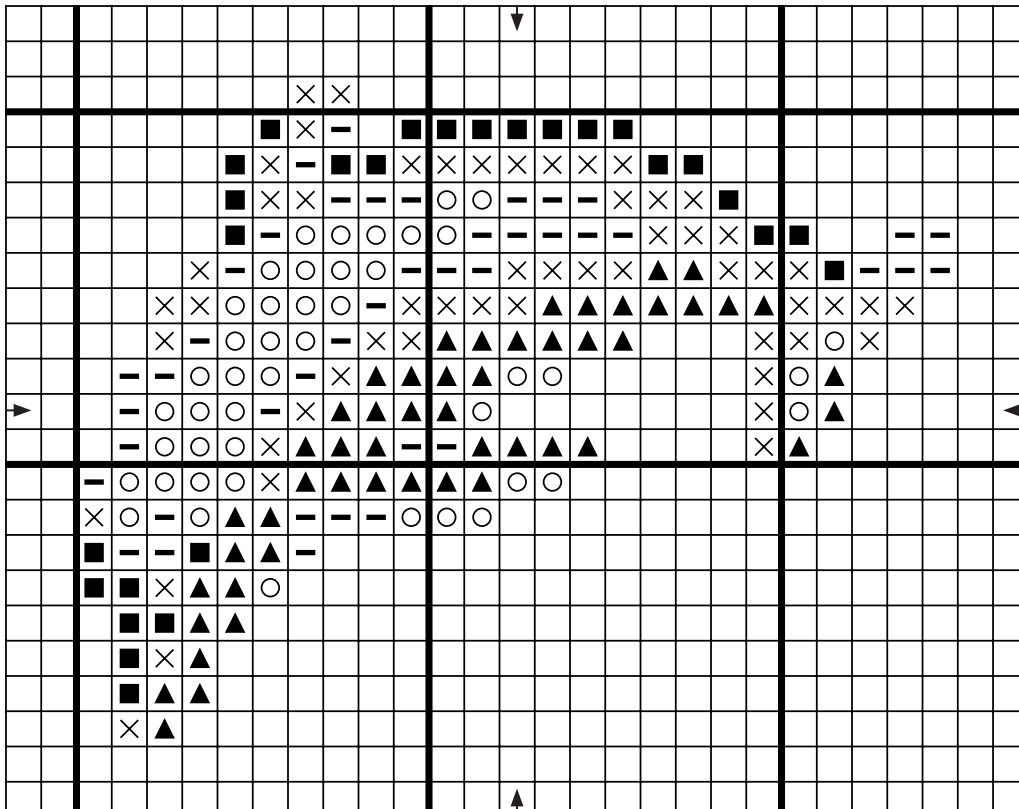


Note: Drawing not to scale / Dessin pas à l'échelle

Colour Guide with backstitch / Guide de couleurs avec le point arrière



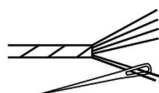
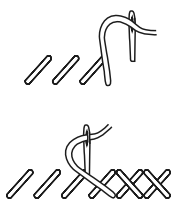
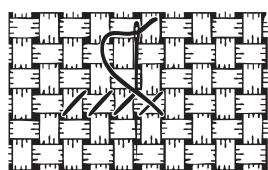
Technical chart without backstitch / Tableau de techniques sans le point arrière



Tool Kit / Fournitures

Needle / Aiguille (no.26)
 DMC Mouliné Spécial ART 117
^EDMC Light Effects ART 317W
 Fabric / Toile*

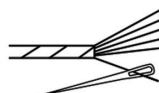
Cross Stitch / Point de Croix



Use 2 strands / Utiliser 2 brins*

Symbol Symbole	Colour Couleur	N° of skeins N° d'échevettes
▲▲ ▲▲	E415 ^E	x 1
○○ ○○	928	x 1
— —	597	x 1
×× ××	3750	x 1
■ ■	939	x 1

Backstitch / Point arrière



Use 1 strand / Utiliser 1 brin*

Symbol Symbole	Colour Couleur	N° of skeins N° d'échevettes
—	939	included above inclus ci dessus

* Number of strands / skeins based on 14 or 16 count aida - Nombre de brins / d'échevettes calculé pour toile Aida 5.5 ou 6 pts/cm
 Approx / Environ 5.5 x 3.5cm on 14 count / 5.5pts/cm