

AWESOME SWEATSHIRT UPGRADE

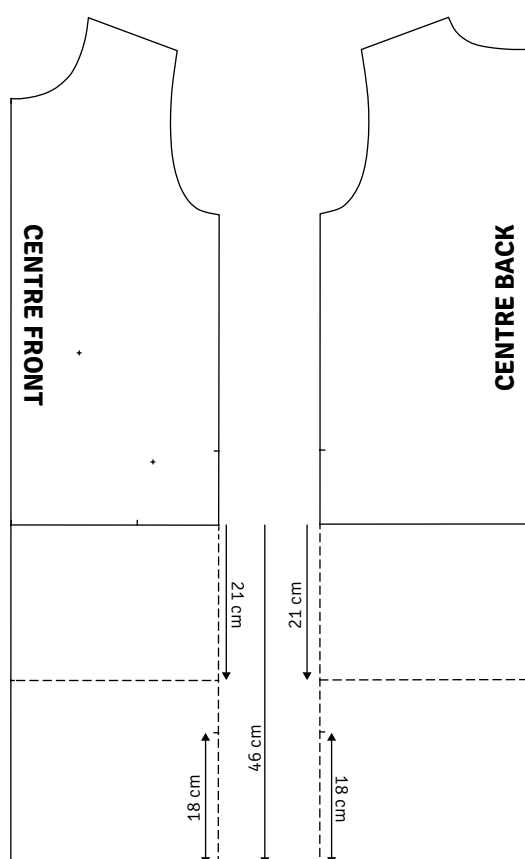
SWEATSHIRT DRESS



MATERIALS

- French terry, 145 cm wide:
size sizes XS-S 180 cm/size M-XL 225 cm
- Hood lining: 50 cm
- Rib for wrist edge: 15 cm
- Anorak cord: 115 cm
- Optional: 2 eyelets + remnant of interfacing

By the way... You can make the dress any length you wish



PATTERN
SUPPLEMENT
TO NO. 22073



Choose one pattern size larger than you normally would.

Then add 1 cm to the width on both sides of front, back and sleeve. for a dress, you need additional hip width.

For below-the-knee-length, extend pattern pieces 1 and 2 by 46 cm. For above-the-knee-length, extend parts 1 and 2 by 21 cm.

For the below-the-knee model, cut side slit notches in side seams 18 cm from lower edge.

Changes to sewing instructions:

Model A:

11. Press side seams and top and bottom edges 1 cm to the wrong side.

12. Place kangaroo pocket on front (see markings - pin into place if you wish). Edge-stitch pocket into place.

Overlock/zigzag the slit to 5 cm above the notch.

16. Sew sleeve and side seams. For below-the-knee model; stop sewing at notch for slit.

19-20. Omit.

Sew the dress 3 cm to the wrong side with a double row of stitching. You could choose to use a twin needle. Press.

To make the side slit: Press side seams flat. Sew side slit 1 cm to the wrong side.