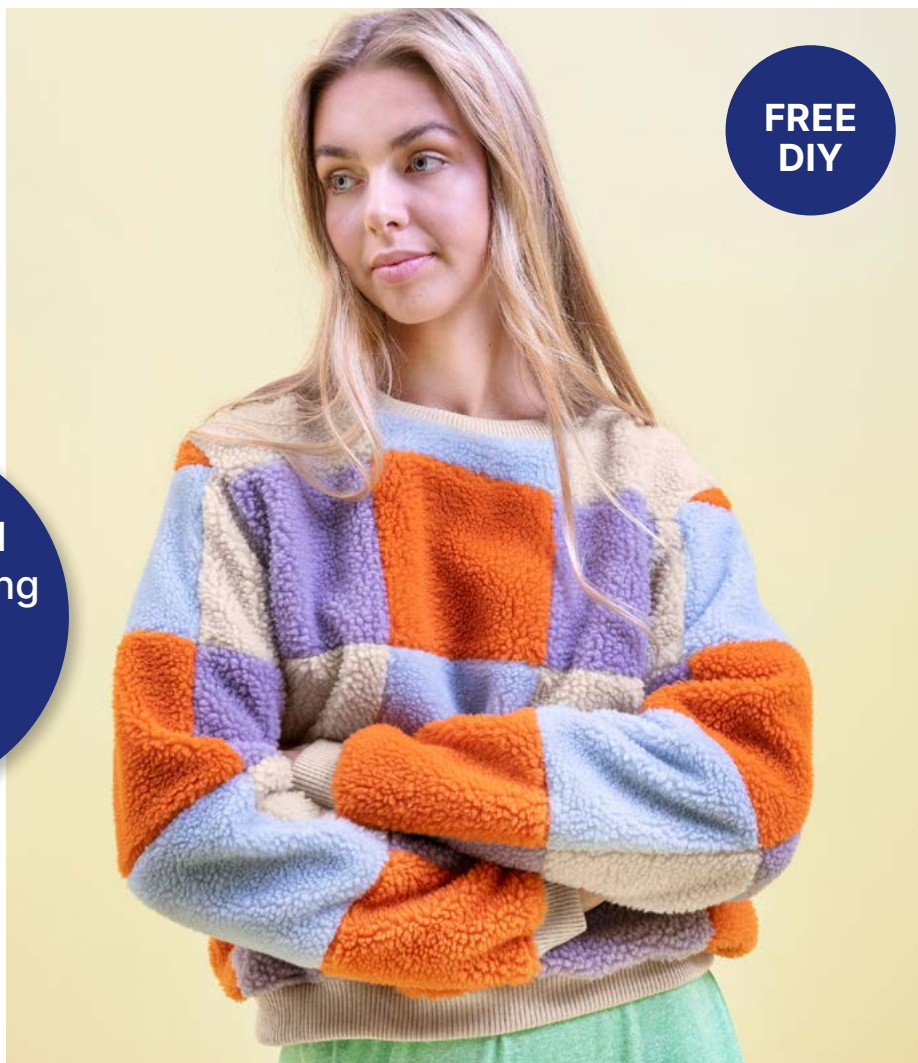
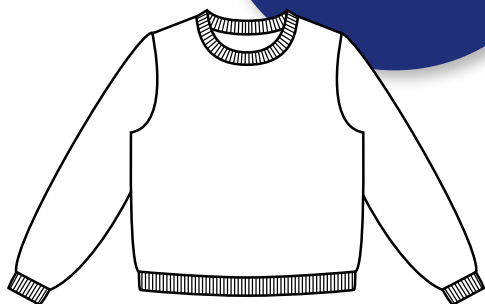


# Teddy Patchwork Sweatshirt

## Materials

- Colour 1 (no. 910302)  
XS-L = 40 cm - XL = 55 cm
- Colour 2 (no. 910285)  
XS-XL = 40 cm
- Colour 3 (no. 910281)  
XS-L = 40 cm - XL = 55 cm
- Colour 4 (no. 910273)  
XS-XL = 40 cm
- Rib (no. 96040) - 2 pcs
- Thread

Can be used  
on the following  
pattern  
no. 22073C



**Colour 1:** For sizes XS-L: cut out 18 squares 17 × 17 cm big  
For size XL: cut out 22 squares 17 × 17 cm big

**Colour 2:** Cut out 16 squares 17 × 17 cm big

**Colour 3:** For sizes XS-L: cut out 16 squares 17 × 17 cm big  
For size XL: Cut out 20 squares 17 × 17 cm big

**Colour 4:** Cut out 16 squares 17 × 17 cm big

Overlock/ zig-zag all squares.  
Sew them together with 1 cm  
seam allowance according to  
the illustration.

